

LEGEND

- Gahcho Kué Mine
- Existing Mine
- Territorial Capital
- Populated Place
- Highway
- Access Road
- Existing Winter Road
- Gahcho Kué Winter Access Road
- Tibbitt to Contwoyto Winter Road
- Watercourse
- Waterbody
- Territorial/Provincial Boundary

NOTES

Source: Base Data Obtained From Geogratis, © Department of Natural Resources Canada. All Rights Reserved.

GAHCHO KUÉ MINE

Location of the Gahcho Kué Mine

PROJECTION: Canadian Lambert Conf. Conic DATUM: NAD83

Scale: 1:3,500,000
 30 15 0 30

 Kilometres

DE BEERS
 GROUP OF COMPANIES

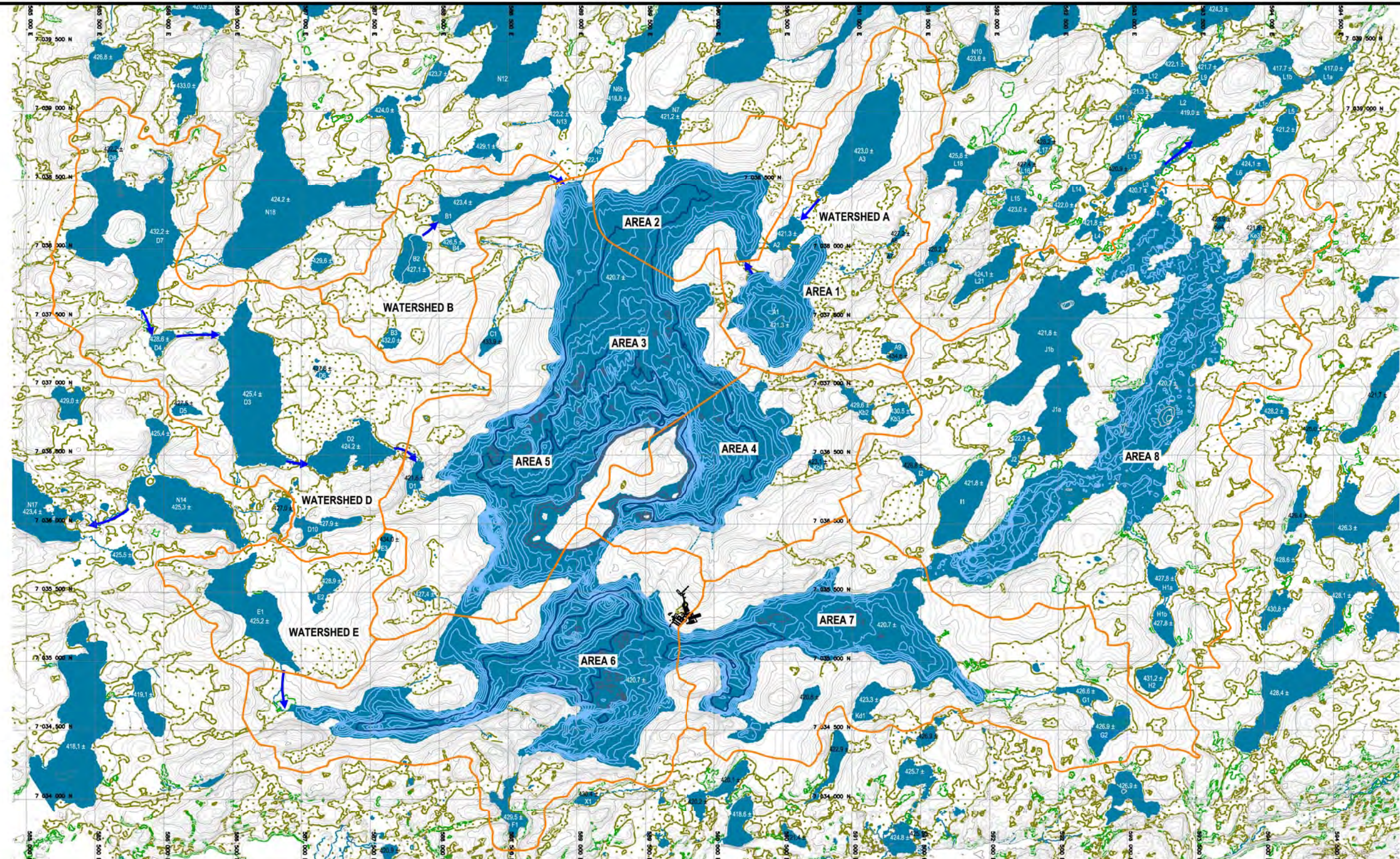
FILE No: DBWL_001_Overview_REV0 DATE: April 19, 2016

JOB NO: 1540290 REVISION NO: 0

OFFICE: GOLD-CAL DRAWN: CW CHECK: CB

Figure 1-1

I:\CLIENTS\DE BEERS\1540290\Mapping\XID\DeBeers\WaterLicenseReport\DBWL_001_Overview_REV0.mxd



- LEGEND:**
- 435 EXISTING GROUND CONTOURS
5 m INDEX - 1 m INTERMEDIATE
 - BATHYMETRY CONTOURS
5 m INDEX - 1 m INTERMEDIATE
 - MARSH AREA
 - SCRUB
 - CATCHMENT BOUNDARY
 - DRAINAGE FLOW DIRECTION

NOTES
 • ZONE 12, UTM NAD83 PROJECTION CENTRED ON 111°

STATUS
 ISSUED FOR REVIEW

GAHCHO KUÉ PROJECT

**WATER MANAGEMENT PLAN PRE-DISTURBANCE
 (PRIOR TO MINE DEVELOPMENT)**

| | |
|----------------------------|-----------------|
| PROJECTION: UTM Zone 12 | DATUM: NAD83 |
| SCALE 1:30,000 METRES | |

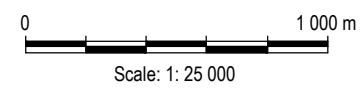


| | |
|------------------------------|--------------------|
| FILE No: 2013-ENG-002-CAD | DATE: June 2014 |
| JOB No: E14103040 | REVISION No: 0 |
| OFFICE: EBA-EDM | DRAWN: HX |
| | CHECK: BH |

Figure 2

O:\Education\Engineering\E14103040 Gahcho Kué\CAD\Update\Water and Waste MPP\Figure 4.1.dwg Jun 27, 2014, 2:13pm

C:\Edmonton\Engineering\141\Projects_GAHCHO_KUJE\14103040-11_005 Permitting Assistance\Civil_3D\Cause PK Stability_Figure 2.dwg [FIGURE 2] April 18, 2016 - 5:03:20 pm (BY: XIA, HONGWEI)



NOTES

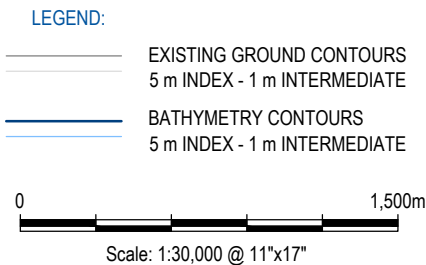
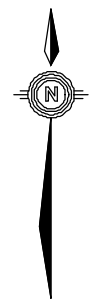
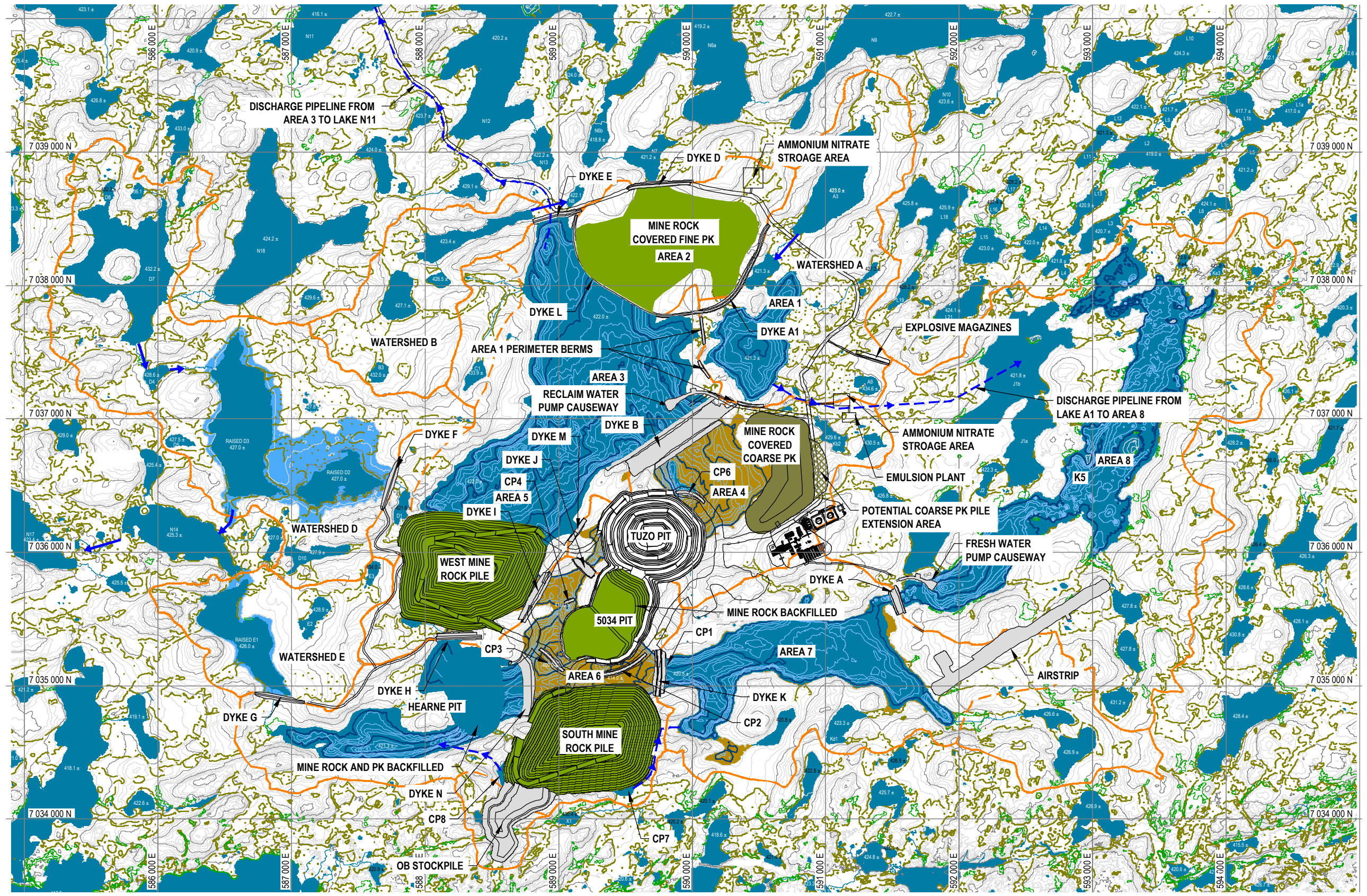
- DIMENSIONS ARE IN METERS UNLESS SPECIFIED OTHERWISE.
- ZONE = '23 UTM NAD83 PROJECT COORDINATE ZONE 11'

STATUS
ISSUED FOR USE



| GAHCHO KUÉ PROJECT NWT, CANADA | | | | | |
|-----------------------------------|---------------------|------------|----------|----------|--|
| GENERAL SITE PLAN VIEW | | | | | |
| PROJECT NO. E14103040-11-001 | DWN HX | CKD WTH | REV A | Figure 2 | |
| OFFICE EDM | DATE August 2015 | | | | |

Q:\Edmonton\Engineering\E141\Projects_GAHCHO_KUE\E14103040-11-028_OVM\PI\Reporting\Figures - PK and Rock MP- Version 4\Figure 2 General Site Layout Plan.dwg [FIGURE 2] March 31, 2016 - 1:16:22 pm (BY: XIA, HONGWEI)



NOTES:

- UTM WITH NAD83 DATUM, ZONE 12, METRE; CENTRAL MERIDIAN 111D W.



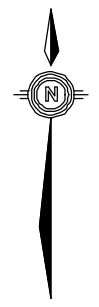
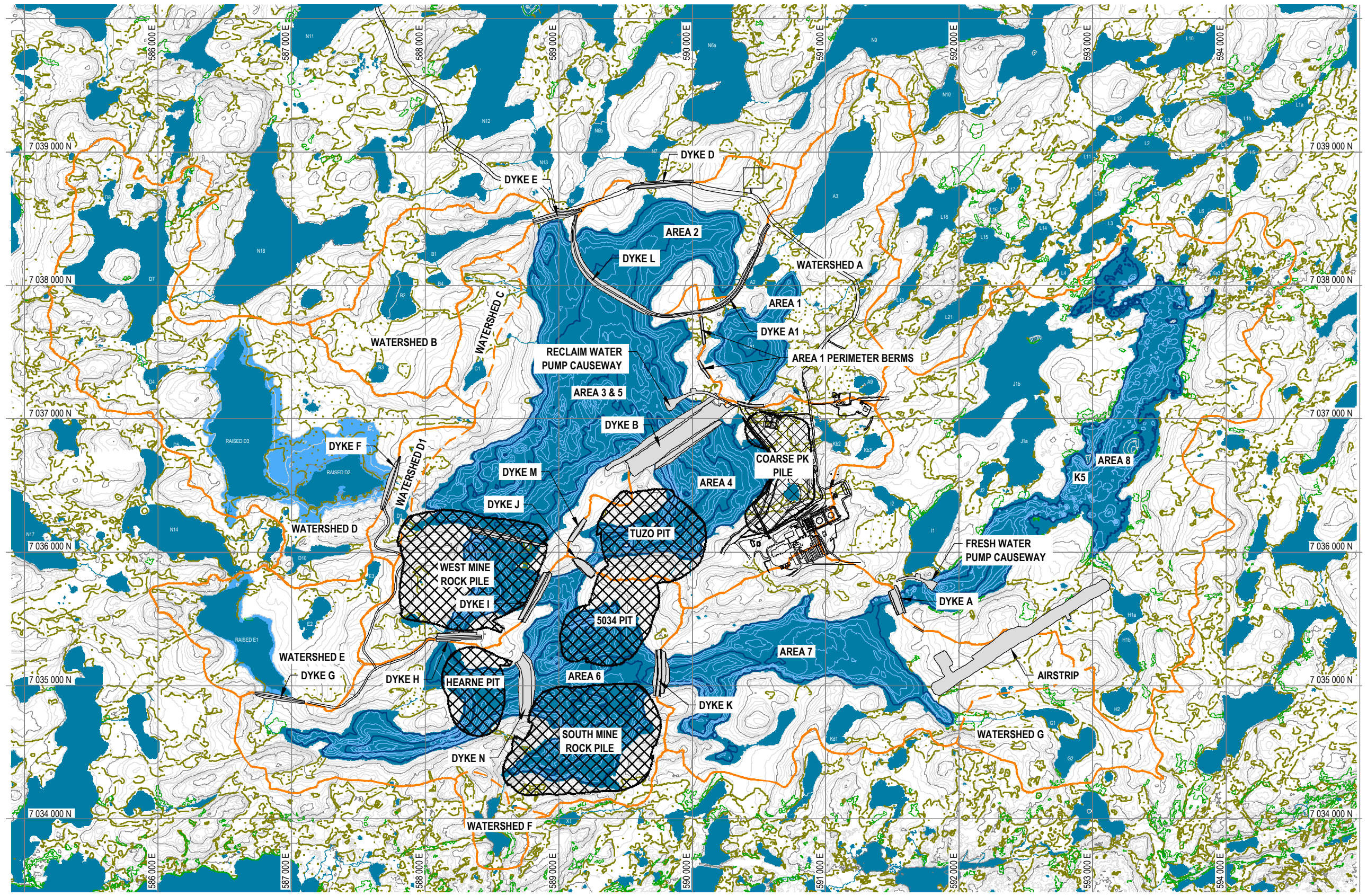
**GAHCHO KU É DIAMOND PROJECT
NWT, CANADA**

**GENERAL SITE LAYOUT PLAN
DURING MINE OPERATION**

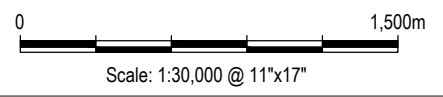
| | | | | |
|----------------------------------|-----------------------|-----------|----------|-----------------|
| PROJECT NO. E14103040-011-026 | DWN EL | CKD HX | REV 0 | FIGURE 2 |
| OFFICE EDMONTON | DATE MARCH 4, 2016 | | | |

ISSUED FOR REVIEW

Q:\Edmonton\Engineering\E141\Projects_GAHCHO_KUE\E14103040-11-028_OVM\PI\Reporting\Figures - OVM\Water MP - Site Plan.dwg [FIGURE 2] April 21, 2016 - 2:57:25 pm (BY: XIA, HONGWEI)



- LEGEND:**
- EXISTING GROUND CONTOURS
5 m INDEX - 1 m INTERMEDIATE
 - BATHYMETRY CONTOURS
5 m INDEX - 1 m INTERMEDIATE
 - CATCHMENT BOUNDARY
 - MARSH AREA
 - SCRUB
 - LAKE / POND



NOTES:

- UTM WITH NAD83 DATUM, ZONE 12, METRE; CENTRAL MERIDIAN 111D W.



**GAHCHO KU É DIAMOND PROJECT
NWT, CANADA**

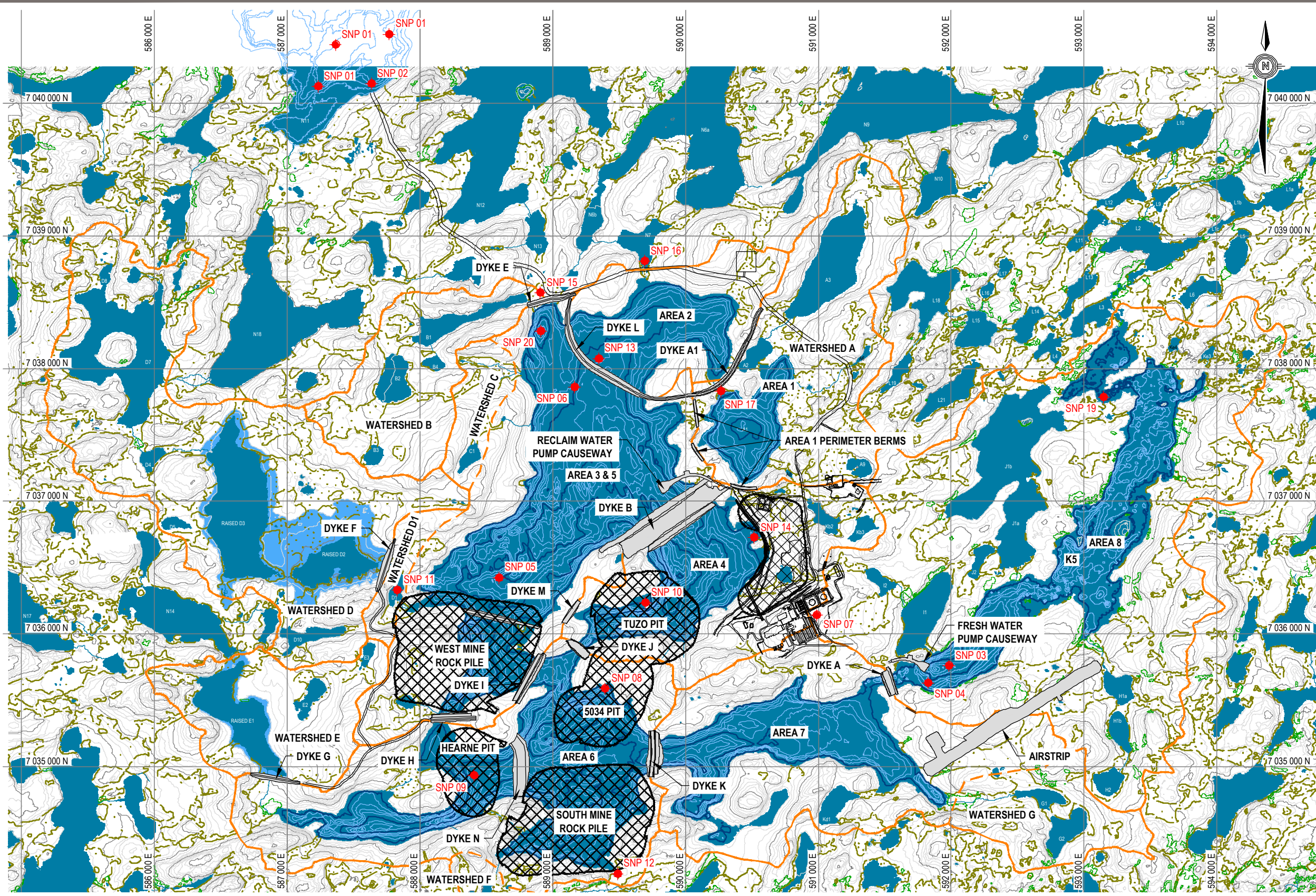
**WATER MANAGEMENT AREAS
AND WATERSHEDS**

| | | | |
|----------------------------------|-----------------------|-----------|----------|
| PROJECT NO. E14103040-011-026 | DWN EL | CKD HX | REV 0 |
| OFFICE EDMONTON | DATE MARCH 4, 2016 | | |

FIGURE 2

ISSUED FOR REVIEW

Q:\Edmonton\Engineering\E141\Projects_GAHCHO_KUE\E14103040-11-028_OVM\MP\Reporting\Figures - OPM\Water MP - SNP Monitoring Stations Plan.dwg [FIGURE 17] April 21, 2016 - 2:53:58 pm (BY: XIA, HONGWEI)



| SNP STATION # | DESCRIPTION |
|---------------|--|
| 1 | EDGE OF MIXING ZONE IN LAKE N11 |
| 2 | IN-LINE MONITORING FOR END-OF-PIPE DISCHARGE FROM KENNADY LAKE TO LAKE N11 |
| 3 | EDGE OF MIXING ZONE IN AREA 8 |
| 4 | IN-LINE MONITORING FOR END-OF-PIPE DISCHARGE FROM KENNADY LAKE TO AREA 8 |
| 5 | WATER MANAGEMENT POND-NORTH OF WEST MINE ROCK PILE |
| 6 | WATER MANAGEMENT POND-SOUTHWEST OF DYKE L |
| 7 | EFFLUENT FROM SEWAGE TREATMENT PLANT |
| 8 | WASTEWATER COLLECTION SUMP - IN-LINE FROM 5034 OPEN PIT |
| 9 | WASTEWATER COLLECTION SUMP - IN-LINE FROM HEARNE OPEN PIT |
| 10 | WASTEWATER COLLECTION SUMP - IN-LINE FROM TUZO OPEN PIT |
| 11 | SEEPAGE SURVEY - WEST MINE ROCK PILE |
| 12 | SEEPAGE SURVEY - SOUTH MINE ROCK PILE |
| 13 | SEEPAGE SURVEY - FINE PKC FACILITY |
| 14 | SEEPAGE SURVEY - COARSE PKC FACILITY |
| 15 | DYKE SEEPAGE - NORTH OF DYKE E |
| 16 | DYKE SEEPAGE - NORTH OF DYKE D |
| 17 | DYKE SEEPAGE - EAST OF DYKE A1 |
| 18 | OUTLET OF LAKE N11 |
| 19 | OUTLET OF AREA 8 |
| 20 | INTAKE POINT IN WATER MANAGEMENT POND FOR DISCHARGE TO LAKE N11 AND AREA 8 |

LEGEND:

- EXISTING GROUND CONTOURS
5 m INDEX - 1 m INTERMEDIATE
- BATHYMETRY CONTOURS
5 m INDEX - 1 m INTERMEDIATE
- MARSH AREA
- SCRUB
- CATCHMENT BOUNDARY
- SNP MONITORING STATION
- LAKE / POND

Scale: 1:30,000 @ 11"x17"

NOTES:

- UTM WITH NAD83 DATUM, ZONE 12, METRE; CENTRAL MERIDIAN 111D W.
- SNP 18 LOCATED AT OUTLET OF LAKE N11 (NOT SHOWN).

CLIENT

**GAHCHO KU É DIAMOND PROJECT
NWT, CANADA**

LOCATIONS OF SNP MONITORING STATIONS

| | | | |
|----------------------------------|-----------------------|-----------|----------|
| PROJECT NO. E14103040-011-026 | DWN EL | CKD HX | REV 0 |
| OFFICE EDMONTON | DATE MARCH 4, 2016 | | |

FIGURE 17

ISSUED FOR REVIEW