

Appendix 1 Site Photographs



WorleyParsons

resources & energy

APACHE CANADA LTD.

2013 MONITORING OF THE FORMER POINTED MOUNTAIN GAS FIELD

NORTHWEST TERRITORIES (LATITUDES 60° 10' N TO 60° 27' N, LONGITUDES 123° 35' W TO 124° 00' W)



Photo 1 View northeast across the Plant Site and access road



Photo 2 View southwest/down at the Plant Site entrance clearing, adjacent to the main Plant Site



WorleyParsons

resources & energy

APACHE CANADA LTD.

2013 MONITORING OF THE FORMER POINTED MOUNTAIN GAS FIELD

NORTHWEST TERRITORIES (LATITUDES 60° 10' N TO 60° 27' N, LONGITUDES 123° 35' W TO 124° 00' W)



Photo 3 View over the wetland south of the Plant Site



Photo 4 View west displaying the Airstrip landing and Fisherman Lake



WorleyParsons

resources & energy

APACHE CANADA LTD.

2013 MONITORING OF THE FORMER POINTED MOUNTAIN GAS FIELD

NORTHWEST TERRITORIES (LATITUDES 60° 10' N TO 60° 27' N, LONGITUDES 123° 35' W TO 124° 00' W)



Photo 5 View northwest across the Airstrip landing and Fisherman Lake



Photo 6 View east over Well Site A-1



WorleyParsons

resources & energy

APACHE CANADA LTD.

2013 MONITORING OF THE FORMER POINTED MOUNTAIN GAS FIELD

NORTHWEST TERRITORIES (LATITUDES 60° 10' N TO 60° 27' N, LONGITUDES 123° 35' W TO 124° 00' W)



Photo 7 View southeast at Well Site A-1 showing Northwestel facilities present at the time of the site visit (removed in 2014).



Photo 8 View north at Well Site A-2



WorleyParsons

resources & energy

APACHE CANADA LTD.

2013 MONITORING OF THE FORMER POINTED MOUNTAIN GAS FIELD

NORTHWEST TERRITORIES (LATITUDES 60° 10' N TO 60° 27' N, LONGITUDES 123° 35' W TO 124° 00' W)



Photo 9 View south at Well Site A-2 and adjacent creek and beaver dam complex



Photo 10 View northwest over Well Site A-3



WorleyParsons

resources & energy

APACHE CANADA LTD.

2013 MONITORING OF THE FORMER POINTED MOUNTAIN GAS FIELD

NORTHWEST TERRITORIES (LATITUDES 60° 10' N TO 60° 27' N, LONGITUDES 123° 35' W TO 124° 00' W)



Photo 11 View north across Well Site A-3



Photo 12 View southwest over Well Site A-4



WorleyParsons

resources & energy

APACHE CANADA LTD.

2013 MONITORING OF THE FORMER POINTED MOUNTAIN GAS FIELD

NORTHWEST TERRITORIES (LATITUDES 60° 10' N TO 60° 27' N, LONGITUDES 123° 35' W TO 124° 00' W)



Photo 13 View west over Well Site A-4

Appendix 2 Borehole Logs



WorleyParsons

resources & energy

Borehole # GH1

PROJECT # 307074-01860-100

Project Name: 2013 Monitoring Program

Client: Apache Canada Ltd.

Drilled by: Hand Auger

Drilling Method: Hand Auger

Drill Date: 15 Aug 2013

Logged by: MAZL

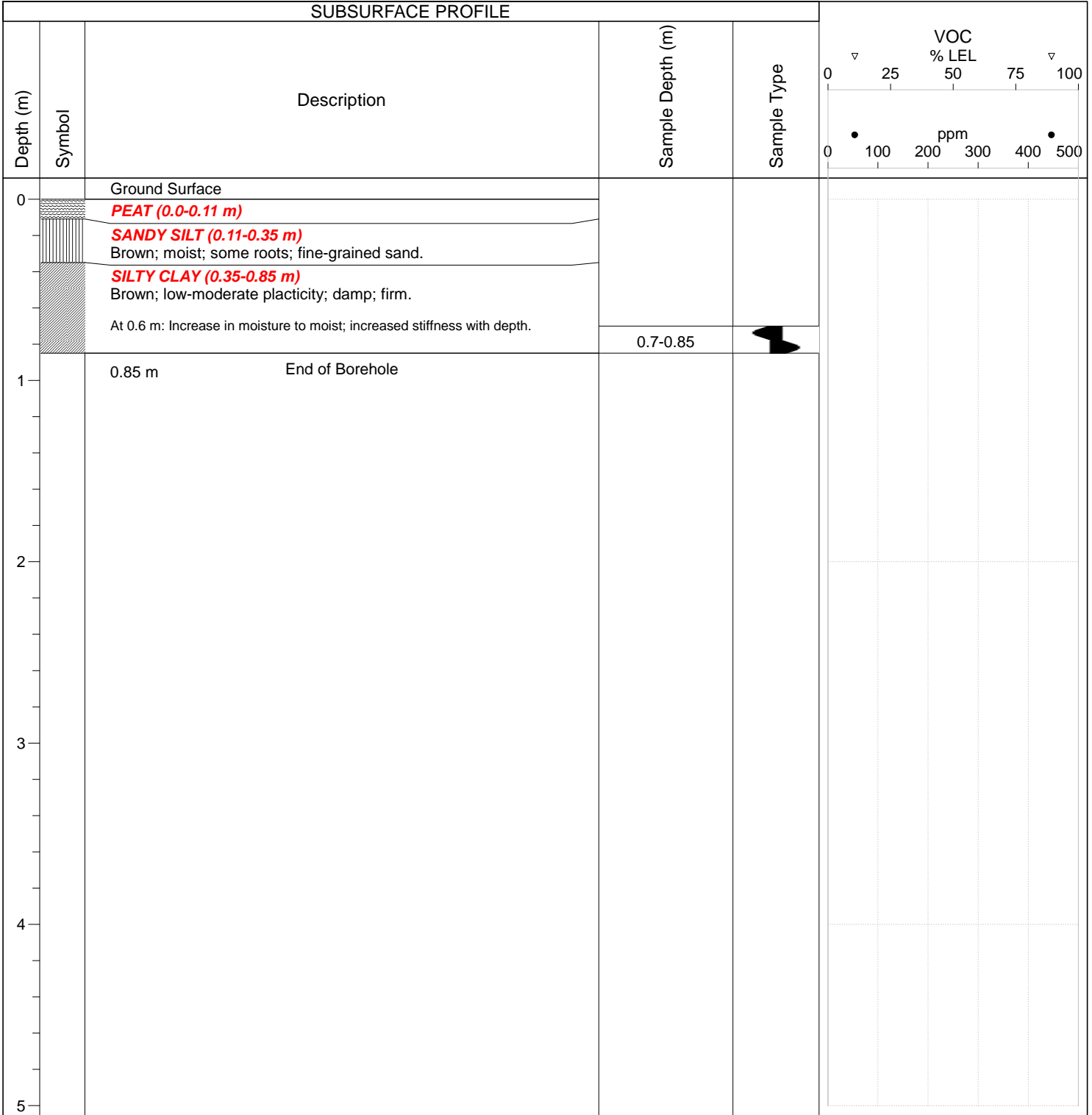
Location: Pointed Mountain Plant Site

Northing: 6695846

Easting: 454749

Elevation: 0

SUBSURFACE PROFILE





WorleyParsons
resources & energy

Borehole # GH2

PROJECT # 307074-01860-100

Project Name: 2013 Monitoring Program

Client: Apache Canada Ltd.

Drilled by: Hand Auger

Drilling Method: Hand Auger

Drill Date: 15 Aug 2013

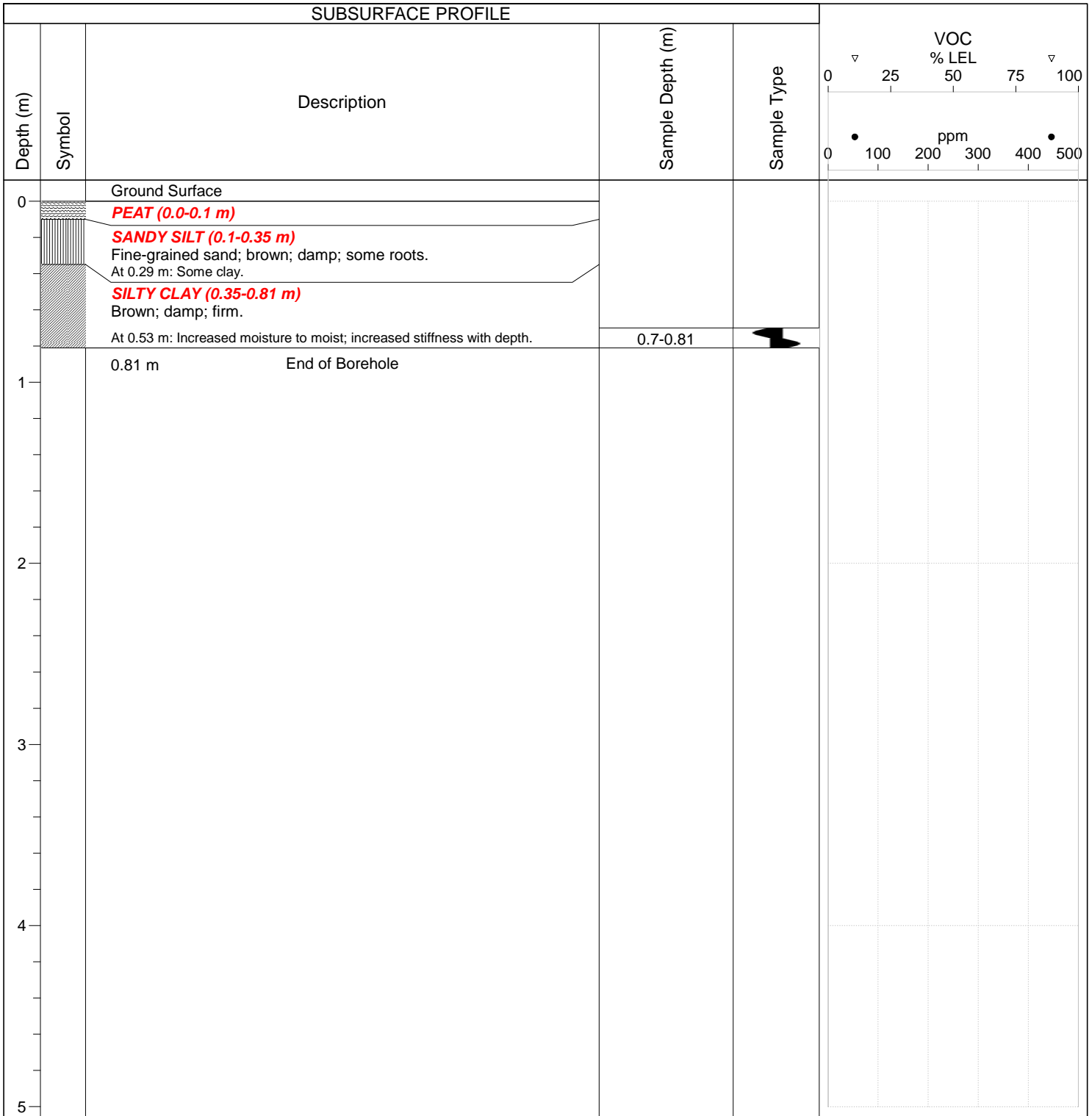
Logged by: MAZL

Location: Pointed Mountain Plant Site

Northing: 6695818

Easting: 454800

Elevation: 0





WorleyParsons

resources & energy

Borehole # GH3

PROJECT # 307074-01860-100

Project Name: 2013 Monitoring Program

Client: Apache Canada Ltd.

Drilled by: Hand Auger

Drilling Method: Hand Auger

Drill Date: 15 Aug 2013

Logged by: MAZL

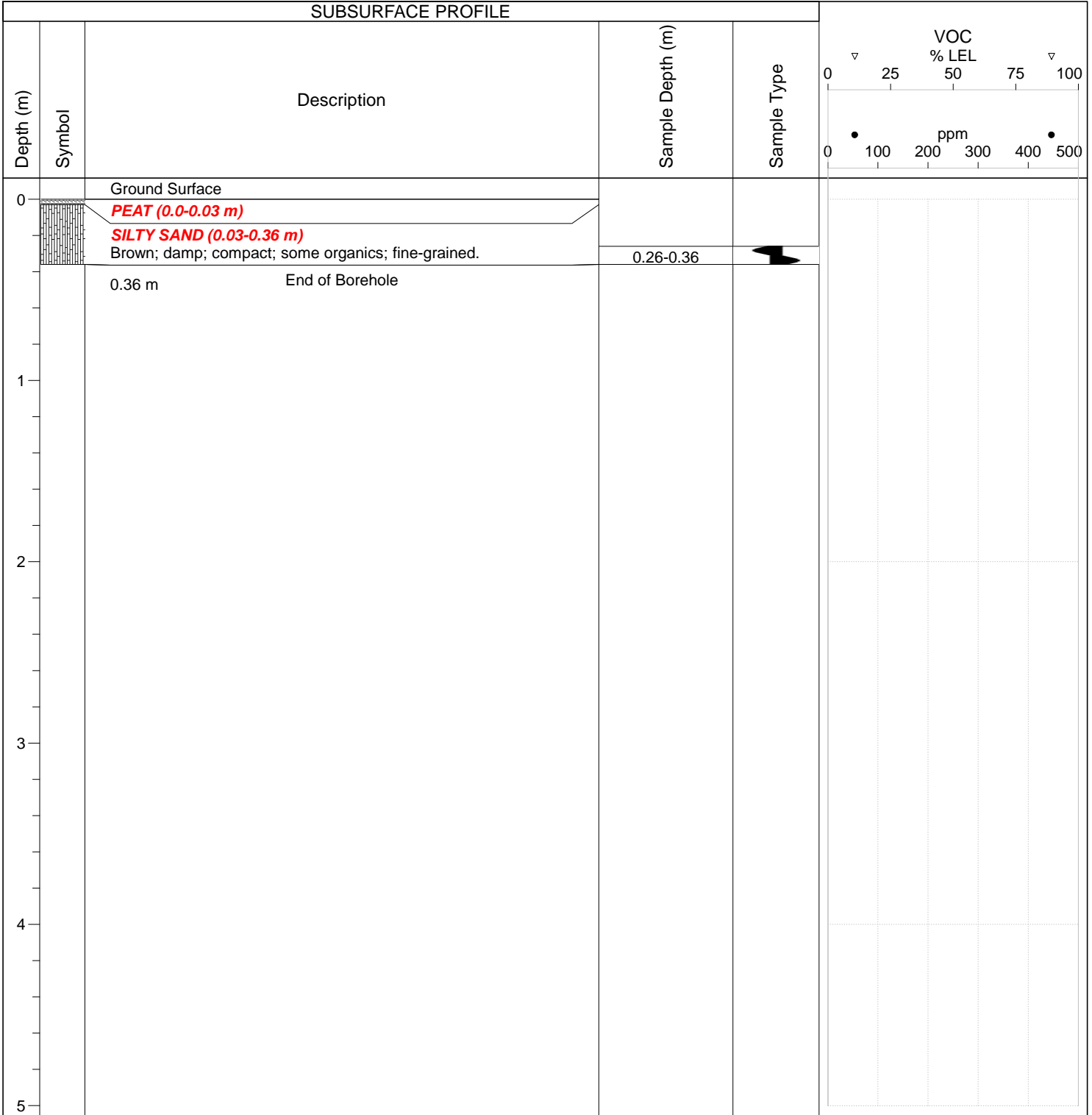
Location: Pointed Mountain Plant Site

Northing: 6695782

Easting: 454804

Elevation: 0

SUBSURFACE PROFILE





WorleyParsons
resources & energy

Borehole # GH4

PROJECT # 307074-01860-100

Project Name: 2013 Monitoring Program

Client: Apache Canada Ltd.

Drilled by: Hand Auger

Drilling Method: Hand Auger

Drill Date: 15 Aug 2013

Logged by: MAZL

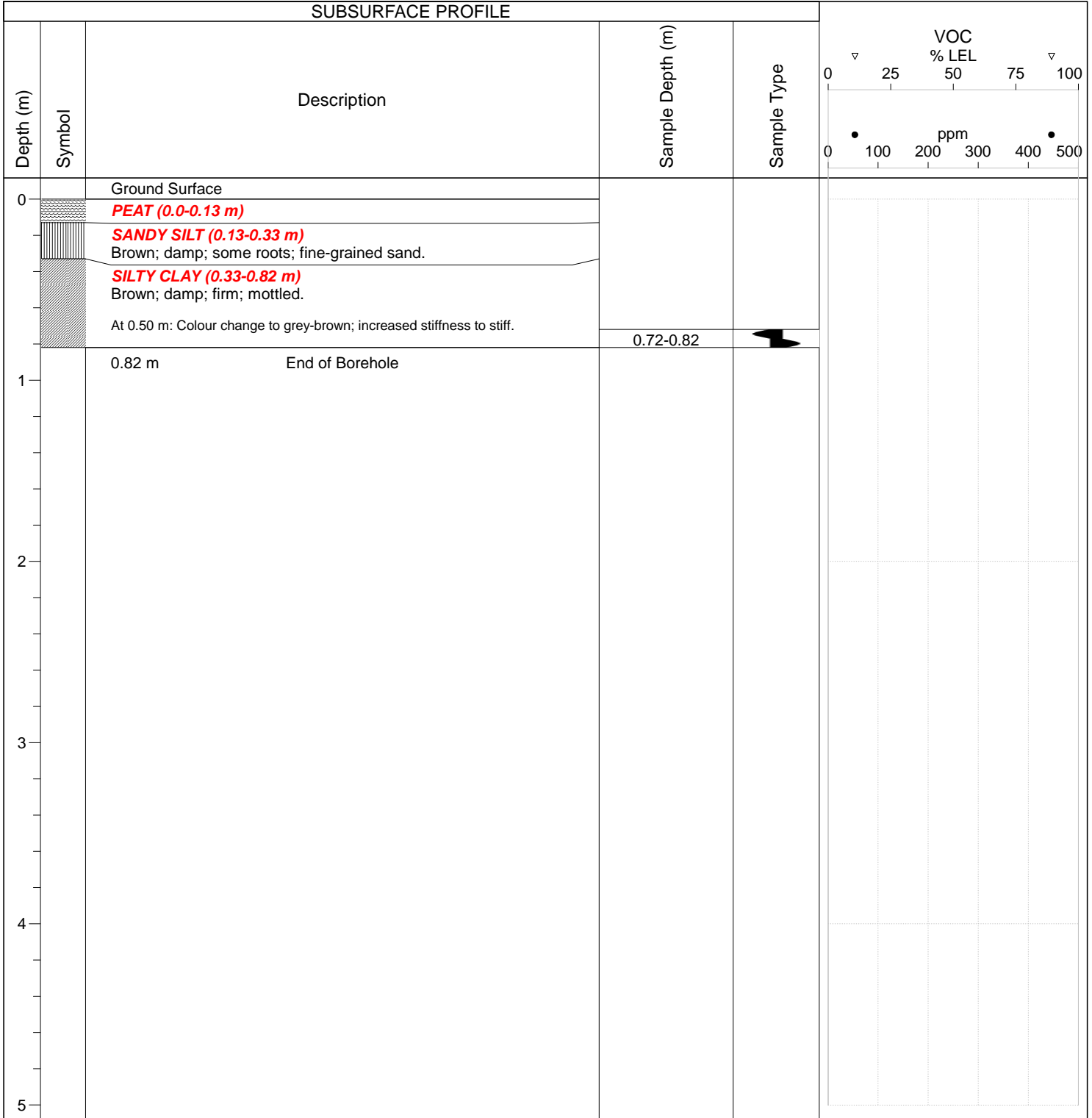
Location: Pointed Mountain Plant Site

Northing: 6695576

Easting: 454805

Elevation: 0

SUBSURFACE PROFILE





WorleyParsons
resources & energy

Borehole # GH5

PROJECT # 307074-01860-100

Project Name: 2013 Monitoring Program

Client: Apache Canada Ltd.

Drilled by: Hand Auger

Drilling Method: Hand Auger

Drill Date: 15 Aug 2013

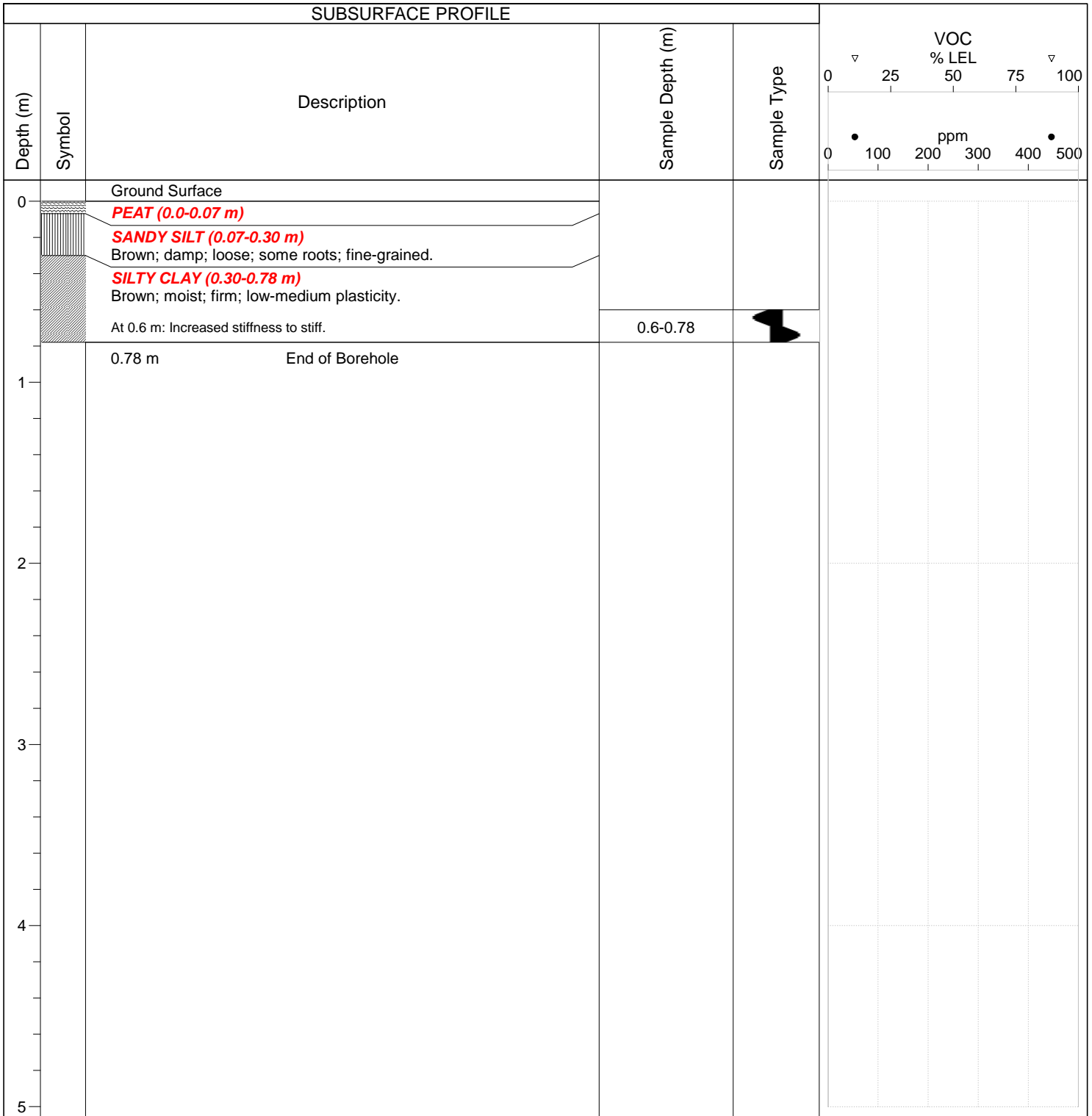
Logged by: MAZL

Location: Pointed Mountain Plant Site

Northing: 6695727

Easting: 454805

Elevation: 0





WorleyParsons

resources & energy

Borehole # GH6

PROJECT # 307074-01860-100

Project Name: 2013 Monitoring Program

Client: Apache Canada Ltd.

Drilled by: Hand Auger

Drilling Method: Hand Auger

Drill Date: 12 Aug 2013

Logged by: MAZL

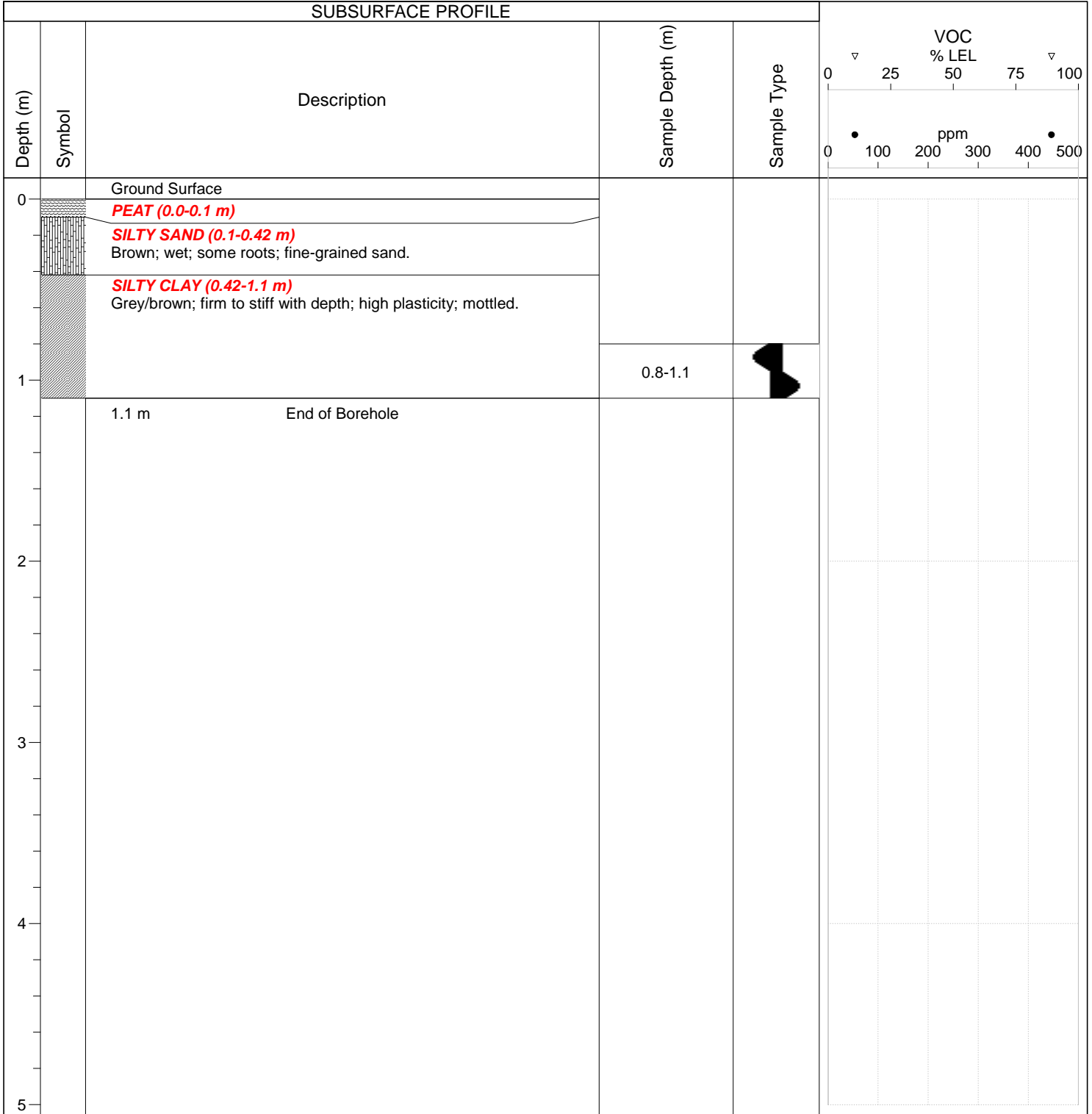
Location: Pointed Mountain Plant Site

Northing: 6695605

Easting: 454808

Elevation: 0

SUBSURFACE PROFILE





WorleyParsons

resources & energy

Borehole # GH7

PROJECT # 307074-01860-100

Project Name: 2013 Monitoring Program

Client: Apache Canada Ltd.

Drilled by: Hand Auger

Drilling Method: Hand Auger

Drill Date: 12 Aug 2013

Logged by: MAZL

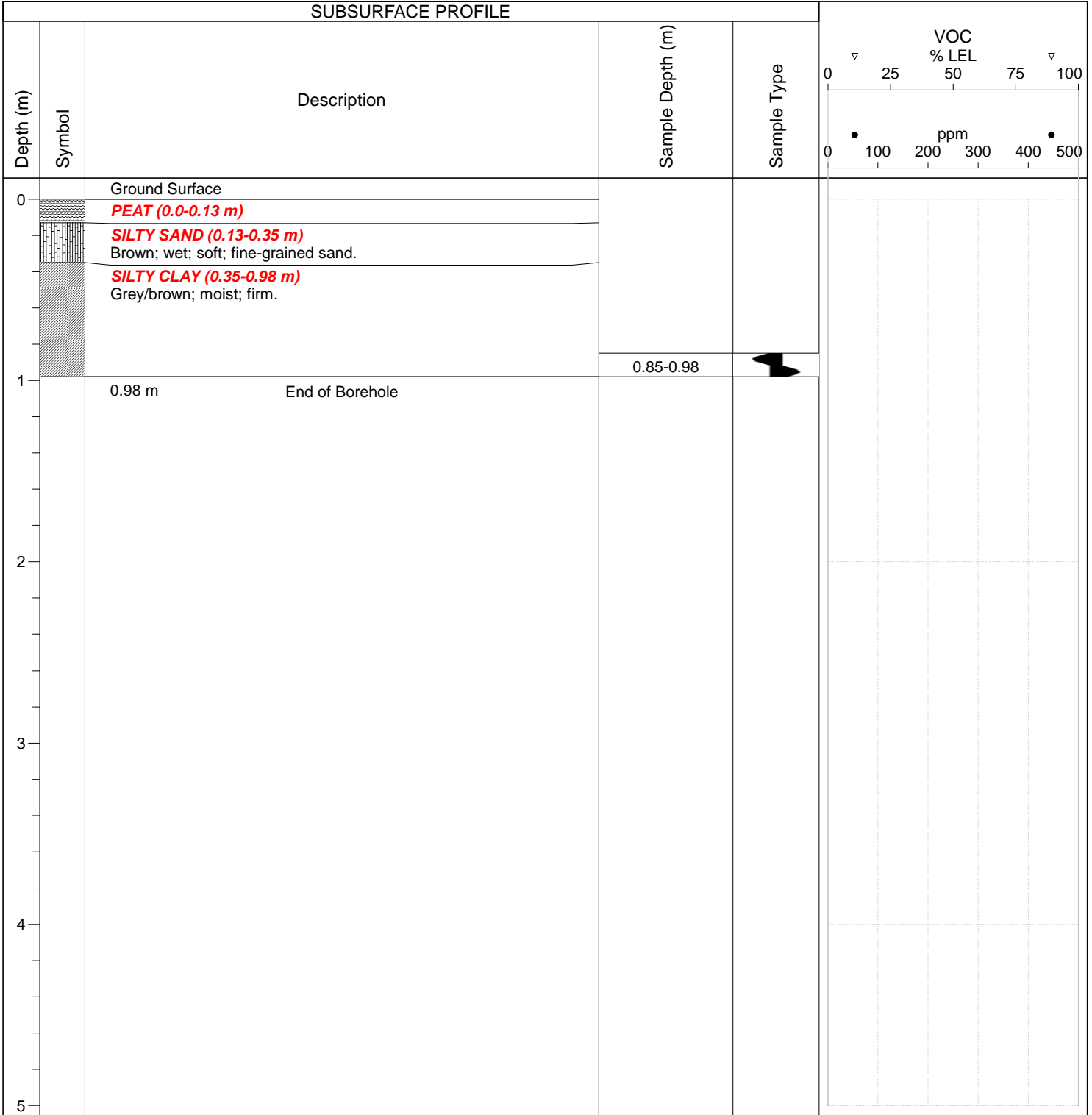
Location: Pointed Mountain Plant Site

Northing: 6695605

Easting: 454723

Elevation: 0

SUBSURFACE PROFILE





WorleyParsons

resources & energy

Borehole # GH8

PROJECT # 307074-01860-100

Project Name: 2013 Monitoring Program

Client: Apache Canada Ltd.

Drilled by: Hand Auger

Drilling Method: Hand Auger

Drill Date: 15 Aug 2013

Logged by: MAZL

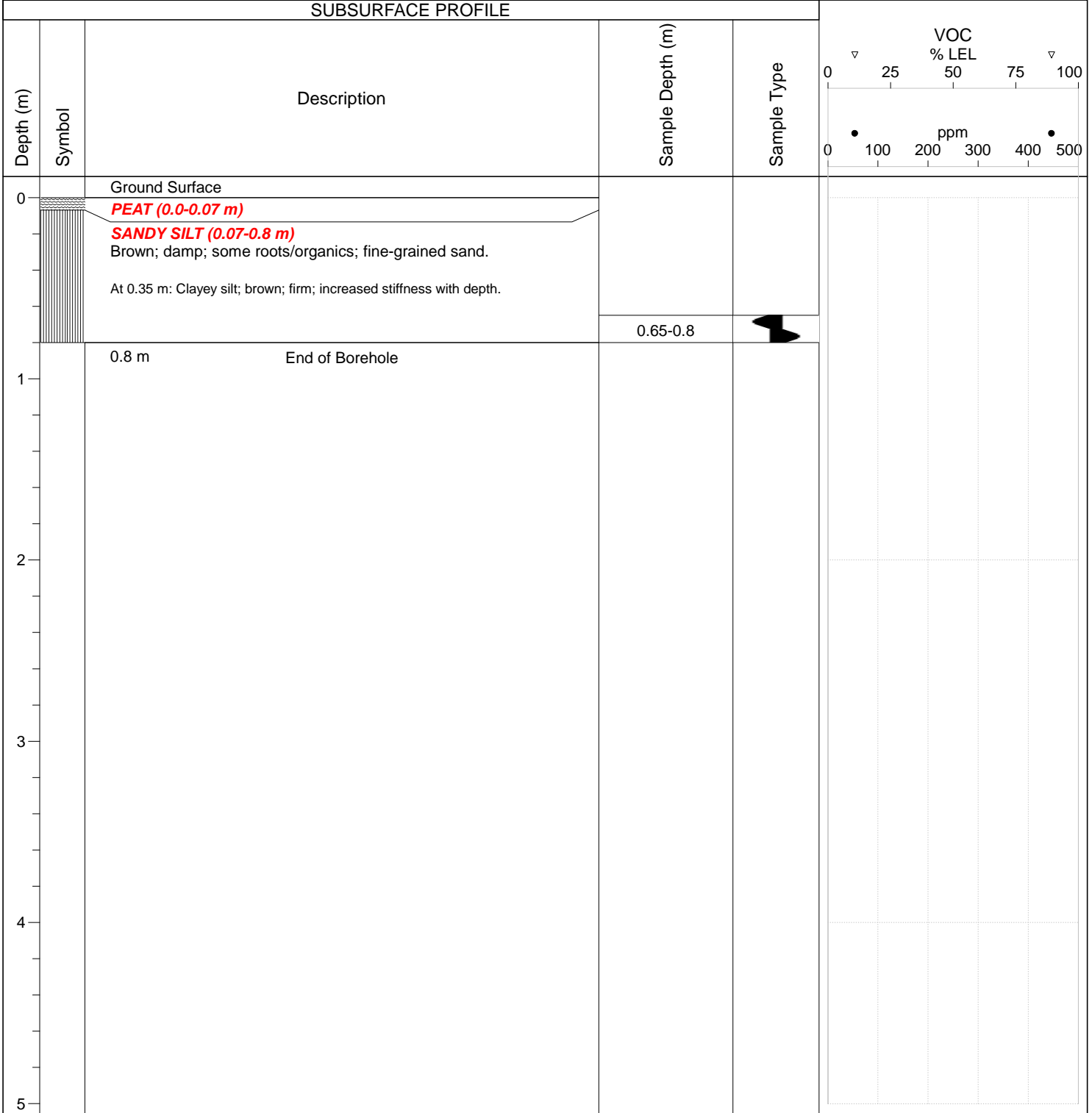
Location: Pointed Mountain Plant Site

Northing: 6695721

Easting: 454747

Elevation: 0

SUBSURFACE PROFILE





WorleyParsons

resources & energy

Borehole # GH9

PROJECT # 307074-01860-100

Project Name: 2013 Monitoring Program

Client: Apache Canada Ltd.

Drilled by: Hand Auger

Drilling Method: Hand Auger

Drill Date: 15 Aug 2013

Logged by: MAZL

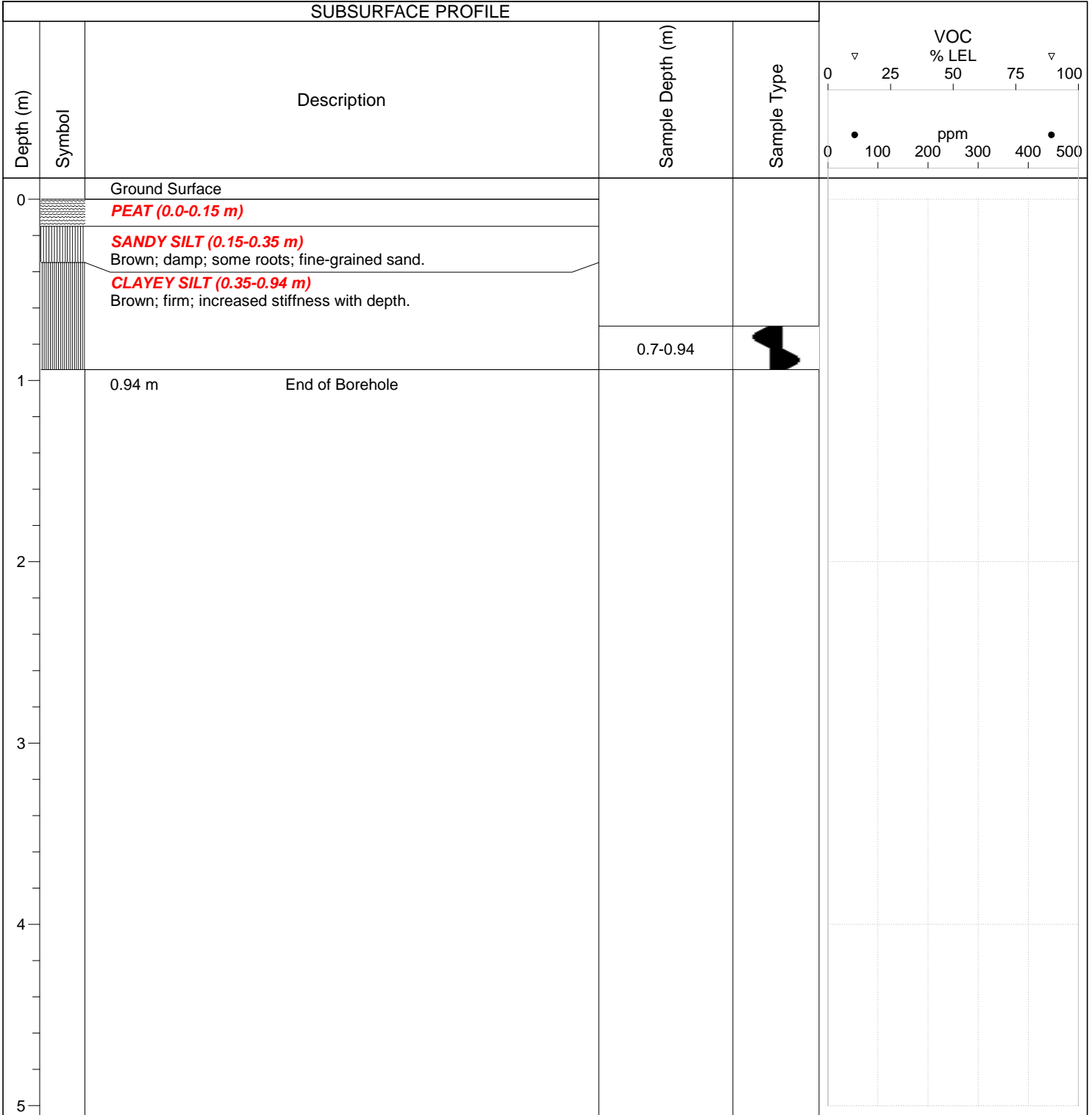
Location: Pointed Mountain Plant Site

Northing: 6695754

Easting: 454757

Elevation: 0

SUBSURFACE PROFILE



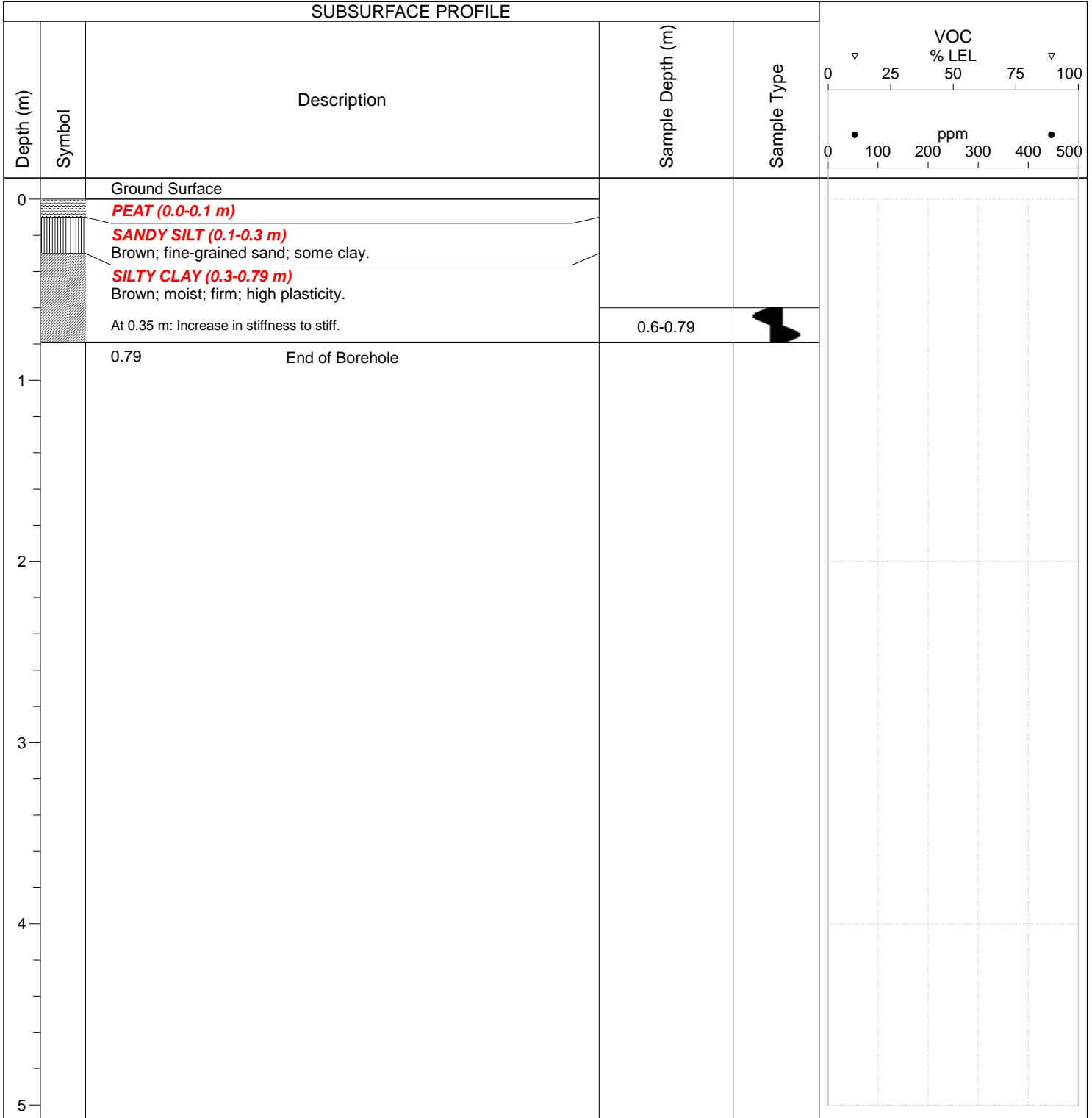


WorleyParsons
resources & energy

Borehole # GH10
PROJECT # 307074-01860-100

Project Name: 2013 Monitoring Program
Client: Apache Canada Ltd.
Drilled by: Hand Auger
Drilling Method: Hand Auger
Drill Date: 15 Aug 2013
Logged by: MAZL

Location: Pointed Mountain Plant Site
Northing: 6695821
Easting: 454749
Elevation: 0



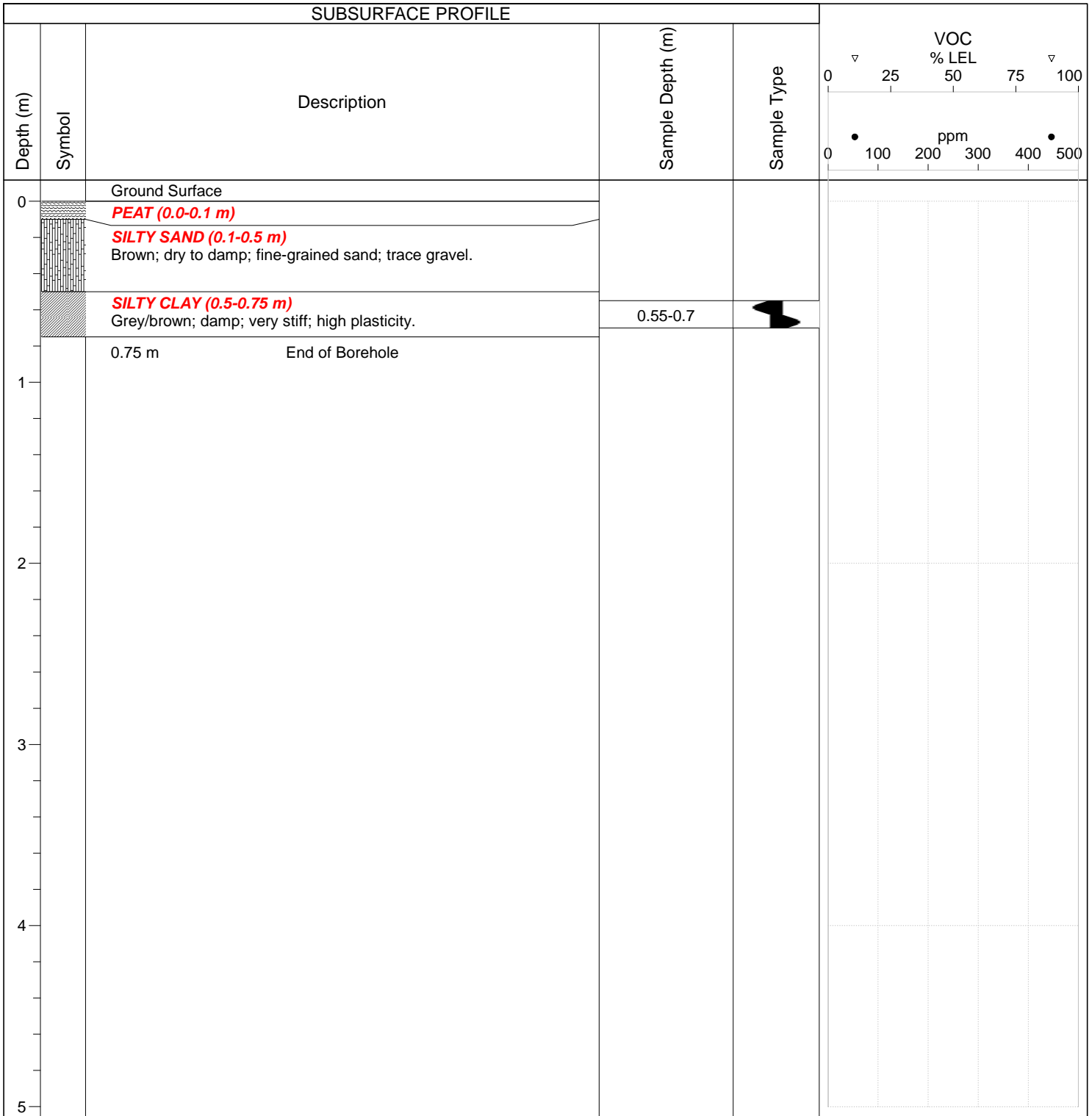


WorleyParsons
resources & energy

Borehole # GM12
PROJECT # 307074-01860-100

Project Name: 2013 Monitoring Program
Client: Apache Canada Ltd.
Drilled by: Hand Auger
Drilling Method: Hand Auger
Drill Date: 12 Aug 2013
Logged by: MAZL

Location: Pointed Mountain Plant Site
Northing: 6695594
Easting: 454829
Elevation: 0





WorleyParsons

resources & energy

Borehole # GM13

PROJECT # 307074-01860-100

Project Name: 2013 Monitoring Program

Client: Apache Canada Ltd.

Drilled by: Hand Auger

Drilling Method: Hand Auger

Drill Date: 12 Aug 2013

Logged by: MAZL

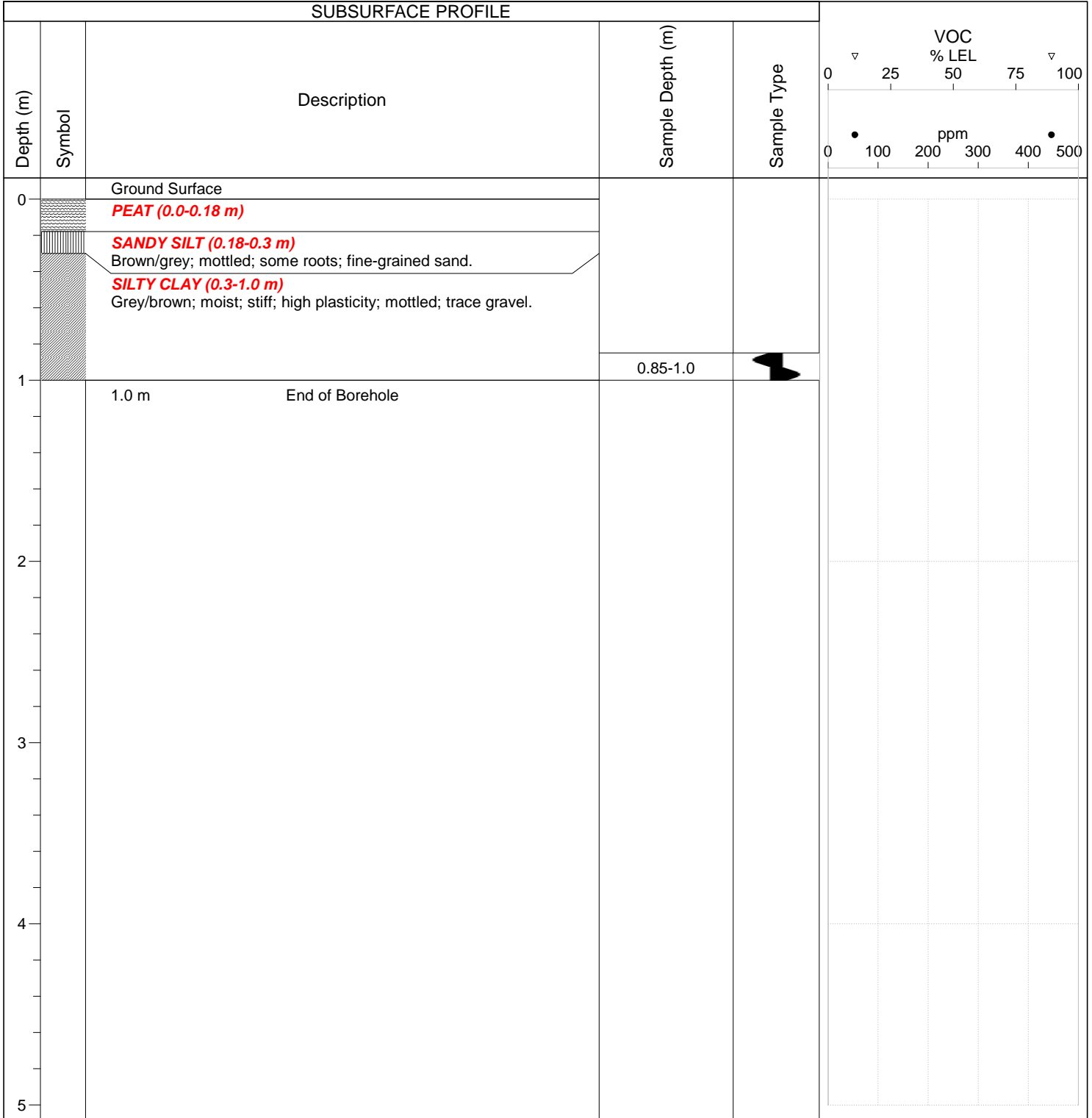
Location: Pointed Mountain Plant Site

Northing: 6695522

Easting: 454710

Elevation: 0

SUBSURFACE PROFILE



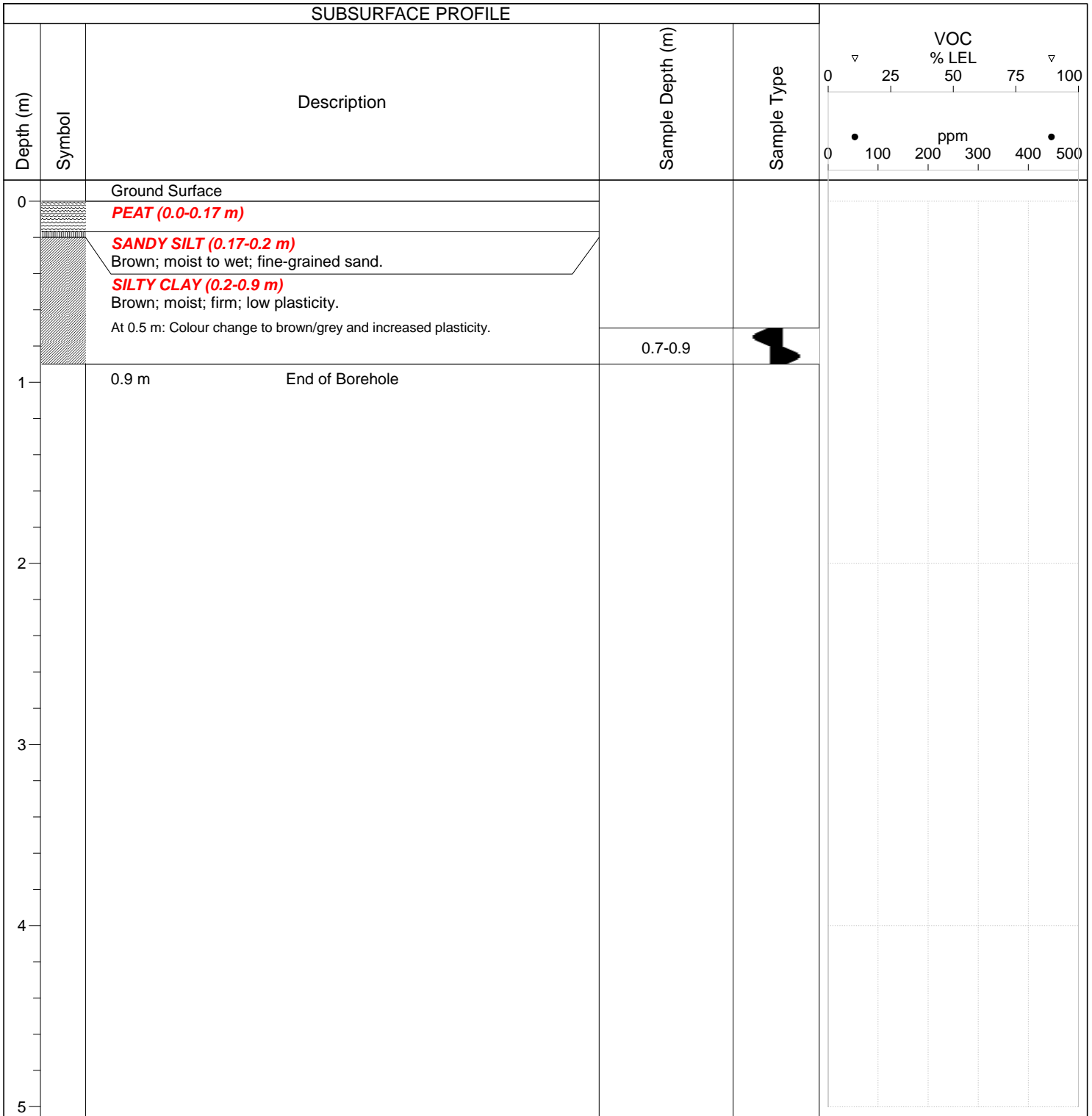


WorleyParsons
resources & energy

Borehole # GM14
PROJECT # 307074-01860-100

Project Name: 2013 Monitoring Program
Client: Apache Canada Ltd.
Drilled by: Hand Auger
Drilling Method: Hand Auger
Drill Date: 12 Aug 2013
Logged by: MAZL

Location: Pointed Mountain Plant Site
Northing: 6695586
Easting: 454610
Elevation: 0





WorleyParsons

resources & energy

Borehole # GM15

PROJECT # 307074-01860-100

Project Name: 2013 Monitoring Program

Client: Apache Canada Ltd.

Drilled by: Hand Auger

Drilling Method: Hand Auger

Drill Date: 12 Aug 2013

Logged by: MAZL

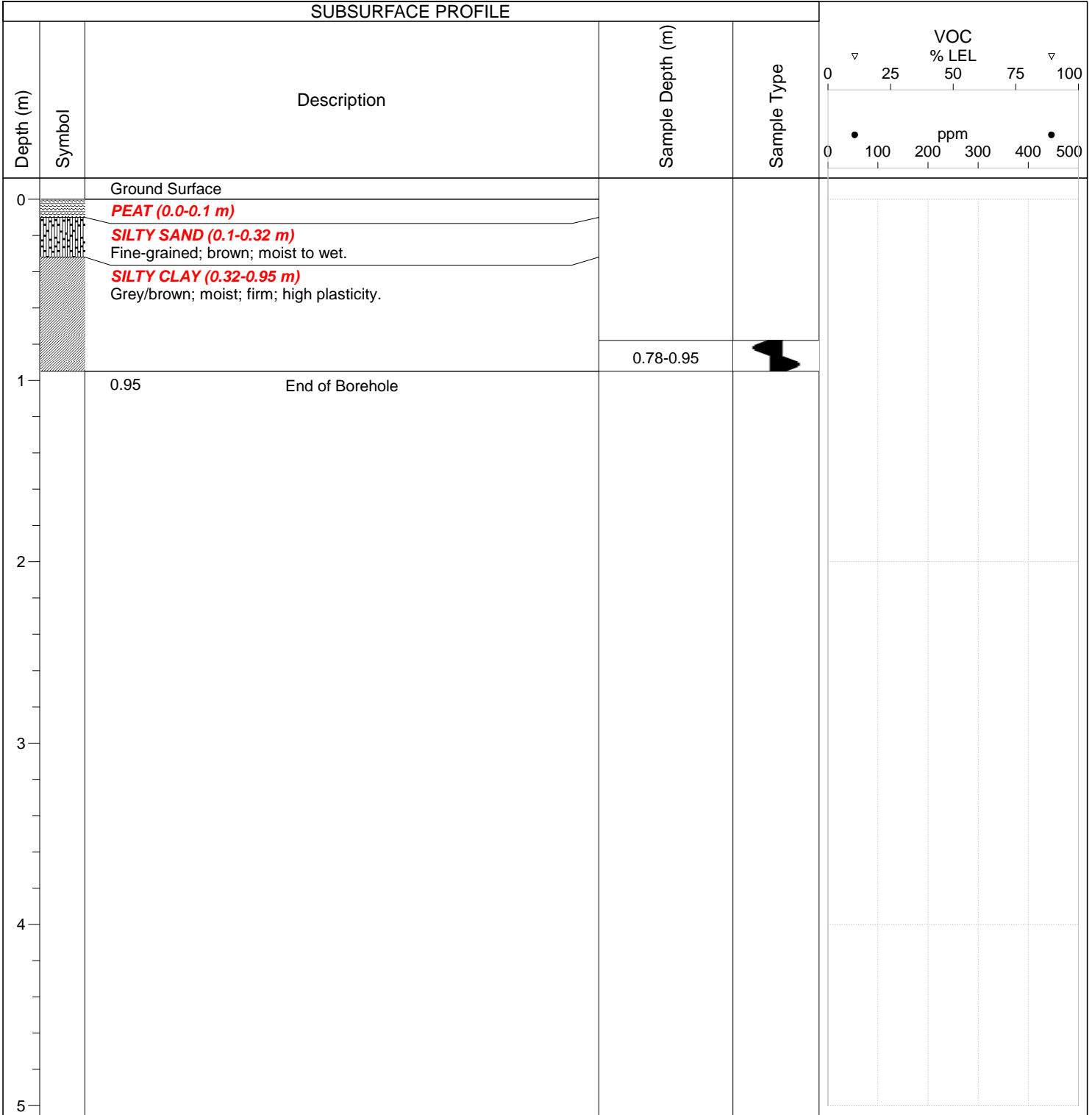
Location: Pointed Mountain Plant Site

Northing: 6695649

Easting: 454771

Elevation: 0

SUBSURFACE PROFILE



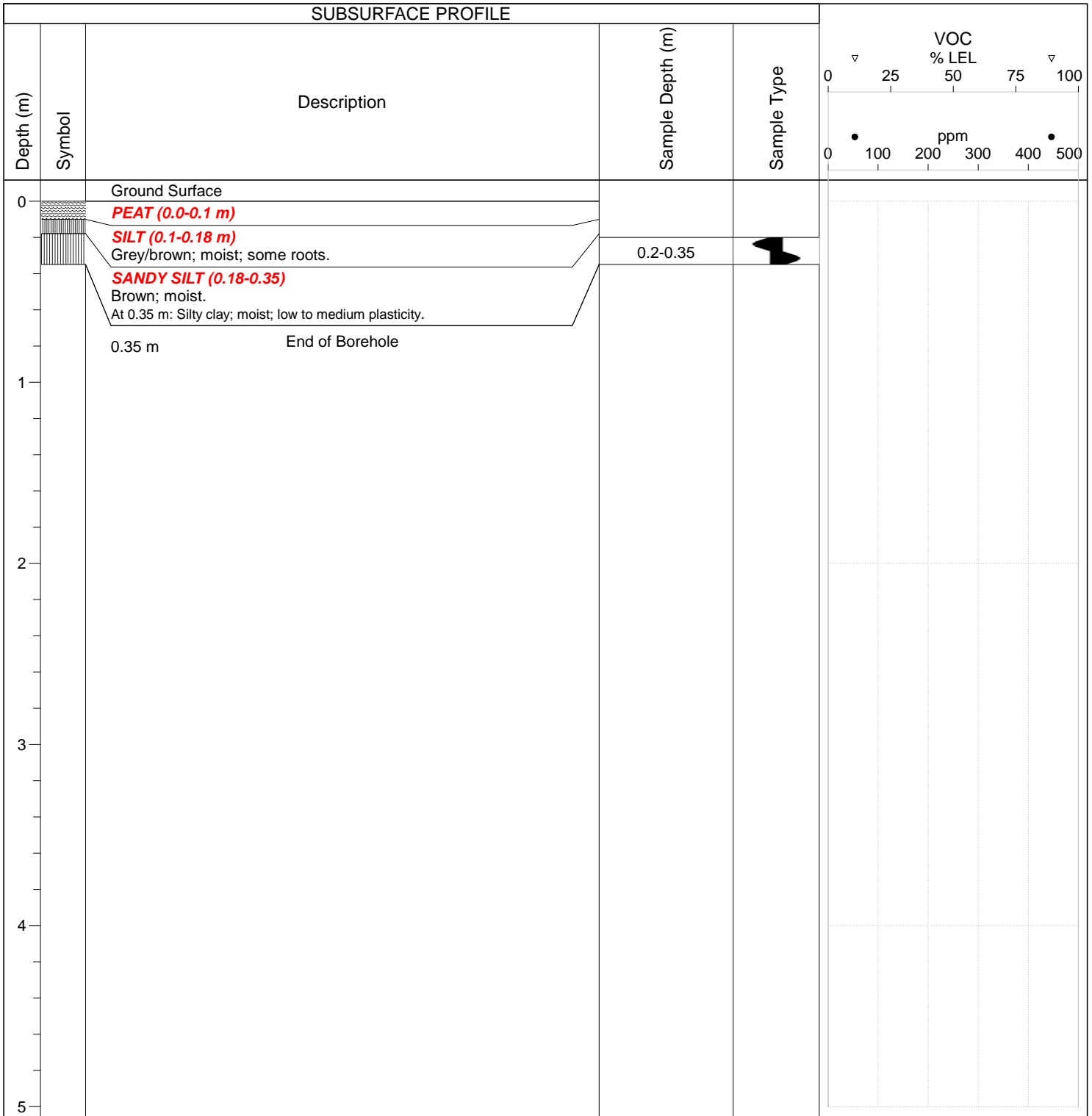


WorleyParsons
resources & energy

Borehole # V12 P7
PROJECT # 307074-01860-100

Project Name: 2013 Monitoring Program
Client: Apache Canada Ltd.
Drilled by: Hand Auger
Drilling Method: Hand Auger
Drill Date: 12 Aug 2013
Logged by: MAZL

Location: Pointed Mountain Plant Site
Northing: 6695502
Easting: 454659
Elevation: 0





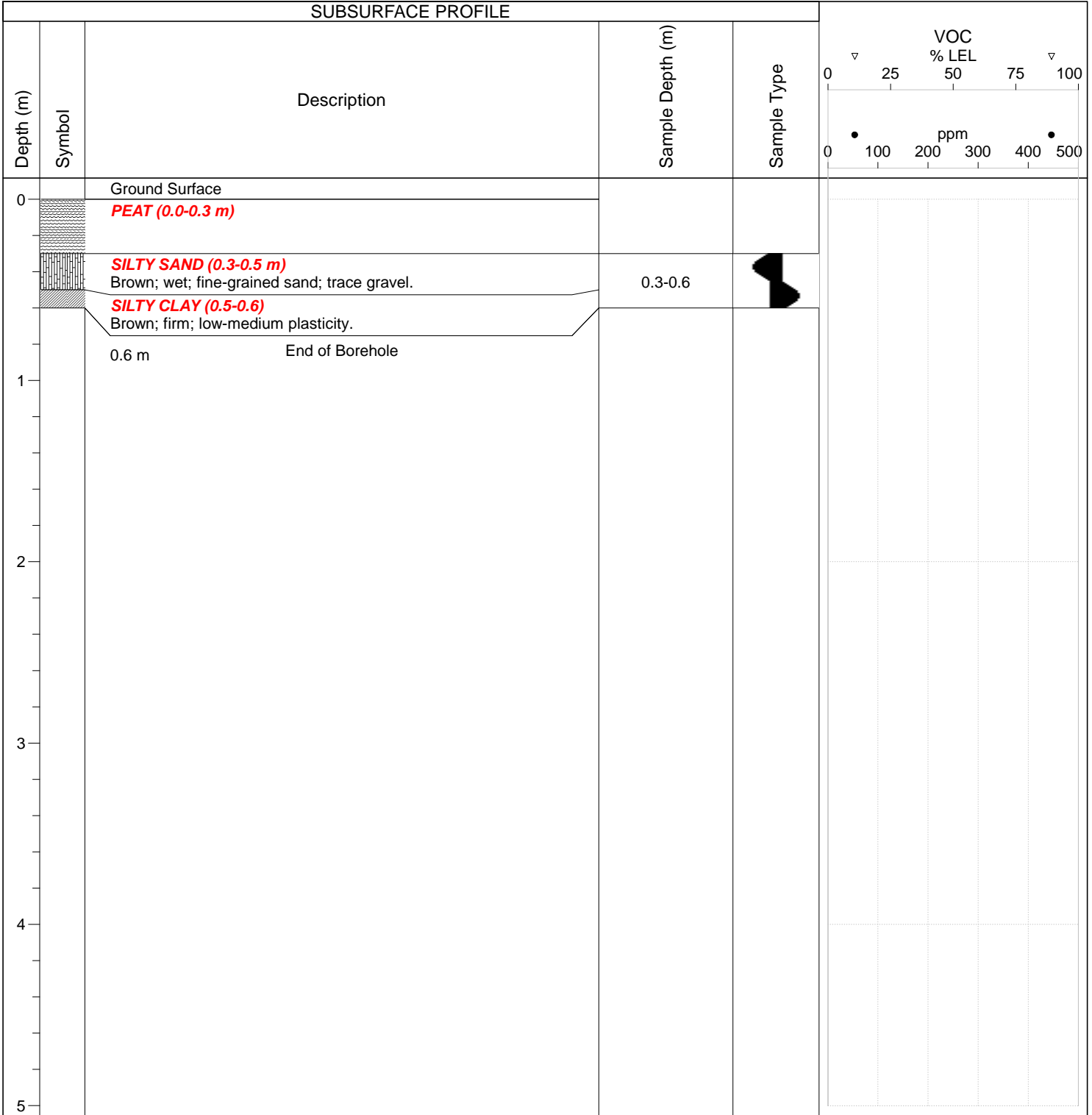
WorleyParsons
resources & energy

Borehole # V12 P8
PROJECT # 307074-01860-100

Project Name: 2013 Monitoring Program
Client: Apache Canada Ltd.
Drilled by: Hand Auger
Drilling Method: Hand Auger
Drill Date: 12 Aug 2013
Logged by: MAZL

Location: Pointed Mountain Plant Site
Northing: 6695484
Easting: 454576
Elevation: 0

SUBSURFACE PROFILE





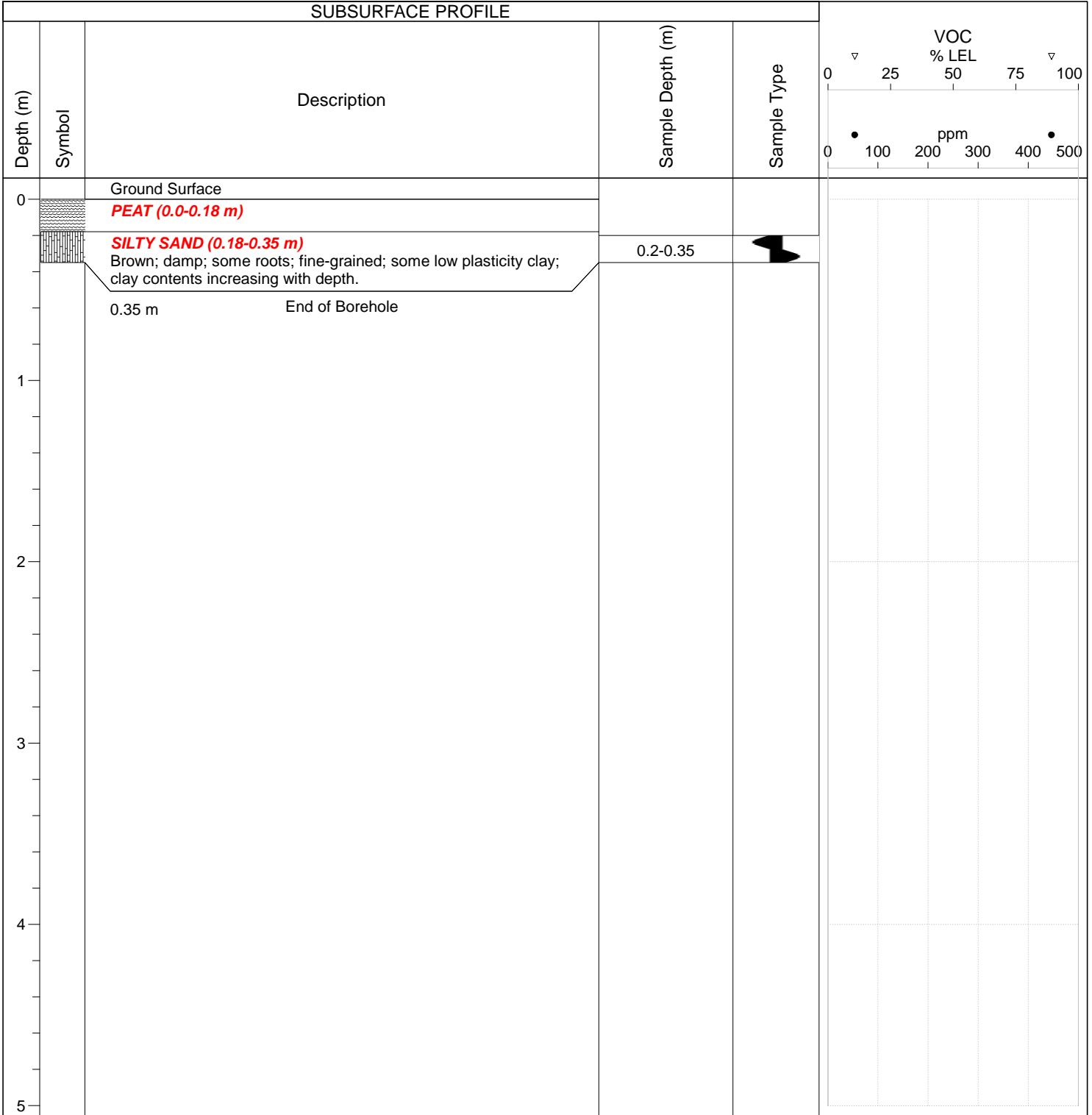
WorleyParsons
resources & energy

Borehole # V13 P17
PROJECT # 307074-01860-100

Project Name: 2013 Monitoring Program
Client: Apache Canada Ltd.
Drilled by: Hand Auger
Drilling Method: Hand Auger
Drill Date: 12 Aug 2013
Logged by: MAZL

Location: Pointed Mountain Plant Site
Northing: 6695446
Easting: 454643
Elevation: 0

SUBSURFACE PROFILE





WorleyParsons
resources & energy

Borehole # V13 P18
PROJECT # 307074-01860-100

Project Name: 2013 Monitoring Program
Client: Apache Canada Ltd.
Drilled by: Hand Auger
Drilling Method: Hand Auger
Drill Date: 12 Aug 2013
Logged by: MAZL

Location: Pointed Mountain Plant Site
Northing: 6695494
Easting: 454740
Elevation: 0

SUBSURFACE PROFILE

