



Telephone: (867) 872-2558 Ext. 26

May 1, 2024

Fort Smith Const. NT. Ltd.
P.O. BOX 1365
Fort Smith, NT X0E 0P0

Attention: Alden VOGT

File Number	MV2016Q0036
Type of Operation	QUARRY SITE - Existing
Location	Salt Mountain Quarry

Dear Alden VOGT,

An inspection of the above noted operation was conducted on April 23, 2024 by Resource Management Officer II Miles Barry and Resource Management Officer II Jarod Tuckey.

Enclosed is a copy of the Environmental Inspection Report. Please refer to the unacceptable and noted conditions in the general comments section of this report. Your attention to this matter is appreciated.

If you have any questions, please contact me at (867) 872-2558 Ext. 26.

Sincerely,

Miles Barry
Resource Management Officer II
Department of Environment and
Climate Change
South Slave Region

CC: Katie White, Manager, Resource Management, Land and Water, South Slave Region,
Department of Environment and Climate Change.

Mackenzie Valley Land and Water Board



ENVIRONMENTAL INSPECTION REPORT

Permittee:	Fort Smith Const. NT. Ltd.	Permit Expiry Date:	December 03, 2024
Land Use Permit No.	MV2016Q0036	Previous Inspection:	July 14, 2023
Quarrying Permit No.	2023QP0013 Expires June 25, 2026	Inspection Date:	April 23, 2024
Contractor:	Rowe’s Construction Ltd.	Subcontractor:	N/A
Location(s) Inspected:	Salt Mountain Quarry		
Current Stage of Operation:	Active		
Program Modifications Approved:	N/A		

Condition of Operation “A” – Acceptable “U” – Unacceptable “N/A” – Not Applicable “N/I” – Not Inspected

Operating Condition	Aspect Inspected				
	Quarry	Condtion #			
Time as Permitted	A				
Equipment as Approved (Type & Size)	A				
Methods & Techniques	A				
Facilities	A				
Erosion (Control or Prevention)	A				
Chemicals	U	16, 18			
Wildlife and Fisheries Habitat (Protection)	A				
Wastes	A				
Historical / Archaeological Sites	A				
Fuel Storage	U	31, 32			
Brush Disposal	A				
Restoration of Lands	A				
Permits	A				
Location as Permitted	A				

Explanatory Remarks -

On April 23, 2024, Resource Management Officer II’s Miles Barry and Jarod Tuckey conducted an inspection of Land Use Permit # MV2016Q0036, Salt Mountain Quarry. Quarrying operations are authorized under permit # 2023QP0013 (15’000 cubic meters of gravel). This permit expires June 25th, 2026, or once the authorized amount has been quarried. Please submit your monthly quarry return form. Quarry return forms are due monthly whether or not any material is quarried.

Inspectors observed various items stored in the northwest portion of the quarry (Figure 1-6). If any of these items are waste or not in use please remove them to an authorized waste facility.

Chemicals & Fuel Storage

Inspectors observed several opened and exposed 5 gallon pails of hydraulic fluid/oil and two exposed tubes of grease (Figure 10, 19-22). There were several areas where there was visible



ENVIRONMENTAL INSPECTION REPORT

hydrocarbon staining (Figure 13-15, 18-20). And the yellow crusher was actively leaking what appeared to be hydraulic fluid (Figure 13-15). There were drip trays present under some of the parked equipment (Figures 9, 16, 17, 26). There were no drip trays under the three assembled crushing machines.

As per permit condition #16:
“The Permittee shall maintain a record of all spills. For all reportable spills, in accordance with the GNWT Spill Contingency Planning and Reporting Regulations, the Permittee shall: a) immediately report each spill to the 24-hour Spill Report Line (867) 920- 8130; b) report each spill to an Inspector within 24 hours; and c) submit, to the Board and an Inspector, a detailed report on each spill within 30 days.

As per permit condition #18:
“The Permittee shall dispose of all combustible Waste petroleum products by removal to an approved disposal facility.”

As per permit condition # 31:
“All equipment that may be parked for two hours or more, shall have a hazmat/drip tray under it or be sufficiently diapered. Leaky equipment shall be repaired immediately.”

As per permit condition # 32:
“The Permittee shall clean up all leaks, spills, and contaminated material.”

Representative Signature



Inspector’s Signature



ENVIRONMENTAL INSPECTION REPORT

Inspection Images:

Figure 1

Lone tire at the south end of quarry, facing north.



Figure 2

Ten large tires at the northwest portion of quarry.





ENVIRONMENTAL INSPECTION REPORT

Figure 3

Scrap metal at the northwest portion of quarry.



Figure 4

Scrap metal and a trailer extension at the northwest portion of quarry.





ENVIRONMENTAL INSPECTION REPORT

Figure 5

Two portable water tanks at the northwest portion of the quarry.



Figure 6

Flatdeck trailer at the northwest portion of the quarry.





ENVIRONMENTAL INSPECTION REPORT

Figure 7
Crushing machines at the northeast portion of the quarry.



Figure 8
Generator trailer powering the crushing machines at the northeast portion of the quarry.





ENVIRONMENTAL INSPECTION REPORT

Figure 9

Drip tray full of water under the generator trailer.



Figure 10

Fuel and chemical storage outside of the generator trailer.





ENVIRONMENTAL INSPECTION REPORT

Figure 11
Generator trailer



Figure 12
Generator trailer and crusher connections.





ENVIRONMENTAL INSPECTION REPORT

Figure 13
Yellow crusher and hydrocarbon staining.



Figure 14
Closeup of hydrocarbon staining.





ENVIRONMENTAL INSPECTION REPORT

Figure 15

Hydrocarbon staining beneath yellow crusher, what appears to be hydraulic fluid is actively leaking.



Figure 16

A loader and semi truck parked in the northeast portion of the quarry. Drip trays were present.





ENVIRONMENTAL INSPECTION REPORT

Figure 17

Two crushing machines parked in the northeast portion of the quarry. Drip trays were present.

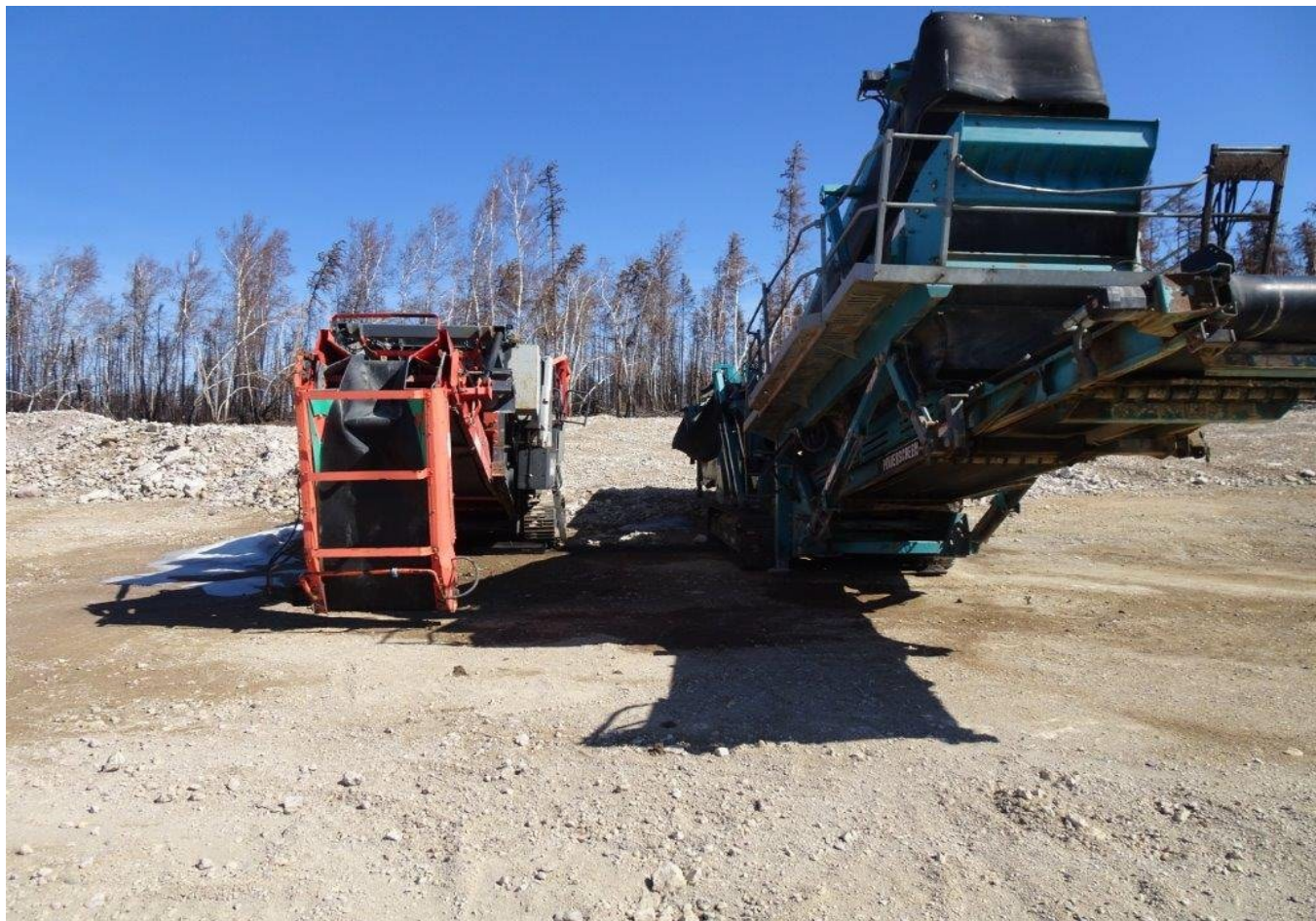


Figure 18

Hydrocarbon staining between the two parked crushing machines.





ENVIRONMENTAL INSPECTION REPORT

Figure 19

Two crushing machines and four 5 gallon pails of oil/hydraulic fluid. Visible hydrocarbon staining.



Figure 20

An opened pail of oil/hydraulic fluid and visible staining of sediments.





ENVIRONMENTAL INSPECTION REPORT

Figure 21

An opened pail of oil/hydraulic fluid.



Figure 22

Two tubes of grease were visible behind the red crushing maching.





ENVIRONMENTAL INSPECTION REPORT

Figure 23
Two tubes of grease.



Figure 24
A storage trailer parked in the northeast portion of the quarry.





ENVIRONMENTAL INSPECTION REPORT

Figure 25

Five 5 gallon pails of oil and hydraulic fluid stored underneath the trailer.



Figure 26

A mobile light plant with a drip tray.





ENVIRONMENTAL INSPECTION REPORT

Figure 27

Equipment and granular stockpiles in the north central portion of the quarry.



Figure 28

A flatdeck trailer with equipment.





ENVIRONMENTAL INSPECTION REPORT

Figure 29

An enclosed storage trailer.



Figure 30

A mobile conveyor.

