



Appendix B

Mon Property Camp

V. 1.0

Introduction

A tent camp with two sleep tents, one office/sleep tent, one core shack, one dry and one kitchen on plywood platforms (6 units) have been placed as shown on MAPXX. In addition, an outhouse has been placed near the esker as shown on MAPXX. It is proposed that this continue to be used as it has under MV2015C0015 with up to nine people until a more permanent trailer camp can be installed.

A six-unit ATCO trailer camp is planned to be installed together with a sewage treatment plant (bioreactor). This camp has the capacity for up to 26 people although it will be set-up for 12 people.

All supplies not brought in by winter road will be flown into camp by fixed or rotary wing aircraft. All waste materials will be removed by winter road if stable or by fixed or rotary wing aircraft if organic. An approved incinerator will burn all combustible material. All waste products will be disposed of according to the approved Waste Management Plan.

Operations

The established tent camp will have proven to be acceptable for seasonal surface exploration efforts however the more robust trailer camp will be needed as facilities for underground exploration crews are needed.

Tent Camp

All domestic water is pumped from Discovery Lake into a 0.7 m³ supply tank for showers and laundry needs. Potable water is collected in 26 litre water tanks from Discovery Lake.

A sump behind the tent camp collects and holds all discharge from showers, laundry, and grey water from the kitchen.

An outhouse is located at the north-end of the existing tailings pond near the esker. Holes are dug and buried as needed.

Waste products are domestic only, are consolidated and removed several times per month, according to the Waste Management Plan.

Trailer Camp

Water will be pumped from Discovery Lake into a 9 m³ poly tank for all domestic needs.

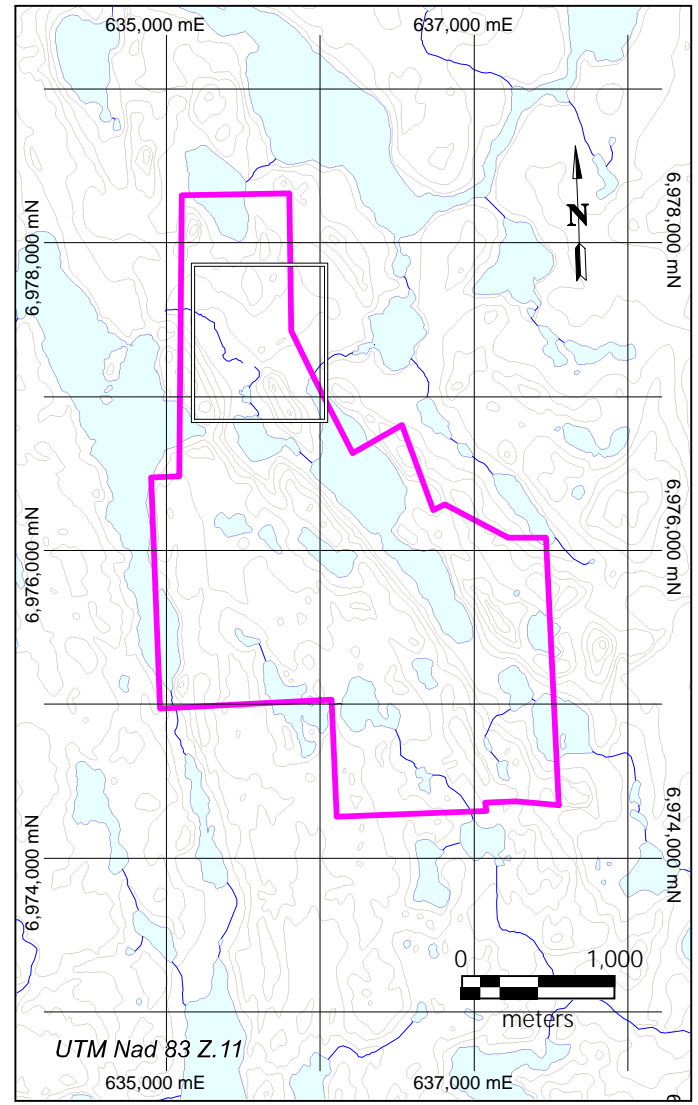
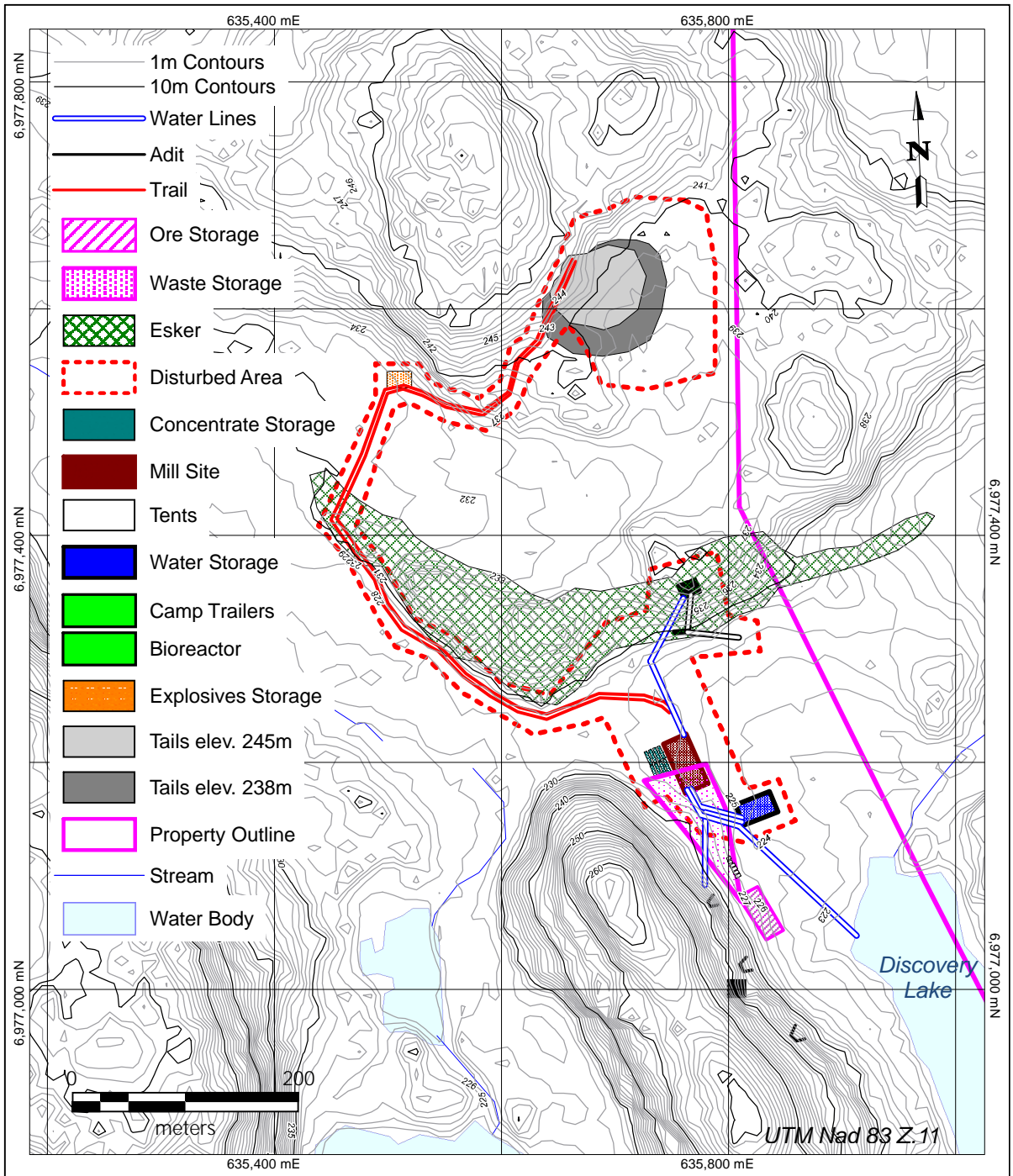
All liquid discharge will be collected into a containerized 3 stage bioreactor for processing, clarification, aeration and discharge into the broad depression north of the esker.

All domestic waste will be handled according to the Waste Management Plan.

Personnel

The camp will be occupied during the summer while exploration is constrained to surface exploration only. Once underground exploration commences, the trailer camp will be used and the tent camp will be removed.

Operations	Accommodation	Personnel	Season
Surface Exploration Only	Tent camp	Up to six	Summer only
Surface Expl. with diamond drilling	Tent Camp	Up to eight	Summer only
Underground Exploration	Trailer Camp	Up to twelve	All season



New Discovery Mines Ltd.
 Mon Property
 Mine/Camp Infrastructure
 April, 2020