



March 28, 2025

Angela Love

Regulatory Specialist
Mackenzie Valley Land and Water Board
PO Box 2130
Yellowknife, NT, X1A 2P6

RE: Submission of 2024 Annual Water Licence Reports for MV2022L8-0008 and MV2022L8-0009

Ms. Love,

Please find, attached, EREX International Ltd. (EREX)'s 2024 Annual Report for Non-federal Type B Water Licence MV2022L8-0008 and Federal Type B Water Licence MV2022L8-009 for the Yellowknife Lithium Project in accordance with Part B, Condition 19 of the Water Licences.

EREX has reviewed the following Mackenzie Valley Land and Water Board (MVLWB)-approved Management Plans in accordance with Part B, Condition 9 of the Water Licences and concluded that no revisions are required at this time:

- Engagement Plan (Version 2.0)
- Spill Contingency Plan (Version 3.0)
- Waste Management Plan (Version 3.0)
- Closure and Reclamation Plan (Version 2.1)

As per Part I, Condition 6 of Licence MV2022L8-0008 and MV2022L8-009, EREX is informing that no further progressive reclamation beyond what has already been completed will take place in 2025.

EREX, and its parent company Li-FT Power Ltd., appreciates the collaborative and ongoing dialogue with interested and potentially affected parties, regulatory stakeholders, and MVLWB staff. Please do not hesitate to reach out to me should you have any questions or require any additional information.

Sincerely,

April Hayward, Ph.D., MBA (Finance)
Chief Sustainability Officer
Li-FT Power Ltd.
Cell +1 (867) 686-8375
email: april@li-ft.com



**2024 Annual Report for
Water Licences MV2022L8-0008
and
MV2022L8-0009**

**Yellowknife Lithium Project, NT
North Slave Region, NT**

March 28th, 2025

**Prepared by
Equity Exploration**

**for
EREX International Ltd.
1218-1030 West Georgia St.
Vancouver, BC, V6E 3M5**

Table of Contents

1	Introduction.....	4
a)	Brief Summary of Project Activities.....	4
b)	Updated Project Schedule	5
c)	Monthly and Annual Quantities of Fresh Water Obtained from All Sources (per Part B, Condition 18 of the Licences)	5
d)	Calibration and status of water meters and Devices (per Part B, Condition 18 of the Licences) ...	5
e)	Summary of Activities Conducted in accordance with the Approved Engagement Plan (per Part B, Condition 20 of the Licences).....	5
f)	Traditional Knowledge.....	5
g)	Major Maintenance Activities	6
h)	Summary of Activities Conducted in accordance with the Approved Waste Management Plan...	6
i.	Facilities and Processes Upgrades or Changes	6
ii.	Monthly and Annual Drill Waste Discharge by Location	6
iii.	Monthly and Annual Sewage Discharge by Location.....	6
iv.	Map depicting the location of the Sumps	7
i)	Summary of Activities Conducted in accordance with the Approved Explosives Management Plan7	
i.	Approved Facilities and Processes Upgrades or Changes	7
ii.	Monthly and annual quantities/volumes by location of explosives.....	7
iii.	Monitoring Results	7
iv.	Action Level exceedances	7
v.	Actions taken in response to any Action level exceedances	7
j)	Summary of Activities Conducted in accordance with the Approved Spill Contingency Plan	7
i.	Unauthorized Discharges Log	7
ii.	Spill Training.....	8
k)	Summary of Activities Conducted in accordance with the Approved Closure and Reclamation Plan (per Part I, Condition 1 of the Licences)	8
i.	Details of any Progressive Reclamation undertaken	8
ii.	A discussion on whether planning and implementation remains on schedule, and a summary of any new scheduling setbacks	8
iii.	A summary of engagement conducted regarding Closure and Reclamation.....	8

iv. A list of any factors that would increase or decrease the Closure Cost Estimate the next time the Estimate is updated	9
l) Tabular summaries of all data and information generated under the SNP annexed to this Licence, in Excel format.....	9
m) Summary and interpretation of the results from the geochemical characterization and a discussion on the Potential for acid rock drainage and metal leaching.....	9
n) List of any non-compliance(s) with the conditions of this Licence or any directive from the Board pursuant to the conditions of this Licence	9
o) A summary of actions taken to address concerns, non-conformances, or deficiencies in any reports filed by an Inspector	9
p) Any Other Details requested by the Board by November 30 th of the Year Being Reported.....	10

Tables

Table 1: Monthly and Annual Greywater and Pit Latrine Volumes Discharged by Location	7
--	---

Appendices

Appendix A: Monthly and Annual Quantities of Freshwater Used by Source
Appendix B: Monthly and Annual Quantities of Drill Waste by Location
Appendix C: Maps of Water Use and Sump Locations
Appendix D: Daily Water Use by Source

1 Introduction

Li-FT Power Ltd. (Li-FT) is a Canadian critical minerals exploration company focused on identifying and defining potential lithium resources in Canada. Li-FT is based in Vancouver, British Columbia and is publicly traded on the TSXV (LIFT), OTCQX (LIFF), and FRA (WSO). Li-FT has assets in Quebec and the Northwest Territories (NT). In the NT, Li-FT's assets are held by its wholly-owned subsidiary, EREX International Ltd. (EREX or the Company) and include the Yellowknife Lithium Project and the DeStaffany Project in the North Slave Region, the Lac de Gras Project in the North Slave and Wek'eezhii regions, and the CALI Project in the Dehcho and Sahtu regions. The Yellowknife Lithium Project (the Project) is the subject of this report.

The Project includes two exploration camps: Hidden Lake Camp, which is located on Federal Land and supports exploration in the Hidden Lake area, and Echo Area Camp, which is located on Non-Federal land and supports exploration in the Echo area. Exploration on the Big and Nite leases is generally supported out of Yellowknife. Exploration activities included diamond drilling, geological mapping and sampling near pegmatite dykes. Winter exploration activities were supported by the construction of an ice airstrip, winter roads and trails.

This Annual Report is being filed with the Mackenzie Valley Land and Water Board (MVLWB) in accordance with Part B, Condition 19 of both Water Licence MV2022L8-0008 (for Non-Federal areas) and Water Licence MV2022L8-0009 (for Federal areas) and summarizes activities and monitoring undertaken at the Company's Yellowknife Lithium Project in calendar year 2024. For ease of comparison, each subheading of this report has been directly aligned with the reporting requirements outlined in Schedule 1 of MV2022L8-0008 and MV2022L8-0009 (the Licences), which are identical.

a) Brief Summary of Project Activities

In 2024, EREX undertook exploration work to evaluate the presence and quality of lithium-bearing minerals, predominantly spodumene, in the pegmatite dykes that occur on leases held by EREX. A total of 91 drill holes were drilled on EREX's leases in 2024. Water for drilling was pumped from approved sources in proximity to the drill holes. Drill cuttings were placed in natural depressions in accordance with EREX's Waste Management Plan. Construction of the Thompson-Lundmark winter road began in late 2023, with completion in early 2024. The Tanco Lake airstrip began construction in early December 2023 and was completed in early January 2024. The Big Hill Lake Winter Road was constructed in early 2024.

The Hidden Lake Camp was established in 2023 to serve drill crews, geologists and associated technicians, and environmental scientists conducting exploration and environmental baseline studies in the area. Hidden Lake Camp entered Temporary closure in April 2024, with the camp partially demobilised. Access to the Hidden Lake Camp during summer occurred via helicopter or float equipped fixed-wing aircraft. Access during winter occurred via the Thompson-Lundmark winter road and helicopter. Waste products generated by the Hidden Lake Camp and associated activities were managed according to EREX's Waste Management Plan.

The Echo Area Camp was established in 2023 to serve drill crews, geologists and associated technicians, and environmental scientists conducting exploration and environmental baseline studies in the area. Echo Camp entered Temporary closure in April 2024. Access to the Echo area during summer occurred via helicopter or float equipped fixed-wing aircraft; access during winter occurred via helicopter or fixed-wing aircraft utilising an ice airstrip constructed upon Tanco Lake. Waste generated at the Echo Area Camp and associated activities were managed according to EREX's Waste Management Plan.

b) Updated Project Schedule

Exploration activities aimed at defining the extent and quality of potential lithium resources will continue seasonally and as needed through the term of this Licence throughout the Project area.

c) Monthly and Annual Quantities of Fresh Water Obtained from All Sources (per Part B, Condition 18 of the Licences)

All water uses by month, year, and water source are outlined in Appendix A. Daily water usage can be found in the Monthly Surveillance Network Program (SNP) reports filed on the MVLWB public registry at <https://mvlwb.com/registry/mv2022l8-0009> and are discussed in Section L of this report.

d) Calibration and status of water meters and Devices (per Part B, Condition 18 of the Licences)

Water use to the drill units was measured by GPI 01N31GM flow meters. GPI 01N31GM are factory calibrated for water with no user adjustment or calibration available. Where flow meters could not practically be installed inline with the pump due to freezing conditions, water volumes were calculated using full tank fills (e.g., on water trucks) or by multiplying the maximum pump flow rate by the recorded time of pump use.

e) Summary of Activities Conducted in accordance with the Approved Engagement Plan (per Part B, Condition 20 of the Licences)

EREX communicated with interested and potentially affected parties regarding its activities via text, phone, and email throughout 2024. EREX also held a number of virtual and in-person meetings to inform interested and potentially affected parties of its plans and solicit feedback. Additionally, EREX organized several walking site tours to the Nite lease over the summer, offering transportation to showcase an exploration site and discuss hard rock lithium exploration.

f) Traditional Knowledge

EREX conducted archaeological studies, including Archaeological Overview Assessments and Archaeological Impact Assessments (AIA), in accordance with Conditions 56 and 57 Land Use Permit MV2022C0021 in 2023. Elders from a number of Indigenous communities joined the technical team on the ground for the AIAs. Exploration activities were adjusted based on the outcome of the studies, including Traditional Knowledge provided during the surveys. EREX also hosted an elders mapping session with members of the Yellowknives Dene First Nation on February 9th, 2023 and sponsored an elders mapping session with members of the Yellowknives Dene First Nation on March 7th, 2024.

EREX held meetings with communities in April 2024 to present and request feedback on upcoming baseline programs. Community input was integrated into program planning. Community members were included in baseline data collection field programs and provided input on camera placement for the wildlife program and daily program planning.

g) Major Maintenance Activities

Hidden Lake Camp and Echo Camp were constructed in 2023 and supported drilling activities between January and early April 2024. Hidden Lake Camp entered Temporary closure and was partially demobilised during April 2024, being reduced to 20 tent platforms, 5 tents, 4 hard-sided shacks and 2 helicopter pads. All heavy machinery and drill equipment was removed from site during demobilisation. Echo Camp entered Seasonal closure on April 13th, 2024. All diamond drills and drill equipment were removed from the Echo area on July 5th, 2024. Echo camp entered Temporary closure and was partially demobilised in July 2024, by removing one 12kW generator and an incinerator.

Construction of the Thompson-Lundmark winter road began on December 17th, 2023, opening to specific equipment on January 16th, 2024, and to all traffic on January 24th, 2024. The Thompson-Lundmark winter road officially closed on the April 12th, 2024. The Big Hill Lake Winter Road began construction on January 21st, 2024, and completed construction on February 21st, 2024. The Big Hill Lake Winter Road officially closed on March 22nd, 2024. Construction of the Tanco Lake airstrip began on December 7th, 2023, with completion on January 4th, 2024.

Minor maintenance was completed on Hidden Lake Camp and Echo camp on September 17th & 18th 2024.

h) Summary of Activities Conducted in accordance with the Approved Waste Management Plan

i. Facilities and Processes Upgrades or Changes

Waste management facilities were constructed at the Hidden Lake and Echo Area camps in 2023 in accordance with the MVLWB-approved Management Plans and Project Descriptions submitted to the MVWLB previously. No other upgrades or changes to waste management facilities were made in 2024.

ii. Monthly and Annual Drill Waste Discharge by Location

Drilling waste was pumped from the drill to authorized natural depressions in accordance with the Waste Management Plan. The locations and volumes of drilling waste placement are provided by month in Appendix B.

iii. Monthly and Annual Sewage Discharge by Location

Hidden Lake Camp

All sewage was incinerated in Incinolet toilets and transferred off site to an approved waste management facility in Yellowknife, in accordance with the Waste Management Plan. Monthly and annual greywater discharged by sump location within the Hidden Lake Camp area is provided in 2.

Echo Area Camp

All greywater was collected in two covered sumps, approximately 2-3m long, 1m wide and 1m deep. Blackwater was collected in pit latrines, which were approximately 0.5m long, 0.5m wide, and 1.5m deep. Blackwater sumps were treated with lime on an as-needed basis. All sumps are located on non-Federal Land at least 100m from the Ordinary Highwater Mark of the nearest watercourse unless otherwise authorized by an Inspector. Monthly and annual greywater and blackwater (sewage) discharged by sump location within the Echo Camp area is provided in Table 2.

Table 1: Monthly and Annual Greywater and Pit Latrine Volumes Discharged by Location

Camp	Sump Type	Sump ID	UTM Zone	UTM E	UTM N	Jurisdiction	Jan Vol. (m ³)	Feb Vol. (m ³)	Mar Vol. (m ³)	Apr Vol. (m ³)	Annual Total	Date of Use	Date of Closure
Hidden	Greywater	HG1	12N	370536	6938542	Federal	3.48	5.30	4.72	1.53	15.03	N/A	N/A
Hidden	Greywater	HG2	12N	370640	6938427	Federal	13.90	21.19	18.89	6.13	60.12	N/A	N/A
Hidden	Greywater	HG3	12N	370646	6938418	Federal	52.14	79.46	70.85	23.00	225.44	N/A	N/A
Echo	Greywater	EG1	12N	436334	6922915	Territorial	84.70	126.00	130.20	46.20	387.10	N/A	N/A
Echo	Greywater	EG2	12N	436334	6922912	Territorial	36.30	54.00	55.80	19.80	165.90	N/A	N/A
Echo	Blackwater	T1	12N	436373	6922948	Territorial	0.50	0.25	0.00	0.50	< 1.25	9/20/2023	N/A
Echo	Blackwater	T2	12N	436310	6922928	Territorial	0.50	0.25	0.00	0.00	< 0.75	9/20/2023	N/A
Echo	Blackwater	T3	12N	436365	6922958	Territorial	0.50	0.25	0.00	0.50	< 1.25	9/20/2023	N/A
Echo	Blackwater	T4	12N	436308	6922937	Territorial	0.50	0.25	0.00	0.00	< 0.75	9/20/2023	N/A
Echo	Blackwater	T5	12N	438718	6922662	Territorial	0.00	0.25	0.25	0.25	< 0.75	2/14/2024	N/A
Echo	Blackwater	T6	12N	436371	6922951	Territorial	0.00	0.25	0.50	0.00	< 0.75	2/15/2024	N/A
Echo	Blackwater	T7	12N	436370	6922955	Territorial	0.00	0.25	0.50	0.00	< 0.75	2/15/2024	N/A
Echo	Blackwater	T8	12N	436309	6922933	Territorial	0.00	0.00	0.25	0.25	< 0.5	2/17/2024	N/A

iv. Map depicting the location of the Sumps

All sump locations are depicted in the Figures presented in Appendix C.

i) Summary of Activities Conducted in accordance with the Approved Explosives Management Plan

No explosives have been required for the Project to date. As such, no Explosives Management Plan has been developed for the Project.

i. Approved Facilities and Processes Upgrades or Changes

Not applicable.

ii. Monthly and annual quantities/volumes by location of explosives

Not applicable.

iii. Monitoring Results

Not applicable.

iv. Action Level exceedances

Not applicable.

v. Actions taken in response to any Action level exceedances

Not applicable.

j) Summary of Activities Conducted in accordance with the Approved Spill Contingency Plan

i. Unauthorized Discharges Log

No spills meeting NT/NU reporting thresholds occurred under this Licence in 2024.

ii. **Spill Training**

All employees and contractors received instruction in safe fuel handling, spill response, and spill reporting as part of the site induction in accordance with the MVLWB-approved Spill Contingency Plan.

k) **Summary of Activities Conducted in accordance with the Approved Closure and Reclamation Plan (per Part I, Condition 1 of the Licences)**

Version 2.1 of Closure and Reclamation Plan was submitted to the MVLWB for a conformity determination and approved on March 20th, 2024. Version 2.1 included details addressing comments received during the October 2023 Type A Land Use Permit and Type B Water Licence amendment applications, regarding interim care, maintenance, and post-closure inspections.

No activities related to final closure and reclamation were undertaken in 2024, with the exception of progressive reclamation of each drill site. Both Hidden Lake Camp and Echo Camp entered Temporary closure in 2024. Interim Care and Maintenance Inspections (ICMI) were completed for Echo Camp on September 17th, 2024. ICMI's for Hidden Lake Camp were completed on September 18th, 2024. Any issues identified during the ICMI's were addressed at the time of inspection, and both camps met the Temporary closure Objectives outlined in the Closure and Reclamation Plan (Version 2.1).

i. **Details of any Progressive Reclamation undertaken**

All 91 drill sites that were used in 2024 have been reclaimed in accordance with Conditions #81 and #82 of the Land Use Permit and the MVLWB-approved Closure and Reclamation Plan. In the May 2nd, 2024, Environmental Inspection Report conducted for Land Use Permit MV2022C0021,¹ the Inspector reported "The Permittee completed ninety-one (91) drill holes during the Winter Program and overall, the Inspectors were pleased with the restoration of trails & drill sites with only a few minor concerns noted."

ii. **A discussion on whether planning and implementation remains on schedule, and a summary of any new scheduling setbacks**

Project planning and implementation remains on schedule with exploration activities planned to continue as needed over the duration of the terms of these exploration water licences.

iii. **A summary of engagement conducted regarding Closure and Reclamation**

Engagement related to the updated Closure and Reclamation Plan, and the Project as a whole, was outlined in an update to the Engagement Record submitted with the Engagement Plan submitted with the applications amend MV2022C0021, MV2022L8-0008, MV2022L8-0009 in the spring and autumn of 2023. No further engagement related to Closure and Reclamation was completed in 2024.

During the Nite site visits, we showcased a reclaimed drill site, including a Drilling Waste Sump, and received no feedback necessitating action; in fact, attendees were surprised by how innocuous the Drilling Waste Sump appeared.

¹ <https://registry.mvlwb.ca/Documents/MV2022C0021/EREX%20-%20April%2030%20Inspection%20Report%20-%20May%2024.pdf>

- iv. A list of any factors that would increase or decrease the Closure Cost Estimate the next time the Estimate is updated

The closure cost estimate for MV2022C0021, MV2022L8-0008, and MV2022L8-0009 was most recently updated during the MVLWB-administered process to amend MV2022C0021, MV2022L8-0008, and MV2022L8-0009 and was approved by the MVLWB on December 12, 2023. EREX notes that the removal of some buildings and equipment from site during 2024 and the progressive reclamation of drill sites as soon as drilling is complete at any given site would result in a decrease in the Closure Cost Estimates. EREX would like to maintain operational flexibility in terms of the quantity of fuel and equipment permitted and accounted for in the Closure Cost Estimates and does not wish to update the Closure Cost Estimates at this time.

- l) Tabular summaries of all data and information generated under the SNP annexed to this Licence, in Excel format

A total of 56 SNP Stations were active in 2024 and relate to daily monitoring of water volumes used. This information has been provided in Excel format, as Appendix D of this report. Monthly SNP Reports were also filed with the MVLWB for this period and are available on the public registry.

- m) Summary and interpretation of the results from the geochemical characterization and a discussion on the Potential for acid rock drainage and metal leaching

Geochemical characterizations were started in 2024, and are still in progress. No results are available at this time.

- n) List of any non-compliance(s) with the conditions of this Licence or any directive from the Board pursuant to the conditions of this Licence

Exceedances of 299 m³/day combined daily water allotments occurred on January 18th and 29th, by 5.6 m³ and 0.6 m³ respectively, as reported in the January 2024 SNP Report. The Water Resource Officer for the North Slave Region (Department of Environment and Climate Change) was notified at the time regarding the noncompliance with permit MV2022L8-0008 and no follow-up action was requested.

An outstanding directive from the MVLWB in 2023, to update the Closure and Reclamation Plan (Version 2.1) and submit for a conformity check by January 15th, 2024, was completed and approved on March 20th, 2024.

- o) A summary of actions taken to address concerns, non-conformances, or deficiencies in any reports filed by an Inspector

No major concerns, non-conformances, or deficiencies were noted during any of the Inspections that took place in 2024. Minor items noted by the Inspectors at the time of the Inspection were addressed as soon as possible to the Inspectors' satisfaction and no future actions were required.

p) Any Other Details requested by the Board by November 30th of the Year Being Reported

No other requests that required further reporting were made by the MVLWB prior to November 30th, 2024.

Appendix A. Monthly and Annual Quantities of Freshwater Used by Source

[illegible]

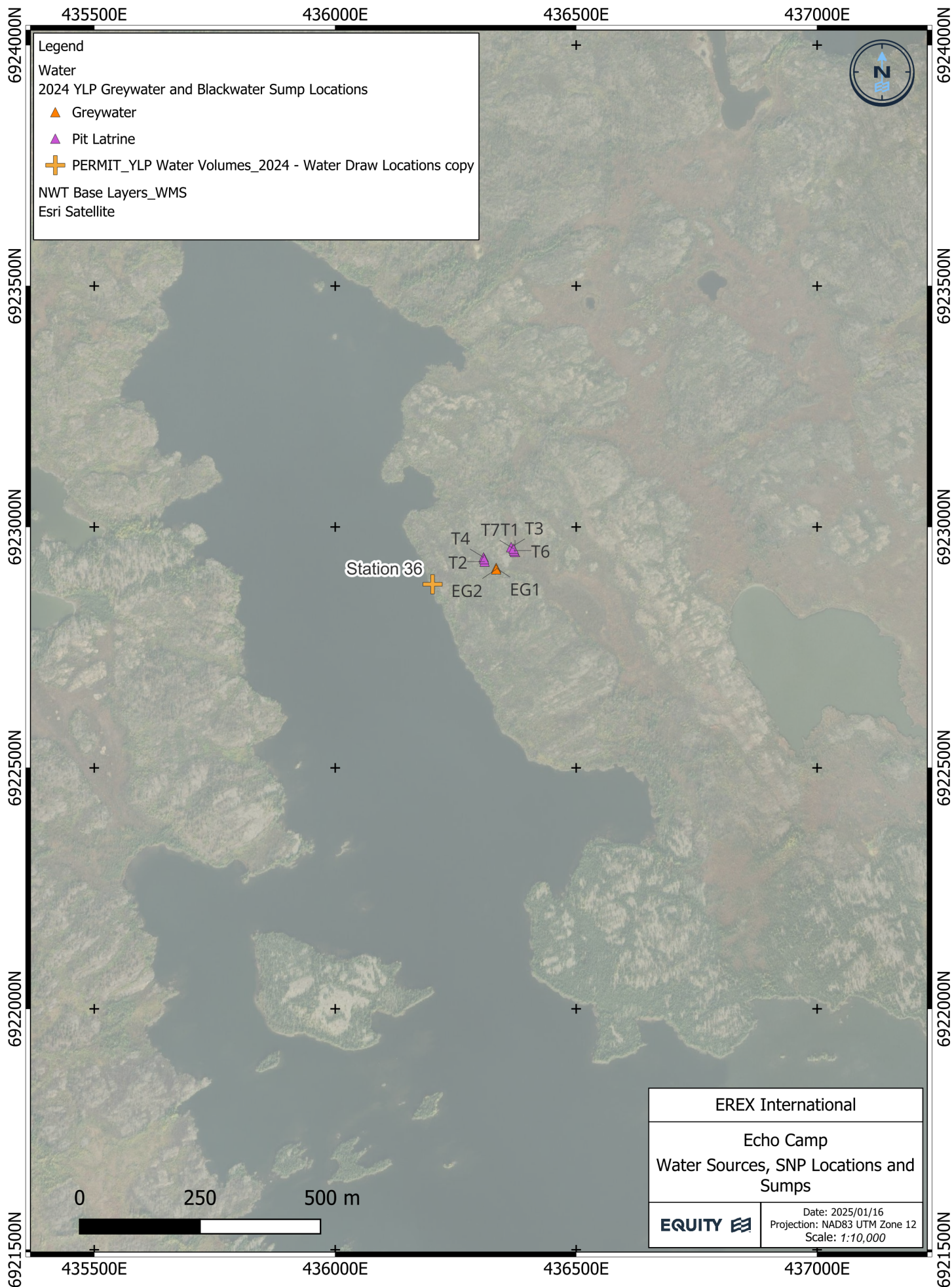
Source ID	Water Licence # MV2022L8-0008 or - 0009*	Allowance (m3)	Latitude	Longitude	Jan Vol. (m3)	Feb Vol. (m3)	Mar Vol. (m3)	April Vol. (m3)	May Vol. (m3)	Jun Vol. (m3)	Jul Vol. (m3)	Aug Vol. (m3)	Sept Vol. (m3)	Oct Vol. (m3)	Nov Vol. (m3)	Dec Vol. (m3)	Annual Total Vol. (m3)	Used (%)
E43	-0008 and -0009	16,815	62.36553	-112.71700	0	0	0	0	0	0	0	0	0	0	0	0	0	0%
E44	-0008	7,621	62.37527	-112.76300	0	0	0	0	0	0	0	0	0	0	0	0	0	0%
E45	-0008	17,531	62.38478	-112.80800	0	0	0	0	0	0	0	0	0	0	0	0	0	0%
E46	-0008	14,569	62.40584	-112.81200	0	0	0	0	0	0	0	0	0	0	0	0	0	0%
E47	-0008	19,347	62.40453	-112.87600	0	0	0	0	0	0	0	0	0	0	0	0	0	0%
E48	-0008 and -0009	27,667	62.41006	-112.86000	0	0	0	0	0	0	0	0	0	0	0	0	0	0%
E54	-0008 and -0009	20,998	62.44120	-112.55900	0	0	0	0	0	0	0	0	0	0	0	0	0	0%
FF59	-0009	28,702	62.35370	-112.75500	0	0	0	0	0	0	0	0	0	0	0	0	0	0%
FF60	-0009	6,329	62.35252	-112.74400	0	0	0	0	0	0	0	0	0	0	0	0	0	0%
FF61	-0008 and -0009	72,183	62.33435	-112.74300	0	0	0	0	0	0	0	0	0	0	0	0	0	0%
FF63	-0008 and -0009	109,135	62.36571	-112.68300	0	0	0	0	0	0	0	0	0	0	0	0	0	0%

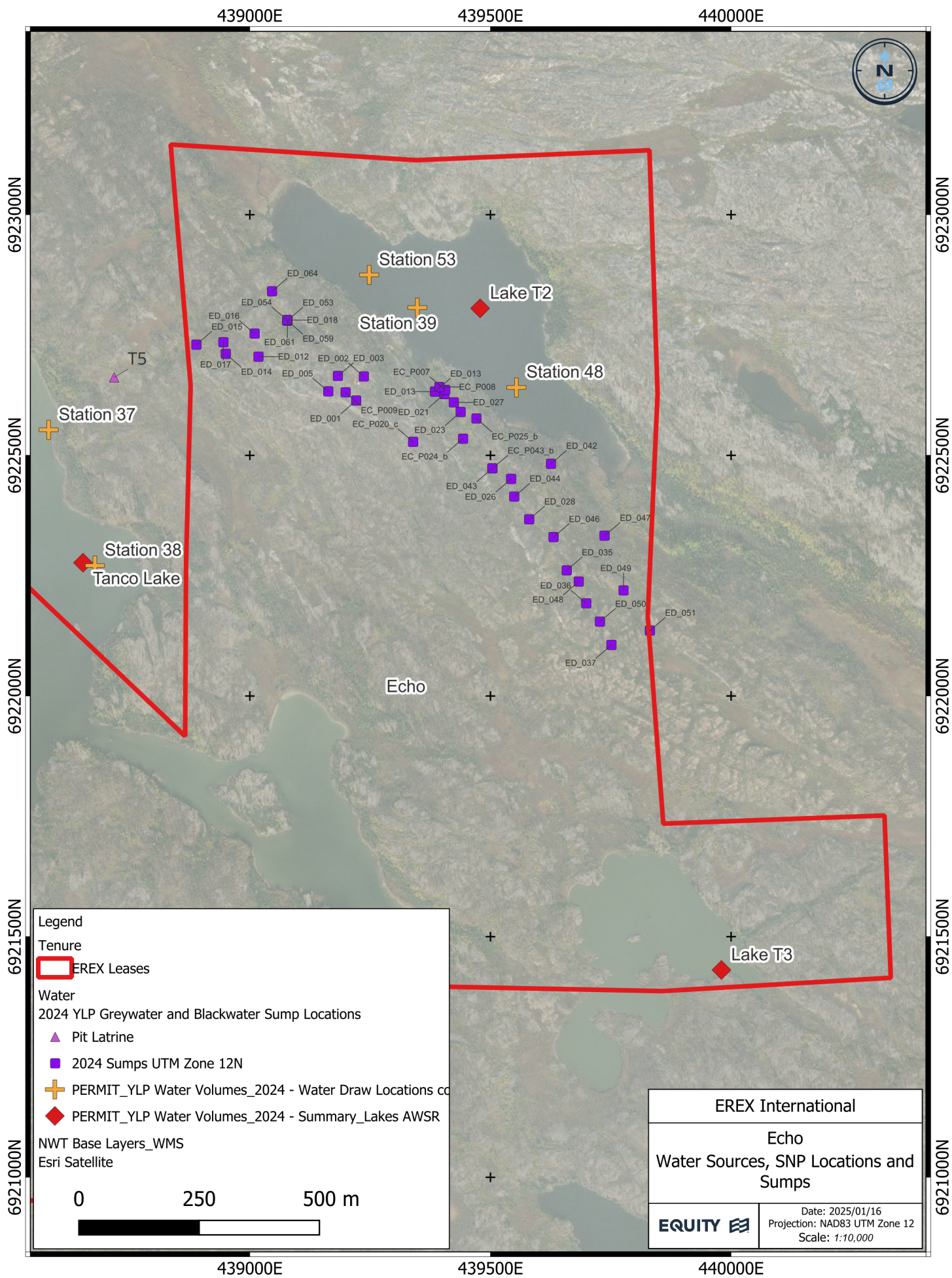
*Water Licence MV2022L8-0008 is Territorial and Water Licence MV2022L8-0009 is Federal

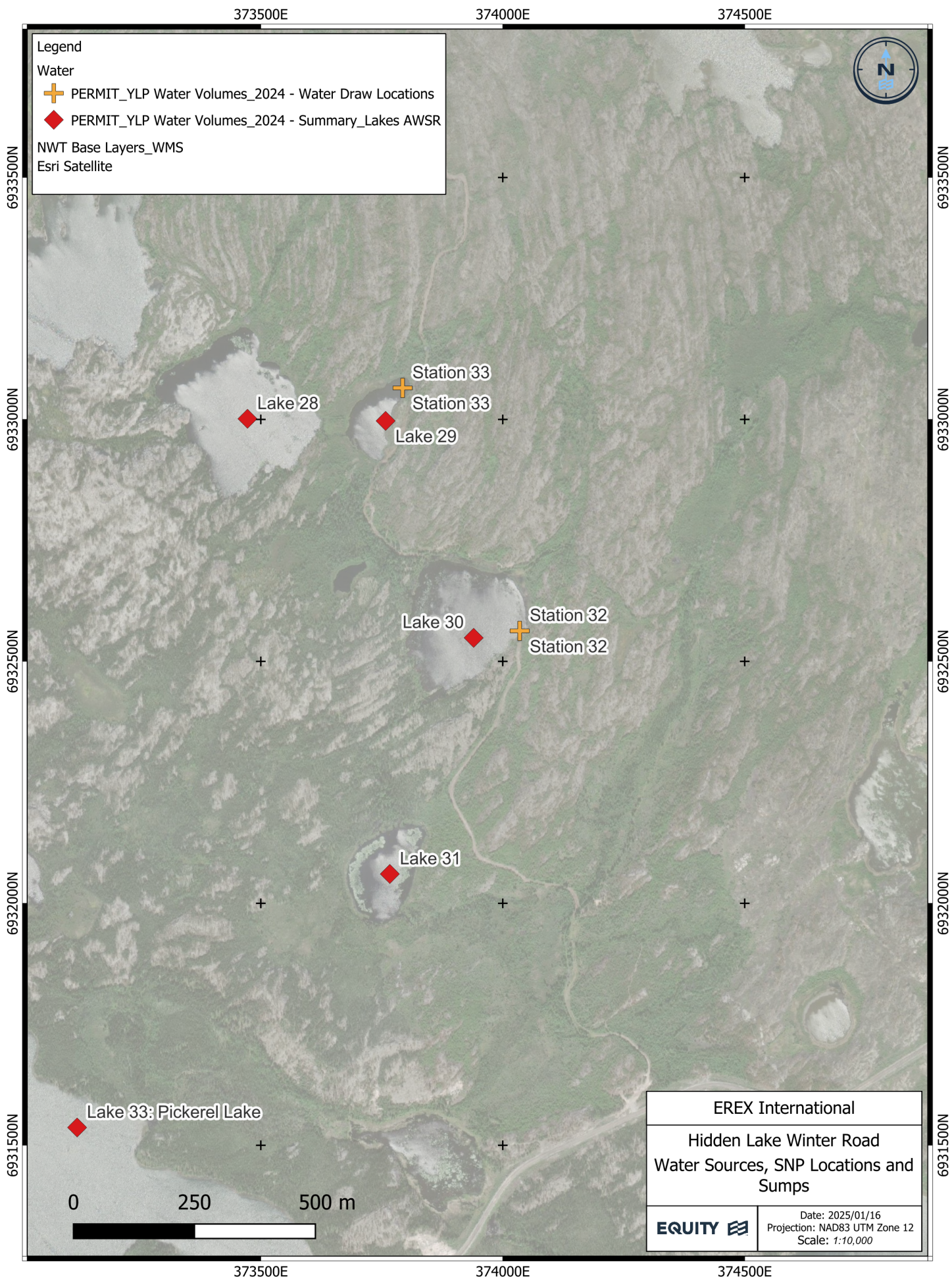
Appendix B. Monthly and Annual Quantities of Drill Waste by Location

		Waste Volume (m3)												
Sump Name	Jurisdiction	Jan	Feb	Mar	April	May	Jun	Jul	Aug	Sept	Oct	Nov	Dec	Annual Total
Fi Centrifuge Dump	Territorial	32.7	88.1	0.0	0.0	0.0	0.0	0.0	0.0	0.0	0.0	0.0	0.0	120.8
FD_011	Territorial	3.6	0.0	0.0	0.0	0.0	0.0	0.0	0.0	0.0	0.0	0.0	0.0	3.6
ED_015	Territorial	1.5	0.0	0.0	0.0	0.0	0.0	0.0	0.0	0.0	0.0	0.0	0.0	1.5
ED_014	Territorial	2.5	0.0	0.0	0.0	0.0	0.0	0.0	0.0	0.0	0.0	0.0	0.0	2.5
ED_012	Territorial	4.4	0.0	0.0	0.0	0.0	0.0	0.0	0.0	0.0	0.0	0.0	0.0	4.4
ED_005	Territorial	3.7	0.0	0.0	0.0	0.0	0.0	0.0	0.0	0.0	0.0	0.0	0.0	3.7
ED_017	Territorial	3.9	0.0	0.0	0.0	0.0	0.0	0.0	0.0	0.0	0.0	0.0	0.0	3.9
FD_019	Territorial	8.4	0.0	0.0	0.0	0.0	0.0	0.0	0.0	0.0	0.0	0.0	0.0	8.4
ED_016	Territorial	3.5	1.8	0.0	0.0	0.0	0.0	0.0	0.0	0.0	0.0	0.0	0.0	5.2
ED_013	Territorial	0.0	12.2	0.0	0.0	0.0	0.0	0.0	0.0	0.0	0.0	0.0	0.0	12.2
ED_001	Territorial	0.0	6.6	0.0	0.0	0.0	0.0	0.0	0.0	0.0	0.0	0.0	0.0	6.6
ED_002	Territorial	0.0	6.0	0.0	0.0	0.0	0.0	0.0	0.0	0.0	0.0	0.0	0.0	6.0
ED_003	Territorial	0.0	5.1	0.0	0.0	0.0	0.0	0.0	0.0	0.0	0.0	0.0	0.0	5.1
EC_P020_c	Territorial	0.0	4.2	0.0	0.0	0.0	0.0	0.0	0.0	0.0	0.0	0.0	0.0	4.2
ED_021	Territorial	0.0	4.6	0.0	0.0	0.0	0.0	0.0	0.0	0.0	0.0	0.0	0.0	4.6
FD_033	Territorial	0.0	4.6	0.0	0.0	0.0	0.0	0.0	0.0	0.0	0.0	0.0	0.0	4.6
ED_023	Territorial	0.0	3.9	0.0	0.0	0.0	0.0	0.0	0.0	0.0	0.0	0.0	0.0	3.9
FD_034	Territorial	0.0	4.9	0.0	0.0	0.0	0.0	0.0	0.0	0.0	0.0	0.0	0.0	4.9
EC_P024_b	Territorial	0.0	2.8	0.0	0.0	0.0	0.0	0.0	0.0	0.0	0.0	0.0	0.0	2.8
EC_P025_b	Territorial	0.0	5.3	0.0	0.0	0.0	0.0	0.0	0.0	0.0	0.0	0.0	0.0	5.3
FD_043	Territorial	0.0	8.9	0.0	0.0	0.0	0.0	0.0	0.0	0.0	0.0	0.0	0.0	8.9
EC_P043_b	Territorial	0.0	1.0	0.0	0.0	0.0	0.0	0.0	0.0	0.0	0.0	0.0	0.0	1.0
ED_045	Territorial	0.0	12.0	0.0	0.0	0.0	0.0	0.0	0.0	0.0	0.0	0.0	0.0	12.0
ED_043	Territorial	0.0	3.1	0.0	0.0	0.0	0.0	0.0	0.0	0.0	0.0	0.0	0.0	3.1
ED_026	Territorial	0.0	3.6	0.0	0.0	0.0	0.0	0.0	0.0	0.0	0.0	0.0	0.0	3.6
ED_036	Territorial	0.0	3.6	0.0	0.0	0.0	0.0	0.0	0.0	0.0	0.0	0.0	0.0	3.6
FD_050	Territorial	0.0	5.3	0.0	0.0	0.0	0.0	0.0	0.0	0.0	0.0	0.0	0.0	5.3
ED_048	Territorial	0.0	6.3	0.0	0.0	0.0	0.0	0.0	0.0	0.0	0.0	0.0	0.0	6.3
ED_042	Territorial	0.0	6.0	0.0	0.0	0.0	0.0	0.0	0.0	0.0	0.0	0.0	0.0	6.0
ED_050	Territorial	0.0	3.6	0.0	0.0	0.0	0.0	0.0	0.0	0.0	0.0	0.0	0.0	3.6
FD_051	Territorial	0.0	9.0	0.0	0.0	0.0	0.0	0.0	0.0	0.0	0.0	0.0	0.0	9.0
BD_B2-B	Territorial	0.0	10.5	15.9	0.0	0.0	0.0	0.0	0.0	0.0	0.0	0.0	0.0	26.4
ED_051	Territorial	0.0	6.4	0.0	0.0	0.0	0.0	0.0	0.0	0.0	0.0	0.0	0.0	6.4
ED_037	Territorial	0.0	2.5	0.0	0.0	0.0	0.0	0.0	0.0	0.0	0.0	0.0	0.0	2.5
ED_044	Territorial	0.0	3.6	0.0	0.0	0.0	0.0	0.0	0.0	0.0	0.0	0.0	0.0	3.6
ED_028	Territorial	0.0	2.8	0.0	0.0	0.0	0.0	0.0	0.0	0.0	0.0	0.0	0.0	2.8
Ki S Centrifuge Dump	Territorial	0.0	7.7	51.4	9.3	0.0	0.0	0.0	0.0	0.0	0.0	0.0	0.0	68.5
FD_053	Territorial	0.0	6.3	0.0	0.0	0.0	0.0	0.0	0.0	0.0	0.0	0.0	0.0	6.3
ED_035	Territorial	0.0	2.7	0.0	0.0	0.0	0.0	0.0	0.0	0.0	0.0	0.0	0.0	2.7
ED_047	Territorial	0.0	2.9	2.9	0.0	0.0	0.0	0.0	0.0	0.0	0.0	0.0	0.0	5.9
FD_054	Territorial	0.0	0.0	5.2	0.0	0.0	0.0	0.0	0.0	0.0	0.0	0.0	0.0	5.2
ED_046	Territorial	0.0	0.0	2.7	0.0	0.0	0.0	0.0	0.0	0.0	0.0	0.0	0.0	2.7
ED_049	Territorial	0.0	0.0	5.8	0.0	0.0	0.0	0.0	0.0	0.0	0.0	0.0	0.0	5.8
EC_P009	Territorial	0.0	0.0	10.5	0.0	0.0	0.0	0.0	0.0	0.0	0.0	0.0	0.0	10.5
ED_027	Territorial	0.0	0.0	8.6	0.0	0.0	0.0	0.0	0.0	0.0	0.0	0.0	0.0	8.6
EC_P007	Territorial	0.0	0.0	5.2	0.0	0.0	0.0	0.0	0.0	0.0	0.0	0.0	0.0	5.2
BE_P026	Territorial	0.0	0.0	5.8	0.0	0.0	0.0	0.0	0.0	0.0	0.0	0.0	0.0	5.8
BE_P028	Territorial	0.0	0.0	3.0	0.0	0.0	0.0	0.0	0.0	0.0	0.0	0.0	0.0	3.0
EC_P008	Territorial	0.0	0.0	10.7	0.0	0.0	0.0	0.0	0.0	0.0	0.0	0.0	0.0	10.7
BE_P011	Territorial	0.0	0.0	5.3	0.0	0.0	0.0	0.0	0.0	0.0	0.0	0.0	0.0	5.3
ED_059	Territorial	0.0	0.0	6.3	0.0	0.0	0.0	0.0	0.0	0.0	0.0	0.0	0.0	6.3
ED_053	Territorial	0.0	0.0	7.0	0.0	0.0	0.0	0.0	0.0	0.0	0.0	0.0	0.0	7.0
ED_054	Territorial	0.0	0.0	7.2	0.0	0.0	0.0	0.0	0.0	0.0	0.0	0.0	0.0	7.2
ED_061	Territorial	0.0	0.0	8.1	0.0	0.0	0.0	0.0	0.0	0.0	0.0	0.0	0.0	8.1
HID_002	Territorial	0.0	0.0	1.4	2.7	0.0	0.0	0.0	0.0	0.0	0.0	0.0	0.0	4.0
ED_018	Territorial	0.0	0.0	0.0	9.5	0.0	0.0	0.0	0.0	0.0	0.0	0.0	0.0	9.5
HD_013	Territorial	0.0	0.0	0.0	7.0	0.0	0.0	0.0	0.0	0.0	0.0	0.0	0.0	7.0
HD_018	Territorial	0.0	0.0	0.0	9.0	0.0	0.0	0.0	0.0	0.0	0.0	0.0	0.0	9.0
ED_064	Territorial	0.0	0.0	0.0	7.7	0.0	0.0	0.0	0.0	0.0	0.0	0.0	0.0	7.7
ND_001	Territorial	0.0	0.0	0.0	4.6	0.0	0.0	0.0	0.0	0.0	0.0	0.0	0.0	4.6
NDW_003	Territorial	0.0	0.0	0.0	3.5	0.0	0.0	0.0	0.0	0.0	0.0	0.0	0.0	3.5
NDW_001	Territorial	0.0	0.0	0.0	3.5	0.0	0.0	0.0	0.0	0.0	0.0	0.0	0.0	3.5
NDW_002	Territorial	0.0	0.0	0.0	3.5	0.0	0.0	0.0	0.0	0.0	0.0	0.0	0.0	3.5

Appendix C. Maps of Water Use and Sump Locations







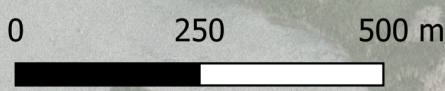
Legend

Water

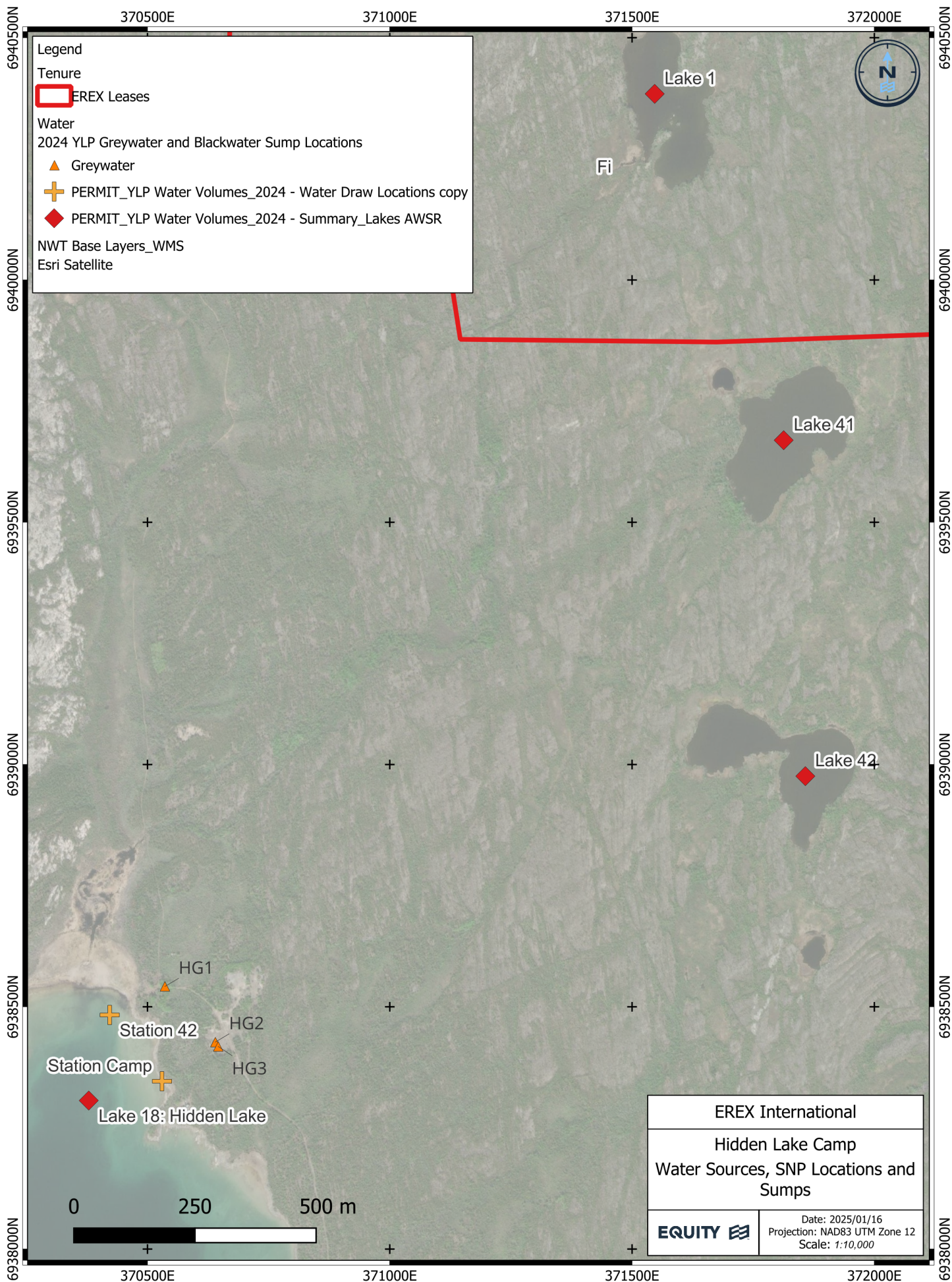
- ✚ PERMIT_YLP Water Volumes_2024 - Water Draw Locations
- ◆ PERMIT_YLP Water Volumes_2024 - Summary_Lakes AWSR

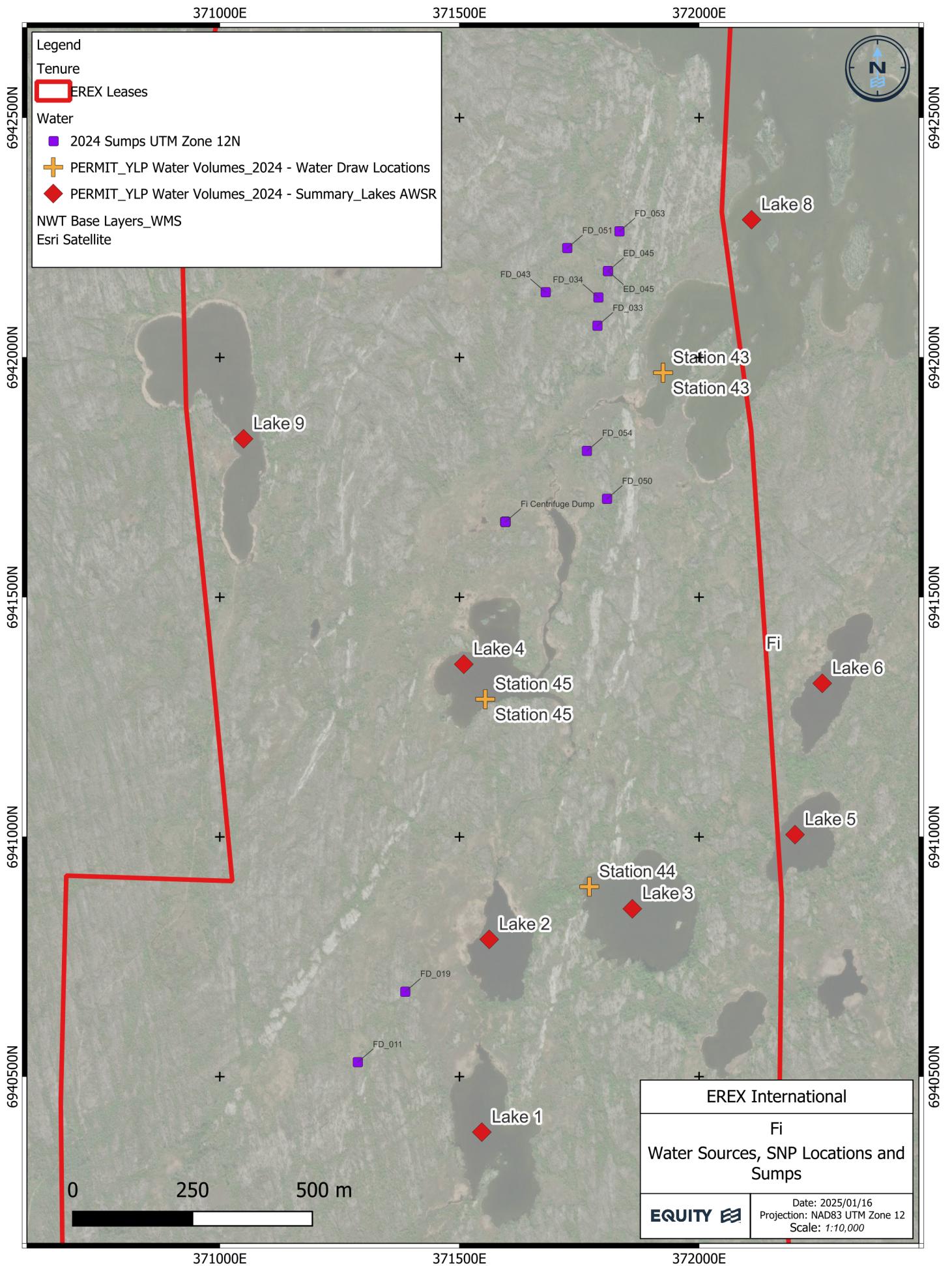
NWT Base Layers_WMS

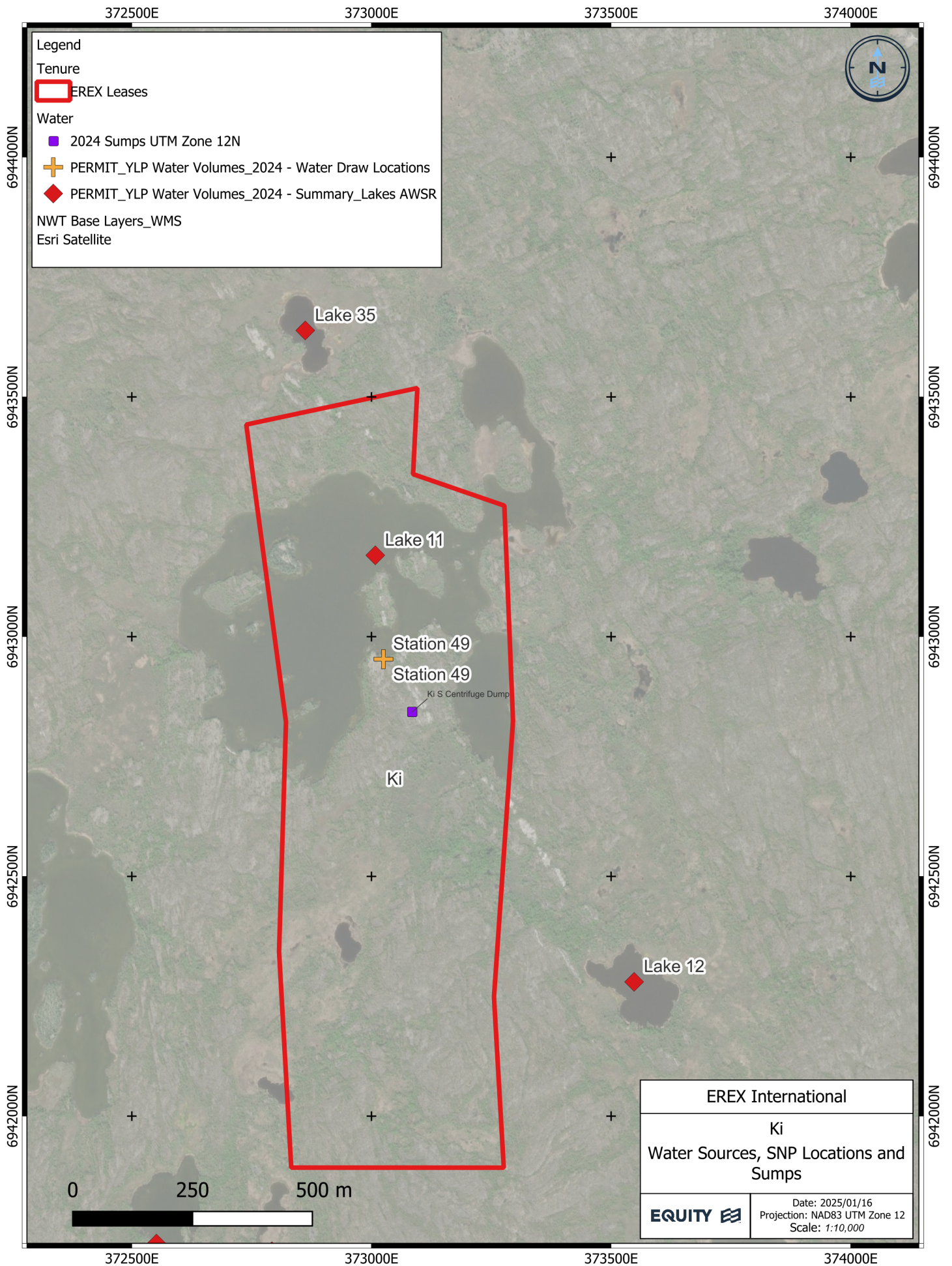
Esri Satellite

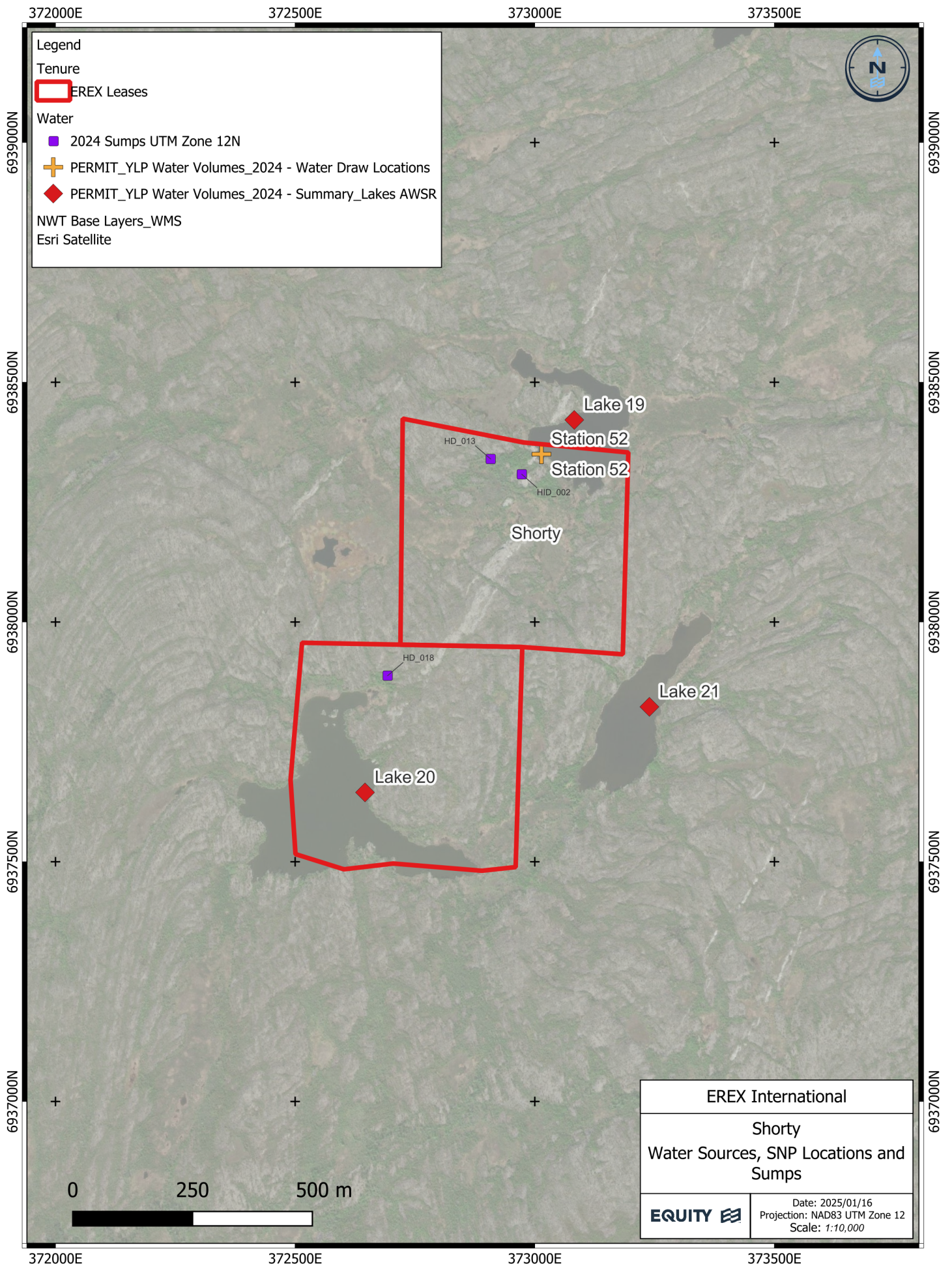


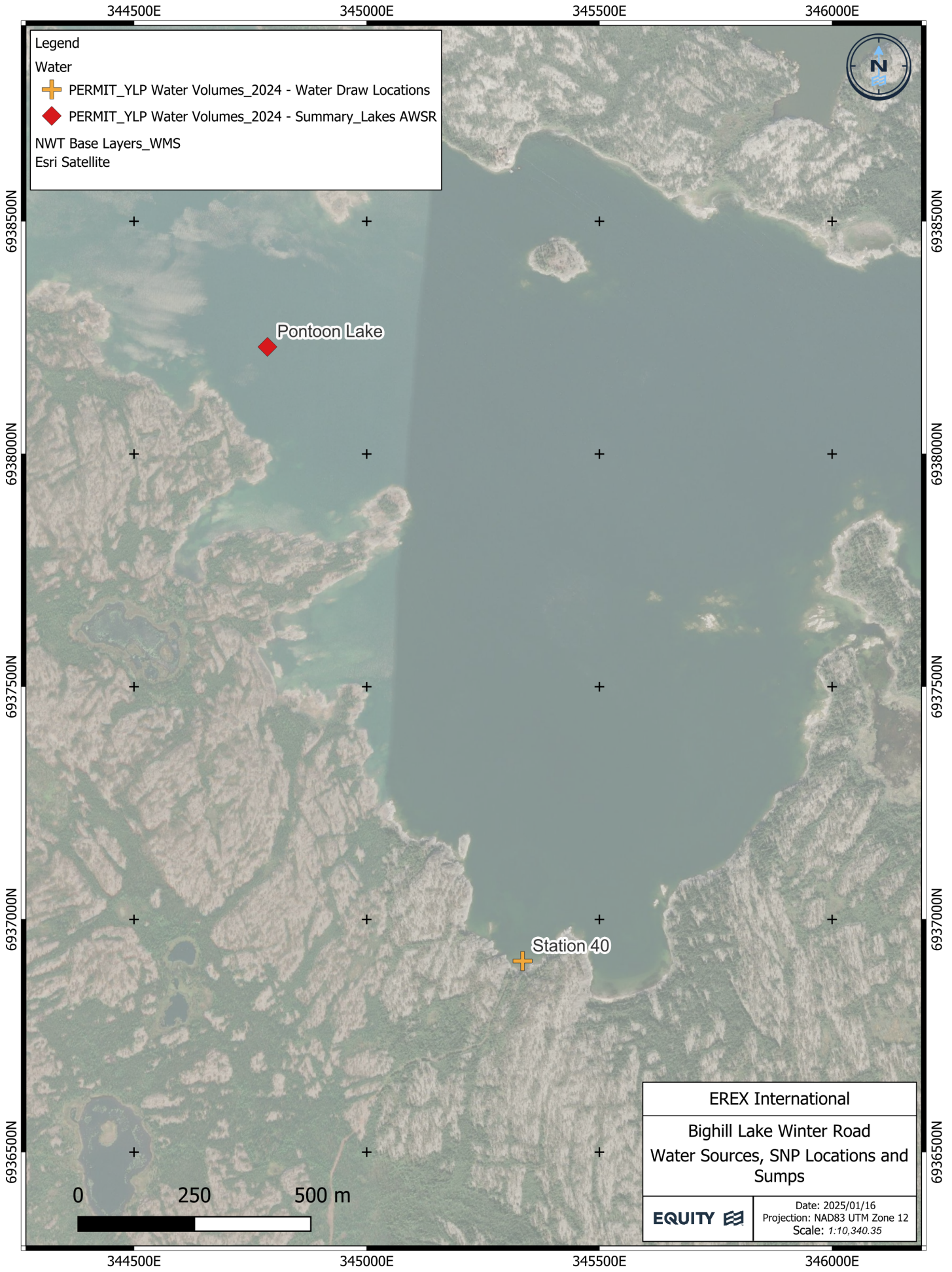
EREX International	
Hidden Lake Winter Road Water Sources, SNP Locations and Sumps	
	Date: 2025/01/16 Projection: NAD83 UTM Zone 12 Scale: 1:10,000











Legend

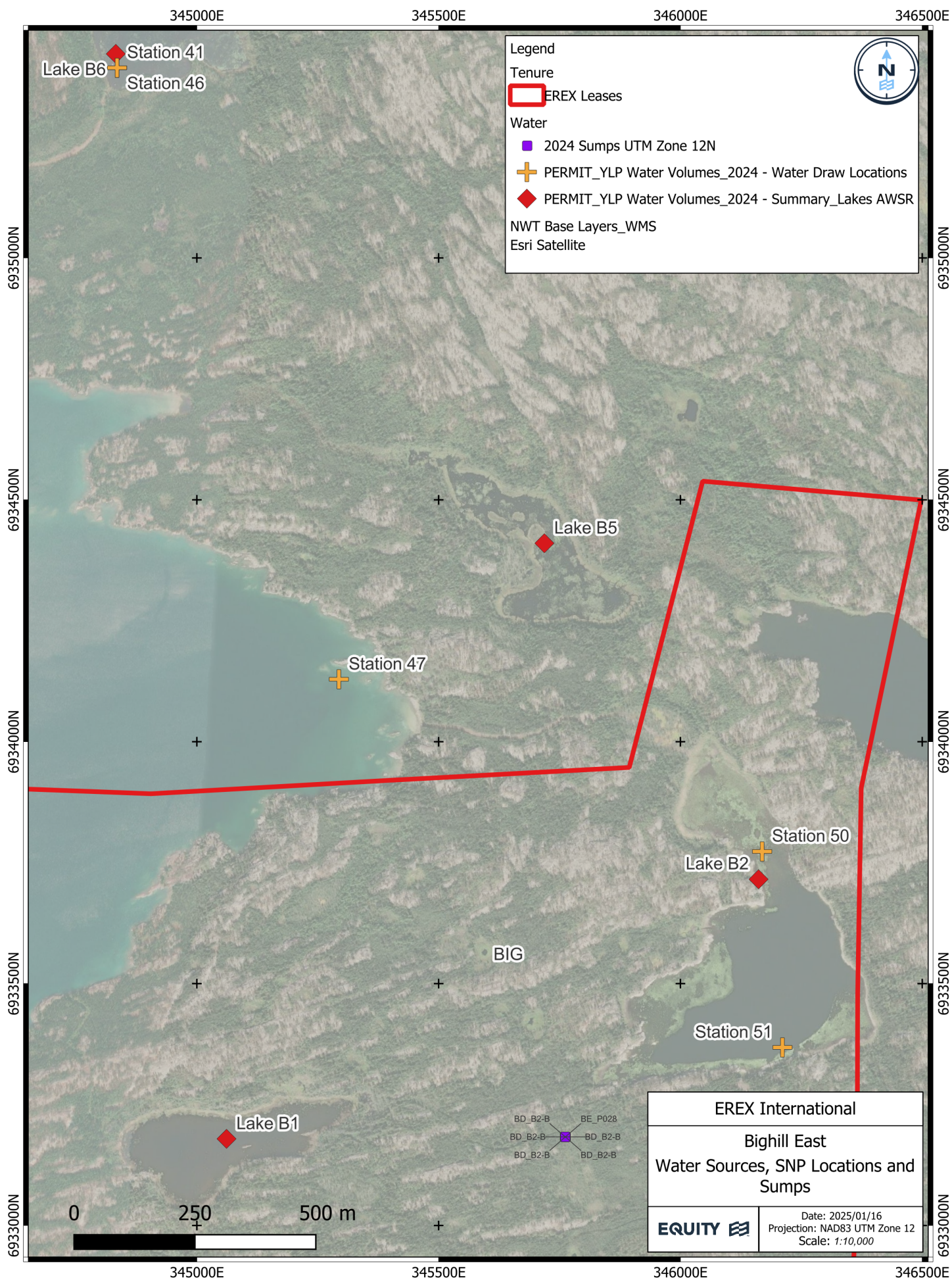
Water

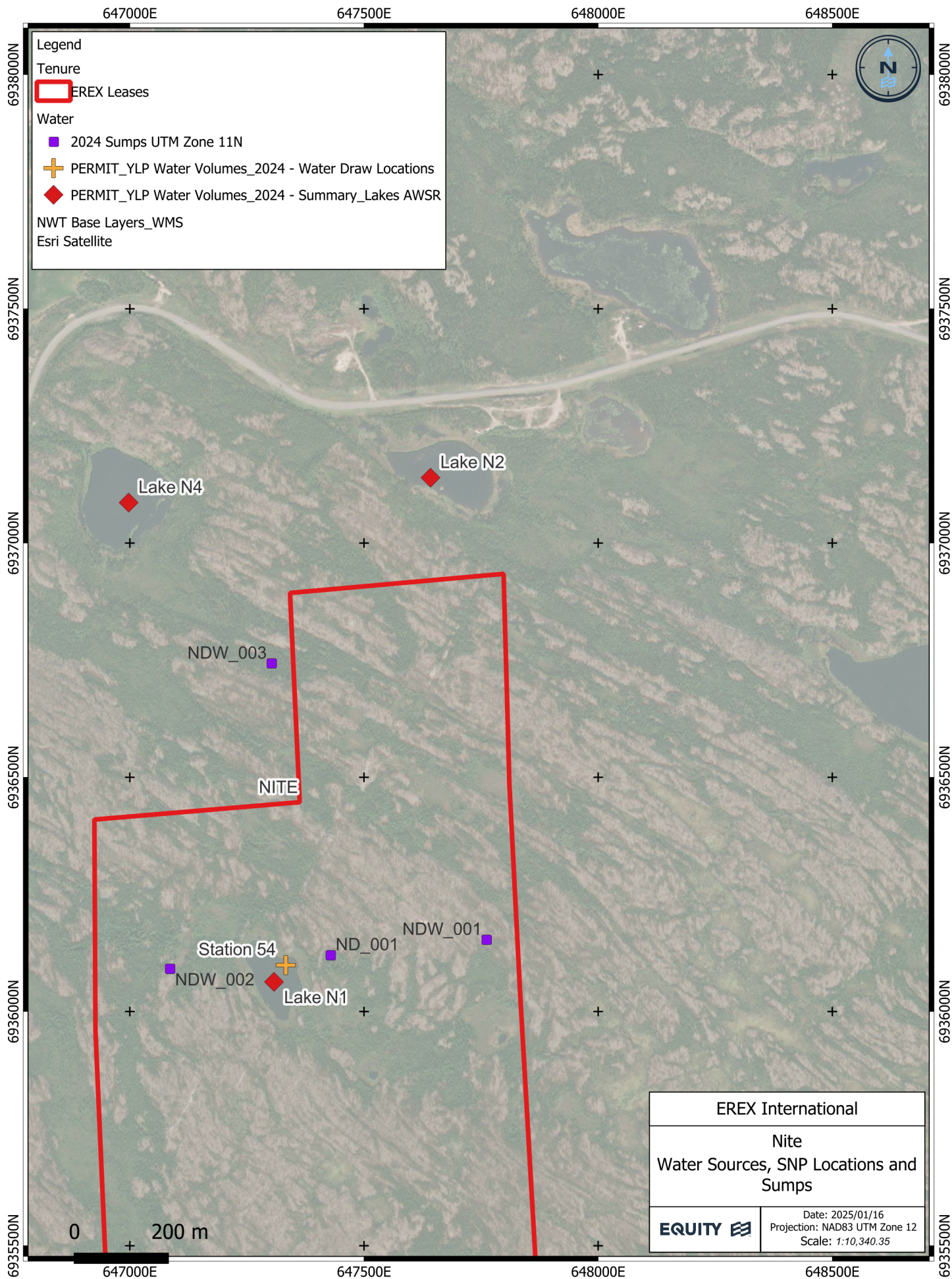
- PERMIT_YLP Water Volumes_2024 - Water Draw Locations
- PERMIT_YLP Water Volumes_2024 - Summary_Lakes AWSR

NWT Base Layers_WMS

Esri Satellite

EREX International	
Bighill Lake Winter Road Water Sources, SNP Locations and Sumps	
EQUITY 	Date: 2025/01/16 Projection: NAD83 UTM Zone 12 Scale: 1:10,340.35





Appendix D. Daily Water Use by Source

Provided in Excel format.