



April 1, 2024

Angela Love

Regulatory Specialist
Mackenzie Valley Land and Water Board
PO Box 2130
Yellowknife, NT, X1A 2P6

RE: Submission of 2023 Annual Water Licence Reports for MV2022L8-0008 and MV2022L8-0009

Ms. Love,

Please find, attached, EREX International Ltd. (EREX)'s 2023 Annual Report for Non-federal Type B Water Licence MV2022L8-0008 and Federal Type B Water Licence MV2022L8-009 for the Yellowknife Lithium Project in accordance with Part B, Condition 19 of the Water Licences.

EREX has reviewed the following Mackenzie Valley Land and Water Board (MVLWB)-approved Management Plans in accordance with Part B, Condition 9 of the Water Licences and concluded that no revisions are required at this time:

- Engagement Plan (Version 2.0)
- Spill Contingency Plan (Version 3.0)
- Waste Management Plan (Version 3.0)
- Closure and Reclamation Plan (Version 2.1)

EREX, and its parent company Li-FT Power Ltd., appreciates the collaborative and ongoing dialogue with interested and potentially affected parties, regulatory stakeholders, and MVLWB staff. Please do not hesitate to reach out to me should you have any questions or require any additional information.

Sincerely,

April Hayward, Ph.D., MBA (Finance)
Chief Sustainability Officer
Li-FT Power Ltd.
Cell +1 (867) 686-8375
email: april@li-ft.com



**2023 Annual Report for
Water Licences MV2022L8-0008
and
MV2022L8-0009**

**Yellowknife Lithium Project, NT
North Slave Region, NT**

March 31, 2024

**Prepared by
RainCoast Environmental Services Ltd.
and
Equity Exploration
for
EREX International Ltd.
1218-1030 West Georgia St.
Vancouver, BC, V6E 3M5**

Table of Contents

1	Introduction	4
a)	Brief Summary of Project Activities	4
b)	Updated Project Schedule	5
c)	Monthly and Annual Quantities of Fresh Water Obtained from All Sources (per Part B, Condition 18 of the Licences).....	5
d)	Calibration and status of water meters and Devices (per Part B, Condition 18 of the Licences)....	5
e)	Summary of Activities Conducted in accordance with the Approved Engagement Plan (per Part B, Condition 20 of the Licences)	5
f)	Traditional Knowledge.....	5
g)	Major Maintenance Activities	5
h)	Summary of Activities Conducted in accordance with the Approved Waste Management Plan ...	6
i.	Facilities and Processes Upgrades or Changes.....	6
ii.	Monthly and Annual Drill Waste Discharge by Location	6
iii.	Monthly and Annual Sewage Discharge by Location	6
iv.	Map depicting the location of the Sumps	7
i)	Summary of Activities Conducted in accordance with the Approved Explosives Management Plan	7
i.	Approved Facilities and Processes Upgrades or Changes	7
ii.	Monthly and annual quantities/volumes by location of explosives.....	7
iii.	Monitoring Results.....	7
iv.	Action Level exceedances	7
v.	Actions taken in response to any Action level exceedances	7
j)	Summary of Activities Conducted in accordance with the Approved Spill Contingency Plan.....	7
i.	Unauthorized Discharges Log	7
ii.	Spill Training	7
	All employees and contractors received instruction in safe fuel handling, spill response, and spill reporting as part of the site induction in accordance with the MVLWB-approved Spill Contingency Plan.	7
k)	Summary of Activities Conducted in accordance with the Approved Closure and Reclamation Plan (per Part I, Condition 1 of the Licences)	8
i.	Details of any Progressive Reclamation undertaken.....	8
ii.	A discussion on whether planning and implementation remains on schedule, and a summary of any new scheduling setbacks	8

iii.	A summary of engagement conducted regarding Closure and Reclamation	8
iv.	A list of any factors that would increase or decrease the Closure Cost Estimate the next time the Estimate is updated.....	8
l)	Tabular summaries of all data and information generated under the SNP annexed to this Licence, in Excel format	8
m)	Summary and interpretation of the results from the geochemical characterization and a discussion on the Potential for acid rock drainage and metal leaching	9
n)	List of any non-compliance(s) with the conditions of this Licence or any directive from the Board pursuant to the conditions of this Licence.....	9
o)	A summary of actions taken to address concerns, non-conformances, or deficiencies in any reports filed by an Inspector	9
p)	Any Other Details requested by the Board by November 30 th of the Year Being Reported	9

Tables

Table 1: Monthly and Annual Greywater Volumes Discharged by Location	6
Table 2: Echo Area Camp Pit Latrine Sump Locations and Volumes Discharged	7

1 Introduction

Li-FT Power Ltd. (Li-FT) is a Canadian critical minerals exploration company focused on identifying and defining potential lithium resources in Canada. Li-FT is based in Vancouver, British Columbia and is publicly traded on the TSXV (LIFT), OTCQX (LIFF), and FRA (WSO). Li-FT has assets in Quebec and the Northwest Territories (NT). In the NT, Li-FT's assets are held by its wholly-owned subsidiary, EREX International Ltd. (EREX or the Company) and include the Yellowknife Lithium Project in the North Slave Region and the CALI Project in the Dehcho Region. The Yellowknife Lithium Project (the Project) is the subject of this report.

The Project includes two exploration camps: Hidden Lake Camp, which is located on Federal Land and supports exploration in the Hidden Lake area, and Echo Area Camp, which is located on Non-Federal land and supports exploration in the Echo area. Exploration on the Big and Nite leases is generally supported out of Yellowknife. Smaller, temporary exploration camps may also be established in the future, upon Inspector approval, to support exploration activity. Exploration activities may include diamond and reverse circulation drilling, channel sampling, and trenching near pegmatite dykes. Exploration activities may also be supported with winter roads and trails.

This Annual Report is being filed with the Mackenzie Valley Land and Water Board (MVLWB) in accordance with Part B, Condition 19 of both Water Licence MV2022L8-0008 (for Non-Federal areas) and Water Licence MV2022L8-0009 (for Federal areas) and summarizes activities and monitoring undertaken at the Company's Yellowknife Lithium Project in calendar year 2023. For ease of comparison, each subheading of this report has been directly aligned with the reporting requirements outlined in Schedule 1 of MV2022L8-0008 and MV2022L8-0009 (the Licences), which are identical.

a) Brief Summary of Project Activities

In 2023, EREX undertook exploration work to evaluate the presence and quality of lithium-bearing minerals, predominantly spodumene, in the pegmatite dykes that occur on leases held by EREX. Mapping, prospecting, and surface sampling was conducted in the summer of 2023. 198 holes were drilled on EREX's leases in 2023. Water for drilling was pumped from approved sources in proximity to the drill holes. Drill cuttings were placed in natural depressions in accordance with EREX's Waste Management Plan. Saw-cut channel sampling using gas powered saws was also conducted on outcropping exposures of the pegmatite dykes. Construction of the Thompson-Lundmark winter road began in late 2023.

The Hidden Lake Camp was established in 2023 to serve drill crews, geologists and associated technicians, and environmental scientists conducting exploration and environmental baseline studies in the area. Access to the Hidden Lake Camp during summer occurred via helicopter or float equipped fixed wing aircraft. Waste products generated by the Hidden Lake Camp and associated activities were managed according to EREX's Waste Management Plan.

The Echo Area Camp was established in 2023 to serve drill crews, geologists and associated technicians, and environmental scientists conducting exploration and environmental baseline studies in the area. Access to the Echo area was occurred via helicopter or float equipped fixed wing aircraft. Waste generated at the Echo Area Camp and associated activities were managed according to EREX's Waste Management Plan.

b) Updated Project Schedule

Exploration activities aimed at defining the extent and quality of potential lithium resources will continue seasonally and as needed through the term of this Licence throughout the Project area.

c) Monthly and Annual Quantities of Fresh Water Obtained from All Sources (per Part B, Condition 18 of the Licences)

All water uses by month, year, and water source are outlined in Appendix A. Daily water usage can be found in the Monthly Surveillance Network Program (SNP) reports filed on the MVLWB public registry at <https://mvlwb.com/registry/mv2022l8-0009> and are discussed in Section L of this report. No exceedances of daily water allotments or annual lake-specific water usage allotments occurred in 2023.

d) Calibration and status of water meters and Devices (per Part B, Condition 18 of the Licences)

Water use to the drill units was measured by GPI 01N31GM flow meters. GPI 01N31GM are factory calibrated for water with no user adjustment or calibration available. Where flow meters could not practically be installed inline with the pump due to freezing conditions, water volumes were calculated using full tank fills (e.g., on water trucks) or by multiplying the maximum pump flow rate by the recorded time of pump use.

e) Summary of Activities Conducted in accordance with the Approved Engagement Plan (per Part B, Condition 20 of the Licences)

EREX communicated with interested and potentially affected parties regarding its activities via text, phone, and email throughout 2023. EREX sent pre-application information to interested and potentially affected parties by email. EREX held a number of virtual and in-person meetings to inform interested and potentially affected parties of its plans and solicit feedback. EREX also held an open house in Yellowknife in the autumn of 2023 in an effort to reach members of the public at large and provide an opportunity for them to provide feedback on the Project and EREX's plans for its winter exploration program.

f) Traditional Knowledge

EREX conducted archaeological studies, including Archaeological Overview Assessments and Archaeological Impact Assessments (AIA), in accordance with Conditions 56 and 57 Land Use Permit MV2022C0021 in 2023. Elders from a number of Indigenous communities joined the technical team on the ground for the AIAs. Exploration activities were adjusted based on the outcome of the studies, including Traditional Knowledge provided during the surveys. EREX also hosted an elders mapping session with members of the Yellowknives Dene First Nation on February 9th, 2023.

g) Major Maintenance Activities

No major maintenance activities were conducted in 2023. The Hidden Lake and Echo camps were constructed in 2023. Construction of the Thompson-Lundmark winter road began in late 2023.

h) Summary of Activities Conducted in accordance with the Approved Waste Management Plan

i. Facilities and Processes Upgrades or Changes

Waste management facilities were constructed at the Hidden Lake and Echo Area camps in 2023 in accordance with the MVLWB-approved management plans and Project Descriptions submitted to the MVWLB previously. No other upgrades or changes to waste management facilities were made in 2023.

ii. Monthly and Annual Drill Waste Discharge by Location

Drilling waste was pumped from the drill to authorized natural depressions in accordance with the Waste Management Plan. The locations and volumes of drilling waste placement are provided by month in Appendix B.

iii. Monthly and Annual Sewage Discharge by Location

Hidden Lake Camp

All sewage was incinerated in Incinolet toilets and transferred off site to an approved waste management facility in Yellowknife, in accordance with the Waste Management Plan. Monthly and annual greywater discharged by sump location is provided in Table 3.

Table 1: Monthly and Annual Greywater Volumes Discharged by Location

Sump ID	EG1	EG2	HG1	HG2	HG3
UTM Zone	12N	12N	12N	12N	12N
UTM E	436334	436334	370536	370640	370646
UTM N	6922915	6922912	6938542	6938427	6938418
Sump Type	Greywater	Greywater	Greywater	Greywater	Greywater
Jurisdiction	Territorial	Territorial	Federal	Federal	Federal
Jun Vol. (m3)	0	0	0.33	1.32	4.97
Jul Vol. (m3)	0	0	4.53	18.1	67.88
Aug Vol. (m3)	0	0	1.81	7.23	27.11
Sept Vol. (m3)	0.7	0.3	3.44	13.74	51.53
Oct Vol. (m3)	0.7	0.3	2.73	10.92	40.95
Nov Vol. (m3)	2.1	0.9	0.07	0.26	0.98
Dec Vol. (m3)	2.1	0.9	0.04	0.14	0.53
Annual Total Vol. (m3)	5.6	2.4	12.93	51.72	193.94

Echo Area Camp

Blackwater was collected in pit latrines located on non-Federal Land at least 100 m from the Ordinary Highwater Mark of the nearest watercourse unless otherwise authorized by an Inspector. Blackwater sumps were approximately 2 metres long, 0.5 metres wide, and 1.5 metres deep. Blackwater sumps were treated with lime on an as-needed basis.

Table 2: Echo Area Camp Pit Latrine Sump Locations and Volumes Discharged

Sump Name	UTM Zone	UTM Easting	UTM Northing	Waste Type	Waste Volume (m3)	Date of Use	Date of Closure
T1	12N	436373	6922948	Sewage	<1.5	09/20/2023	N/A
T2	12N	436310	6922928	Sewage	<1.5	09/20/2023	N/A
T3	12N	436365	6922958	Sewage	<1.5	09/20/2023	N/A
T4	12N	436308	6922937	Sewage	<1.5	09/20/2023	N/A
T5	12N	438718	6922662	Sewage	0	N/A	N/A

iv. Map depicting the location of the Sumps

All sump locations are depicted in the Figures presented in Appendix C.

i) Summary of Activities Conducted in accordance with the Approved Explosives Management Plan

No explosives have been required for the Project to date. As such, no Explosives Management Plan has been developed for the Project.

i. Approved Facilities and Processes Upgrades or Changes

Not applicable.

ii. Monthly and annual quantities/volumes by location of explosives

Not applicable.

iii. Monitoring Results

Not applicable.

iv. Action Level exceedances

Not applicable.

v. Actions taken in response to any Action level exceedances

Not applicable.

j) Summary of Activities Conducted in accordance with the Approved Spill Contingency Plan

i. Unauthorized Discharges Log

No spills meeting NT/NU reporting thresholds occurred under this Licence in 2023.

ii. Spill Training

All employees and contractors received instruction in safe fuel handling, spill response, and spill reporting as part of the site induction in accordance with the MVLWB-approved Spill Contingency Plan.

k) Summary of Activities Conducted in accordance with the Approved Closure and Reclamation Plan (per Part I, Condition 1 of the Licences)

Version 2.0 of Closure and Reclamation Plan and associated Security Estimate was provided to the MVLWB with the applications to amend MV2022C0021, MV2022L8-0008, MV2022L8-0009.

No activities related to closure and reclamation were undertaken in 2023, with the exception of progressive reclamation of each drill site.

i. Details of any Progressive Reclamation undertaken

All 198 drill sites that were used in 2023 have been reclaimed in accordance with Conditions 81 and 82 of the Land Use Permit and the MVLWB-approved Closure and Reclamation Plan. In the October 13, 2023 Environmental Inspection Report conducted for Land Use Permit MV2022C0021,¹ the Inspector reported “...progressive reclamation of all completed drill sites is occurring and the Permittee/Contractors cooperation to comply with Condition #81 (Natural Vegetation) & #82 (Progressive Reclamation) of the land use permit is appreciated.”

ii. A discussion on whether planning and implementation remains on schedule, and a summary of any new scheduling setbacks

Project planning and implementation remains on schedule with exploration activities planned to continue as needed over the duration of the terms of these exploration water licences.

iii. A summary of engagement conducted regarding Closure and Reclamation

Engagement related to the updated Closure and Reclamation Plan, and the Project as a whole, was outlined in an update to the Engagement Record submitted with the Engagement Plan submitted with the applications amend MV2022C0021, MV2022L8-0008, MV2022L8-0009 in the spring and autumn of 2023.

iv. A list of any factors that would increase or decrease the Closure Cost Estimate the next time the Estimate is updated

The closure cost estimate for MV2022C0021, MV2022L8-0008, and MV2022L8-0009 was most recently updated during the MVLWB-administered process to amend MV2022C0021, MV2022L8-0008, and MV2022L8-0009 and was approved by the MVLWB on December 12, 2023. No factors that would further increase or decrease these estimates have been identified.

l) Tabular summaries of all data and information generated under the SNP annexed to this Licence, in Excel format

Only SNP Station 1 was active in 2023, and relates to daily monitoring of water volumes used. This information has been provided in Excel format, as Appendix D of this report. Monthly SNP Reports were also filed with the MVLWB for this period and are available on the public registry.

¹ <https://registry.mvlwb.ca/Documents/MV2022C0021/EREX%20-%20Inspection%20Report%20-%20October%2013,%202023%20-%20Oct%2013%2023.pdf>

There were no exceedances of either the daily water use limits for the Licences (299 m³/day, combined) or of the source-specific annual water use limits in 2023.

m) Summary and interpretation of the results from the geochemical characterization and a discussion on the Potential for acid rock drainage and metal leaching

No geochemical characterizations were undertaken in 2023.

n) List of any non-compliance(s) with the conditions of this Licence or any directive from the Board pursuant to the conditions of this Licence

There were no instances of non-compliance with the Water Licences. At the end of 2023, the only outstanding directive from the MVLWB was to update the Closure and Reclamation Plan (Version 2.1) for a conformity check by January 15th, 2024.

o) A summary of actions taken to address concerns, non-conformances, or deficiencies in any reports filed by an Inspector

No substantive concerns, non-conformances, or deficiencies were noted during any of the Inspections that took place in 2023. Minor items noted by the Inspectors at the time of the Inspection were addressed as quickly as possible to the Inspectors' satisfaction and no future actions were required.

p) Any Other Details requested by the Board by November 30th of the Year Being Reported

No other requests that required further reporting were made by the MVLWB prior to November 30, 2023.

Appendix A. Monthly and Annual Quantities of Freshwater Used by Source

Monthly and Annual Freshwater Use by Source, 2023

Source ID	Water Licence # MV2022L8-0008 or 0009*	Allowance (m3)	Lat.	Long.	Jan Vol. (m3)	Feb Vol. (m3)	Mar Vol. (m3)	Apr Vol. (m3)	May Vol. (m3)	Jun Vol. (m3)	Jul Vol. (m3)	Aug Vol. (m3)	Sept Vol. (m3)	Oct Vol. (m3)	Nov Vol. (m3)	Dec Vol. (m3)	Annual Total Vol. (m3)	Used
Lake 1	-0008	3,721	62.57193	-113.4999	0	0	0	0	0	382	435	0	0	0	0	0	816	22%
Lake 2	-0008	2,286	62.57554	-113.4999	0	0	0	0	0	242	848	210	296	88	0	0	1,684	74%
Lake 3	-0008	4,140	62.57622	-113.49414	0	0	0	0	0	0	0	0	0	0	0	0	0	0%
Lake 4	-0008	2,988	62.58067	-113.50136	0	0	0	0	0	714	0	0	131	69	0	0	915	31%
Lake 5	-0008	1,828	62.57772	-113.48766	0	0	0	0	0	0	0	0	0	0	0	0	0	0%
Lake 6	-0008	1,968	62.58057	-113.48679	0	0	0	0	0	0	0	0	0	0	0	0	0	0%
Lake 7	-0008	2,807	62.58438	-113.48138	0	0	0	0	0	0	0	0	0	0	0	0	0	0%
Lake 8	-0008	33,770	62.58919	-113.49039	0	0	0	0	0	496	51	0	0	15	0	0	562	2%
Lake 9	-0008	7,284	62.58472	-113.51066	0	0	0	0	0	0	0	0	0	0	0	0	0	0%
Lake 10	-0008	13,900	62.59269	-113.51312	0	0	0	0	0	0	0	0	0	35	0	0	35	0%
Lake 11	-0008 and -0009	29,110	62.59741	-113.47357	0	0	0	0	0	0	108	187	25	328	0	0	647	2%
Lake 12	-0008	1,868	62.58962	-113.4624	0	0	0	0	0	0	0	0	0	0	0	0	0	0%
Lake 13	-0008	11,603	62.59935	-113.49932	0	0	0	0	0	0	0	0	0	29	0	0	29	0%
Lake 14	-0008	1,552	62.58432	-113.47668	0	0	0	0	0	0	0	0	0	0	0	0	0	0%
Lake 15	-0008	25,500	62.58151	-113.45731	0	0	0	0	0	0	0	0	0	0	0	0	0	0%
Lake 16	-0008	14,090	62.57363	-113.4653	0	0	0	0	0	0	0	0	0	0	0	0	0	0%
Lake 17	-0008	5,974	62.56948	-113.46444	0	0	0	0	0	0	0	0	0	0	0	0	0	0%
Lake 18: Hidden Lake	-0008 and -0009	2,036,000	62.55289	-113.52102	0	0	0	0	0	7	91	85	69	55	1	584	891	0%
Lake 19	-0008	3,369	62.55486	-113.46858	0	0	0	0	0	0	310	247	231	0	0	0	788	23%
Lake 20	-0008	7,599	62.54774	-113.47649	0	0	0	0	0	0	172	0	27	0	0	0	198	3%
Lake 21	-0008	3,336	62.54955	-113.46509	0	0	0	0	0	0	0	0	0	0	0	0	0	0%
Lake 22	-0008	4,691	62.54418	-113.4929	0	0	0	0	0	0	0	0	0	0	0	0	0	0%
Lake 23	-0008	6,440	62.53851	-113.48622	0	0	0	0	0	0	0	0	0	0	0	0	0	0%
Lake 24	-0008	8,122	62.53634	-113.47803	0	0	0	0	0	0	0	0	0	0	0	0	0	0%
Lake 25	-0008	5,243	62.53196	-113.48403	0	0	0	0	0	0	0	0	0	0	0	0	0	0%
Lake 26	-0008	16,190	62.52339	-113.47842	0	0	0	0	0	0	0	0	0	0	0	0	0	0%
Lake 27	-0008	46,700	62.51248	-113.47014	0	0	0	0	0	0	0	0	0	0	0	0	0	0%
Lake 28	-0008	6,348	62.50639	-113.457	0	0	0	0	0	0	0	0	0	0	0	0	0	0%
Lake 29	-0008	1,091	62.50645	-113.45146	0	0	0	0	0	0	0	0	0	0	0	754	754	69%
Lake 30	-0008	4,495	62.50249	-113.4476	0	0	0	0	0	0	0	0	0	0	0	116	116	3%
Lake 31	-0008	250	62.49805	-113.4506	0	0	0	0	0	0	0	0	0	0	0	0	0	0%
Lake 32	-0008	45,930	62.48918	-113.42671	0	0	0	0	0	0	0	0	0	0	0	0	0	0%
Lake 33: Pickerel Lake	-0008 and -0009	156,530	62.49313	-113.46274	0	0	0	0	0	0	0	0	0	0	0	0	0	0%
Lake 34: Reid Lake	-0008 and -0009	617,300	62.46879	-113.40441	0	0	0	0	0	0	0	0	0	0	0	74	74	0%
Lake 35	-0009	905	62.60151	-113.46776	0	0	0	0	0	0	0	0	0	0	0	0	0	0%
Lake 36	-0009	553	62.60386	-113.48117	0	0	0	0	0	0	0	0	0	0	0	0	0	0%
Lake 37	-0009	1,935	62.60601	-113.4755	0	0	0	0	0	0	0	0	0	0	0	0	0	0%
Lake 38	-0009	1,574	62.61018	-113.47454	0	0	0	0	0	0	0	0	0	0	0	0	0	0%
Lake N1	-0008	1,329	62.52616	-114.1374	0	0	0	0	0	0	0	0	65	604	95	0	765	58%
Lake N2	-0008	3,119	62.53568	-114.12999	0	0	0	0	0	0	0	0	0	0	0	0	0	0%
Lake N3	-0008	7,424	62.53036	-114.10826	0	0	0	0	0	0	0	0	0	0	0	0	0	0%
Lake N4	-0008	2,349	62.53546	-114.14255	0	0	0	0	0	0	0	0	0	0	0	0	0	0%
Lake N5	-0008	14,940	62.52589	-114.15993	0	0	0	0	0	0	0	0	0	0	0	0	0	0%
Lake N6	-0008	48,640	62.51377	-114.14471	0	0	0	0	0	0	0	0	0	0	0	0	0	0%
Pontoon Lake	-0008	324,100	62.54236	-114.01794	0	0	0	0	0	0	0	0	0	0	0	0	0	0%
Bighill Lake	-0008	448,260	62.51001	-114.03583	0	0	0	0	0	0	0	0	186	693	0	0	880	0%

Egg Lake	-0008	87,176	62,48975	-114,02921	0	0	0	0	0	0	0	0	0	0	0	0	0	0%
Lake B1	-0008	5,345	62,4972	-114,00804	0	0	0	0	0	0	0	0	197	367	0	0	565	11%
Lake B2	-0008	15,888	62,50246	-113,9872	0	0	0	0	0	0	1,042	861	192	0	0	0	2,094	13%
Lake B3	-0008	40,960	62,48954	-113,99044	0	0	0	0	0	0	0	0	0	0	0	0	0	0%
Lake B4	-0008	36,480	62,50521	-113,97157	0	0	0	0	0	0	0	0	186	0	0	0	186	1%
Lake B5	-0008	4,477	62,50851	-113,99641	0	0	0	0	0	0	0	0	0	0	0	0	0	0%
Lake B6	-0008	27,730	62,52	-114,01519	0	0	0	0	0	0	0	0	0	0	0	0	0	0%
Tanco Lake	-0008	422,700	62,42667	-112,18794	0	0	0	0	0	0	0	0	1	6	4	644	655	0%
Lake T2	-0008	15,970	62,43155	-112,17215	0	0	0	0	0	0	0	105	150	0	0	0	255	2%
Lake T3	-0008	92,494	62,41929	-112,16196	0	0	0	0	0	0	0	0	0	0	0	0	0	0%
Thompson Lake	-0008 and -0009	274,700	62,61396	-113,49957	0	0	0	0	0	0	0	0	0	0	0	0	0	0%
Lake 39	-0008	5,123	62,60376	-113,49999	0	0	0	0	0	0	0	0	0	0	0	0	0	0%
Lake 40	-0009	2,139	62,60965	-113,46189	0	0	0	0	0	0	0	0	0	0	0	0	0	0%
Lake 41	-0008	4,835	62,56561	-113,49419	0	0	0	0	0	0	0	0	0	0	0	0	0	0%
Lake 42	-0008	4,122	62,55941	-113,4928	0	0	0	0	0	0	0	0	0	0	0	0	0	0%
Lake 43	-0008	7,872	62,51343	113,4381506	0	0	0	0	0	0	0	0	0	0	0	0	0	0%
Lake 44	-0008	7,095	62,48886	113,4437242	0	0	0	0	0	0	0	0	0	0	0	0	0	0%
Buckham Lake	-0008	109,135	62,30712	-112,633	0	0	0	0	0	0	0	0	0	0	0	0	0	0%
Campbell Lake	-0008	109,135	62,3281	-112,944	0	0	0	0	0	0	0	0	0	0	0	0	0	0%
Dorothy Lake	-0008 and -0009	109,135	62,45168	-112,534	0	0	0	0	0	0	0	0	0	0	0	0	0	0%
E10	-0008	106,881	62,38078	-112,941	0	0	0	0	0	0	0	0	0	0	0	0	0	0%
E11	-0008	51,184	62,38914	-112,836	0	0	0	0	0	0	0	0	0	0	0	0	0	0%
E12	-0008	6,194	62,37993	-112,811	0	0	0	0	0	0	0	0	0	0	0	0	0	0%
E13	-0009	455	62,37558	-112,8	0	0	0	0	0	0	0	0	0	0	0	0	0	0%
E14	-0008 and -0009	39,864	62,37166	-112,795	0	0	0	0	0	0	0	0	0	0	0	0	0	0%
E15	-0008 and -0009	52,955	62,37377	-112,748	0	0	0	0	0	0	0	0	0	0	0	0	0	0%
E16	-0008	579	62,4089	-112,829	0	0	0	0	0	0	0	0	0	0	0	0	0	0%
E17	-0008	264	62,40923	-112,825	0	0	0	0	0	0	0	0	0	0	0	0	0	0%
E18	-0008	100,706	62,424	-112,808	0	0	0	0	0	0	0	0	0	0	0	0	0	0%
E19	-0008	109,135	62,40651	-112,731	0	0	0	0	0	0	0	0	0	0	0	0	0	0%
E2	-0008	1,312	62,44632	-113,344	0	0	0	0	0	0	0	0	0	0	0	0	0	0%
E20	-0008	73,895	62,40098	-112,654	0	0	0	0	0	0	0	0	0	0	0	0	0	0%
E21	-0008	7,162	62,405	-112,629	0	0	0	0	0	0	0	0	0	0	0	0	0	0%
E22	-0008	24,155	62,41459	-112,62	0	0	0	0	0	0	0	0	0	0	0	0	0	0%
E23	-0008 and -0009	34,546	62,4252	-112,604	0	0	0	0	0	0	0	0	0	0	0	0	0	0%
E24	-0009	1,942	62,43489	-112,583	0	0	0	0	0	0	0	0	0	0	0	0	0	0%
E25	-0008	4,169	62,43421	-112,568	0	0	0	0	0	0	0	0	0	0	0	0	0	0%
E26	-0008	8,840	62,42801	-112,516	0	0	0	0	0	0	0	0	0	0	0	0	0	0%
E27	-0008	109,135	62,4478	-112,477	0	0	0	0	0	0	0	0	0	0	0	0	0	0%
E28	-0008	3,428	62,44666	-112,45	0	0	0	0	0	0	0	0	0	0	0	0	0	0%
E29	-0008	13,907	62,44687	-112,44	0	0	0	0	0	0	0	0	0	0	0	0	0	0%
E3	-0008	105,459	62,44162	-113,336	0	0	0	0	0	0	0	0	0	0	0	0	0	0%
E30	-0008	20,495	62,44774	-112,285	0	0	0	0	0	0	0	0	0	0	0	0	0	0%
E31	-0008	15,193	62,44915	-112,25	0	0	0	0	0	0	0	0	0	0	0	0	0	0%
E34	-0008	109,135	62,38629	-113,054	0	0	0	0	0	0	0	0	0	0	0	0	0	0%
E35	-0008	45,351	62,35137	-113,004	0	0	0	0	0	0	0	0	0	0	0	0	0	0%
E36	-0008	17,522	62,35451	-113,258	0	0	0	0	0	0	0	0	0	0	0	0	0	0%
E37	-0008	25,267	62,35449	-113,237	0	0	0	0	0	0	0	0	0	0	0	0	0	0%
E38	-0008	31,034	62,33988	-113,061	0	0	0	0	0	0	0	0	0	0	0	0	0	0%
E39	-0008	55,911	62,37754	-112,915	0	0	0	0	0	0	0	0	0	0	0	0	0	0%
E4	-0008	20,278	62,43419	-113,363	0	0	0	0	0	0	0	0	0	0	0	0	0	0%
E40	-0008	3,291	62,37882	-112,819	0	0	0	0	0	0	0	0	0	0	0	0	0	0%
E41	-0008 and -0009	4,209	62,37821	-112,8	0	0	0	0	0	0	0	0	0	0	0	0	0	0%
E42	-0008 and -0009	23,049	62,37547	-112,723	0	0	0	0	0	0	0	0	0	0	0	0	0	0%
E43	-0008 and -0009	16,815	62,36553	-112,717	0	0	0	0	0	0	0	0	0	0	0	0	0	0%
E44	-0008	7,621	62,37527	-112,763	0	0	0	0	0	0	0	0	0	0	0	0	0	0%
E45	-0008	17,531	62,38478	-112,808	0	0	0	0	0	0	0	0	0	0	0	0	0	0%
E46	-0008	14,569	62,40584	-112,812	0	0	0	0	0	0	0	0	0	0	0	0	0	0%
E47	-0008	19,347	62,40453	-112,876	0	0	0	0	0	0	0	0	0	0	0	0	0	0%
E48	-0008 and -0009	27,667	62,41006	-112,86	0	0	0	0	0	0	0	0	0	0	0	0	0	0%
E54	-0008 and -0009	20,998	62,4412	-112,559	0	0	0	0	0	0	0	0	0	0	0	0	0	0%
FF59	-0009	28,702	62,3537	-112,755	0	0	0	0	0	0	0	0	0	0	0	0	0	0%
FF60	-0009	6,329	62,35252	-112,744	0	0	0	0	0	0	0	0	0	0	0	0	0	0%
FF61	-0008 and -0009	72,183	62,33435	-112,743	0	0	0	0	0	0	0	0	0	0	0	0	0	0%
FF63	-0008 and -0009	109,135	62,36571	-112,683	0	0	0	0	0	0	0	0	0	0	0	0	0	0%
Totals (m3):					0	0	0	0	0	0	1,841	3,054	1,694	1,756	2,289	100	2,172	12,907

*Water Licence MV2022L8-0008 is Territorial and Water Licence # MV2022L8-0009 is Federal

Appendix B. Monthly and Annual Quantities of Drill Waste by Location

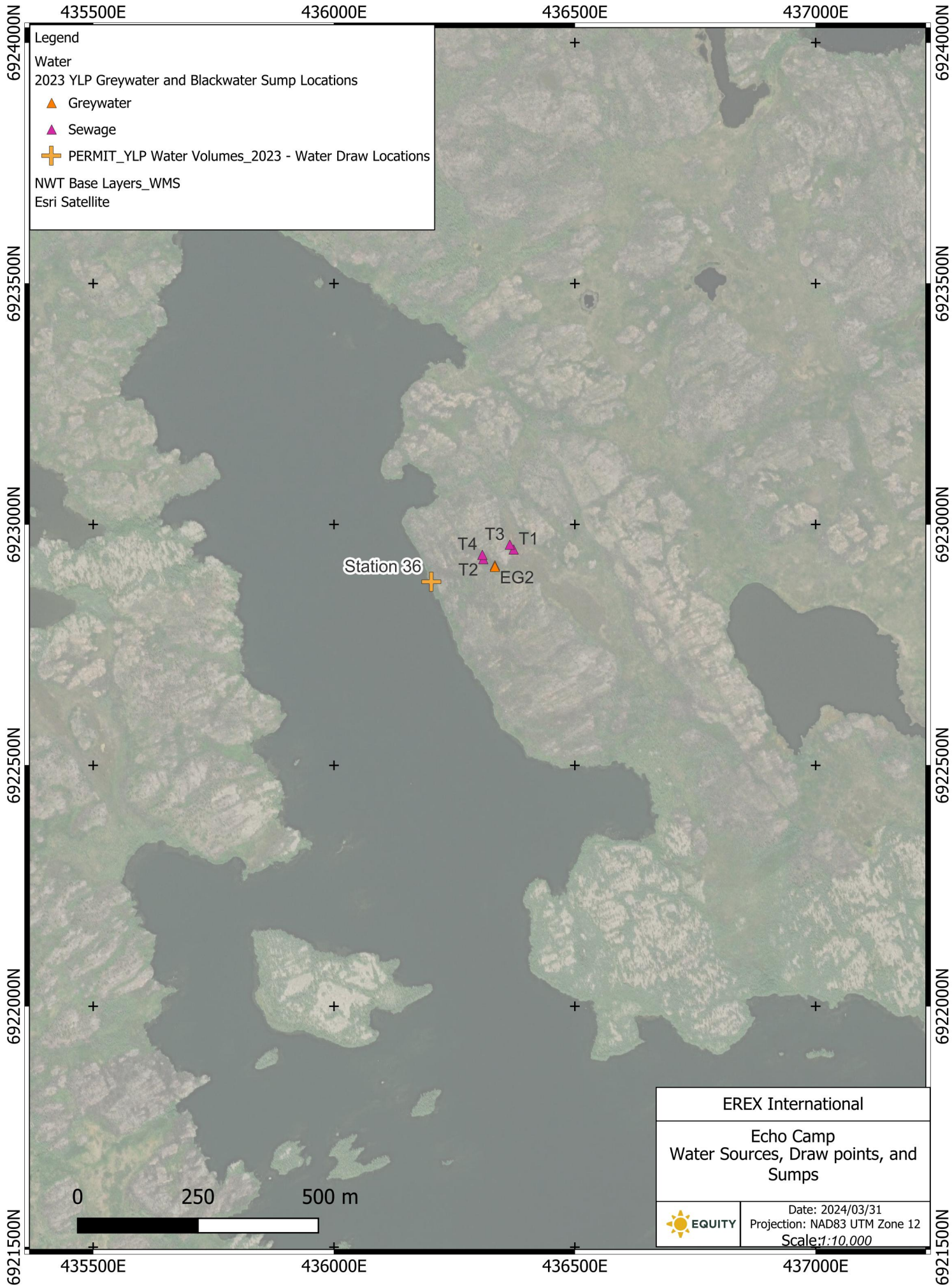
Sump Name	Jurisdiction	Waste Volume (m3)						Annual Total
		June	July	August	September	October	November	
B_D079	Territorial	0.0	2.9	0.0	0.0	0.0	0.0	2.9
B_D082	Territorial	0.0	5.3	0.0	0.0	0.0	0.0	5.3
B_P012	Territorial	0.0	0.0	0.0	0.0	11.6	0.0	11.6
B_P014	Territorial	0.0	0.0	0.0	0.0	8.0	0.0	8.0
B_P043	Territorial	0.0	0.0	0.0	0.0	3.7	0.0	3.7
B_P087	Territorial	0.0	6.6	0.0	0.0	0.0	0.0	6.6
B_P091	Territorial	0.0	6.7	0.0	0.0	0.0	0.0	6.7
B_P129	Territorial	0.0	1.1	2.3	0.0	0.0	0.0	3.4
BD_004	Territorial	0.0	0.0	0.0	3.2	0.0	0.0	3.2
BD_005	Territorial	0.0	0.0	0.0	3.3	0.0	0.0	3.3
BD_006	Territorial	0.0	0.0	0.0	4.7	0.0	0.0	4.7
BD_008	Territorial	0.0	0.0	0.0	0.0	3.3	0.0	3.3
BD_009	Territorial	0.0	0.0	0.0	3.5	0.0	0.0	3.5
BD_010	Territorial	0.0	0.0	0.0	0.0	3.5	0.0	3.5
BD_011	Territorial	0.0	0.0	0.0	0.0	8.0	0.0	8.0
BD_016	Territorial	0.0	0.0	0.0	5.0	2.5	0.0	7.5
BD_017	Territorial	0.0	0.0	0.0	3.6	0.0	0.0	3.6
BD_018	Territorial	0.0	0.0	0.0	9.0	0.0	0.0	9.0
BD_023	Territorial	0.0	0.0	0.0	0.0	4.3	0.0	4.3
BD_024	Territorial	0.0	0.0	0.0	0.0	8.0	0.0	8.0
BD_033	Territorial	0.0	0.0	0.0	0.0	7.7	0.0	7.7
BD_045	Territorial	0.0	0.0	0.0	1.6	1.6	0.0	3.1
BD_046	Territorial	0.0	0.0	0.0	0.0	7.9	0.0	7.9
BD_051	Territorial	0.0	0.0	0.0	0.0	3.9	0.0	3.9
BD_053	Territorial	0.0	0.0	0.0	0.0	6.5	0.0	6.5
BD_054	Territorial	0.0	0.0	0.0	0.0	7.4	0.0	7.4
BD_055	Territorial	0.0	0.0	0.0	0.0	3.6	0.0	3.6
BD_056	Territorial	0.0	0.0	0.0	0.0	10.7	0.0	10.7
BD_064	Territorial	0.0	6.0	0.0	0.0	0.0	0.0	6.0
BD_067	Territorial	0.0	6.3	0.0	0.0	0.0	0.0	6.3
BD_068	Territorial	0.0	0.0	9.3	0.0	0.0	0.0	9.3
BD_070	Territorial	0.0	0.0	4.9	0.0	0.0	0.0	4.9
BD_071	Territorial	0.0	0.0	9.1	0.0	0.0	0.0	9.1
BD_072	Territorial	0.0	0.0	8.2	5.8	0.0	0.0	14.0
BD_073	Territorial	0.0	3.7	0.0	0.0	0.0	0.0	3.7
BD_074	Territorial	0.0	0.0	4.9	0.0	0.0	0.0	4.9
BD_075	Territorial	0.0	2.8	0.0	0.0	0.0	0.0	2.8
BD_076	Territorial	0.0	0.0	0.0	5.1	0.0	0.0	5.1
BD_077	Territorial	0.0	0.0	4.8	4.3	0.0	0.0	9.1
BD_080	Territorial	0.0	0.0	4.6	0.0	0.0	0.0	4.6
BD_083	Territorial	0.0	0.0	8.9	0.0	0.0	0.0	8.9
BD_084	Territorial	0.0	0.0	13.5	0.0	0.0	0.0	13.5
BD_085	Territorial	0.0	7.0	0.0	0.0	0.0	0.0	7.0
BD_086	Territorial	0.0	3.8	0.0	0.0	0.0	0.0	3.8
BD_088	Territorial	0.0	6.9	4.6	0.0	0.0	0.0	11.5
BD_092	Territorial	0.0	8.1	0.0	0.0	0.0	0.0	8.1
BD_093	Territorial	0.0	6.4	0.0	0.0	0.0	0.0	6.4
BD_096	Territorial	0.0	5.1	0.0	0.0	0.0	0.0	5.1
BD_099	Territorial	0.0	3.0	0.0	0.0	0.0	0.0	3.0
BD_107	Territorial	0.0	0.0	0.0	3.3	0.0	0.0	3.3
BD_110	Territorial	0.0	0.0	0.0	3.5	0.0	0.0	3.5

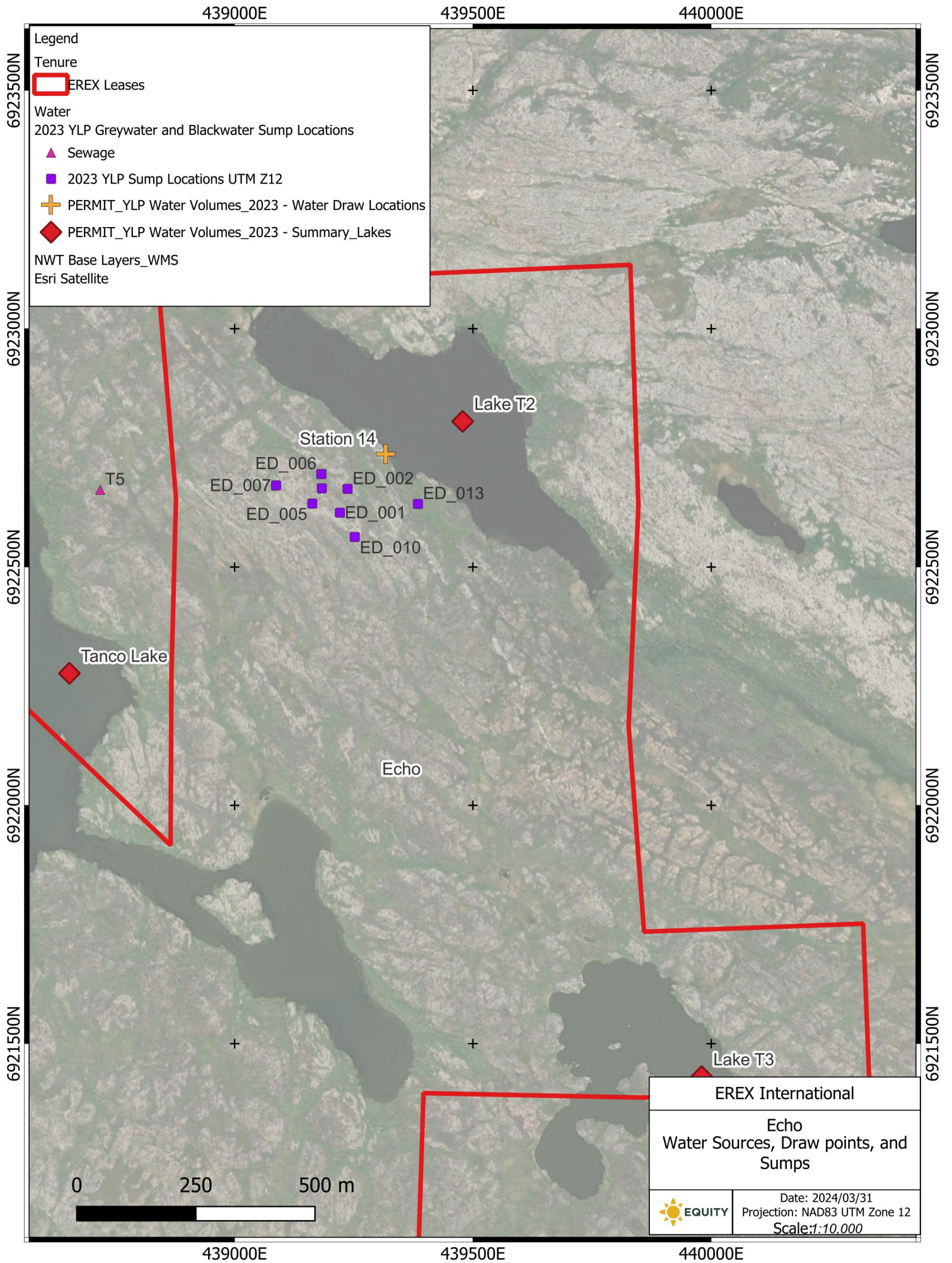
BD_111	Territorial	0.0	0.0	0.0	9.6	0.0	0.0	9.6
BD_123	Territorial	0.0	0.0	0.0	0.0	1.4	0.0	1.4
BD_124	Territorial	0.0	0.0	0.0	0.0	1.1	0.0	1.1
BD_125	Territorial	0.0	0.0	0.0	0.0	3.9	0.0	3.9
BD_126	Territorial	0.0	0.0	0.0	0.0	1.1	0.0	1.1
BD_128	Territorial	0.0	0.0	0.0	0.0	5.5	0.0	5.5
BD_130	Territorial	0.0	3.0	0.0	0.0	0.0	0.0	3.0
BD_133	Territorial	0.0	0.0	0.0	3.2	0.0	0.0	3.2
BD_135	Territorial	0.0	0.0	0.0	0.0	3.0	0.0	3.0
BD_146	Territorial	0.0	5.6	0.0	0.0	0.0	0.0	5.6
BD_148	Territorial	0.0	0.0	4.1	0.0	0.0	0.0	4.1
BD_149	Territorial	0.0	0.0	0.0	0.0	3.9	0.0	3.9
ED_001	Territorial	0.0	0.0	3.6	0.0	0.0	0.0	3.6
ED_002	Territorial	0.0	0.0	5.4	0.0	0.0	0.0	5.4
ED_003	Territorial	0.0	0.0	0.0	8.8	0.0	0.0	8.8
ED_005	Territorial	0.0	0.0	3.9	0.0	0.0	0.0	3.9
ED_006	Territorial	0.0	0.0	0.0	5.7	0.0	0.0	5.7
ED_007	Territorial	0.0	0.0	0.0	4.5	0.0	0.0	4.5
ED_010	Territorial	0.0	0.0	0.0	4.3	0.0	0.0	4.3
ED_013	Territorial	0.0	0.0	7.5	0.0	0.0	0.0	7.5
F_D025	Territorial	0.0	0.0	0.0	21.0	13.8	0.0	34.8
F_D054	Territorial	0.0	0.0	0.0	3.7	0.0	0.0	3.7
F_D060	Territorial	0.0	0.0	0.0	1.8	1.8	0.0	3.6
F_D101	Territorial	0.0	0.0	0.0	0.0	5.5	0.0	5.5
F_D202	Territorial	0.0	0.0	5.2	0.0	0.0	0.0	5.2
F_D203	Territorial	0.0	3.7	16.2	0.0	0.0	0.0	19.9
FD_001	Territorial	0.0	9.1	0.0	0.0	0.0	0.0	9.1
FD_002	Territorial	0.0	8.5	0.0	0.0	0.0	0.0	8.5
FD_003	Territorial	8.2	8.5	0.0	0.0	0.0	0.0	16.7
FD_004	Territorial	0.0	4.2	0.0	0.0	0.0	0.0	4.2
FD_005	Territorial	0.0	9.6	0.0	0.0	0.0	0.0	9.6
FD_007	Territorial	0.0	4.0	0.0	0.0	0.0	0.0	4.0
FD_008	Territorial	0.0	9.0	0.0	0.0	0.0	0.0	9.0
FD_009	Territorial	0.0	0.0	7.3	6.6	0.0	0.0	13.9
FD_010	Territorial	5.2	0.0	0.0	0.0	0.0	0.0	5.2
FD_011	Territorial	0.0	9.7	0.0	0.0	0.0	0.0	9.7
FD_012	Territorial	6.5	12.6	0.0	0.0	0.0	0.0	19.1
FD_013	Territorial	5.2	0.0	0.0	0.0	0.0	0.0	5.2
FD_014	Territorial	5.1	0.0	0.0	0.0	0.0	0.0	5.1
FD_015	Territorial	2.9	5.8	0.0	0.0	0.0	0.0	8.7
FD_016	Territorial	0.0	12.8	0.0	0.0	0.0	0.0	12.8
FD_019	Territorial	8.0	0.0	0.0	0.0	0.0	0.0	8.0
FD_023	Territorial	0.0	19.9	0.0	0.0	0.0	0.0	19.9
FD_024	Territorial	0.0	0.0	12.4	0.0	0.0	0.0	12.4
FD_025	Territorial	3.6	3.9	8.1	0.0	0.0	0.0	15.5
FD_027	Territorial	0.0	3.6	0.0	0.0	0.0	0.0	3.6
FD_028	Territorial	0.0	8.7	0.0	0.0	0.0	0.0	8.7
FD_037	Territorial	5.5	0.0	0.0	0.0	0.0	0.0	5.5
FD_038	Territorial	9.8	0.0	0.0	0.0	0.0	0.0	9.8
FD_039	Territorial	5.6	0.0	0.0	0.0	0.0	0.0	5.6
FD_042	Territorial	6.2	0.0	0.0	0.0	0.0	0.0	6.2
FD_044	Territorial	0.0	0.0	0.0	9.0	3.6	0.0	12.6
FD_045	Territorial	15.7	0.0	0.0	0.0	0.0	0.0	15.7

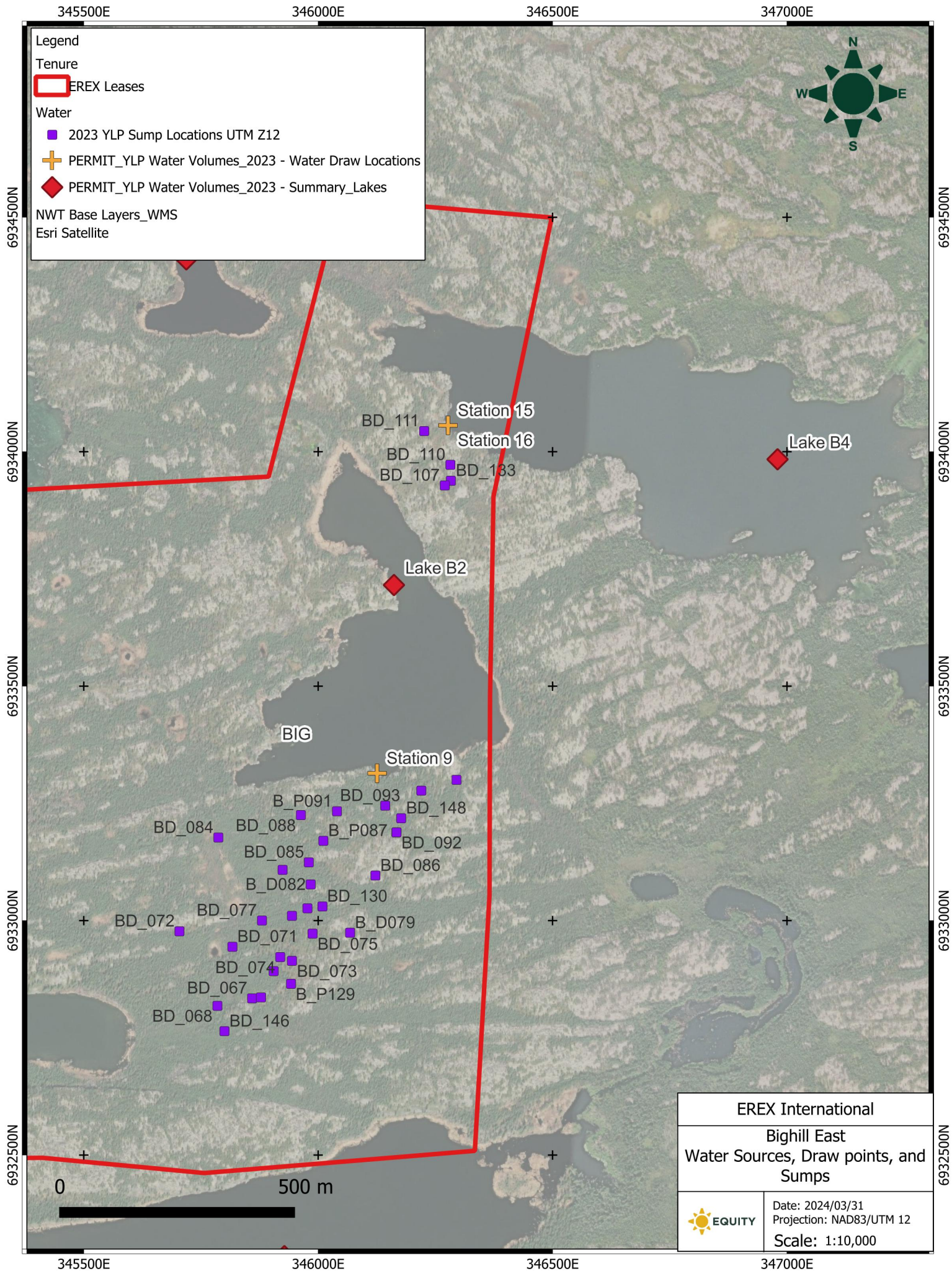
FD_047	Territorial	5.5	0.0	0.0	0.0	0.0	0.0	5.5
FD_049	Territorial	13.6	0.0	0.0	0.0	0.0	0.0	13.6
FD_050	Territorial	4.4	0.0	0.0	0.0	0.0	0.0	4.4
FD_054	Territorial	3.8	0.0	0.0	0.0	0.0	0.0	3.8
FD_057	Territorial	4.4	0.0	0.0	0.0	0.0	0.0	4.4
FD_058	Territorial	9.4	0.0	0.0	0.0	0.0	0.0	9.4
FD_059	Territorial	13.6	0.0	0.0	0.0	0.0	0.0	13.6
FD_060	Territorial	1.9	1.9	0.0	0.0	0.0	0.0	3.8
FD_063	Territorial	0.0	4.3	0.0	0.0	0.0	0.0	4.3
FD_069	Territorial	0.0	2.9	0.0	0.0	0.0	0.0	2.9
FD_073	Territorial	0.0	0.0	0.0	8.5	0.0	0.0	8.5
FD_080	Territorial	4.3	0.0	0.0	0.0	0.0	0.0	4.3
FD_081	Territorial	0.0	0.0	0.0	0.0	4.0	0.0	4.0
FD_082	Territorial	0.0	4.8	0.0	0.0	0.0	0.0	4.8
FD_090	Territorial	0.0	0.0	0.0	0.0	4.8	0.0	4.8
FD_092	Territorial	0.0	0.0	0.0	0.0	4.9	0.0	4.9
FD_72	Territorial	0.0	3.2	0.0	0.0	0.0	0.0	3.2
FD_75	Territorial	0.0	3.1	0.0	0.0	0.0	0.0	3.1
H_D002	Territorial	0.0	0.0	5.2	0.0	0.0	0.0	5.2
H_D013	Territorial	0.0	6.0	0.0	0.0	0.0	0.0	6.0
H_D018	Territorial	0.0	5.3	0.0	0.0	0.0	0.0	5.3
H_D022	Territorial	0.0	8.4	0.0	0.0	0.0	0.0	8.4
H_D026	Territorial	0.0	1.0	1.0	0.0	0.0	0.0	2.0
H_D027	Territorial	0.0	0.0	8.4	0.0	0.0	0.0	8.4
HD_001	Territorial	0.0	0.0	4.2	0.0	0.0	0.0	4.2
HD_003	Territorial	0.0	0.0	3.5	0.0	0.0	0.0	3.5
HD_004	Territorial	0.0	0.0	7.0	10.2	0.0	0.0	17.2
HD_005	Territorial	0.0	0.0	6.7	4.4	0.0	0.0	11.1
HD_007	Territorial	0.0	18.1	0.0	0.0	0.0	0.0	18.1
HD_012	Territorial	0.0	3.5	0.0	0.0	0.0	0.0	3.5
HD_014	Territorial	0.0	6.0	0.0	0.0	0.0	0.0	6.0
HD_019	Territorial	0.0	0.0	0.0	10.8	0.0	0.0	10.8
HD_024	Territorial	0.0	0.0	0.0	3.4	0.0	0.0	3.4
HD_028	Territorial	0.0	4.2	0.0	0.0	0.0	0.0	4.2
HD_030	Territorial	0.0	0.0	4.9	0.0	0.0	0.0	4.9
K_D026	Territorial	0.0	0.0	0.0	0.0	3.8	0.0	3.8
K_D029	Territorial	0.0	0.0	0.0	0.0	3.9	0.0	3.9
K_D032	Federal	0.0	0.0	0.0	0.0	3.5	0.0	3.5
K_D048	Territorial	0.0	5.7	1.4	0.0	0.0	0.0	7.2
KD_001	Territorial	0.0	1.2	3.7	0.0	3.4	0.0	8.3
KD_003	Territorial	0.0	0.0	0.0	0.0	8.0	0.0	8.0
KD_007	Territorial	0.0	0.0	0.0	0.0	13.1	0.0	13.1
KD_008	Territorial	0.0	1.6	10.0	0.0	8.8	0.0	20.4
KD_010	Territorial	0.0	0.0	0.0	0.0	8.0	0.0	8.0
KD_011	Territorial	0.0	0.0	0.0	0.0	11.3	0.0	11.3
KD_014	Territorial	0.0	0.0	7.3	0.0	0.0	0.0	7.3
ND_019	Territorial	0.0	0.0	0.0	4.1	0.0	0.0	4.1
ND_020	Territorial	0.0	0.0	0.0	0.0	8.0	0.0	8.0
ND_021	Territorial	0.0	0.0	0.0	0.0	12.2	0.0	12.2
ND_023	Territorial	0.0	0.0	0.0	0.0	8.3	0.0	8.3
ND_024	Territorial	0.0	0.0	0.0	0.0	12.6	0.0	12.6
ND_026	Territorial	0.0	0.0	0.0	0.0	4.5	0.0	4.5
ND_027	Territorial	0.0	0.0	0.0	0.0	2.2	6.6	8.8


ND_028	Territorial	0.0	0.0	0.0	2.1	2.1	0.0	4.3
ND_029	Territorial	0.0	0.0	0.0	0.0	7.7	0.0	7.7
ND_030	Territorial	0.0	0.0	0.0	0.0	11.9	0.0	11.9
ND_031	Territorial	0.0	0.0	0.0	0.0	3.9	0.0	3.9
ND_032	Territorial	0.0	0.0	0.0	0.0	8.9	0.0	8.9
ND_033	Territorial	0.0	0.0	0.0	0.0	11.9	0.0	11.9
ND_037	Territorial	0.0	0.0	0.0	0.0	3.5	0.0	3.5
ND_040	Territorial	0.0	0.0	0.0	0.0	3.4	0.0	3.4
ND_044	Territorial	0.0	0.0	0.0	3.6	0.0	0.0	3.6
ND_045	Territorial	0.0	0.0	0.0	2.0	0.0	0.0	2.0
ND_046	Territorial	0.0	0.0	0.0	0.0	2.5	10.0	12.6

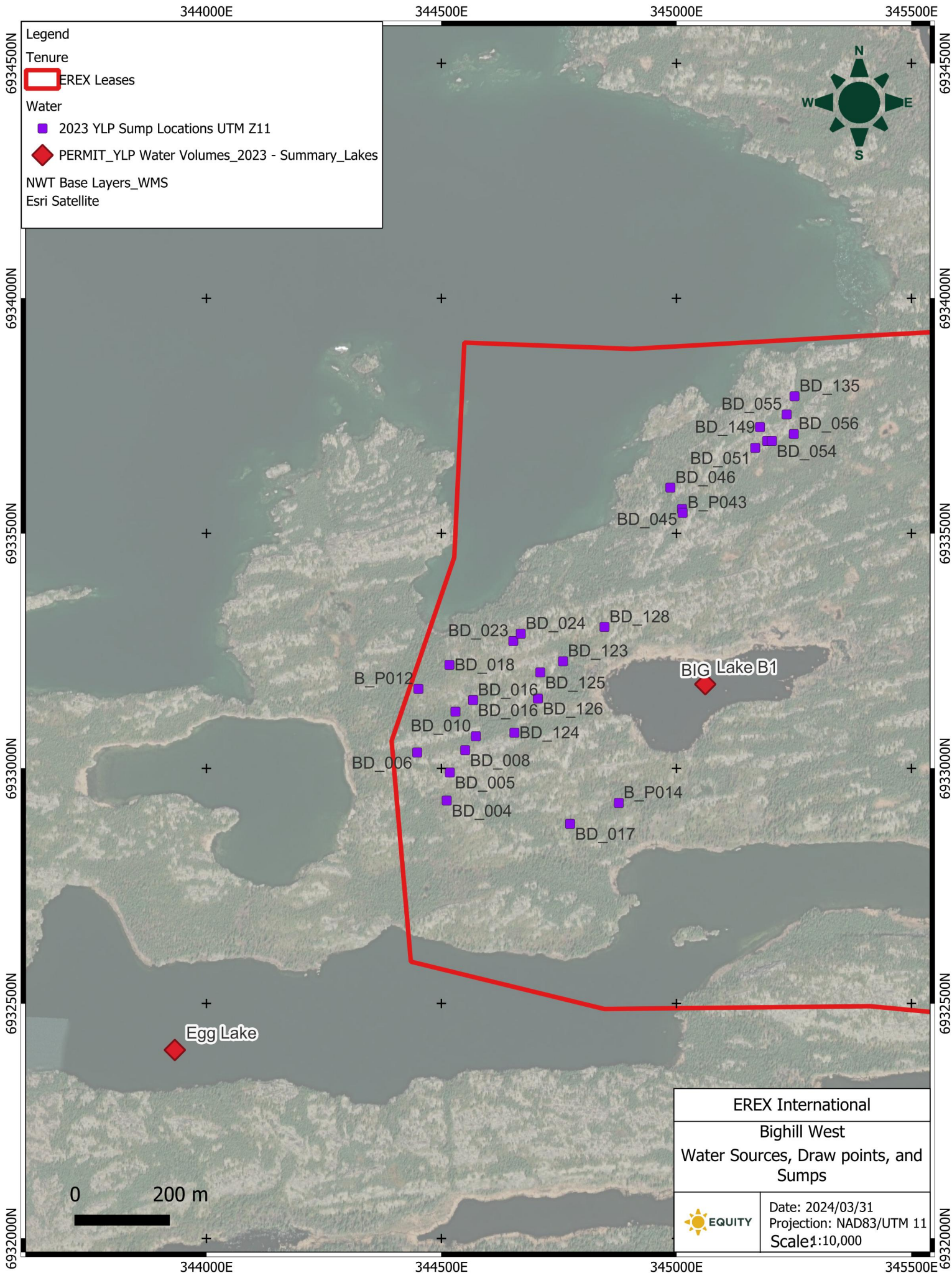
Appendix C. Maps of Water Use and Sump Locations

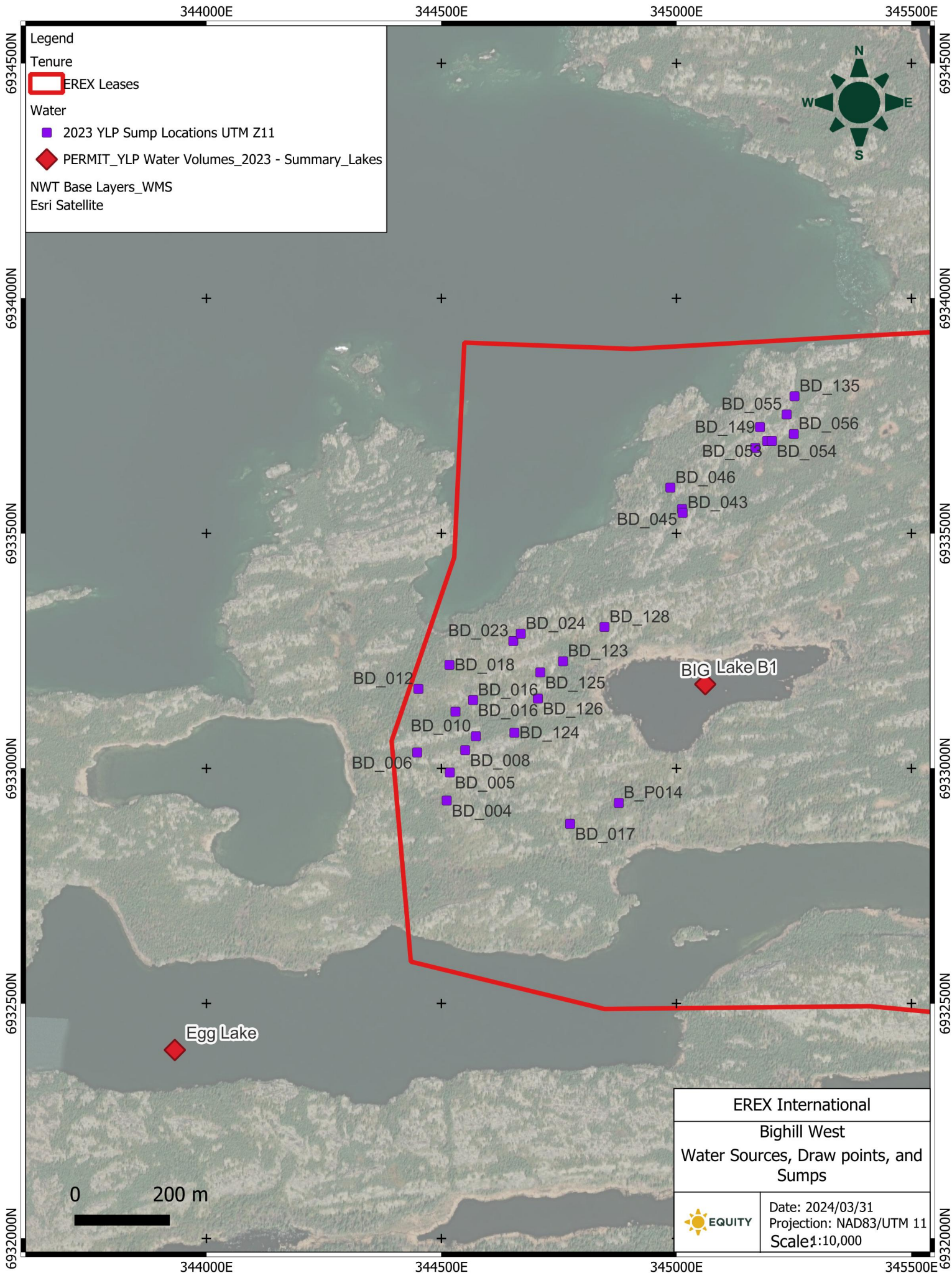


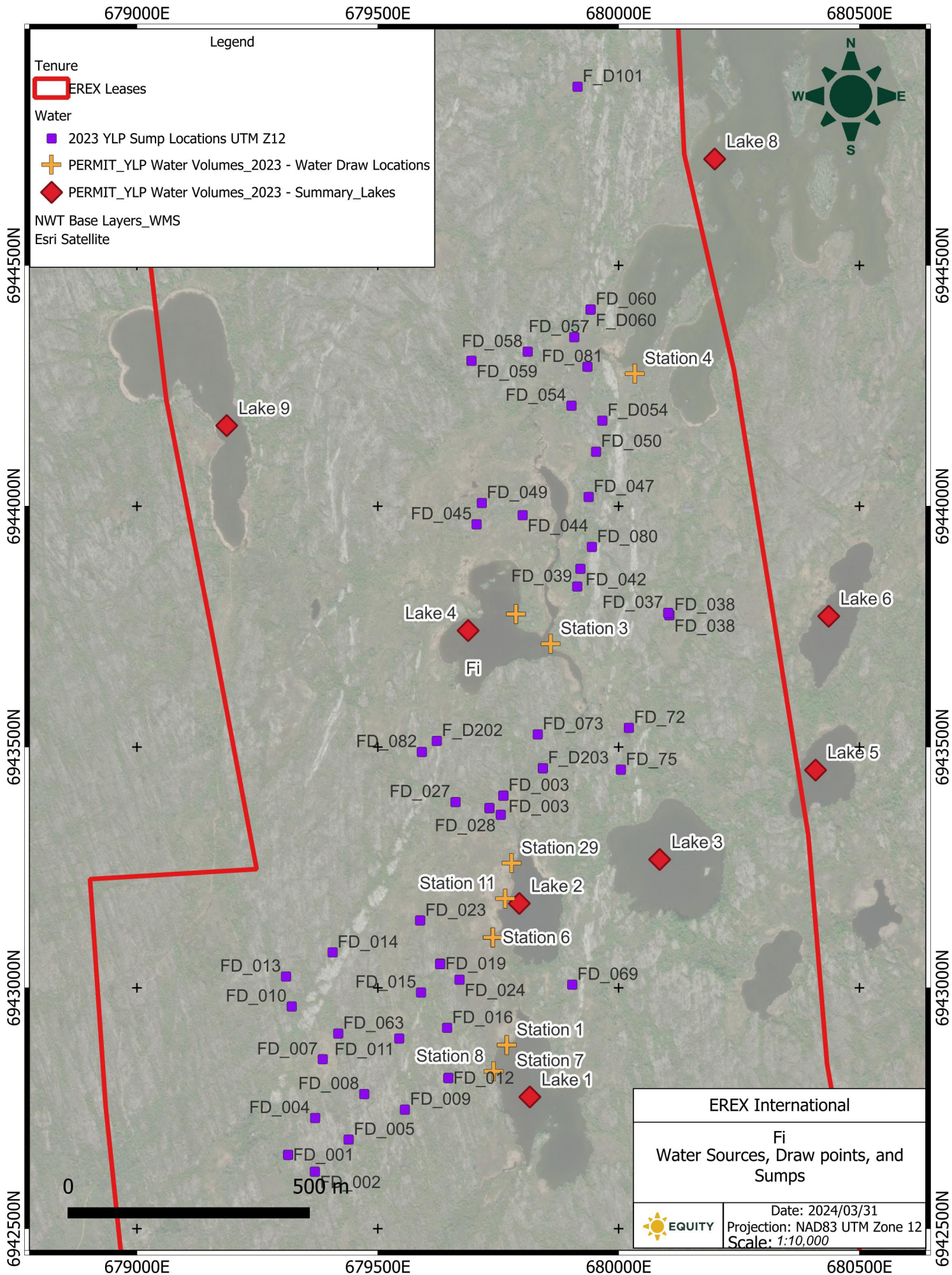


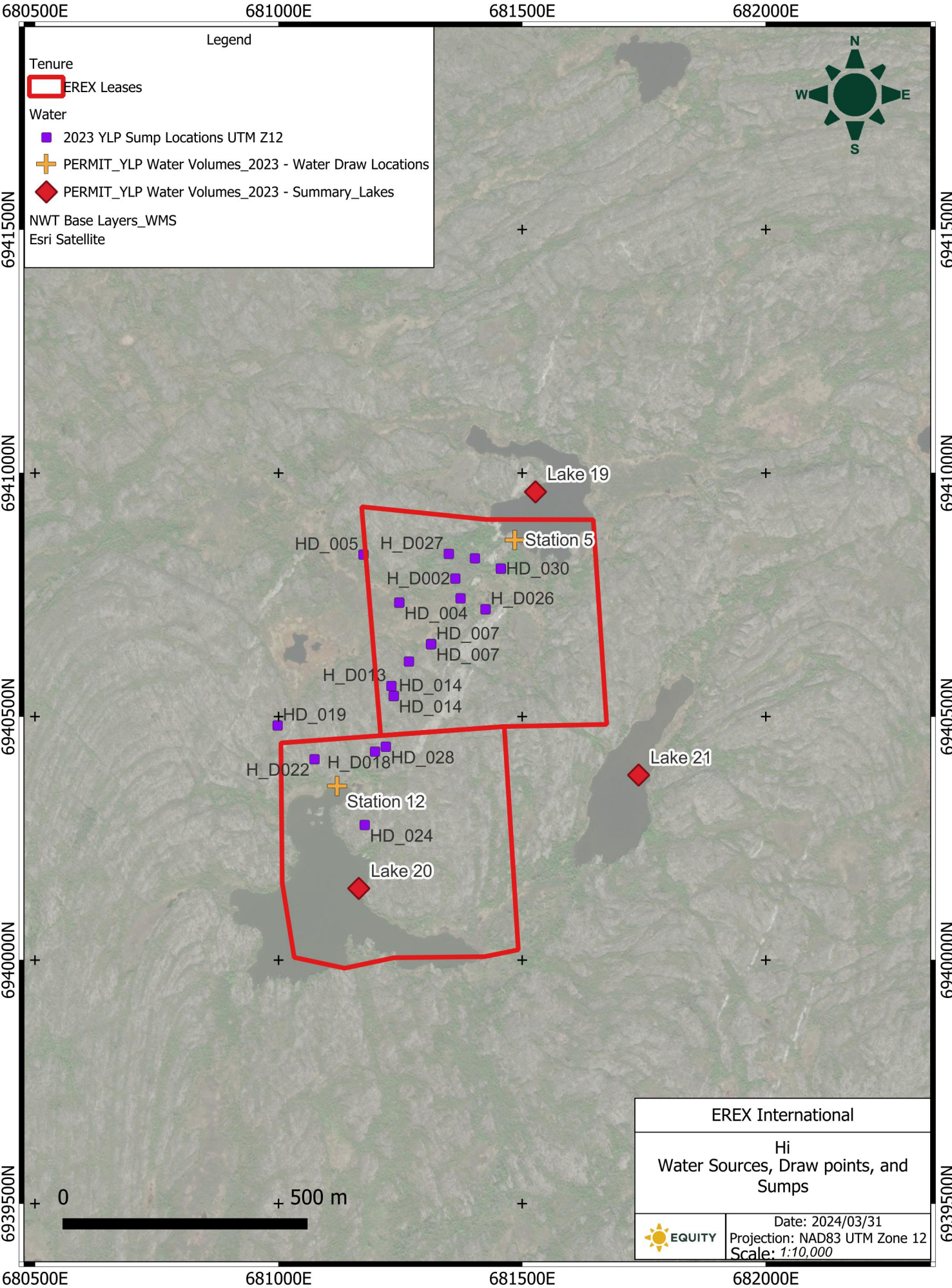


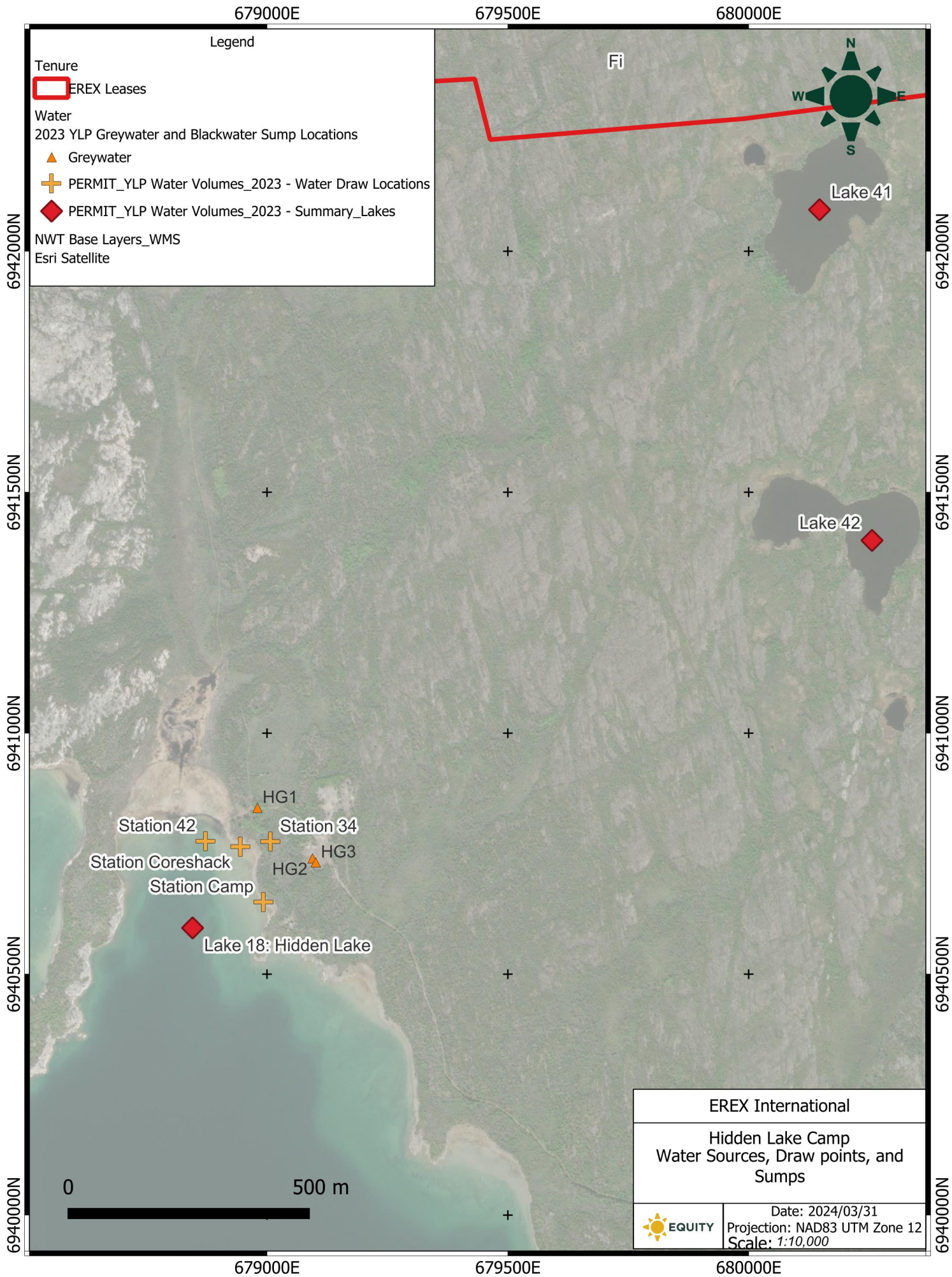
EREX International	
Bighill East Water Sources, Draw points, and Sumps	
 EQUITY	Date: 2024/03/31 Projection: NAD83/UTM 12 Scale: 1:10,000

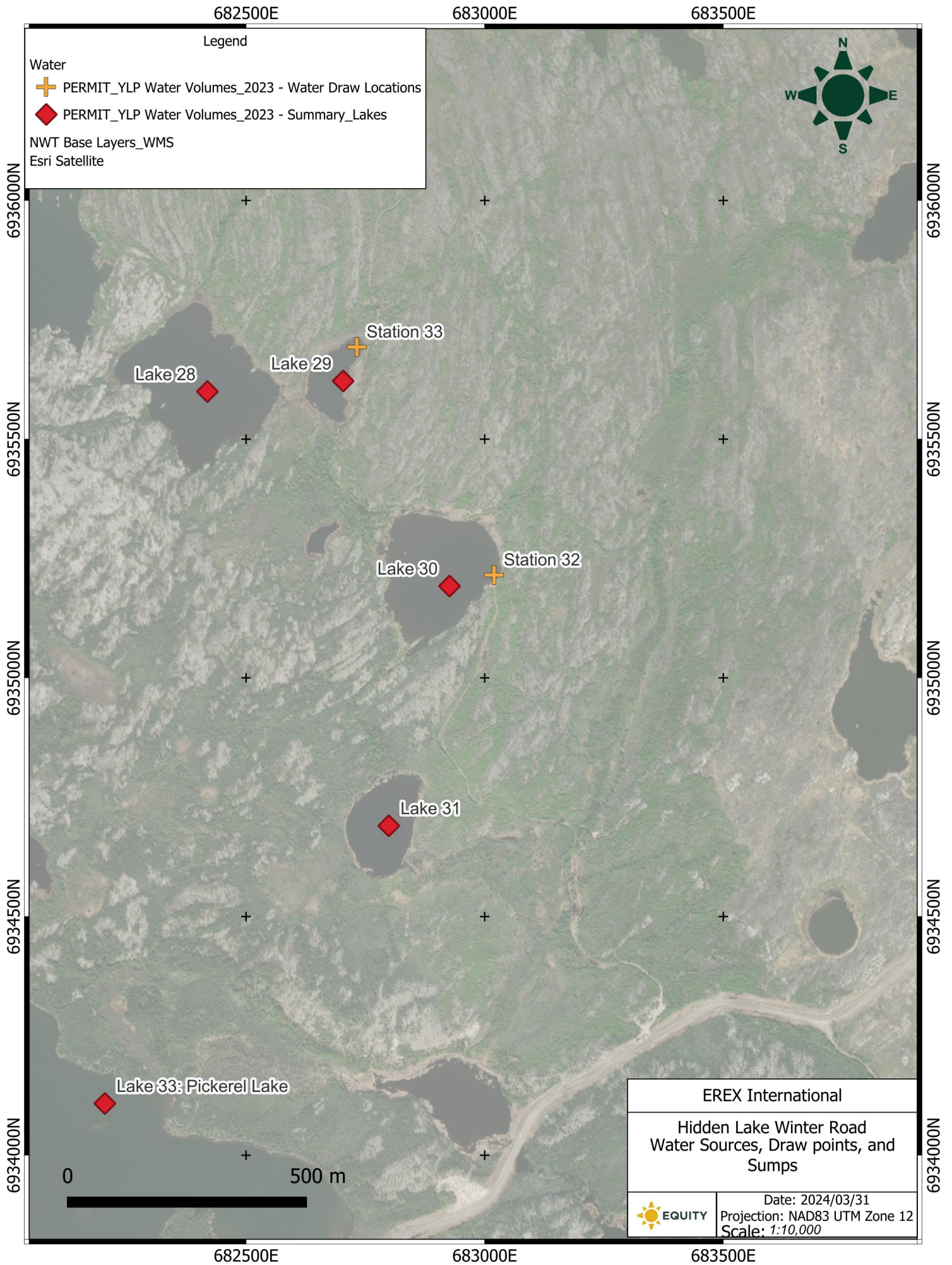


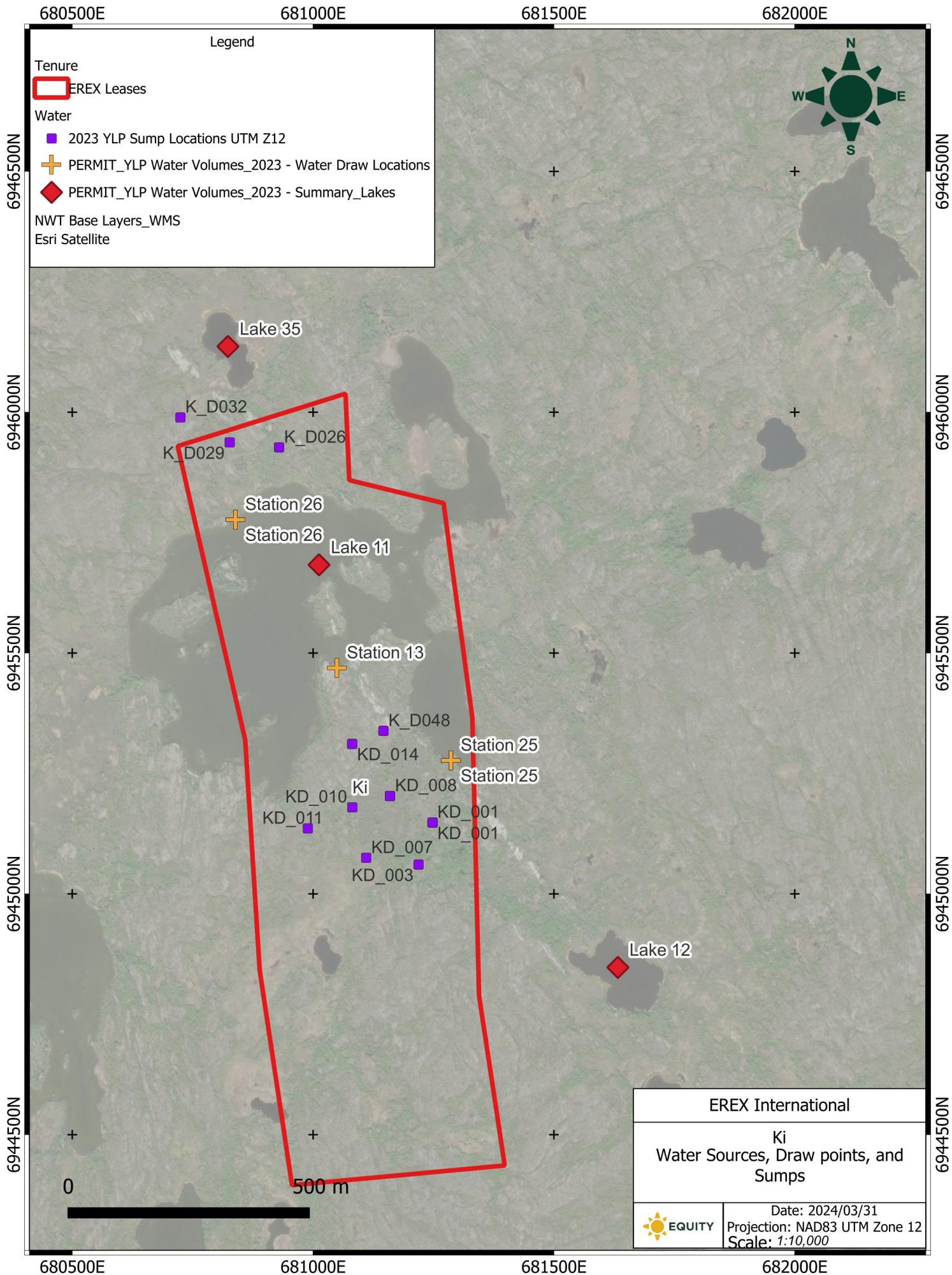


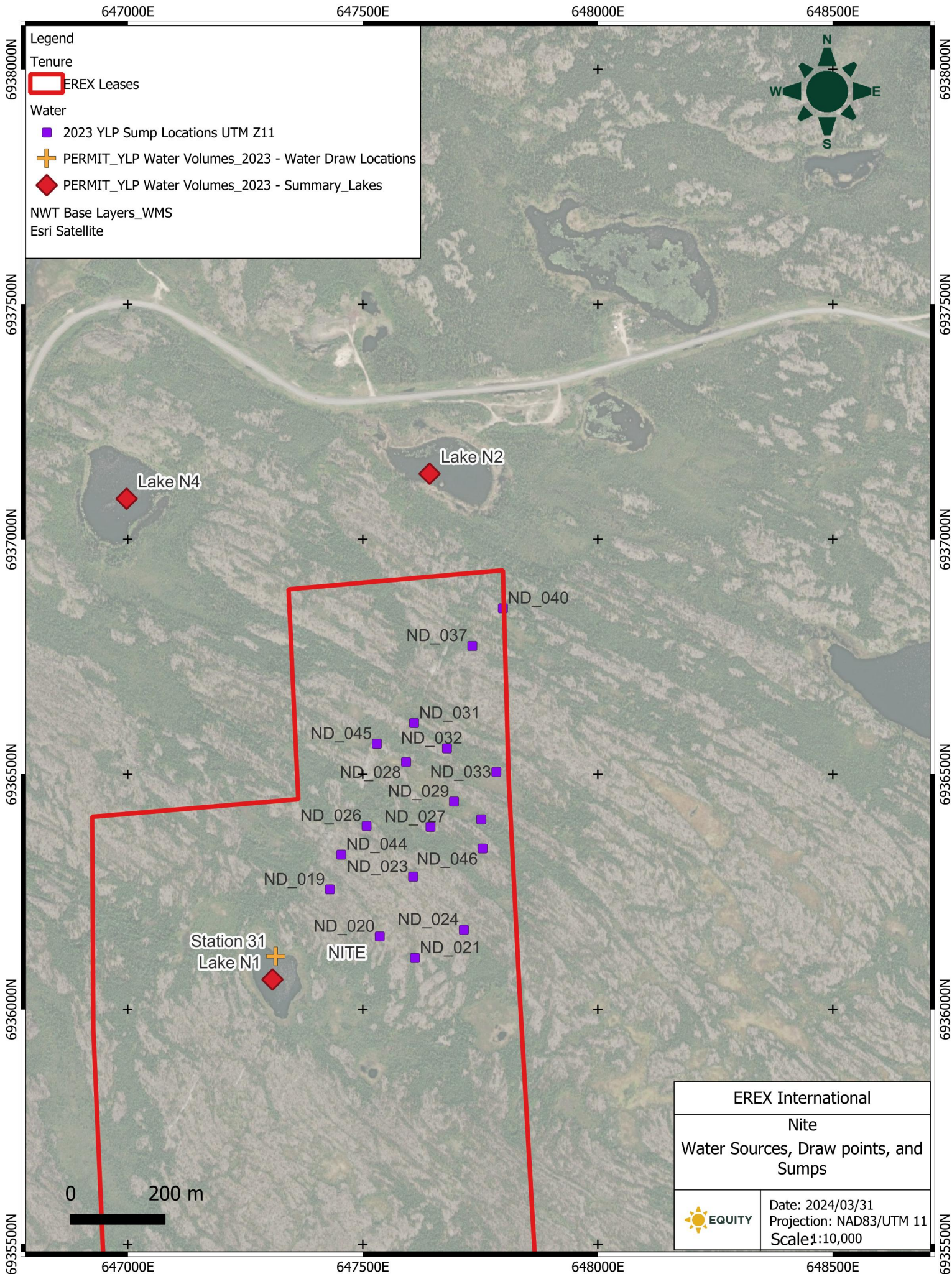












Appendix D. Daily Water Use by Source

Provided in Excel format.