



Project Description - Supplemental

(Version 1.0)

October 2023

YELLOWKNIFE LITHIUM PROJECT MV2022C0021,

MV2022L8-0008, MV2022L8-0009

North Slave Region, Northwest Territories

EREX International Ltd.
1218-1030 West Georgia St.
Vancouver, BC
V6E 3M5
604.609.6185



Introduction

Li-FT Power Ltd. (Li-FT) is a Canadian critical minerals exploration company focused on identifying and defining potential lithium resources in Canada. Li-FT is based in Vancouver, British Columbia and is publicly traded on the Canadian Securities Exchange (LIFT) and Frankfurt Stock Exchange (WSO). Li-FT has assets in Quebec and the Northwest Territories (NT). In the NT, Li-FT's assets are held by its wholly-owned subsidiary, EREX International Ltd. (EREX or the Company) and include the Yellowknife Lithium Project in the North Slave Region and the CALI Project in the Dehcho Region. The Yellowknife Lithium Project (the Project) is the subject of this application.

With this application, EREX is applying for targeted amendments to its existing Type A Land Use Permit (MV2022C0021), Non-federal Type B Water Licence (MV2022L8-0008), and Federal Type B Water Licence (MV2022L8-0009). The proposed amendments are necessary to enable EREX to conduct drilling activities on all its mineral claims and leases and to reflect updated securities estimates based on adjustments to Project activities and address Mackenzie Valley Land and Water Board (MVLWB) directives.¹

Specifically, EREX is seeking the following targeted amendments with this application:

MV2022L8-0008

- Part D, Condition 1 – to include additional water sources that will be used to support domestic (camp), drilling operations, and the construction and maintenance of winter roads and trails.
- Schedule 2, Condition 1 – to reflect revised securities estimates.

MV2022L8-0009

- Part D, Condition 1 – to include additional water sources that will be used to support domestic (camp), drilling operations, and the construction and maintenance of winter roads and trails.
- Schedule 2, Condition 1 – to reflect revised securities estimates.

MV2022C0021²

- Condition 59 and Condition 60 – to reflect revised securities estimates.
- Condition 70 – to reflect an increase in the total amount of fuel stored on site at any time.

This document is intended to supplement the previously submitted Project Descriptions³ and to describe recent adjustments to Project activities in order to allow reviewers to understand the revised RECLAIM estimate. The

¹ In the Reasons for Decision issued by the MVLWB along with the issuance of the amended Water Licences (MV2022L8-0008 and MV2022L8-0009) and Land Use Permit (MV2022C0021) on May 29th, 2023, the MVLWB directed EREX to work with the Government of the Northwest Territories (GNWT) and Crown-Indigenous Relations and Northern Affairs Canada (CIRNAC) to submit an updated Closure and Reclamation Plan (Version 2.0) and RECLAIM model by May 3, 2024. See https://registry.mvlwb.ca/_layouts/15/download.aspx?SourceUrl=/Documents/MV2022C0021/EREX%2520%E2%80%93%2520Approval%2520-%2520Amendment%2520-%2520May29_23.pdf

² EREX does not see a need to amend Conditions 1 and 14, but notes that they will reflect the equipment listed in the original and updated Project Description as well as “Project Description – Supplemental” provided with this application going forward.

³ https://registry.mvlwb.ca/_layouts/15/download.aspx?SourceUrl=/Documents/MV2022C0021/EREX%2520-%2520Permit%2520and%2520Licence%2520Application%2520-%2520Project%2520Description%2520-%2520Nov%25208_22.pdf
https://registry.mvlwb.ca/_layouts/15/download.aspx?SourceUrl=/Documents/MV2022C0021/EREX%2520-%2520Amendment%2520Application%2520-%2520Project%2520Description%2520-%2520Mar%252023_23.pdf

adjustments to Project activities described herein do not change the scopes of the existing Land Use Permit or Water Licences.

Adjustments in Project Activities

ECHO Area

Field reconnaissance performed in the summer of 2023 revealed that the proposed camp location provided in previous Project Descriptions is not suitable. The location of the ECHO Area Camp and a schematic of a possible lay-out for the ECHO Area Camp are shown in Figure 1 and Figure 2, respectively. The exact location and layout of the ECHO Area Camp will be determined in the field, as approved by an Inspector.

Currently, the ECHO Area Camp is expected to operate seasonally from January to April and June to October each year. The camp will accommodate approximately 50 people in approximately 14 sleeper tents. The camp may be expanded to house additional personnel in the future depending on exploration results, as approved by an Inspector. The anticipated number and dimensions of structures at the ECHO Area Camp are provided in Table 1 along with a comparison against the camp infrastructure described previously.⁴ All infrastructure and activities are anticipated to be temporary in nature.

The existing Ruth and/or Bullmoose airstrips may be used to stage fuel, equipment, and personnel to support exploration activities and the ECHO Area Camp. Exploration activities and the ECHO Area Camp may also be supported with Winter Roads and Trails, including the existing Winter Road route from the Ingraham Trail to the Bullmoose and/or Ruth area.⁵ An overview of the existing and proposed Winter Road routes is provided in Figure 3. Larger scale maps of the routes are included in Appendix A. EREX is working with CIRNAC to ensure access agreements are in place for federal land, as needed.

One to two temporary fly camps may also be established on territorial land, as approved by an Inspector, to support drilling on remote mineral claims and leases. The approximate number and dimensions of structures associated with each temporary fly camp are provided in Table 2.

Estimates of the total anticipated disturbance to Territorial and Federal Lands are provided in Appendix B.

Fuel and Equipment

EREX has identified that a small increase in the total quantity of fuel is required to support operations in the ECHO area. As such, the total quantity of fuel required on territorial land differs from previous descriptions.⁶ A comparison of the previously described and adjusted quantities of fuel that will be stored on territorial land is provided in Table 3. No changes in the quantity of fuel that will be stored on federal land is required (Table 3).

EREX has also identified additional equipment that is needed to support Project activities. A complete equipment list is provided in Table 4 along with a comparison against equipment described previously.⁷

⁴ https://registry.mvlwb.ca/_layouts/15/download.aspx?SourceUrl=/Documents/MV2022C0021/EREX%2520-%2520Amendment%2520Application%2520-%2520Project%2520Description%2520-%2520Mar%252023.pdf

⁵ The route was previously screened and permitted under MV2016X0013 and MV2016L8-0004 and was last used, by CIRNAC and its contractors, in 2018. The route includes segments that are located on both Federal and Territorial Land.

⁶ https://registry.mvlwb.ca/_layouts/15/download.aspx?SourceUrl=/Documents/MV2022C0021/EREX%2520-%2520Closure%2520and%2520Reclamation%2520Plan%2520-%2520Version%25201.1%2520-%2520Mar%252023.pdf

⁷ https://registry.mvlwb.ca/_layouts/15/download.aspx?SourceUrl=/Documents/MV2022C0021/EREX%2520-%2520Closure%2520and%2520Reclamation%2520Plan%2520-%2520Version%25201.1%2520-%2520Mar%252023.pdf

Water Sources

EREX has identified additional water sources that are required to enable drilling on all of EREX's mineral claims and leases and to support exploration activities (e.g., camp, winter roads and trails) in the ECHO area. An overview of the proposed additional water sources is provided in Figure 4. Larger scale maps showing the proposed additional water sources are provided in Appendix C. Camp water use is expected to average 9 m³/d per day. However, as much as 299 m³ could be withdrawn for camp purposes on any single day. Each drill is expected to use an average of 45 m³/d. However, multiple drills may be used on a single lake at any time and, as such, as much as 299 m³ could be withdrawn for drilling purposes from any source on any single day. Winter Road and trail construction may require as much as 299 m³ from any source on any single day.

A table of additional water sources that EREX is requesting be added to the Non-Federal Water Licence (MV2022L8-008) and their capacities is provided in Table 5. A table of additional water sources that EREX is requesting be added to the Federal Water Licence (MV2022L8-009) and their capacities is provided in Table 6.

Total water use will remain <300 m³ per day across both WL2022L8-0008 and WL2022L8-0009. Thus, there are no additional water use fees as a result of the amendment.

Hidden Lake Camp

EREX has identified a need to increase the number of sleeper tents at the Hidden Lake Camp to accommodate environmental baseline data collection teams in the years ahead. EREX may also establish pit latrines at the Hidden Lake Camp in the future. The anticipated number and dimensions of structures at the Hidden Lake Camp are provided in Table 7 along with a comparison against the camp infrastructure described previously.⁸

Estimates of the total anticipated disturbance to Territorial and Federal Lands are provided in Appendix B.

Project Schedule

Exploration activities began in June of 2023. Initially, exploration focused on areas in close proximity to Yellowknife and the Hidden Lake Camp. Exploration activities including drilling and channel sampling will continue through the remainder of 2023. Winter Road and trail building will begin in late 2023 to support continued exploration activities in the winter of 2024 and beyond.

Exploration activities were expanded to include drilling in the ECHO Area in the summer of 2023. Construction on the ECHO Area Camp began in the autumn of 2023. Exploration activities, including drilling and channel sampling, will continue through the remainder of 2023. Winter Road and Trail building will begin in late 2023 to support continued exploration in the winter of 2024 and beyond.

Resource development and geotechnical drilling will be required to support development planning in the future.

⁸ <https://registry.mvlwb.ca/layouts/15/download.aspx?SourceUrl=/Documents/MV2022C0021/EREX%2520-%2520Amendment%2520Application%2520-%2520Project%2520Description%2520-%2520Mar%252023.pdf>

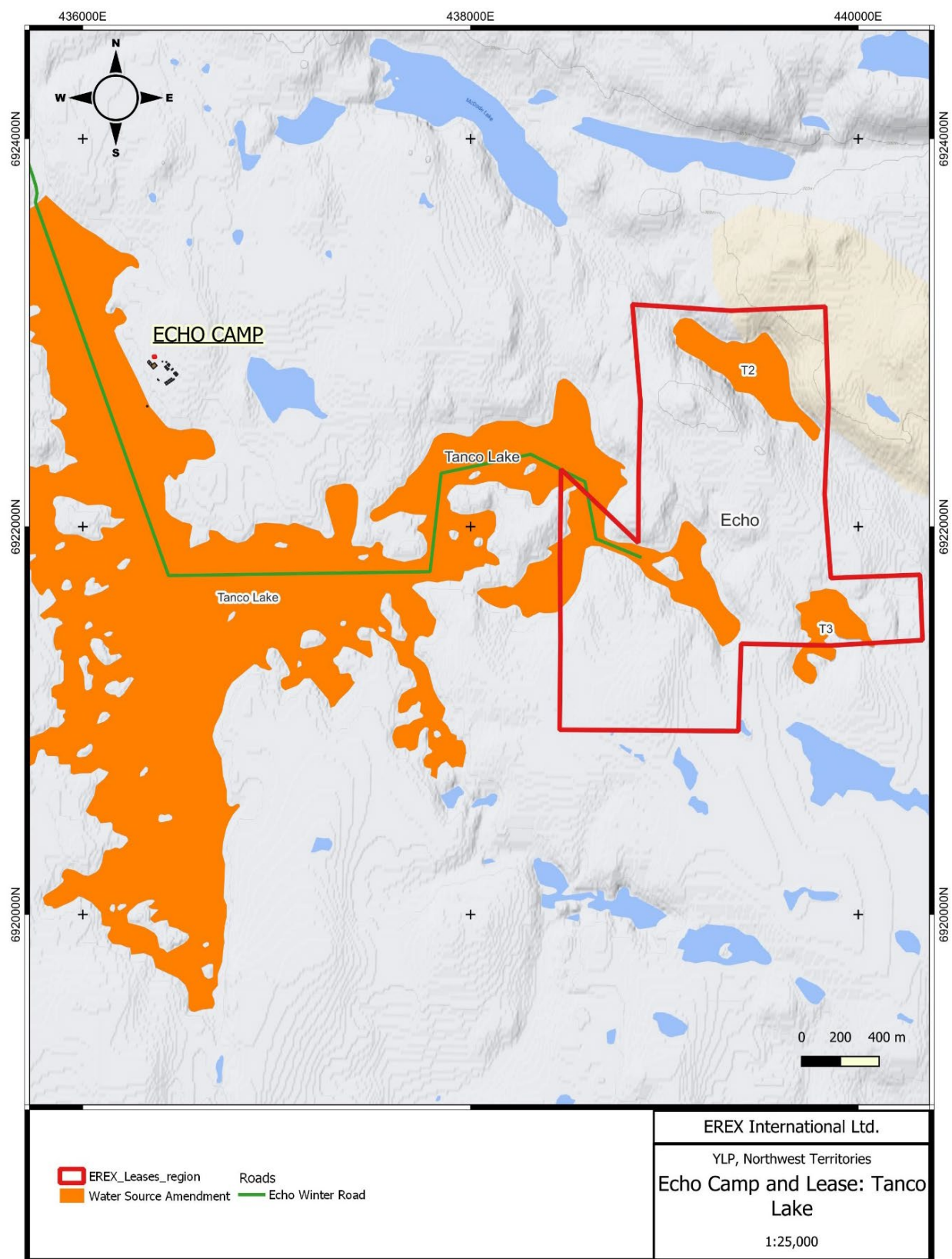


Figure 1: ECHO Area Camp Location

YELLOWKNIFE LITHIUM PROJECT MV2022C0021, MV2022L8-0008, MV2022L8-0009

Project Description - Supplemental

EREX International Ltd., 300-1055 West Hastings St. / Vancouver, BC V6E 2E9 / Ph: 604-609-6185

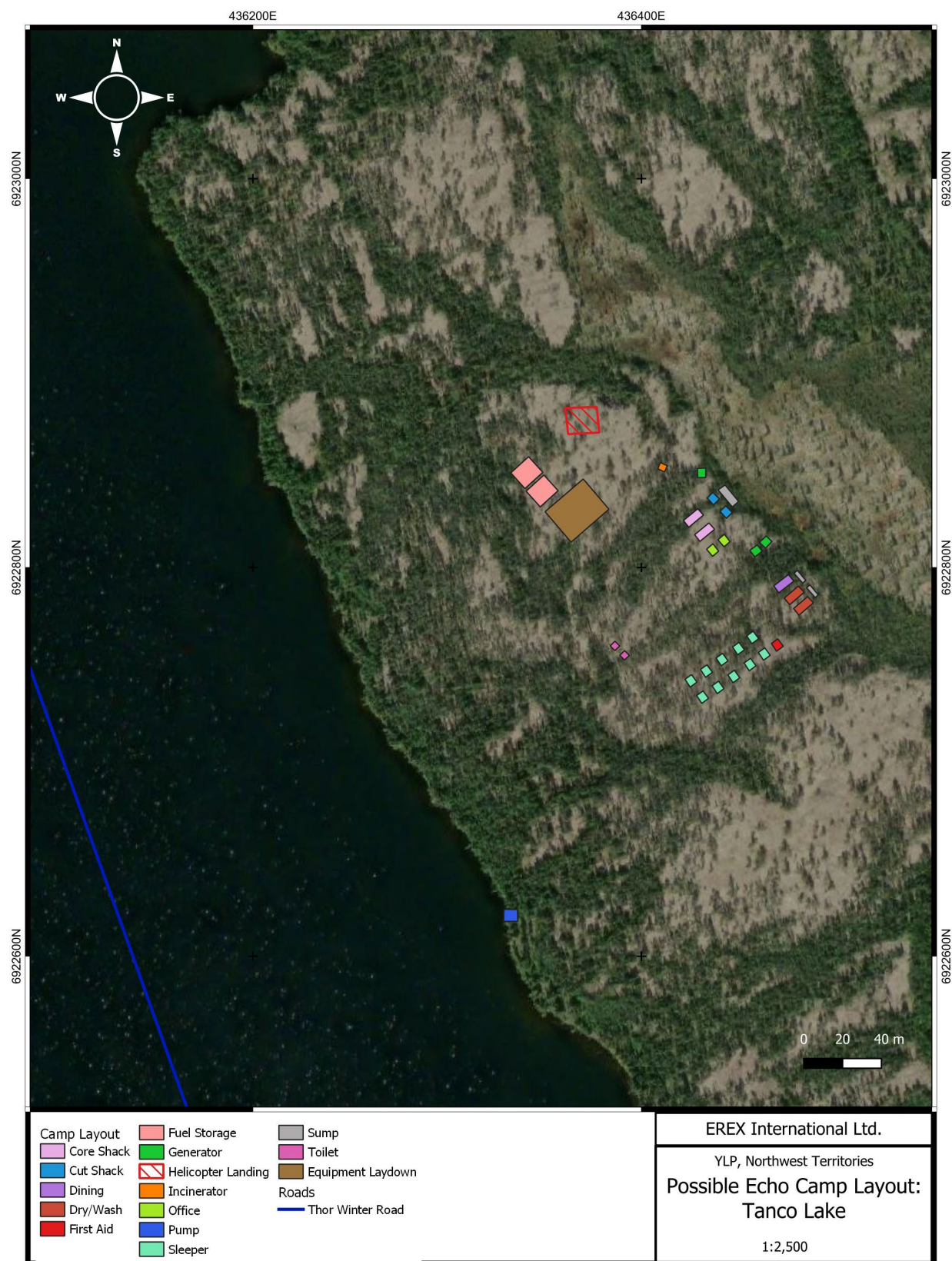


Figure 2: Schematic of possible ECHO Area Camp layout at Tanco Lake

Table 1: Anticipated number and dimensions of camp structures at the ECHO Area Camp including a comparison against the camp infrastructure described previously.

Structure	Previously Described					Adjusted				
	Width (m)	Length (m)	Area (m ²)	Quantity	Total Area (m ²)	Width (m)	Length (m)	Area (m ²)	Quantity	Total Area (m ²)
Sleepers	4.3	4.9	21.1	7	147.7	4.3	4.9	21.1	14	295.4
Kitchen/Dining	4.3	4.9	21.1	1	21.1	4.3	9.8	42.1	2	84.2
Dry/Wash	4.3	9.8	42.1	1	42.1	4.3	9.8	42.1	2	84.2
Office	4.3	4.9	21.1	1	21.1	4.3	4.9	21.1	2	42.2
Cut Shack	4.3	4.9	21.1	1	21.1	4.3	4.9	21.1	2	42.2
Core Shack	4.3	9.8	42.1	1	42.1	4.3	9.8	42.1	1	42.1
Emergency/Warming Shelter	n/a	n/a	n/a	n/a	n/a	4.3	4.9	21.1	1	21.1
Toilet Facilities	n/a	n/a	n/a	n/a	n/a	4.3	4.9	21.1	2	42.2
Generator Shack	n/a	n/a	n/a	n/a	n/a	4.3	4.9	21.1	1	21.1
First Aid Tent	n/a	n/a	n/a	n/a	n/a	4.3	4.9	21.1	1	21.1
Incinerator Shack	n/a	n/a	n/a	n/a	n/a	4.3	4.9	21.1	1	21.1
Pump Shack	n/a	n/a	n/a	n/a	n/a	4	4	16	1	16.0
Maintenance Tents	n/a	n/a	n/a	n/a	n/a	7.3	9.1	66.4	2	132.8
Maintenance Shop (Sea-Can)	n/a	n/a	n/a	n/a	n/a	2.43	6	14.6	1	14.6
Total (m²)					295.2			392.1		880.3
Total (ha)					0.03			0.04		0.09

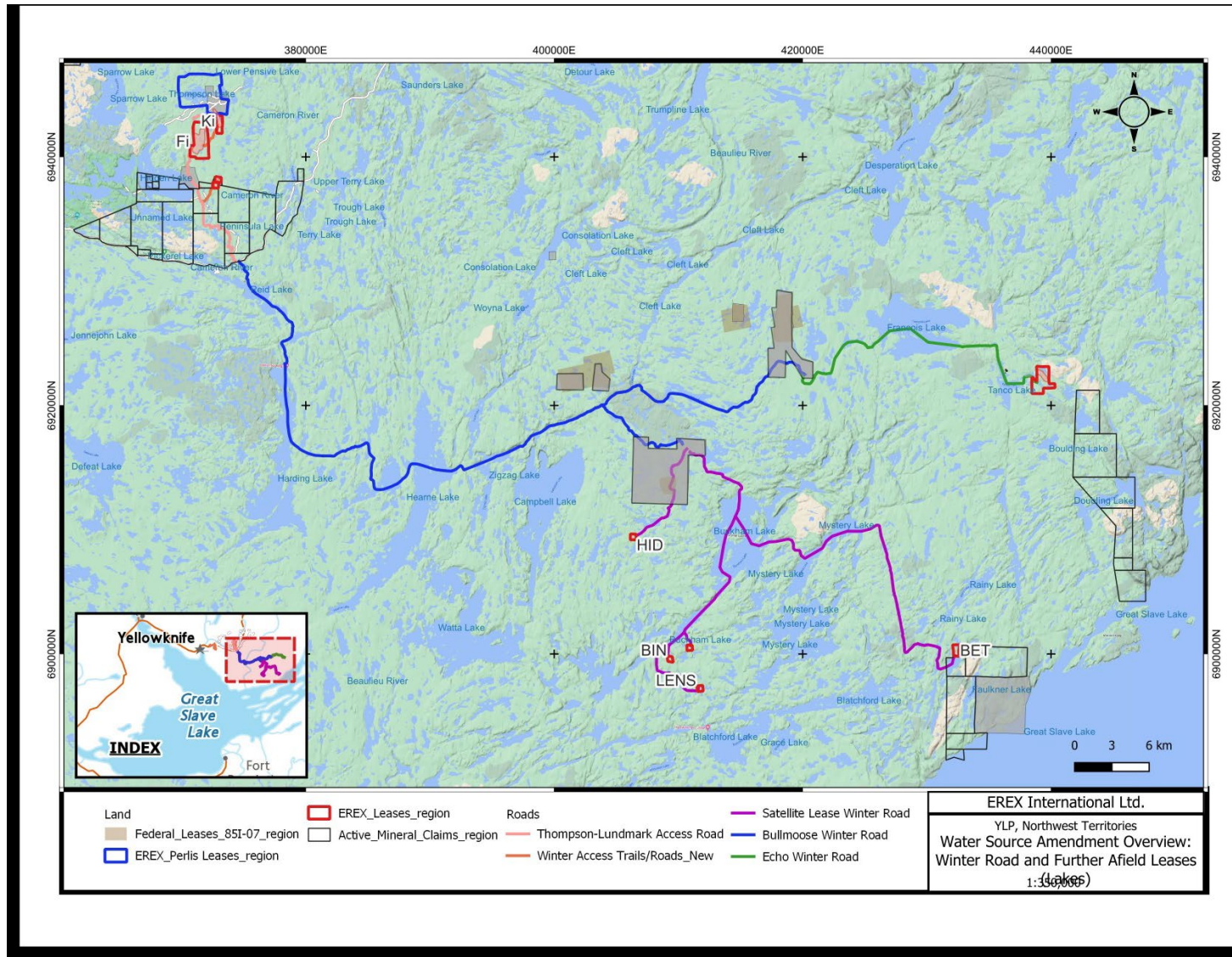


Figure 3: Winter Road route overview (existing and proposed routes)

Table 2: Anticipated number and dimensions of camp structures associated with each fly camp.

Structure	Width (m)	Length (m)	Area (m ²)	Quantity	Total Area (m ²)
Sleepers	4.3	4.9	21.1	3	63.3
Kitchen/Dining	4.3	4.9	21.1	1	21.1
Office	4.3	4.9	21.1	1	21.1
Total (m²)					105.5
Total (ha)					0.01

Table 3: Comparison of the previous and adjusted quantities of fuel on territorial and federal lands.

Type of Fuel	Number of Containers Original	Adjusted	Capacity of Containers	Type of Container	Storage or Staging Location(s)
Federal Land					
Diesel	3	3	25,000 L	Tanks	Camp
Diesel	60	60	205 L	Barrel/Tank	Camp, Remote Caches, Drill Sites
Aviation Fuel	60	60	205 L	Barrel/Tank	Camp, Remote Caches, Drill Sites
Gasoline	10	10	205 L	Barrel/Tank	Camp, Remote Caches, Drill Sites
Propane	40	40	45 kg	100 lb cylinders	Camp
Other ^a	100	100	1 L to 22L	tubes, cans, and pails	Camp, Drill Sites
Territorial Land					
Diesel	62	100	205 L	Barrel/Tank	Camp, Remote Caches, Drill Sites
Aviation Fuel	50	100	205 L	Barrel/Tank	Camp, Remote Caches, Drill Sites
Gasoline	2	15	205 L	Barrel/Tank	Camp, Remote Caches, Drill Sites
Propane	5	15	45 kg	100 lb cylinders	Camp
Other ^a	100	100	1 L to 22 L	tubes, cans, and pails	Camp, Drill Sites

NOTES:

^a various lubricants, including drilling fluids

Table 4: Anticipated equipment list, including a comparison against the equipment list described previously.

No. of Pieces	Type/Description	Size (Weight in t or kg)	Purpose	Comparison to Previously Described Equipment
5	Helicopter - various types/sizes		Mobilization, drill moves, crew transport, camp supplies.	+ 2
3	Fuel storage tanks - 25,000 L each	4 - 5	Bulk fuel storage	no change
9	Unitized, helicopter & bulldozer transportable diamond drill (Longyear LF-70 or similar)	10	Core drilling	+ 2
2	Super Hornet reverse circulation drill or similar tracked RC drill rig	6 - 10	Reverse circulation drilling	+ 1
5	Solids removal equipment + generators	1 - 3	Remove rock cuttings from drill return water	no change
6	Skidder or D-6 Bulldozer	25	Moving drills in winter, drill pad/trail construction	+ 2
6	Water truck	20	For winter road construction and drill pads	+ 2
20	Water pumps	100 kg to 10 kg	Drill and camp water supply, winter road and drill trail construction	+ 10
3	Grader	20	Winter road maintenance & snow removal	+ 2
6	Snow cats	6 - 10	Snow removal, road and drill trail construction & maintenance	+ 4
3	Hagglund BV206 or similar	4 - 6	Crew transport	+ 2
8	ATV's (Polaris Ranger or similar)	300 – 500 kg	Crew transport	+ 2
20	Snow machines	300 kg	Camp and operations support, crew transport	+ 10
14	Pick-up trucks	2.5	Camp and operations support, crew transport	+ 2
6	Core saws (electric)	150 kg	Cut drill core	no change
6	Cut-of saws (gas)	20 kg	Surface rock sampling	no change
3	40 kw diesel generator	800 kg	Camp power	no change
5	20 kw diesel generator	500 kg	Camp power	+ 4
5	10 kw diesel generator	400 kg	Camp power	no change
73	Oil heaters, 75,000 BTU output	15 kg	To heat sleeper tents, dry, kitchen mess, core shack, toilet facility.	+ 27
4	Ice auger	7 kg	Determining lake ice thickness, cutting holes for water supply	+ 1
1	Pionjar pack-sack blast hole drill, gasoline powered or pneumatic jackhammer	45 – 500 kg	Blast holes and trenching	no change
3	Dual chambered Incinerator	400 – 600 kg	Waste management	no change

No. of Pieces	Type/Description	Size (Weight in t or kg)	Purpose	Comparison to Previously Described Equipment
2	Skid Steer	3.5	Camp support	new addition
3	Snow plow	5 - 6	Clearing snow and maintaining roads	new addition



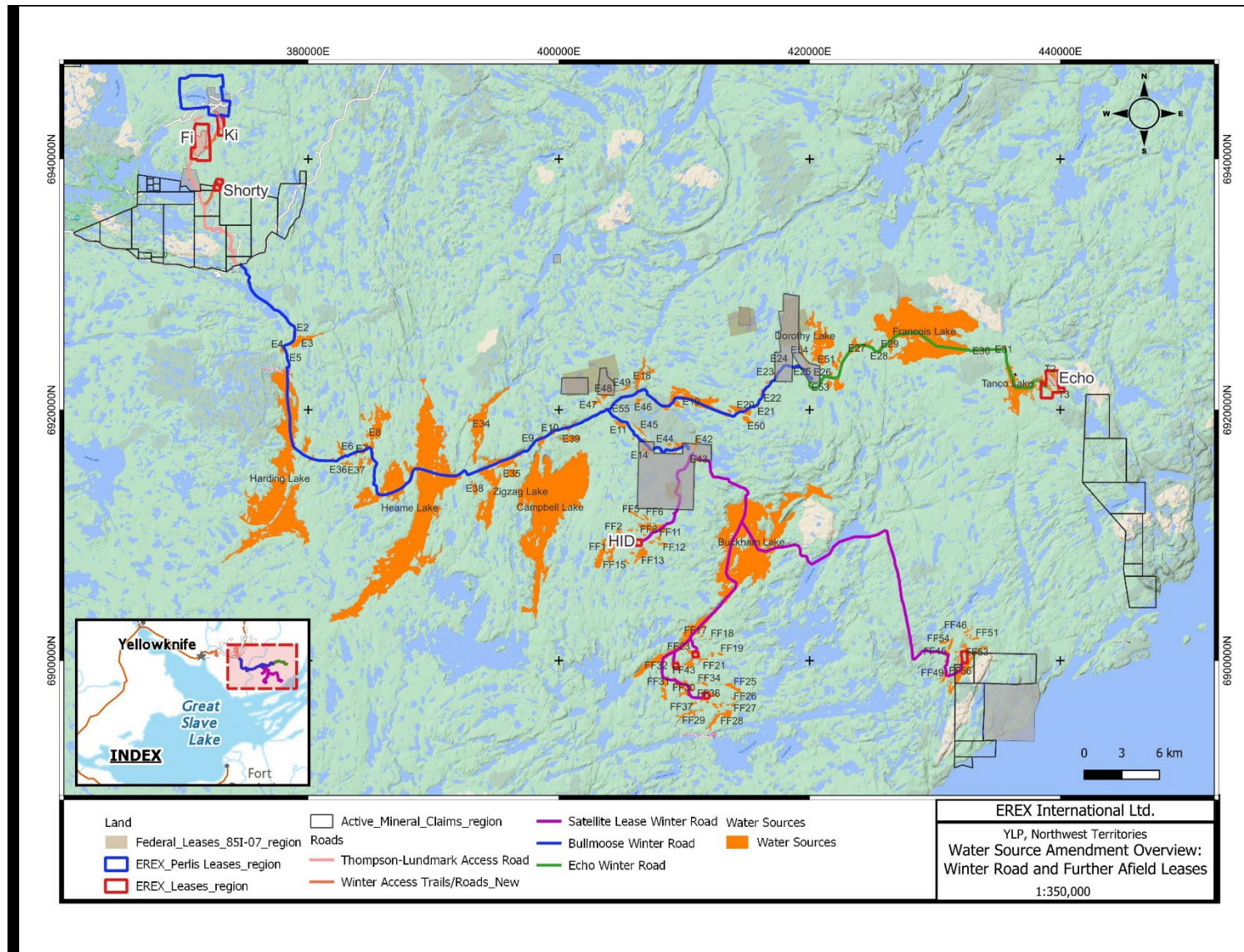


Figure 4: Overview of Proposed Additional Water Sources

Table 5: Proposed additional water sources on territorial lands.

Purpose of Water Use	Name and Type of Water Source	Location (NTS)	Geographic Coordinates		Proposed Water Use Volume/Rate, including units	Jurisdiction
			Lat	Long		
drilling, camp, winter roads, trails, and pads	Buckham Lake	85I-07/02	62.30712	-112.633	<299 m ³ /d	Territorial
winter roads	Campbell Lake	85I-07/02	62.3281	-112.944	<299 m ³ /d	Territorial
drilling, camp, winter roads, trails, and pads	Dorothy Lake	85I-07	62.45168	-112.534	<299 m ³ /d	Federal; Territorial
winter roads	E10	85I-07	62.38078	-112.941	<299 m ³ /d	Territorial
winter roads	E11	85I-07	62.38914	-112.836	<299 m ³ /d	Territorial
winter roads	E12	85I-07	62.37993	-112.811	<299 m ³ /d	Territorial
winter roads	E14	85I-07	62.37166	-112.795	<299 m ³ /d	Federal; Territorial
winter roads, camp	E15	85I-07	62.37377	-112.748	<299 m ³ /d	Federal; Territorial
winter roads	E16	85I-07	62.4089	-112.829	<299 m ³ /d	Territorial
winter roads	E17	85I-07	62.40923	-112.825	<299 m ³ /d	Territorial
winter roads	E18	85I-07	62.424	-112.808	<299 m ³ /d	Territorial
winter roads	E19	85I-07	62.40651	-112.731	<299 m ³ /d	Territorial
winter roads	E2	85I-06	62.44632	-113.344	<299 m ³ /d	Territorial
winter roads	E20	85I-07	62.40098	-112.654	<299 m ³ /d	Territorial
winter roads	E21	85I-07	62.405	-112.629	<299 m ³ /d	Territorial
winter roads	E22	85I-07	62.41459	-112.62	<299 m ³ /d	Territorial
winter roads	E23	85I-07	62.4252	-112.604	<299 m ³ /d	Federal; Territorial
winter roads	E25	85I-07	62.43421	-112.568	<299 m ³ /d	Territorial
winter roads	E26	85I-07	62.42801	-112.516	<299 m ³ /d	Territorial
winter roads	E27	85I-07/08	62.4478	-112.477	<299 m ³ /d	Territorial
winter roads	E28	85I-08	62.44666	-112.45	<299 m ³ /d	Territorial
winter roads	E29	85I-08	62.44687	-112.44	<299 m ³ /d	Territorial
winter roads	E3	85I-06	62.44162	-113.336	<299 m ³ /d	Territorial

Purpose of Water Use	Name and Type of Water Source	Location (NTS)	Geographic Coordinates		Proposed Water Use Volume/Rate, including units	Jurisdiction
			Lat	Long		
winter roads, camp	E30	85I-08	62.44774	-112.285	<299 m ³ /d	Territorial
winter roads	E31	85I-08	62.44915	-112.25	<299 m ³ /d	Territorial
winter roads	E34	85I-06/07	62.38629	-113.054	<299 m ³ /d	Territorial
winter roads	E35	85I-06/07	62.35137	-113.004	<299 m ³ /d	Territorial
winter roads	E36	85I-06	62.35451	-113.258	<299 m ³ /d	Territorial
winter roads	E37	85I-06	62.35449	-113.237	<299 m ³ /d	Territorial
winter roads	E38	85I-06	62.33988	-113.061	<299 m ³ /d	Territorial
winter roads	E39	85I-07	62.37754	-112.915	<299 m ³ /d	Territorial
winter roads	E4	85I-06	62.43419	-113.363	<299 m ³ /d	Territorial
winter roads	E40	85I-07	62.37882	-112.819	<299 m ³ /d	Territorial
winter roads	E41	85I-07	62.37821	-112.8	<299 m ³ /d	Federal; Territorial
winter roads, camp	E42	85I-07	62.37547	-112.723	<299 m ³ /d	Federal; Territorial
winter roads, camp	E43	85I-07	62.36553	-112.717	<299 m ³ /d	Federal; Territorial
winter roads, camp	E44	85I-07	62.37527	-112.763	<299 m ³ /d	Territorial
winter roads	E45	85I-07	62.38478	-112.808	<299 m ³ /d	Territorial
winter roads	E46	85I-07	62.40584	-112.812	<299 m ³ /d	Territorial
winter roads	E47	85I-07	62.40453	-112.876	<299 m ³ /d	Territorial
winter roads	E48	85I-07	62.41006	-112.86	<299 m ³ /d	Federal; Territorial
winter roads	E49	85I-07	62.41478	-112.832	<299 m ³ /d	Territorial
winter roads	E5	85I-06	62.42464	-113.353	<299 m ³ /d	Territorial
winter roads	E50	85I-07	62.39444	-112.644	<299 m ³ /d	Territorial
winter roads	E51	85I-07	62.43519	-112.51	<299 m ³ /d	Territorial
winter roads	E52	85I-07/08	62.44074	-112.504	<299 m ³ /d	Territorial
winter roads	E53	85I-07	62.42143	-112.519	<299 m ³ /d	Territorial

Purpose of Water Use	Name and Type of Water Source	Location (NTS)	Geographic Coordinates		Proposed Water Use Volume/Rate, including units	Jurisdiction
			Lat	Long		
drilling, camp, winter roads, trails, and pads	E54	85I-07	62.4412	-112.559	<299 m ³ /d	Federal; Territorial
winter roads	E55	85I-07	62.40205	-112.853	<299 m ³ /d	Territorial
winter roads	E6	85I-06	62.3626	-113.268	<299 m ³ /d	Territorial
winter roads	E7	85I-06	62.36125	-113.246	<299 m ³ /d	Territorial
winter roads	E8	85I-06	62.37762	-113.217	<299 m ³ /d	Territorial
winter roads	E9	85I-07	62.37297	-112.972	<299 m ³ /d	Territorial
drilling, camp, winter roads, trails, and pads	FF1	85I-07	62.2968	-112.854	<299 m ³ /d	Territorial
drilling, camp, winter roads, trails, and pads	FF10	85I-07	62.30512	-112.786	<299 m ³ /d	Territorial
drilling, camp, winter roads, trails, and pads	FF11	85I-07	62.3082	-112.774	<299 m ³ /d	Territorial
drilling, camp, winter roads, trails, and pads	FF12	85I-07	62.30392	-112.769	<299 m ³ /d	Territorial
drilling, camp, winter roads, trails, and pads	FF13	85I-07	62.29614	-112.802	<299 m ³ /d	Territorial
drilling, camp, winter roads, trails, and pads	FF14	85I-07	62.29677	-112.815	<299 m ³ /d	Territorial
drilling, camp, winter roads, trails, and pads	FF15	85I-07	62.29062	-112.824	<299 m ³ /d	Territorial
drilling, camp, winter roads, trails, and pads	FF17	85I-02	62.2388	-112.705	<299 m ³ /d	Territorial
drilling, camp, winter roads, trails, and pads	FF18	85I-02	62.2368	-112.691	<299 m ³ /d	Territorial
drilling, camp, winter roads, trails, and pads	FF19	85I-02	62.2263	-112.676	<299 m ³ /d	Territorial
drilling, camp, winter roads, trails, and pads	FF2	85I-07	62.31148	-112.838	<299 m ³ /d	Territorial
drilling, camp, winter roads, trails, and pads	FF20	85I-02	62.22594	-112.688	<299 m ³ /d	Territorial
drilling, camp, winter roads, trails, and pads	FF21	85I-02	62.22213	-112.703	<299 m ³ /d	Territorial
drilling, camp, winter roads, trails, and pads	FF22	85I-02	62.21851	-112.723	<299 m ³ /d	Territorial
drilling, camp, winter roads, trails, and pads	FF23	85I-02	62.22715	-112.721	<299 m ³ /d	Territorial
drilling, camp, winter roads, trails, and pads	FF24	85I-02	62.22541	-112.735	<299 m ³ /d	Territorial
drilling, camp, winter roads, trails, and pads	FF25	85I-02	62.20269	-112.654	<299 m ³ /d	Territorial
drilling, camp, winter roads, trails, and pads	FF26	85I-02	62.19443	-112.654	<299 m ³ /d	Territorial

Purpose of Water Use	Name and Type of Water Source	Location (NTS)	Geographic Coordinates		Proposed Water Use Volume/Rate, including units	Jurisdiction
			Lat	Long		
drilling, camp, winter roads, trails, and pads	FF27	85I-02	62.19009	-112.654	<299 m ³ /d	Territorial
drilling, camp, winter roads, trails, and pads	FF28	85I-02	62.18076	-112.673	<299 m ³ /d	Territorial
drilling, camp, winter roads, trails, and pads	FF29	85I-02	62.18265	-112.723	<299 m ³ /d	Territorial
drilling, camp, winter roads, trails, and pads	FF3	85I-07	62.31318	-112.819	<299 m ³ /d	Territorial
drilling, camp, winter roads, trails, and pads	FF30	85I-02	62.20177	-112.73	<299 m ³ /d	Territorial
drilling, camp, winter roads, trails, and pads	FF31	85I-02	62.2015	-112.76	<299 m ³ /d	Territorial
drilling, camp, winter roads, trails, and pads	FF32	85I-02	62.21291	-112.764	<299 m ³ /d	Territorial
drilling, camp, winter roads, trails, and pads	FF33	85I-02	62.20917	-112.699	<299 m ³ /d	Territorial
drilling, camp, winter roads, trails, and pads	FF34	85I-02	62.20472	-112.7	<299 m ³ /d	Territorial
drilling, camp, winter roads, trails, and pads	FF35	85I-02	62.19695	-112.684	<299 m ³ /d	Territorial
drilling, camp, winter roads, trails, and pads	FF36	85I-02	62.1938	-112.7	<299 m ³ /d	Territorial
drilling, camp, winter roads, trails, and pads	FF37	85I-02	62.19036	-112.715	<299 m ³ /d	Territorial
drilling, camp, winter roads, trails, and pads	FF38	85I-02	62.18567	-112.702	<299 m ³ /d	Territorial
drilling, camp, winter roads, trails, and pads	FF39	85I-02	62.18984	-112.682	<299 m ³ /d	Territorial
drilling, camp, winter roads, trails, and pads	FF4	85I-07	62.31322	-112.809	<299 m ³ /d	Territorial
drilling, camp, winter roads, trails, and pads	FF40	85I-02	62.18537	-112.676	<299 m ³ /d	Territorial
drilling, camp, winter roads, trails, and pads	FF41	85I-02	62.19013	-112.672	<299 m ³ /d	Territorial
drilling, camp, winter roads, trails, and pads	FF42	85I-02	62.18999	-112.662	<299 m ³ /d	Territorial
drilling, camp, winter roads, trails, and pads	FF43	85I-02	62.21843	-112.74	<299 m ³ /d	Territorial
drilling, camp, winter roads, trails, and pads	FF44	85I-01	62.22587	-112.314	<299 m ³ /d	Territorial
drilling, camp, winter roads, trails, and pads	FF45	85I-01	62.23014	-112.328	<299 m ³ /d	Territorial
drilling, camp, winter roads, trails, and pads	FF46	85I-01/08	62.24706	-112.297	<299 m ³ /d	Territorial
drilling, camp, winter roads, trails, and pads	FF47	85I-01	62.23189	-112.314	<299 m ³ /d	Territorial
drilling, camp, winter roads, trails, and pads	FF48	85I-01	62.24374	-112.298	<299 m ³ /d	Territorial

Purpose of Water Use	Name and Type of Water Source	Location (NTS)	Geographic Coordinates		Proposed Water Use Volume/Rate, including units	Jurisdiction
			Lat	Long		
drilling, camp, winter roads, trails, and pads	FF49	85I-01	62.22106	-112.331	<299 m ³ /d	Territorial
drilling, camp, winter roads, trails, and pads	FF5	85I-07	62.32438	-112.812	<299 m ³ /d	Territorial
drilling, camp, winter roads, trails, and pads	FF50	85I-01	62.23856	-112.333	<299 m ³ /d	Territorial
drilling, camp, winter roads, trails, and pads	FF51	85I-01	62.24165	-112.285	<299 m ³ /d	Territorial
drilling, camp, winter roads, trails, and pads	FF52	85I-01	62.22505	-112.33	<299 m ³ /d	Territorial
drilling, camp, winter roads, trails, and pads	FF53	85I-01	62.23408	-112.3	<299 m ³ /d	Territorial
drilling, camp, winter roads, trails, and pads	FF54	85I-01	62.23722	-112.323	<299 m ³ /d	Territorial
drilling, camp, winter roads, trails, and pads	FF55	85I-01	62.22662	-112.31	<299 m ³ /d	Territorial
drilling, camp, winter roads, trails, and pads	FF56	85I-01	62.21839	-112.307	<299 m ³ /d	Territorial
drilling, camp, winter roads, trails, and pads	FF57	85I-01	62.24275	-112.293	<299 m ³ /d	Territorial
drilling, camp, winter roads, trails, and pads	FF58	85I-01	62.2413	-112.297	<299 m ³ /d	Territorial
drilling, camp, winter roads, trails, and pads	FF6	85I-07	62.32268	-112.796	<299 m ³ /d	Territorial
drilling, camp, winter roads, trails, and pads	FF7	85I-07	62.3153	-112.783	<299 m ³ /d	Territorial
drilling, camp, winter roads, trails, and pads	FF8	85I-07	62.30995	-112.797	<299 m ³ /d	Territorial
drilling, camp, winter roads, trails, and pads	FF9	85I-07	62.3069	-112.797	<299 m ³ /d	Territorial
drilling, camp, winter roads, trails, and pads	Francois Lake	85I-08	62.46073	-112.373	<299 m ³ /d	Territorial
winter roads	Harding Lake	85I-06	62.34219	-113.361	<299 m ³ /d	Territorial
winter roads, camp	Hearne Lake	85I-06/03	62.32448	-113.16	<299 m ³ /d	Territorial
drilling, camp, winter roads, trails, and pads*	T2	85I-08	62.43113	-112.193	<299 m ³ /d	Territorial
drilling, camp, winter roads, trails, and pads**	T3	85I-08	62.41929	-112.162	<299 m ³ /d	Territorial
drilling, camp, winter roads, trails, and pads*	Tanco Lake	85I-08	62.42667	-112.188	<299 m ³ /d	Territorial
winter roads	Zigzag Lake	85I-06/07	62.34231	-113.033	<299 m ³ /d	Territorial
winter roads	FF61	85I-07	62.33435	-112.743	<299 m ³ /d	Federal; Territorial
winter roads	FF62	85I-07	62.32123	-112.752	<299 m ³ /d	Territorial

Purpose of Water Use	Name and Type of Water Source	Location (NTS)	Geographic Coordinates		Proposed Water Use Volume/Rate, including units	Jurisdiction
			Lat	Long		
winter roads	FF63	85I-07	62.36571	-112.683	<299 m ³ /d	Federal; Territorial
winter roads	FF64	85I-07	62.35515	-112.695	<299 m ³ /d	Territorial
winter roads	FF65	85I-07	62.3537	-112.669	<299 m ³ /d	Territorial
winter roads	FF66	85I-07	62.34531	-112.662	<299 m ³ /d	Territorial
winter roads	FF67	85I-07	62.34491	-112.651	<299 m ³ /d	Territorial
winter roads	FF68	85I-07	62.29444	-112.58	<299 m ³ /d	Territorial
winter roads	FF69	85I-02	62.21211	-112.513	<299 m ³ /d	Territorial
winter roads	FF70	85I-01	62.20489	-112.475	<299 m ³ /d	Territorial
winter roads	FF71	85I-01	62.20915	-112.446	<299 m ³ /d	Territorial
winter roads	FF72	85I-01	62.20899	-112.36	<299 m ³ /d	Territorial
winter roads	Mystery Lake	85I-01/02/07/08	62.25408	-112.537	<299 m ³ /d	Territorial
winter roads	Blachford Lake	85I-01/02/	62.17553	-112.547	<299 m ³ /d	Territorial

*added winter road, trails, and pads to purpose of water use

**added camp, winter road, trails, and pads to purpose of water use

Table 6: Proposed additional water sources on federal lands.

Purpose of Water Use	Name and Type of Water Source	Location (NTS)	Geographic Coordinates		Proposed Water Use Volume/Rate, including units	Jurisdiction
			Lat	Long		
drilling, camp, winter roads, trails, and pads	Dorothy Lake	85I-07	62.45168	-112.534		Federal; Territorial
winter roads	E13	85I-07	62.37558	-112.8		Federal
winter roads	E14	85I-07	62.37166	-112.795		Federal; Territorial
winter roads, camp	E15	85I-07	62.37377	-112.748		Federal; Territorial
winter roads	E23	85I-07	62.4252	-112.604		Federal; Territorial
winter roads	E24	85I-07	62.43489	-112.583		Federal
winter roads	E41	85I-07	62.37821	-112.8		Federal; Territorial
winter roads, camp	E42	85I-07	62.37547	-112.723		Federal; Territorial
winter roads, camp	E43	85I-07	62.36553	-112.717		Federal; Territorial
winter roads	E48	85I-07	62.41006	-112.86		Federal; Territorial
drilling, camp, winter roads, trails, and pads	E54	85I-07	62.4412	-112.559		Federal; Territorial
winter roads	FF59	85I-07	62.3537	-112.755		Federal
winter roads	FF60	85I-07	62.35252	-112.744		Federal
winter roads	FF61	85I-07	62.33435	-112.743		Federal; Territorial
winter roads	FF63	85I-07	62.36571	-112.683		Federal; Territorial

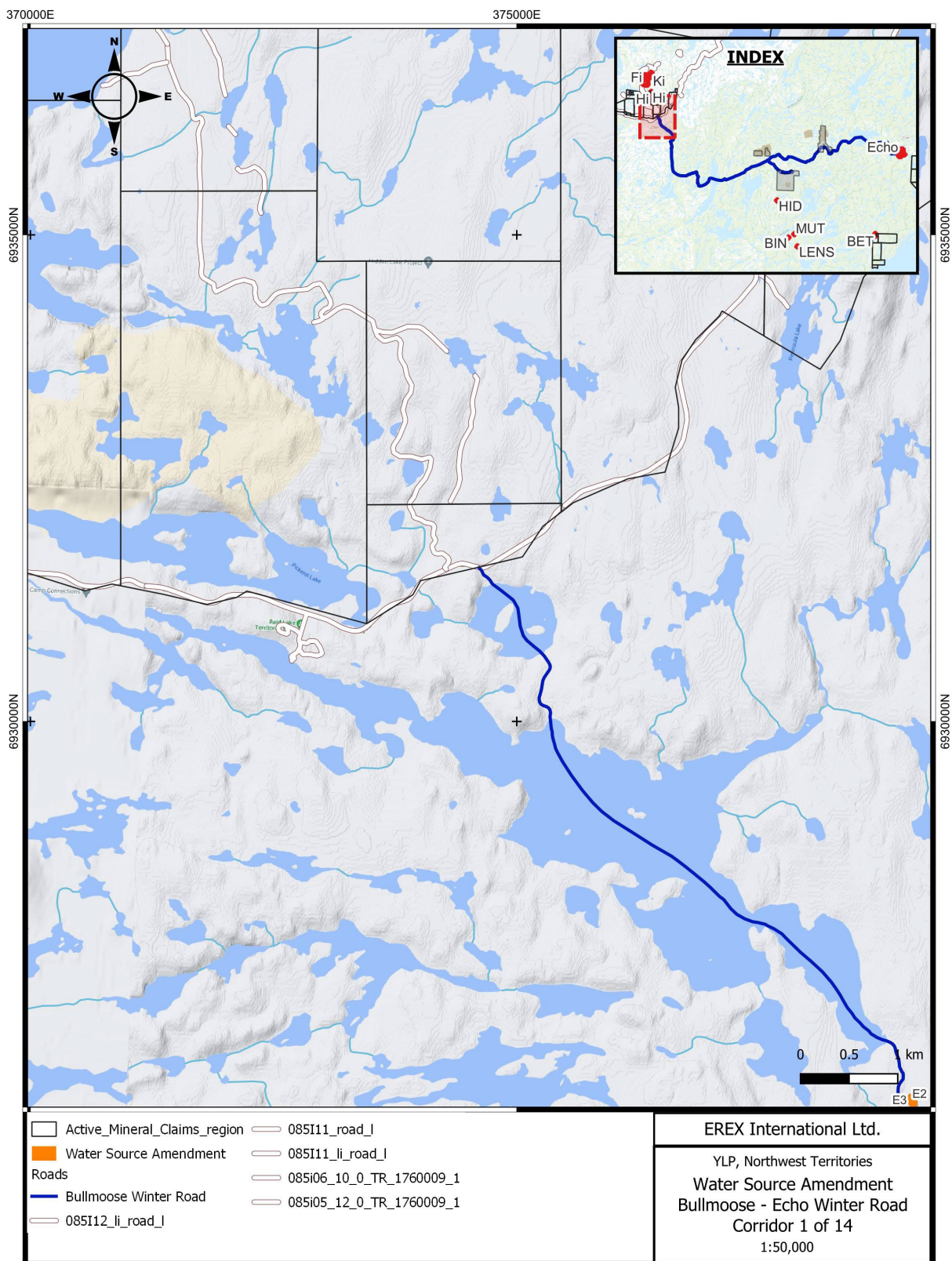
*added winter road, trails, and pads to purpose of water use

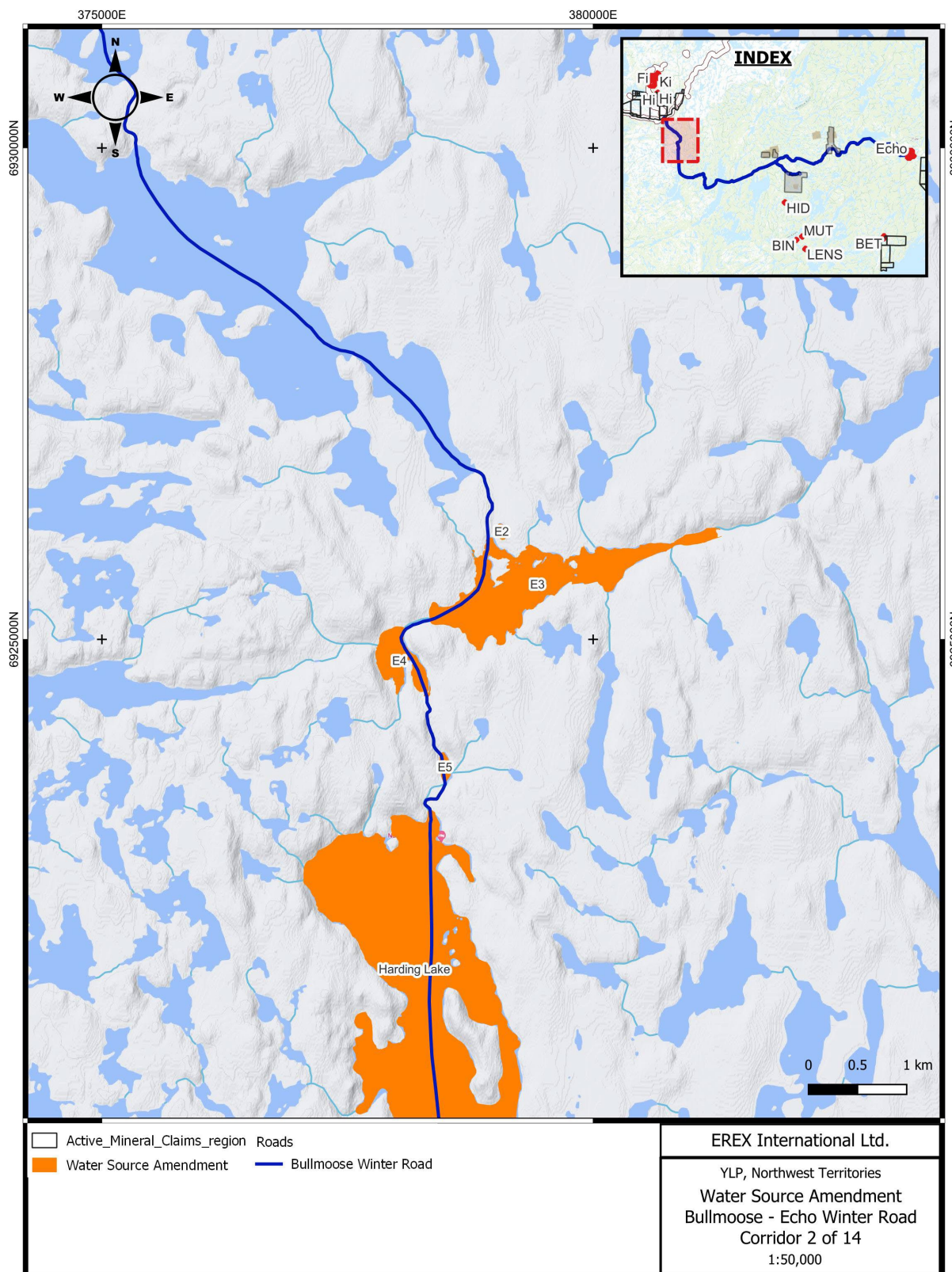
**added camp, winter road, trails, and pads to purpose of water use

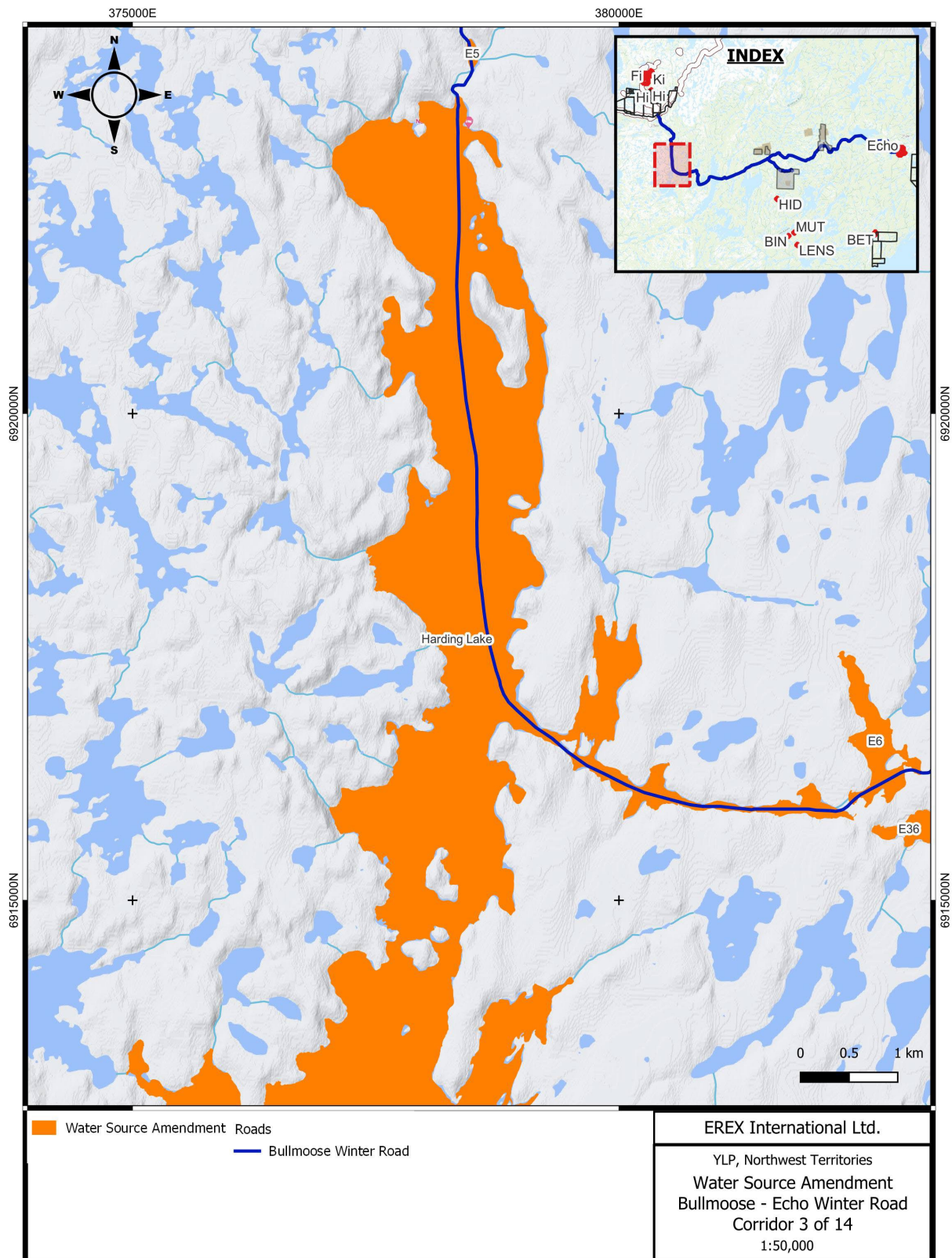
Table 7: Anticipated number and dimensions of camp structures at the Hidden Lake Camp including a comparison against the camp infrastructure described previously.

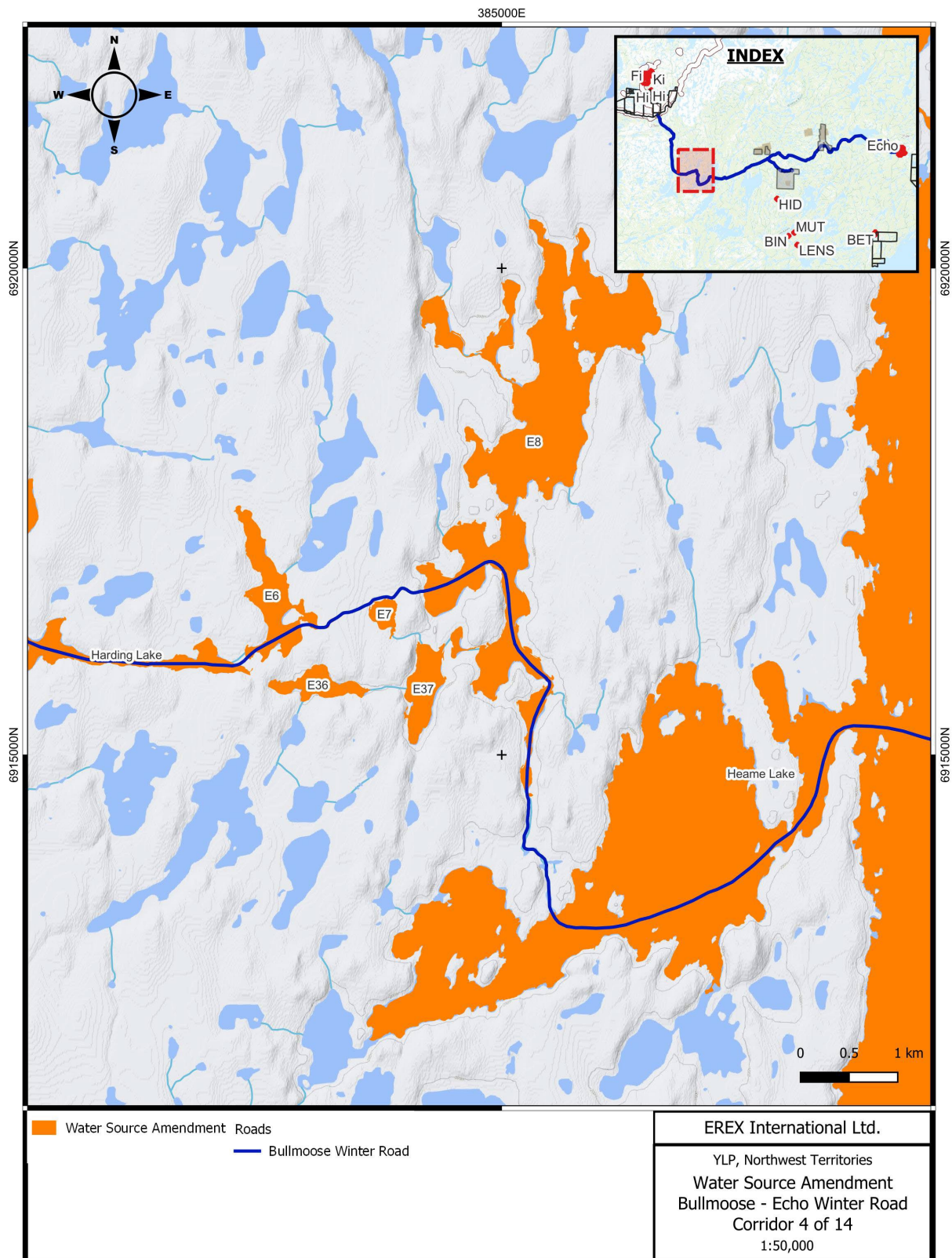
Structure	Width (m)	Length (m)	Area (m ²)	Quantity		Total Area (m ²)
				Original	Adjusted	
Sleepers	4.3	4.9	21.07	18	20	421.40
First Aid Tent	4.3	4.9	21.07	1	1	21.07
Kitchen/Dining	4.3	9.8	42.14	2	2	84.28
Men's Dry	4.3	9.8	42.14	1	1	42.14
Women's Dry	4.3	6.1	26.23	2	2	52.46
Office	4.3	4.9	21.07	2	2	42.14
Core Shack	4.3	9.8	42.14	3	3	126.42
Cut Shack	4.3	4.9	21.07	3	3	63.21
Toilet Facilities	4.3	4.9	21.07	2	2	42.14
Generator Shack	3.7	4.9	18.13	3	3	54.39
Incinerator Shack	4.3	4.9	21.1	n/a	1	21.07
Pump Shack	4	4	16.0	n/z	1	16.00
Maintenance Tents	7.3	9.1	66.4	n/a	2	132.86
Maintenance Shop (Sea-Can)	2.43	6	14.6	n/a	1	14.60
Total (m²)						1134.18
Total (ha)						0.11

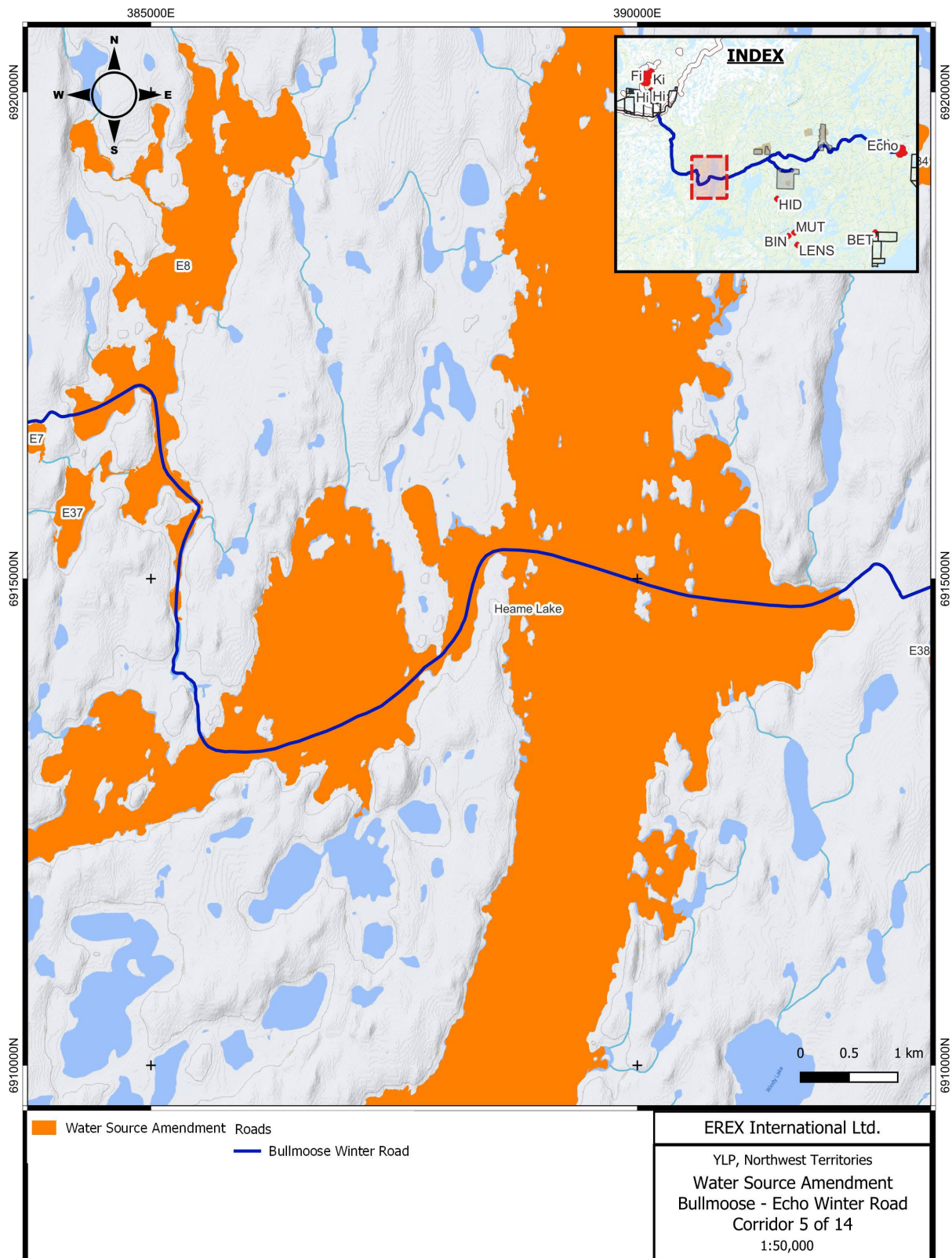
Appendix A: Large Scale Maps of the Existing and Proposed Winter Road Route and Associated Water Sources

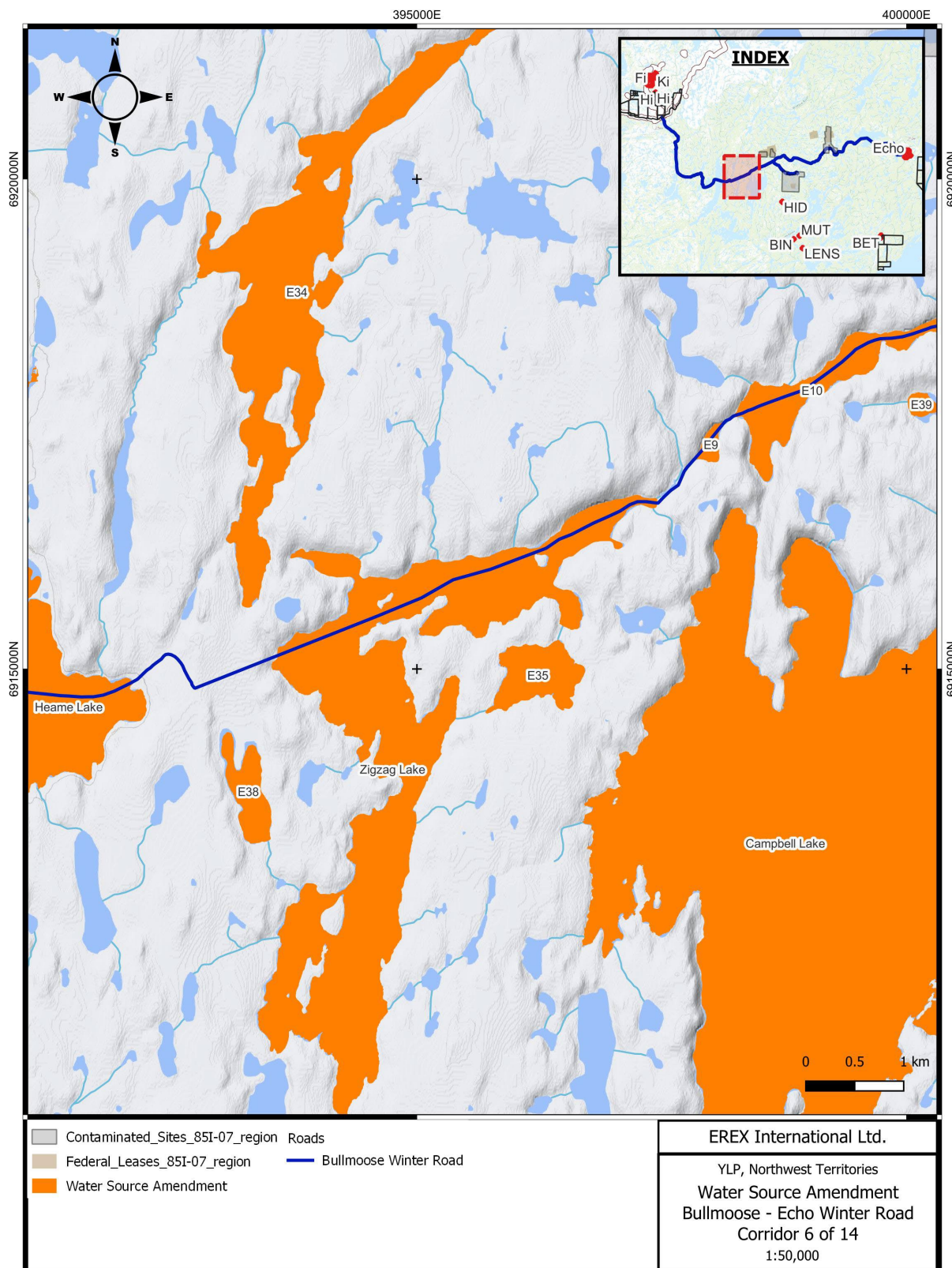


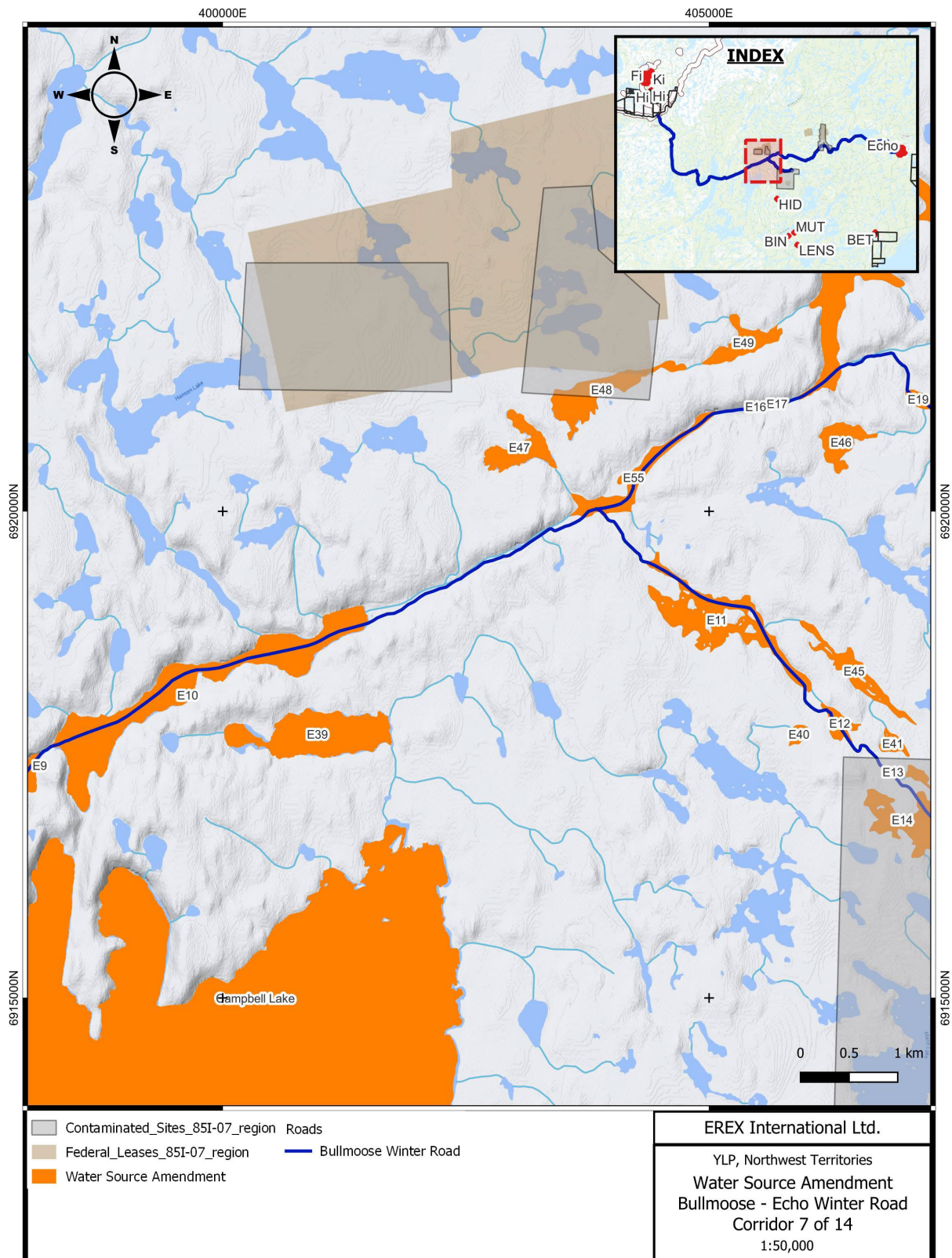


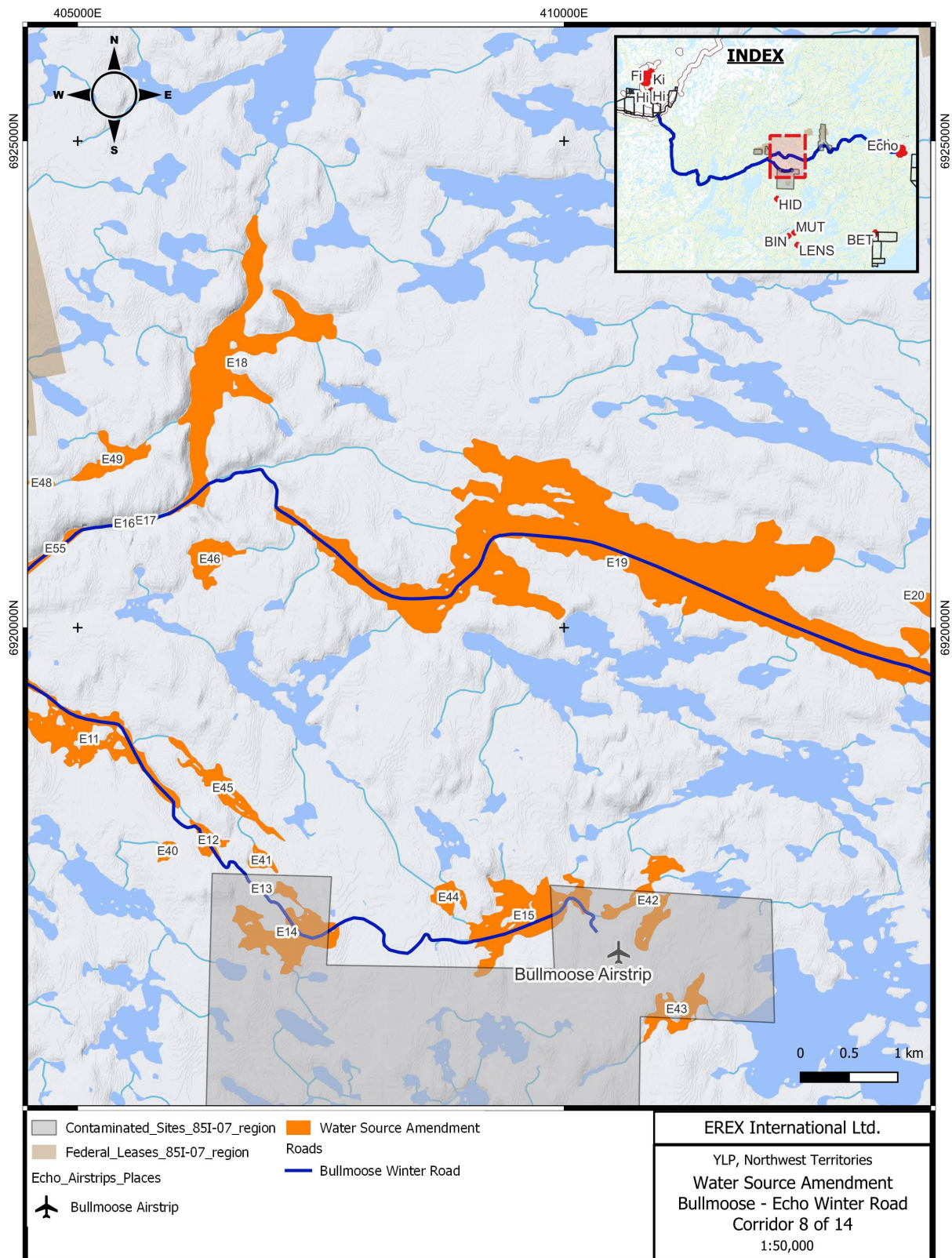


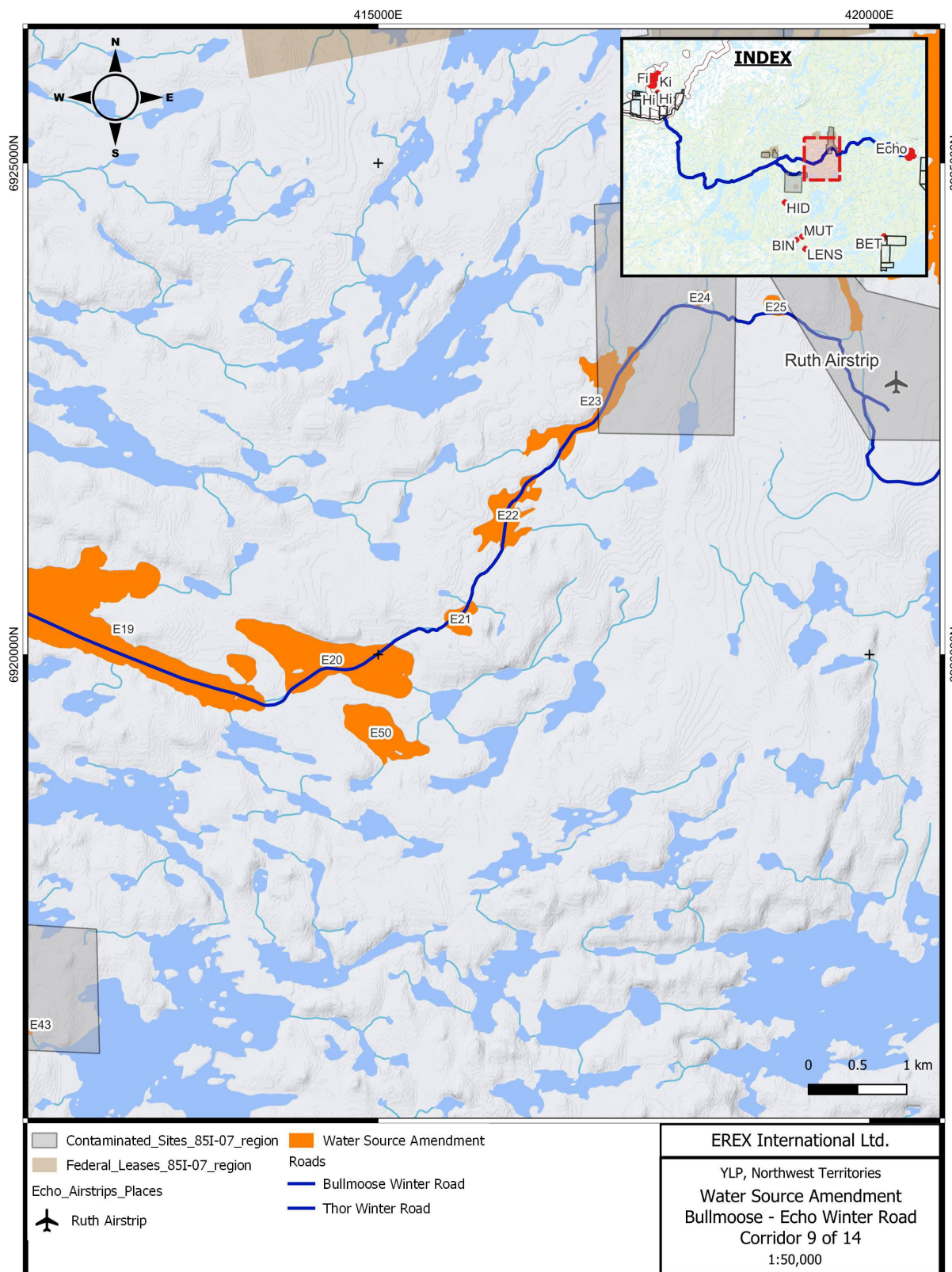


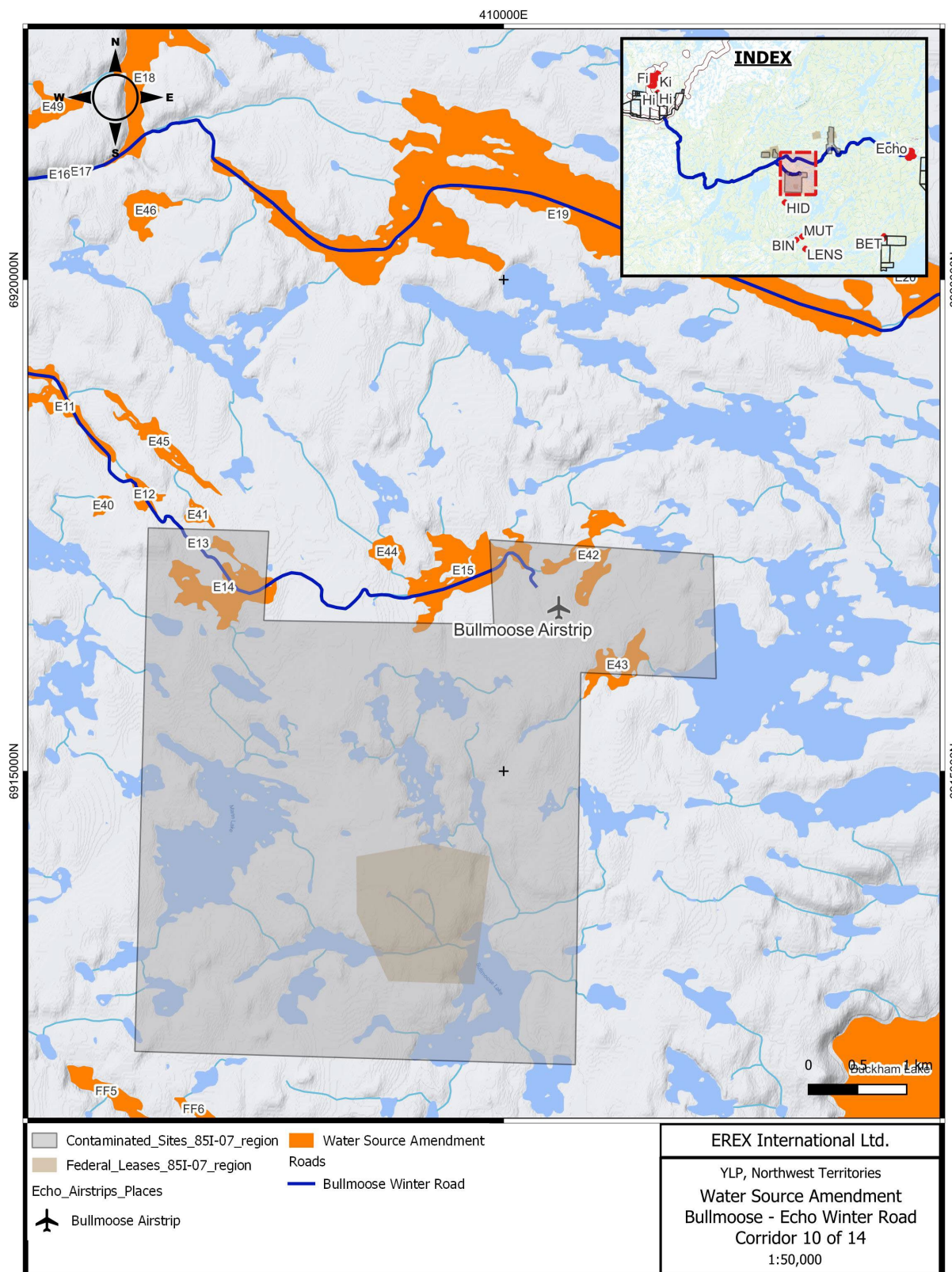


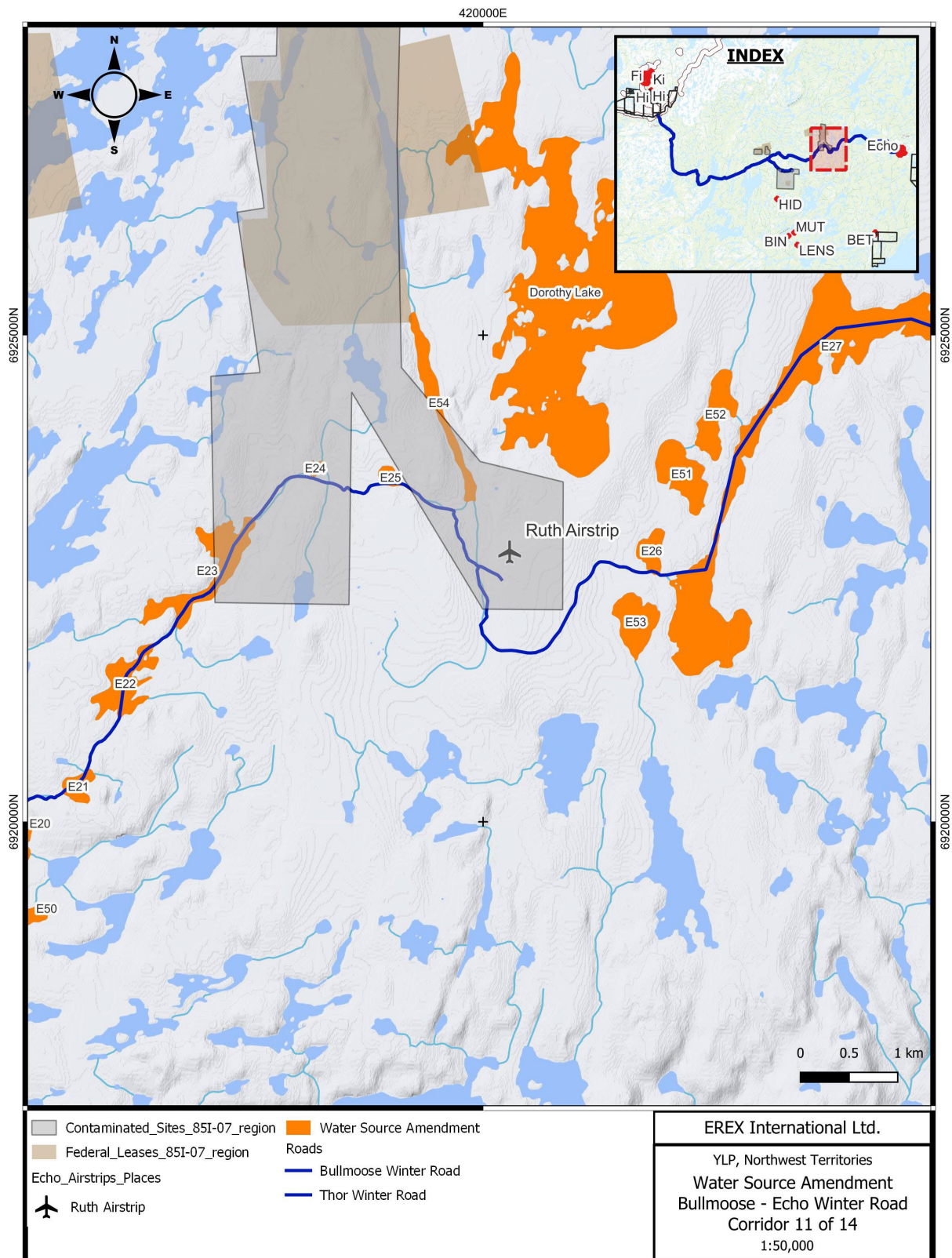


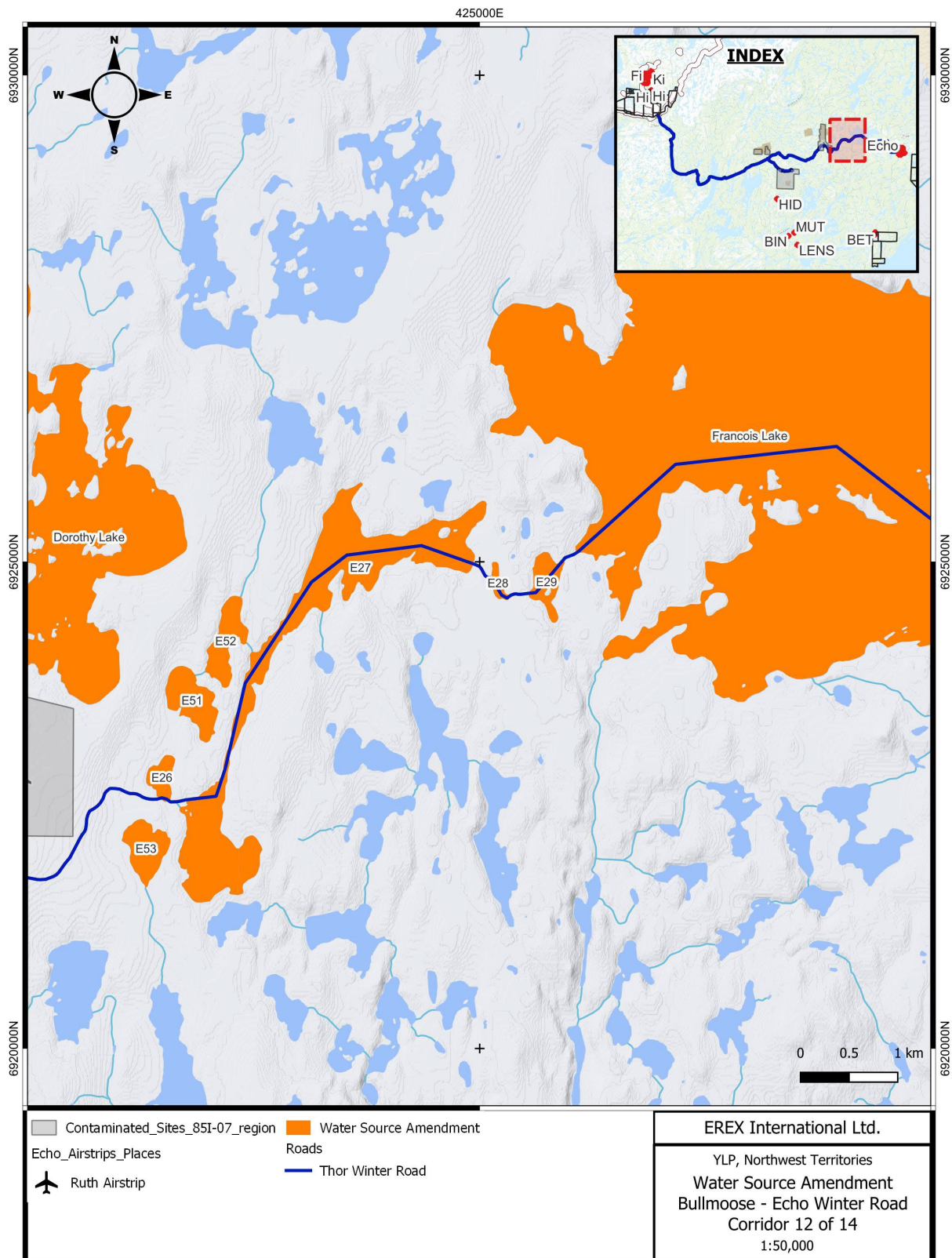


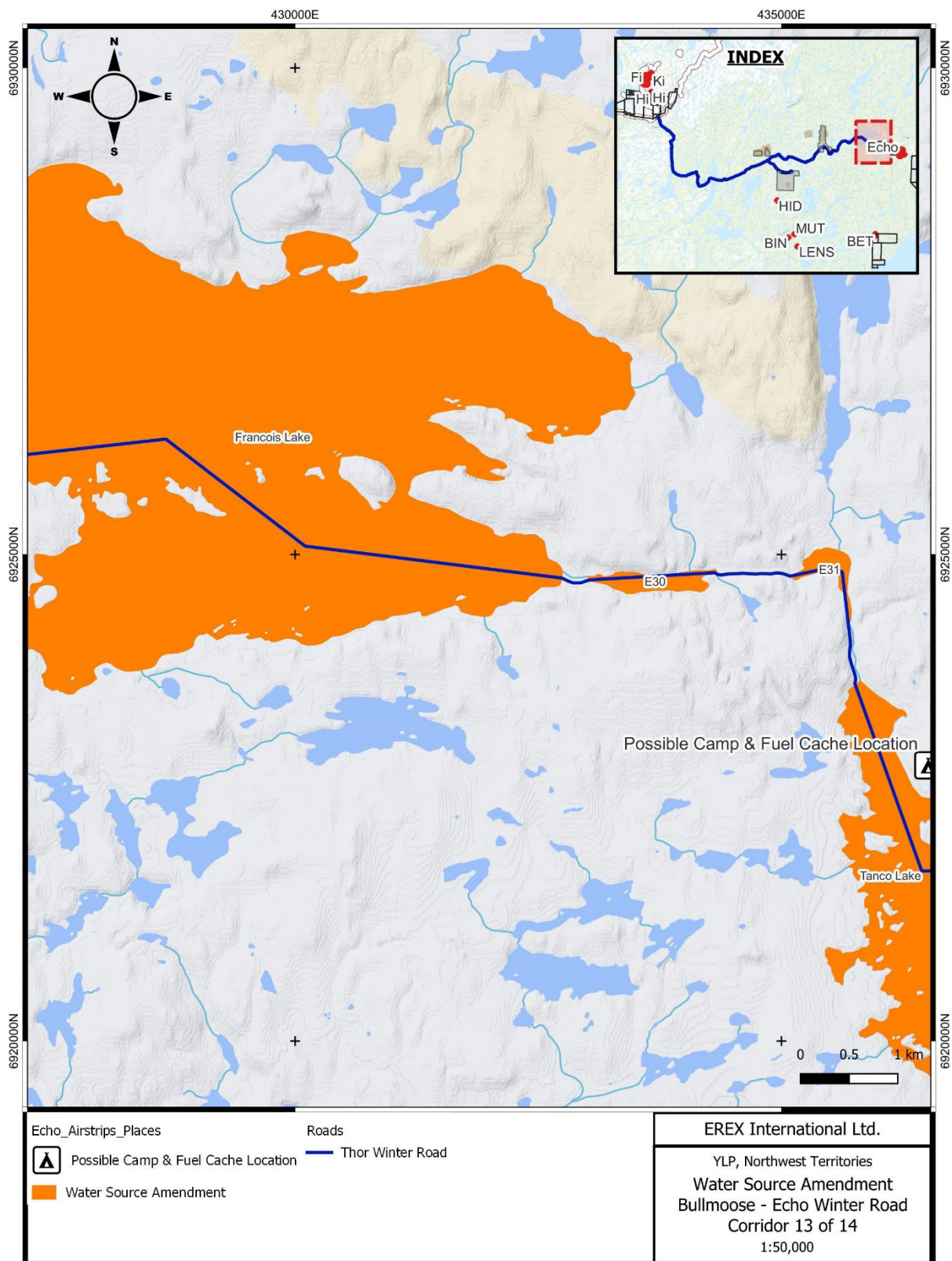


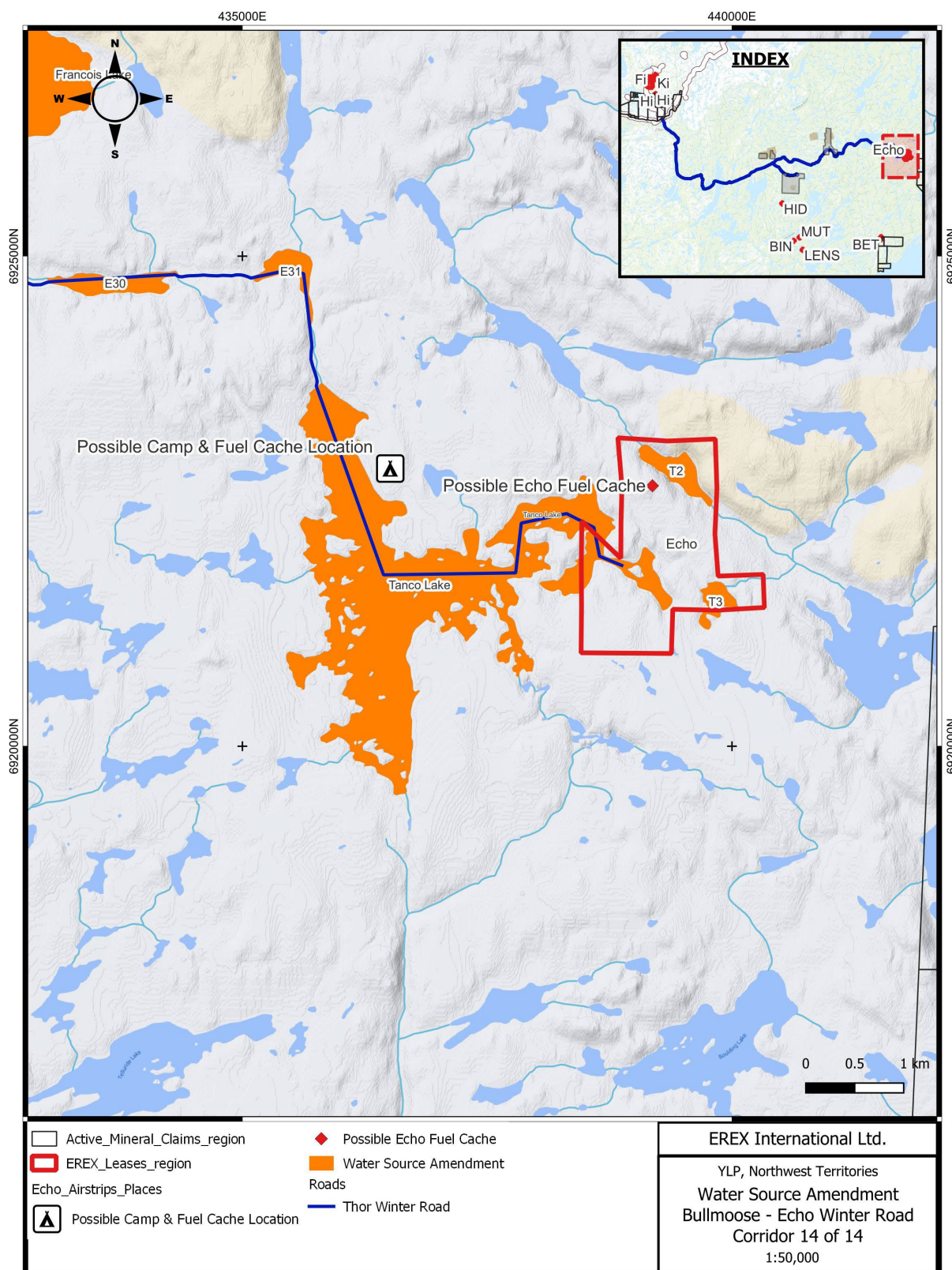


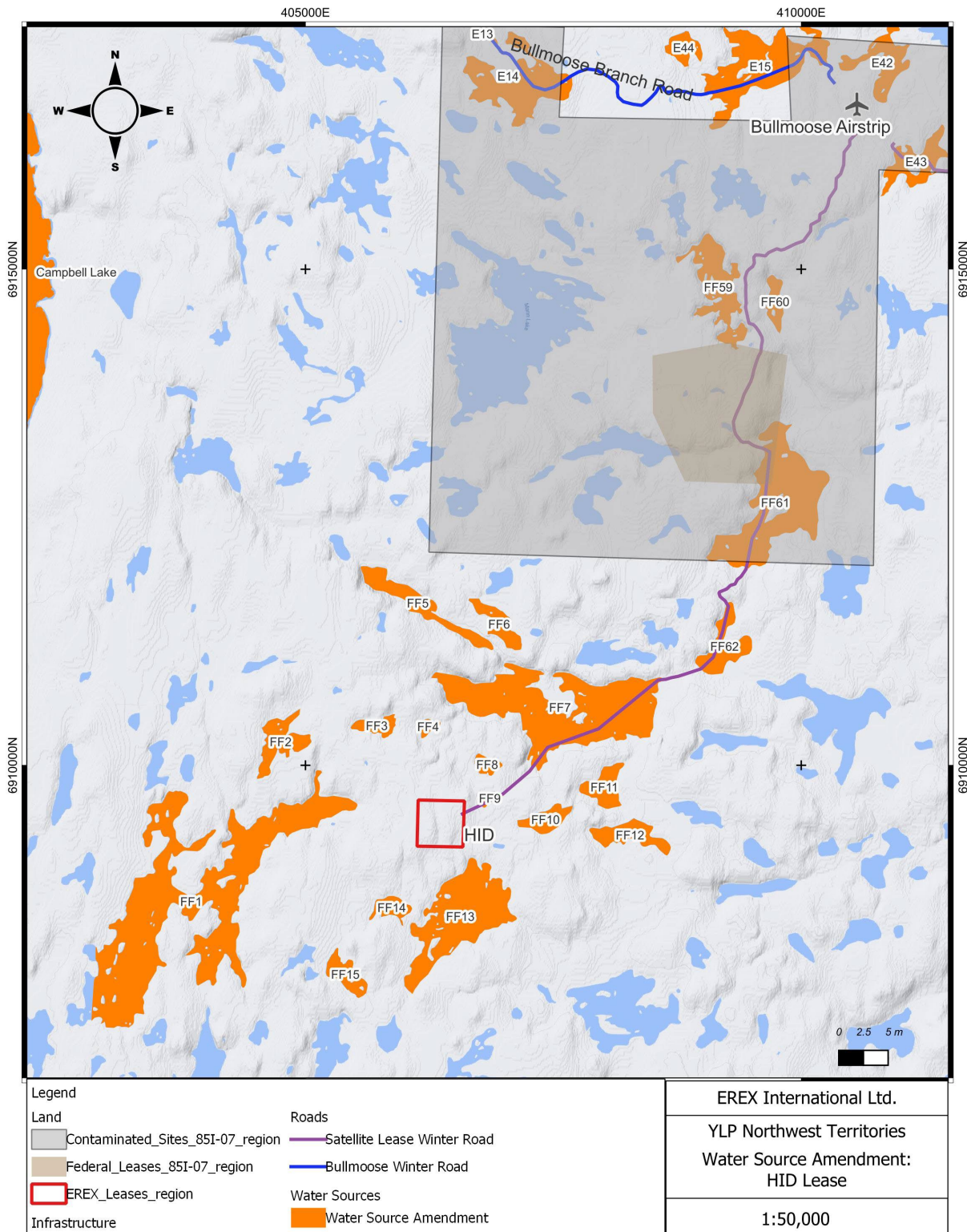


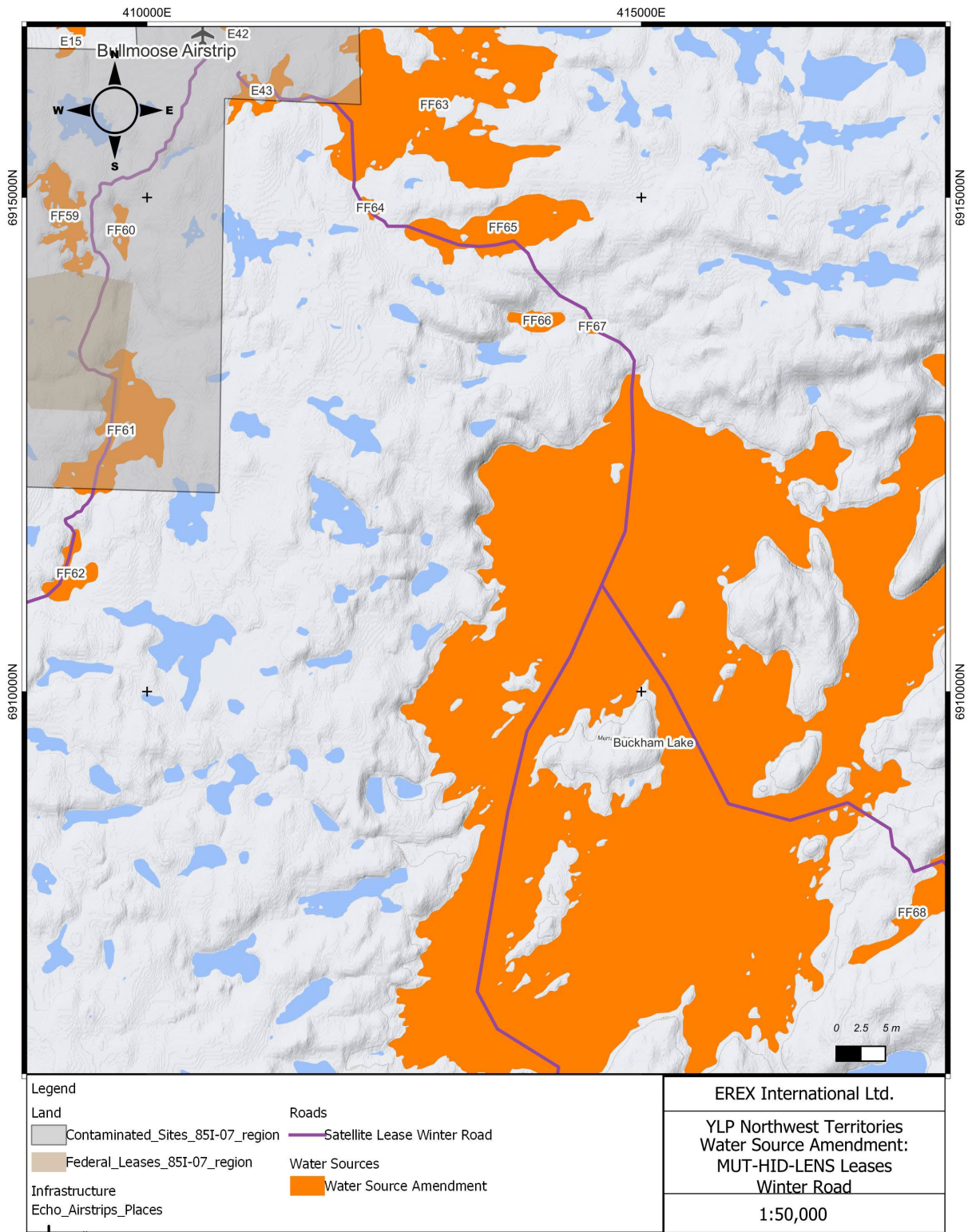


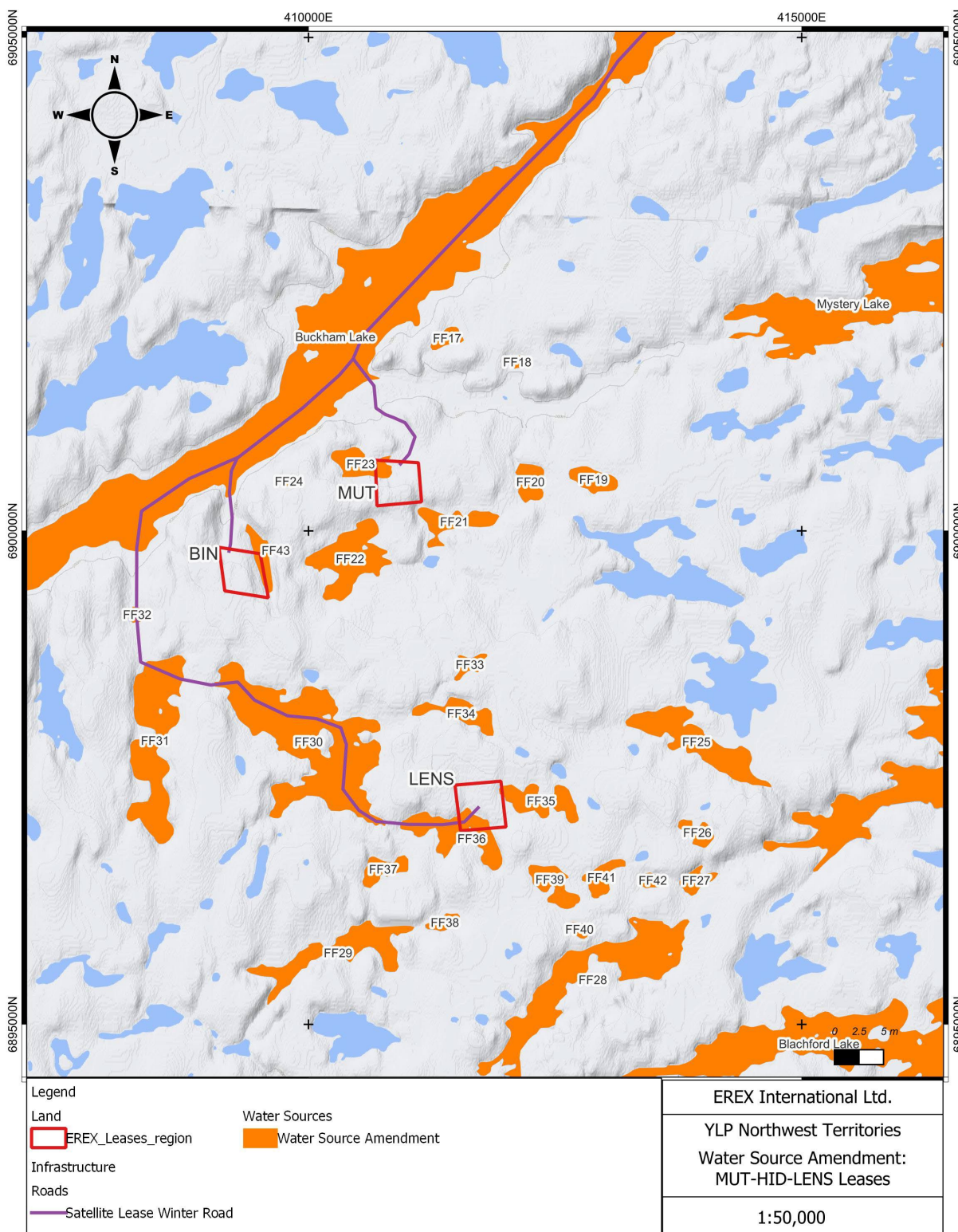


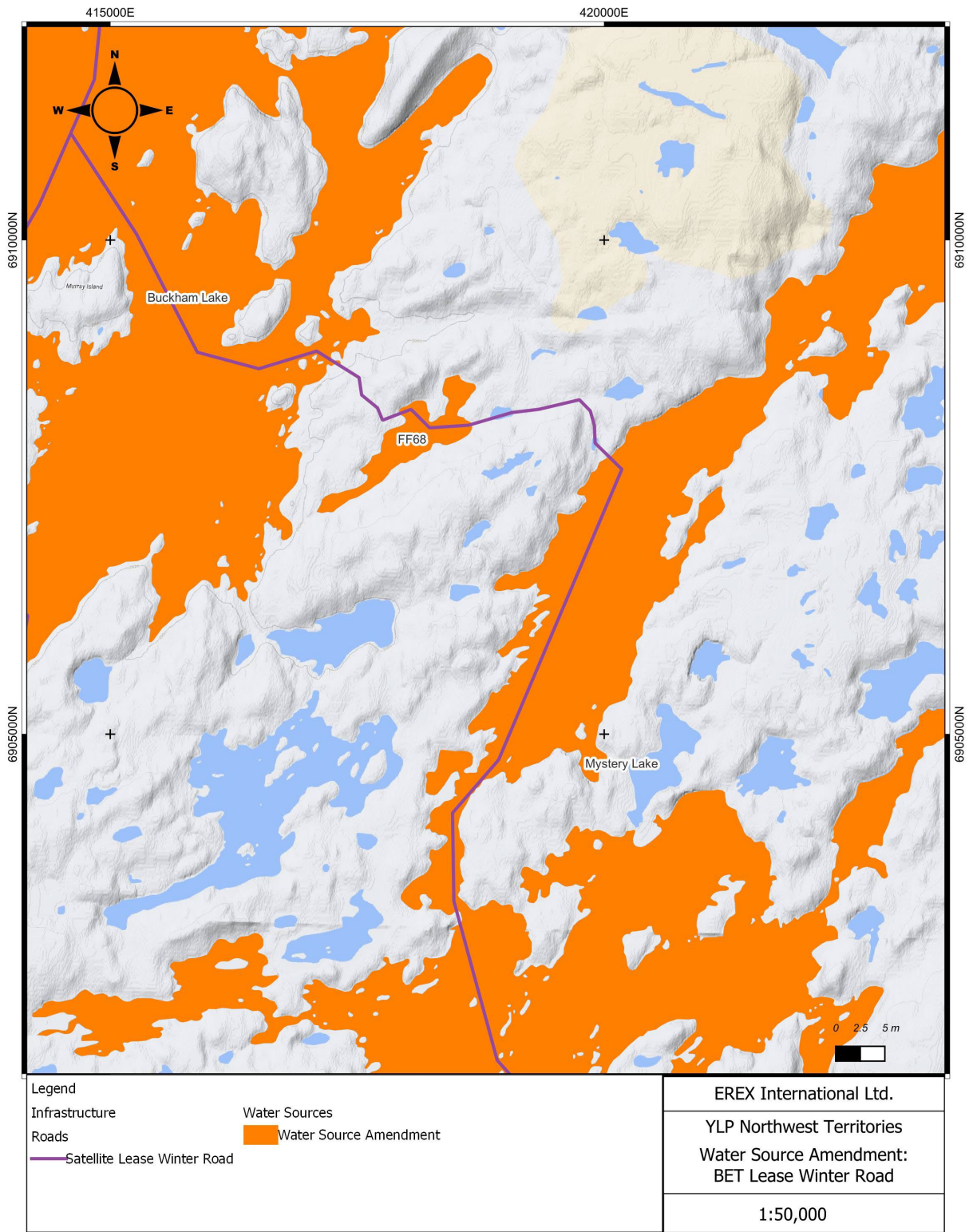


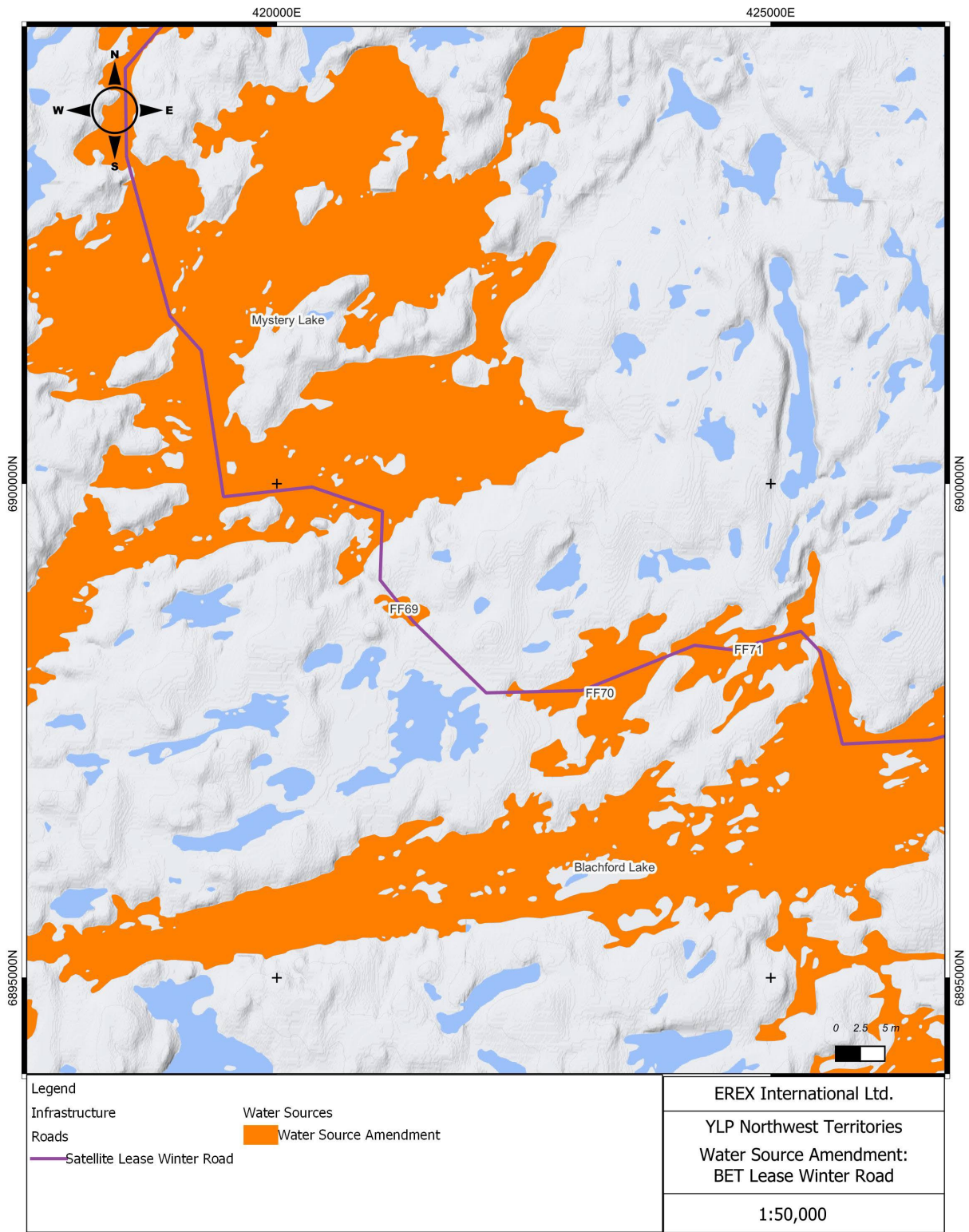


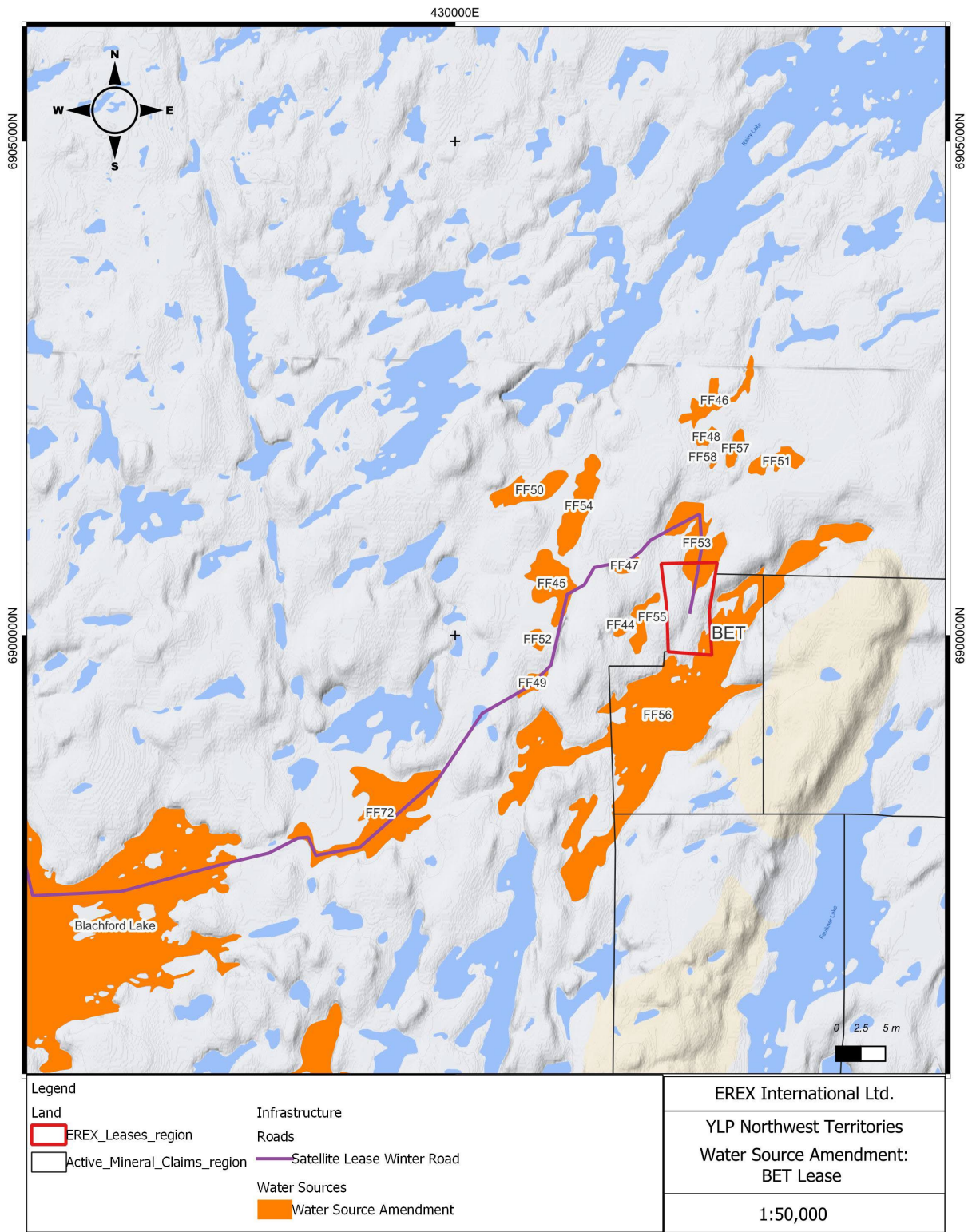












Appendix B: Anticipated Disturbance to Territorial and Federal Lands

Table B-1: Anticipated Disturbance from Winter Roads and Trails

Road/Trail	Total Length (km)	Length on Land (km)	Assumed Width (m)	Federal Land				Territorial Land			
				# of Portages	Length on Land (km)	Disturbed Area	# Stream Crossings	# of Portages	Length on Land (km)	Disturbed Area	# Stream Crossings
Thompson-Lundmark Winter Road											
Ingraham Trail to Hidden Lake Camp	11.08	11.08	10	1	1.59	15.90	1	2	9.49	94.9	6
Hidden Lake Camp to Lake 13	5.30	4.02	10	1	0.58	5.80	1	3	3.44	34.4	0
NITE Access Road	0.51	0.39	5	0	0	0	0	2	0.39	1.95	0
Hi (Shorty) Access Road	2.37	1.98	5	0	0	0	0	2	1.98	9.9	1
Ki Access Road	2.33	1.52	5	0	0	0	0	4	1.52	7.6	0
Big Hill Lake Access Road	8.74	2.43	5	0	0	0	0	4	2.43	12.15	2
Bullmoose Winter Road	70.30	17.37	10	2	2.55	25.5	4	24	14.82	148.2	12
Bullmoose Mine Spur Road	8.85	3.99	10	2	0.84	8.4	0	4	3.15	31.5	1
Echo Camp Spur Road	26.19	5.92	10	1	0.42	4.2	1	8	5.50	55	1
HID Spur Road	9.74	5.88	5	1	4.31	21.55	0	7	1.57	7.85	1
MUT Spur Road	20.80	3.59	5	1	0.07	0.35	0	12	3.52	17.6	0
BIN Spur Road	2.51	0.56	5	0	0	0	0	1	0.56	2.8	1
LENS Spur Road	7.06	1.59	5	0	0	0	0	9	1.59	7.95	0
BET Spur Road	34.35	7.82	5	0	0	0	0	33	7.82	39.1	2
Total		68.14		9	10.36	81.70	7	115	57.78	470.90	27
Total Disturbed Area (ha)						0.08				0.47	

Table B-2: Anticipated Disturbance on Federal Lands

Type of Disturbance	Width (m)	Length (m)	Area (m2)	Quantity		
				Original	Adjusted	Total Area (m2)
Structures						
Sleepers	4.3	4.9	21.07	18	20	421.40
First Aid Tent	4.3	4.9	21.07	1	1	21.07
Kitchen/Dining	4.3	9.8	42.14	2	2	84.28
Men's Dry	4.3	9.8	42.14	1	1	42.14
Women's Dry	4.3	6.1	26.23	2	2	52.46
Office	4.3	4.9	21.07	2	2	42.14
Core Shack	4.3	9.8	42.14	3	3	126.42
Cut Shack	4.3	4.9	21.07	3	3	63.21
Toilet Facilities	4.3	4.9	21.07	2	2	42.14
Generator Shack	3.7	4.9	18.13	3	3	54.39
Incinerator Shack	4.3	4.9	21.1	n/a	1	21.07
Pump Shack	4	4	16	n/a	1	16.00
Maintenance Tents	7.3	9.1	66.4	n/a	2	132.80
Maintenance Shop (Sea-Can)	2.43	6	14.6	n/a	1	14.60
Other Disturbance						
Heli Pad	25	25	625	1	1	625.00
Fuel Laydown	15	20	300	1	1	300.00
Equipment Laydown	20	20	400	1	1	400.00
Core Laydown	30	30	900	1	1	900.00
Greywater Sumps	3	6	18	1	1	18.00
Blackwater Sumps	0.5	2	1	n/a	2	2.00
Drilling Waste Sumps - Core Cutting	1	1	1	1	1	1.00
Drilling Waste Sumps - Drills	1	1	1	22	0.9	0.90
Total (m²)						3,380.12
Total (ha)						0.34

Table B-3: Anticipated Disturbance on Territorial Lands

Type of Disturbance	Previously Described					Adjusted				
	Width (m)	Length (m)	Area (m ²)	Quantity	Total Area (m ²)	Width (m)	Length (m)	Area (m ²)	Quantity	Total Area (m ²)
Structures										
Sleepers	4.3	4.9	21.1	7	147.7	4.3	4.9	21.1	20	422.0
Kitchen/Dining - Echo Area Camp	4.3	4.9	21.1	1	21.1	4.3	9.8	42.1	2	84.2
Kitchen/Dining - Fly Camps						4.3	4.9	21.1	2	42.2
Dry/Wash	4.3	9.8	42.1	1	42.1	4.3	9.8	42.1	2	84.2
Office	4.3	4.9	21.1	1	21.1	4.3	4.9	21.1	4	84.4
Cut Shack	4.3	4.9	21.1	1	21.1	4.3	4.9	21.1	2	42.2
Core Shack	4.3	9.8	42.1	1	42.1	4.3	9.8	42.1	1	42.1
Emergency/Warming Shelter	4.3	4.9	21.1	2	42.2	4.3	4.9	21.1	3	63.3
Toilet Facilities - ECHO Area Camp	n/a	n/a	n/a	n/a	n/a	4.3	4.9	21.1	2	42.2
Toilet Facilities - Fly Camps	n/a	n/a	n/a	n/a	n/a	1.21	1.21	1.5	4	6.0
Generator Shack	n/a	n/a	n/a	n/a	n/a	4.3	4.9	21.1	1	21.1
First Aid Tent	n/a	n/a	n/a	n/a	n/a	4.3	4.9	21.1	1	21.1
Incinerator Shack	n/a	n/a	n/a	n/a	n/a	4.3	4.9	21.1	1	21.1
Pump Shack	n/a	n/a	n/a	n/a	n/a	4	4	16	1	16.0
Maintenance Tents	n/a	n/a	n/a	n/a	n/a	7.3	9.1	66.4	2	132.8
Maintenance Shop (SeaCan)	n/a	n/a	n/a	n/a	n/a	2.43	6	14.6	1	14.6
Other Disturbance										
Heli Pad						25	25	625	1	625.0
Heli Pad - Fly Camps	n/a	n/a	n/a	n/a	n/a	15	15	225	2	450.0
Equipment Laydown						20	20	400	1	400.0

Type of Disturbance	Previously Described					Adjusted				
	Width (m)	Length (m)	Area (m ²)	Quantity	Total Area (m ²)	Width (m)	Length (m)	Area (m ²)	Quantity	Total Area (m ²)
Core Laydown						30	30	900	1	900.0
Fuel Laydown - ECHO Area Camp						15	20	300	1	300.0
Fuel Laydown - Fly Camps	n/a	n/a	n/a	n/a	n/a	5	5	25	2	50.0
Greywater Sumps										
ECHO Area Camp						3	6	18	2	36.0
Fly Camps						0.5	1	0.5	2	1.0
Blackwater Sumps										
ECHO Area Camp						0.5	2	1	2	2.0
Fly Camps						0.5	0.5	0.3	4	1.2
Drilling Waste Sumps - Core Cutting						1	1	1	3	3.0
Drilling Waste Sumps - Drilling						1	1	1	17.1	17.10
Total (m²)					337.4					3,924.8
Total (ha)					0.03					0.39

Appendix C: Large Scale Maps of the Proposed Water Sources Near the BET, HID, MUT, BIN, and LENS Leases

