



**Waste Management Plan  
EREX International Ltd.  
Yellowknife Lithium Project**

**MV2022C021,  
MV2022L8-0008, MV2022L8-0009**

Project	Yellowknife Lithium Project
Location	Bighill – Hidden – Tanco Lakes area, NWT
Date of Submission	May 30, 2023
Version #	2.0

## Table of Contents

<b>1. Introduction and Project Details.....</b>	<b>3</b>
1.1. Corporate Contact Information.....	3
1.2. Effective Date.....	3
1.3. Revisions.....	3
1.4. Recipients .....	4
1.5. Copies of Current Version of the Plan.....	5
1.6. Purpose and Scope .....	5
1.7. Environmental, Health and Safety (EHS).....	5
1.8. Project and Site Description.....	5
1.9. Site Description.....	13
<b>2. Waste Types, Management Methods, and Infrastructure .....</b>	<b>13</b>
2.1. Waste Types .....	13
2.2. Waste Management Methods .....	14
2.3. Waste Management Infrastructure.....	15
2.3.1. Waste Storage and Disposal.....	15
2.3.2. Sump.....	19
2.3.3. Sewage Containment and Disposal Facility .....	20
<b>3. Off-Site Waste Disposal .....</b>	<b>20</b>
<b>4. Waste Management Plan Review and Update .....</b>	<b>20</b>

## Figures

Figure 1. Location map of EREX's lease in the Yellowknife area.....	6
Figure 2. Location map for EREX's mineral leases closest to Yellowknife .....	8
Figure 3. Areas for proposed drilling, campsite and fuel cache, Fi-Ki-Shorty leases .....	9
Figure 4. Areas for proposed drilling, shelter, and fuel cache, NITE & BIG leases.....	10
Figure 5. Areas for proposed drilling, camp, and fuel cache, EHCO lease .....	12
Figure 6. Proposed camp layout with locations of sumps, and incinerator .....	17
Figure 7. Proposed camp layout showing surface contours in metres ASL .....	18

## Tables

Table 1: EREX International Ltd. - Contact Information.....	3
Table 2: Version and Revision History .....	3
Table 3: Conformity Table.....	4
Table 4: Recipients of this Version of the Waste Management Plan .....	4

## Appendices

### Appendix A      Correspondence – City of Yellowknife Solid Waste Disposal Facility

-- KBL Environmental Ltd, hazardous waste

## 1. Introduction and Project Details

EREX International Ltd (“EREX”) has developed this Waste Management Plan (or “Plan”) for its Yellowknife Lithium Project, Hidden Lake area in accordance with the Mackenzie Valley Land and Water Board’s [Guidelines for Developing a Waste Management Plan](#).

### 1.1. Corporate Contact Information

The following Table 1 presents the key corporate information for EREX International Ltd.

**Table 1: EREX International Ltd. - Contact Information**

Position	Information
<b>Company (Head Office)</b>	NAME: Carl Verley, P.Geo., Vice-President, Exploration
	ADDRESS: 300 – 1055 West Hasting Street, Vancouver, B.C. V6E 2E9
	PHONE: 604-616-8299
	EMAIL: <a href="mailto:carl@li-ft.com">carl@li-ft.com</a>
<b>Project Manager</b>	NAME: Chris Hughes, MSC, P.Geo., Project Manager, Equity Expl’n Consultants Ltd
	MAILING ADDRESS: 1238 – 200 Granville Street, Vancouver, BC V6C 1S4
	PHONE: 604-688-9806
	EMAIL: <a href="mailto:chrish@equityexploration.com">chrish@equityexploration.com</a>

### 1.2. Effective Date

This Waste Management Plan is effective as of May 30, 2023. While this Plan is undergoing a public review, the previous version of the Plan shall take precedence and be acted in accordance with until the Board approves a subsequent Plan version.

### 1.3. Revisions

The Waste Management Plan is a living document that will be reviewed annually, at a minimum, and prior to the start of any site activities, with additional reviews as warranted. Updates should be made to reflect changes in waste management locations and practices, and new personnel and associated contact information. Table 2 presents a summary of the versions of this Plan and any revisions made; it is updated each time a revision is made to the Plan. This ensures stakeholders have the most current copy of the Plan.

**Table 2: Version and Revision History**

Version #	Date	Sections/Pages revised	Summary of Changes/Comments
1.1	Nov. 8, 2022	n/a	First submission
1.2	March 3, 2023	p. 3, 4, 6, 8, 9, 10, 12, 13, 14, 15, 17	Contacts, access roads, incinerator & sewage disposal, domestic waste, waste disposal, sewage disposal hazardous waste disposal, maps

**Table 3: Conformity Table**

Revision	Section	Board Direction	Date
1.2	Figure 3, Page 9	Revise Figure 3 to show the fuel cache located on the F1 lease, and update text to remove reference to storage of fuel on federal land (62)	March 2, 2023
1.2	Figure 6, Page 16	Revise to include a figure illustrating the layout of the camp and supporting infrastructure related to waste management (63)	March 2, 2023
1.2	Section 2.3, page 14	Add a section that describes the location of temporary storage for various waste streams that are likely to be generated by the Project activities.	March 2, 2023
1.2	Appendix A	Append the letter from KBL Environmental Ltd. That they will accept hazardous waste streams generated from the Project (65)	March 2, 2023
1.2	Section 2.3.2, page 18	Update the sump details (waste volume, waste types and sump sizing) for the cap at Hidden Lake. (66)	March 2, 2023
2.0	Section 1.7, p.5	Project Description, update text to include Perlis leases	May 30, 2023
2.0	Section 1.7, p7	Update project activities, including helicopter-supported summer drill program and winter drilling to start in 2024.	May 30, 2023
2.0	Sect 2.3, p.15 & p.20	Revise to state pit latrines will not be used at Hidden Lake camp	May 30, 2023
2.0	Section 2.3 and 2.3.1, p16 and 17	State waste storage is on federal land; elaborate on drilling waste disposal and storage	May 30, 2023
2.0	Section 2.3, p.19	Revised storage of waste streams on federal and territorial land prior to disposal off-site	May 30, 2023

Table 3 identifies who the most recent version of the Plan has been distributed to:

**Table 4: Recipients of this Version of the Waste Management Plan**

Name	Position
Ryan Miller, Johanna Black, Adrian Boyd, Kieron Testart	Yellowknives Dene First Nation (YKDFN)
Senior Administrative Officer	Lutselke First Nation (LTDFKN)
Minnie Whimp	Deninu Kue First Nation
Brett Wheler, Violet Camsell-Blondin, Jessica Pacunayen, Longinus Ekwe, Grace MacKenzie	Tlicho Government
Jessica Hurtubise, Noah Johnson	North Slave Metis Alliance
Tim Morton	CIRNAC
Clint Ambrose	GNWT

#### 1.4. Copies of Current Version of the Plan

Copies of the most current version of the Waste Management Plan are always available on-site at the following locations:

- ☐ Hidden Lake campsite office and Dining Hall;

Additional copies of the Waste Management Plan can be obtained by contacting EREX International Ltd directly using the contact information in table 1.

#### 1.5. Purpose and Scope

The purpose of this Waste Management Plan is to outline the management of various waste types at the Yellowknife Lithium Project by EREX and all contractors on-site. The Plan identifies the various waste types and characteristics; describes the sources of waste generation; provides estimates of the amounts (volume or mass) of wastes to be produced; and includes consideration of potential environmental effects, social factors, and regulatory factors including compliance with all applicable acts, regulations, authorizations, land use permits, and water licences. The Plan has been prepared to ensure proper disposal of waste.

#### 1.6. Environmental, Health and Safety (EHS)

EREX International Ltd is committed to the concept of sustainable development and the protection of the environment and human health. EREX is committed to effective waste management planning that includes, source reduction, reuse, recycle/recovery, treatment, and release to the receiving environment. EREX's Environmental, Health and Safety (EHS) Policy includes the following:

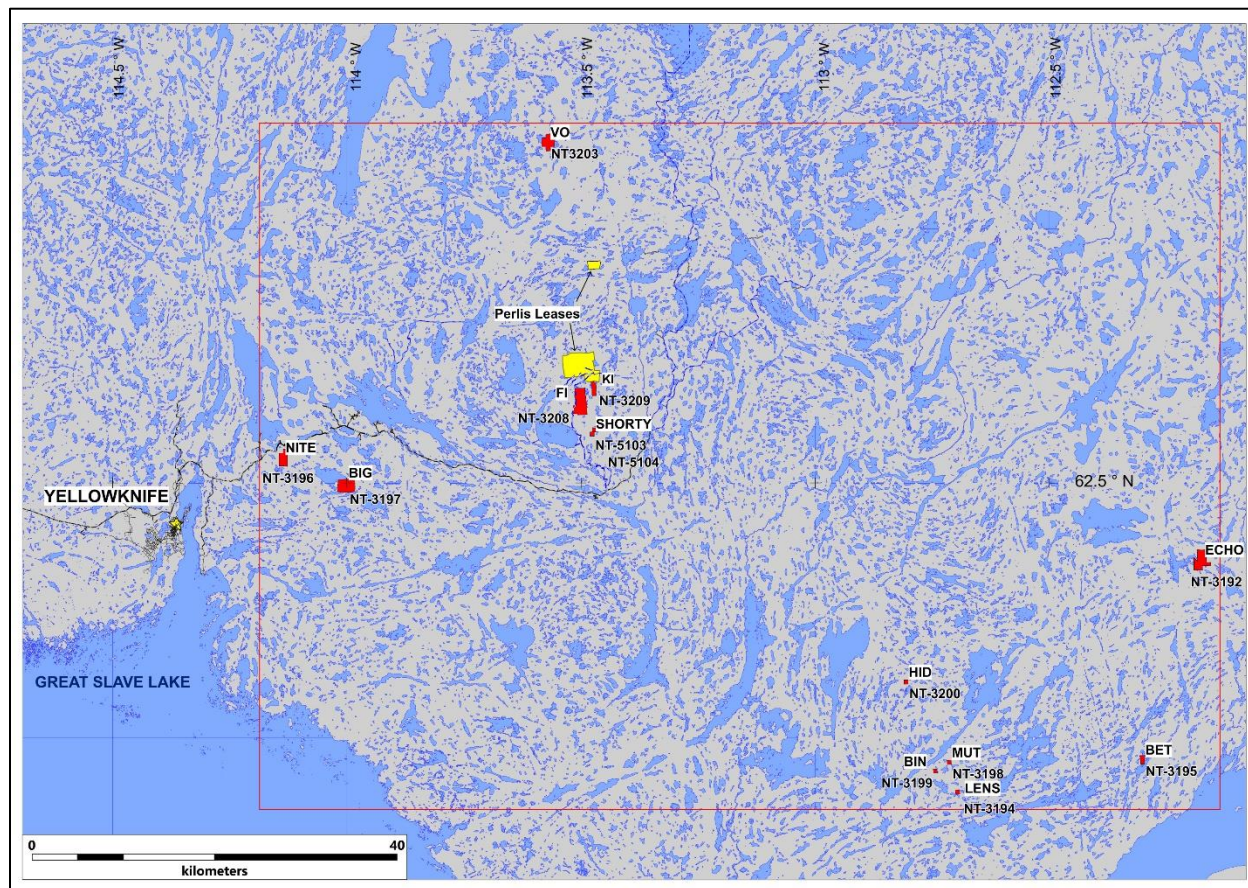
- ☐ Project manager is responsible for ensuring that all the requirements of this EHS Policy are fully implemented.
- ☐ Project manager and supervisors are responsible for ensuring that their employees are trained in safe work procedures, to undertake their assigned duties without accidents, injuries, or harm to the environment, and for ensuring that employees follow safe work methods and all regulations related to their work.
- ☐ All personnel are to:
  - ☐ Comply with existing regulations;
  - ☐ Protect the environment as is technically feasible and economically practical;
  - ☐ Cooperate with other groups on the protection of the environment;
  - ☐ Implement, support, and adhere with the EHS Policy and any associated programs by making safety, health and protection of the environment a part of their daily routine;
  - ☐ Follow safe work methods and relevant regulations. Where a conflict arises due to different standards or requirements between different regulations or standards, the more stringent of the two will apply;
  - ☐ Report unsafe practices or areas in need of improvement; and
  - ☐ Keep employees, government officials, and the public informed.

The Waste Management Plan will be presented to all staff (employees and contractors) during their on-site orientation sessions, including where copies of the Plan can be located on-site.

#### 1.7. Project and Site Description

EREX International Ltd. ("EREX") holds 13 mineral leases east of Yellowknife, bounded by the red rectangle in Figure 1 (i.e., latitudes: 62.179129 to 62.854255, and longitudes: 112.135661 to

114.186622); referred to as the Yellowknife Lithium Project (the “Project”). In addition, EREX has recently entered an option to purchase agreement with Perlis Enterprises Inc. to acquire Perlis’s 13 mineral leases that cover the abandoned Thompson-Lundmark mine as indicated in yellow on Figure 1.



**Figure 1. Location map of EREX's lease in the Yellowknife area.**

The leases range from 14 km northeast of Yellowknife, in the case of NT-3196 (NITE) and 112 km east in the case of N-3192 (ECHO {formerly known at THOR}). Yellowknife is, therefore, the closest supply and logistics center.

The purpose of the exploration work is to estimate lithium resources in the pegmatite dykes that are known to occur on the leases. If successful, EREX will then proceed to study the feasibility for extracting the lithium minerals, predominantly spodumene, from the pegmatite rock, as well as, building a mine for that purpose. Production of a spodumene concentrate can be done using conventional mineral processing technology. The tailings and mine waste generated from mining of the pegmatites and surrounding Burwash Formation metasedimentary rocks are believed to be relatively benign in terms of toxicity or potential acid generation.

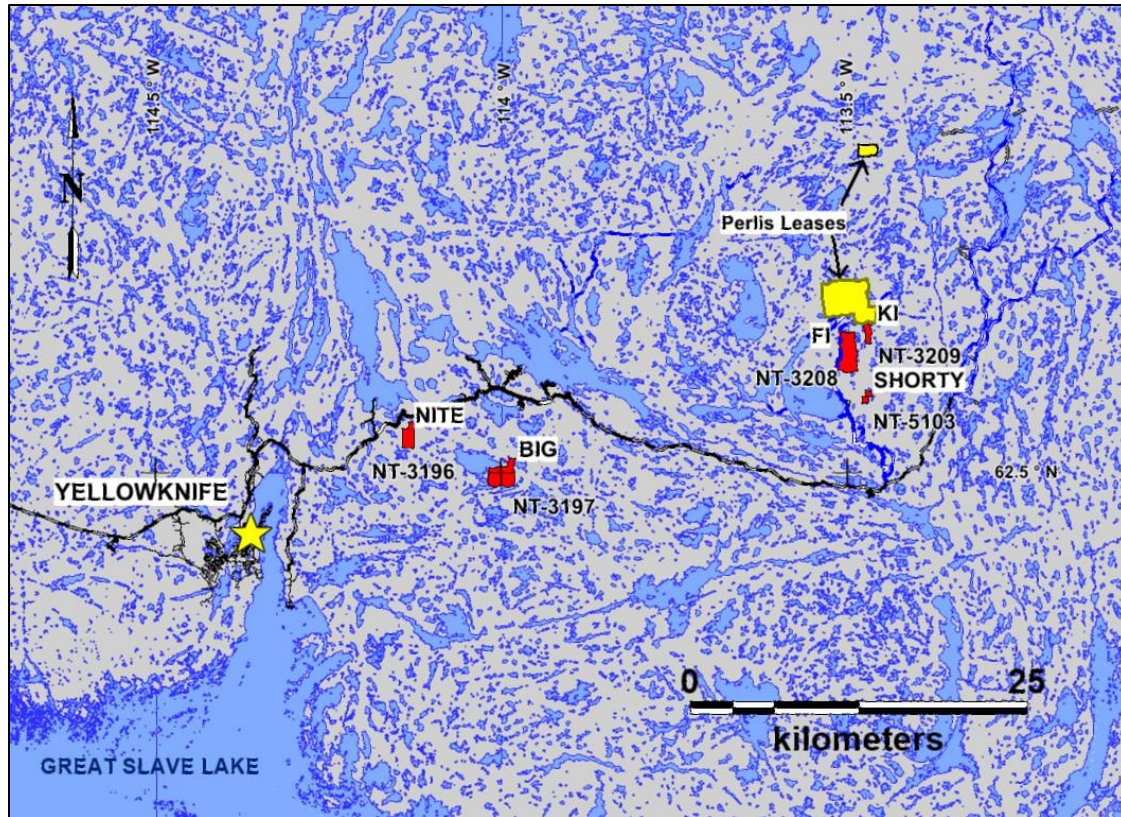
EREX has received a Type A Land Use Permit (MV2022C021) from the Mackenzie Valley Land and Water Board for a Type A Land Use Permit (“LUP”) and Type B Water Licences (“WL”) for Territorial (MV2022L8-0008) and Federal Lands (MV2022L8-0009) for the following activities:

1. ☐ Mineral exploration including diamond core and reverse circulation (RC) drilling, saw-cut channel sampling, and trenching;
2. ☐ Use of water for winter roads, drill pads, and drilling on territorial and federal land, as well as camp consumption on Federal land, with total consumption from all lands less than 300 cubic metres/day.
3. ☐ Use of equipment, vehicles, and machines;
4. ☐ Use and storage of fuel on federal land;
5. ☐ Use of helicopters and float-equipped fixed-wing aircraft during summer operations;
6. ☐ Helicopter-supported drilling on federal and territorial land during summer months
7. ☐ Construction, operation, and maintenance of a temporary camp on federal land and potential satellite camps on territorial land, and;
8. ☐ Opening and maintenance of existing winter access road (Thompson-Lundmark road) for winter drilling expected to start in 2024;
9. ☐ Establishing and maintaining over the course of winter programs temporary access roads.
10. ☐ Engagement with all affected parties to inform them of EREX's plans in a timely manner so that they will be able to fully consider the project and provide their consent to the proposed activities if they are acceptable.

The LUP application will cover a period of five years, with a possible two-year extension. During the operation of the exploration program progressive restoration of drill sites will occur on an ongoing basis. Diamond drilling may consist of up to 180 drill holes per year.

Initially, exploration will focus on the six leases closest to Yellowknife, as well as the recently optioned Perlis lease adjoining the Ki lease (Figure 2). The Ingraham Trail (Highway 4) passes to the north of the NITE and BIG lease and to the south of the other leases. There is an existing winter road to the abandoned Thompson-Lundmark mine that passes through lease NT-3209 (Fi). Access to these leases is by helicopter or float-equipped fixed-wing aircraft during summer months.





**Figure 2. Location map for EREX's mineral leases closest to Yellowknife**

It is anticipated that the first phase of work will consist of diamond drilling during Spring 2023. The drilling will take place in the areas outlined on Figures 3, 4, and 5, typically during the period March to mid-May, but with climate change that may vary from year to year. Opening of the Thompson-Lundmark winter road in winter 2023 by the proponent will allow for mobilization of equipment to site. The main camp will be established on Federal land covering the reclaimed area of the abandoned Hidden Lake gold mine. Fuel in bulk tanks, as well as drums will also be stored on Federal land beside the main camp. The main camp will consist of accommodations for up to 49 people. Water for the camp will come from Hidden Lake.



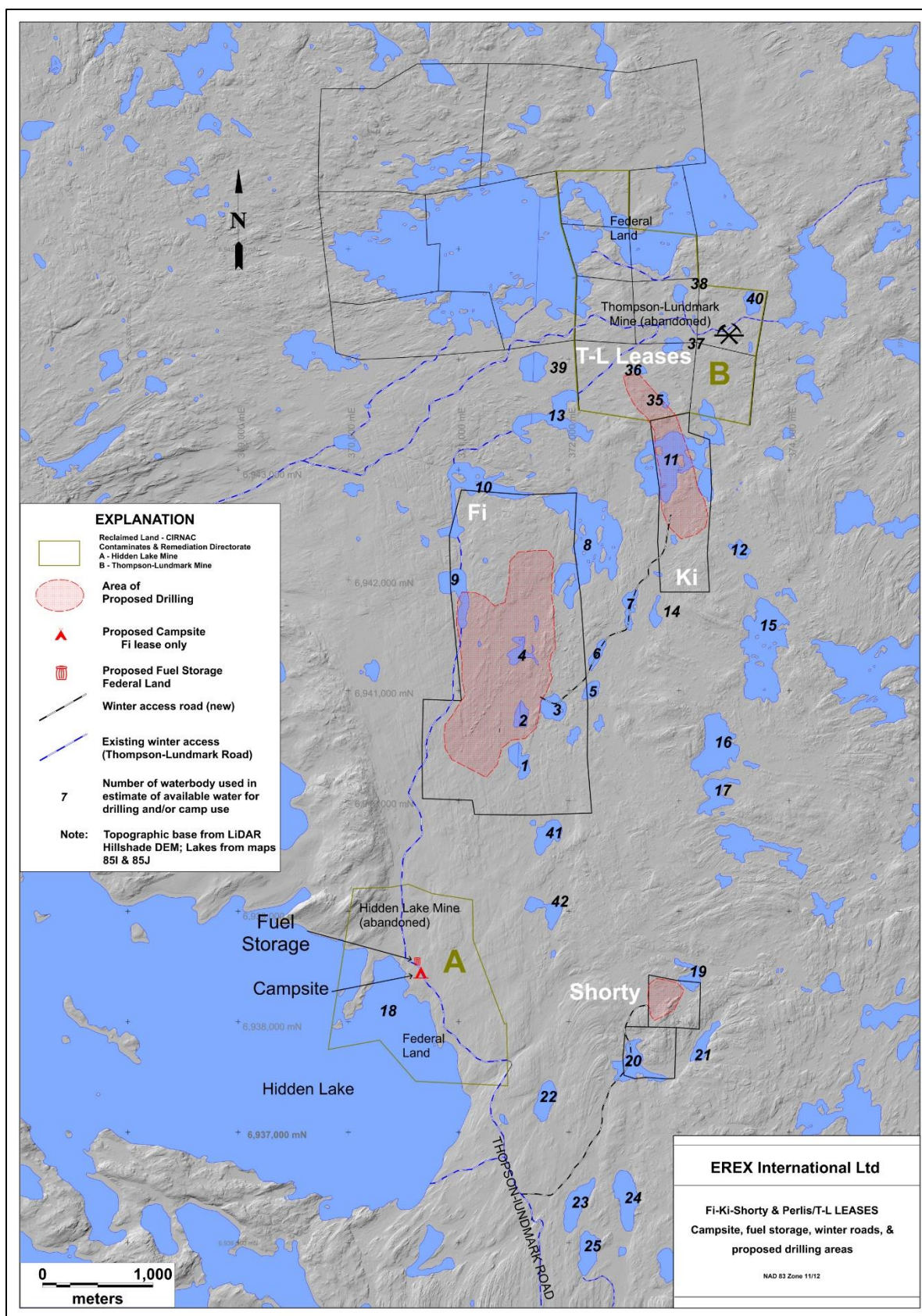


Figure 3. Areas for proposed drilling, campsite and fuel cache, Fi-Ki-Shorty leases



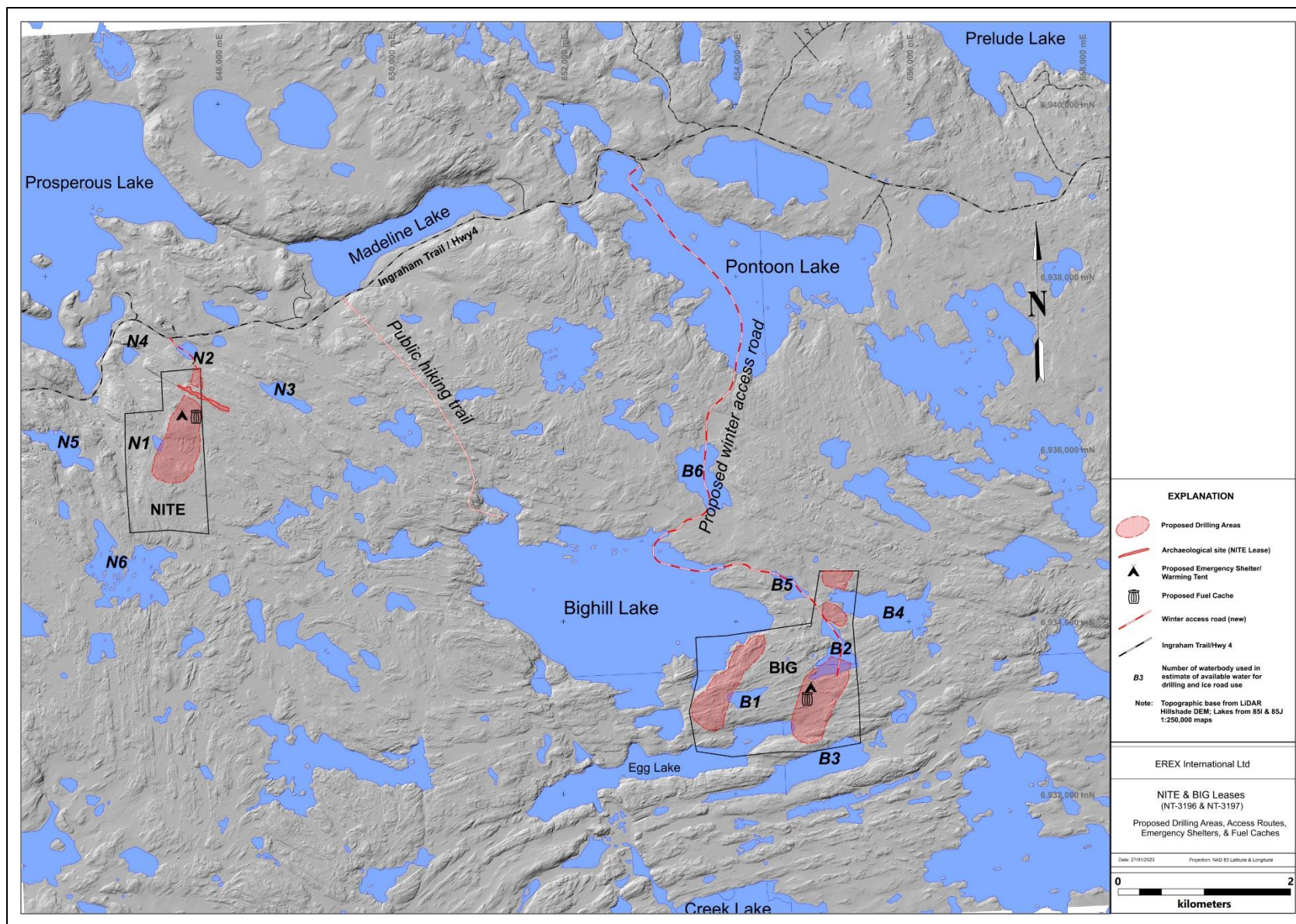
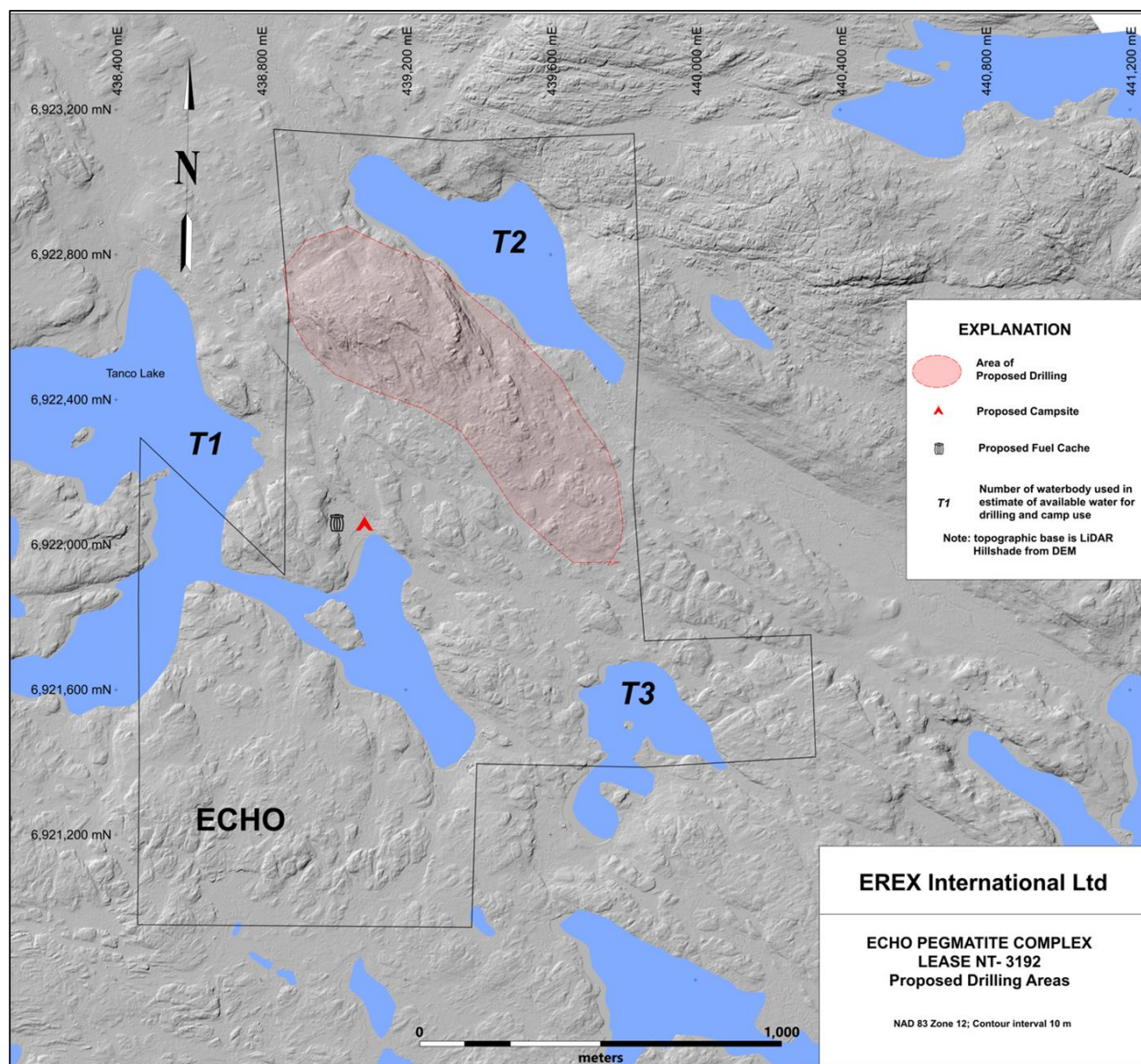


Figure 4. Areas for proposed drilling, shelter, and fuel cache, NITE & BIG leases

During the summer to early fall (mid-June to mid-October) work on the leases will be reduced with two helicopter-supported diamond drills operating on the FI-Ki-Shorty (formerly known as Hi) leases. Two helicopter-supported drills may work on the NITE and BIG leases.

Drilling may also take place on the ECHO (formerly known as THOR) lease during the summer. It is anticipated that this work will be conducted out of a smaller, helicopter-supported drill camp that will be established on the lease for that purpose; capable of accommodating 20 persons. Mobilization of camp and fuel by fixed wing aircraft on skis may take place in the early spring of 2023 before break-up. Campsite, fuel cache, and proposed drill area locations are illustrated on Figure 6. Fuel cached at the ECHO campsite will total a maximum of 50 drums of Jet-B, 50 drums of diesel, 3 drums of regular gasoline at any one time. Water for the camp will be drawn from Tanco Lake (T1); for drilling water will be sourced from either Tanco Lake or from the unnamed lake labelled T2 in Figure 5 and possibly from lake T3.





**Figure 5. Areas for proposed drilling, camp, and fuel cache, ECHO lease**

In addition, surface saw-cut channel sampling will be conducted on outcropping exposures of the pegmatite dykes. The channel samples will be located at 100 metres intervals crossing the dykes along the fence or section lines of the drill holes. The channels will be cut with gas powered cut-off saws equipped with circular saw blades fitted with diamonds for cutting rock. Channels will be approximately 7 centimetres wide and 10 centimetres deep. Samples collected from the channels will be shipped out for lithium analysis. Results will be used in conjunction with the results from drill core to estimate lithium resource for the dykes. Furthermore, at selected sites on some of the dykes, trenches may be blasted out to obtain samples of less than one tonne. These samples will be used for metallurgical studies on the recovery of lithium minerals from the dykes and in support of preliminary economic analyses for mine development.

Mapping, prospecting, and surface sampling will continue during summer programs on a project wide basis, focussing on pegmatites on leases: NT-3192, NT-3203, and other leases. It is anticipated that diamond drilling will occur on some of the outlying leases during the term of the permit.

Analyses and assays of rock cores retrieved from diamond drilling, chips from RC drilling, as well as surface saw-cut channel samples, and mini-bulk samples will provide the primary data used in the estimation of the lithium resources for the pegmatites. In addition, the geochemical data derived from this work will provide information on the levels of toxic elements, such as arsenic cadmium, mercury, and selenium, in the rock, that could contaminate the surrounding environment. This information will help to inform measures to mitigate pollution from these elements should they be found to exceed CCMC allowable levels and should development proceed. It should be noted that in a LUP application (MV2009X0045) submitted by the Contaminants and Remediation Directorate, INAC, for a Remedial Action Plan for the abandoned Hidden Lake Mine, it was pointed out that:

*“Acid-base accounting analysis was conducted to determine the acid generating potential of both categories of waste rock. Preliminary investigations determined that a small portion of the waste rock may have some potential to result in metal leaching. However, subsequent evaluations determined that the waste rock has a negligible potential to result in adverse impacts. More specifically, the potential for measurable impacts to Hidden Lake is considered to be nil.”*

Beyond the first year of the permit, drilling is expected to resume in the winter of 2024 and continue into summer 2024. Additional infill drilling as well as geotechnical drilling will also be required in succeeding years of the LUP on the Fi, Ki, Shorty, NITE, BIG, and ECHO (formerly known as THOR) leases in order to upgrade resources to measured and indicated categories to support development planning.

## **1.8. Site Description**

Within the Project area the leases cover low-lying, rolling topography ranging in elevation between 250 and 320 metres above sea level. Muskeg, marshes, and lakes separated by northwesterly to northeasterly trending bedrock ridges are the dominant features. Numerous small lakes occur in the area where drilling is proposed. Recent forest fires have burnt the area covered by several of the leases, others are relatively sparsely treed. There are no major rivers running through the leases. Except for the six leases closest to Yellowknife, there are no communities, lodges, or trap lines in the immediate vicinity of the other leases. Therefore, the impact of the proposed operation is expected to be minimal from a social, as well as environmental point of view. However, parts of the project area are used for food gathering, hunting, and trapping by various aboriginal groups. Bison Historical Services Ltd has prepared an Archaeological Overview Study of the historical resources within and around the lease areas. An Archaeological Impact Assessment will be conducted in the Spring-Summer of 2023.

## **2. Waste Types, Management Methods, and Infrastructure**

### **2.1. Waste Types**

The waste types generated on-site will include the following:



- ☐ Hazardous or potentially hazardous wastes:
  - ☐ Ash or incinerator residue
  - ☐ Lead acid batteries and alkaline batteries
  - ☐ Equipment containing ozone depleting substances (e.g., refrigerators)
  - ☐ Chemical wastes – liquid or solids (e.g., paint)
  - ☐ Electrical equipment
  - ☐ Contaminated soils
  - ☐ Used oil, fuels, lubricants, greases, oil filters, and solvents
- ☐ Non-mineral wastes:
  - ☐ Domestic refuse
  - ☐ Bulky metals (vehicles, equipment)
  - ☐ Scrap metal
  - ☐ Inert waste
  - ☐ Plastics
  - ☐ Construction materials
  - ☐ Rubber products (e.g. tires and conveyor belts)
  - ☐ Sewage
- ☐ Mineral wastes:
  - ☐ Drill cuttings

## 2.2. Waste Management Methods

- (i) ☐ **Ash or incinerator residue** – These results from incineration of food waste and packaging. Food waste and associated packaging will be collected daily from the kitchen and drill site and incinerated in a fuel-fired, double chambered incinerator. The residue from the incinerator will be collected and placed in plastic trash bags and stored in containers that will prevent wildlife access to waste. Waste will then be transported to Yellowknife on weekly supply runs. In Yellowknife the waste will be disposed of at the City of Yellowknife solid waste facility. Recyclable packaging, such as plastic and glass bottles, will also be transported to Yellowknife and disposed of at appropriate facilities. The estimated mass of this type of waste is expected to be less than 20 kg/day on average.
- (ii) ☐ **Batteries (Alkaline/ Lead Acid)** – The source of this type of waste is from heavy machinery such as a truck and field equipment such as GPS units. The estimated mass for this is 20 kg over the course of one month. This type of waste will be collected and brought to Yellowknife for appropriate disposal.
- (iii) ☐ **Equipment containing ozone depleting substances (e.g. refrigerators):** this equipment is rented and will be returned to the supplier at the end of the field season.
- (iv) ☐ **Fuels, lubricants, greases, solvents, and chemical wastes** – These types of waste are also hazardous or potentially hazardous waste. They are usually generated from vehicles such as drill rigs, generators or other heavy equipment and are estimated to accumulate to not more than 50 litres over the course of one month. This waste will be carefully collected in labelled containers with lids, stored at least 100 m from a water body and then transported to a designated waste site in Yellowknife.
- (v) ☐ **Electrical equipment (generators and associated wiring):** this equipment is rented and will be returned to the supplier at the end of the field season.

- (vi) ☐ **Drill waste and cuttings** – These are non-soluble mineral waste with an estimated maximum production of 300 kg/day sourced from the diamond drilling. These will be disposed of in a natural depression or sump at or very near the drill site.
- (vii) ☐ **Contaminated Soils** – Every effort will be made to reduce any chances of soil contamination, including the use of absorbent geotextile mats placed under machinery that has the potential to leak oil or fuel. In the situation where soil becomes contaminated it will be dug up, placed in plastic trash bags and transported to an approved disposal site in Yellowknife. Over the course of the summer program, it is estimated that not more than one cubic metre of contaminated soil will accumulate due to the operation.
- (viii) ☐ **Sewage** – *Incinolet* toilets will be used to gather human excreta and associated products, which will be securely stored in wildlife proof containers onsite and then shipped offsite for proper disposal at a licensed facility in Yellowknife.
- (ix) ☐ **Domestic waste** consists primarily of food waste and packaging, which will be incinerated. The burnt residue will be transported to Yellowknife for disposal at the City of Yellowknife's solid waste disposal facility.
- (x) ☐ **Bulky or scrap metal**: the project is not expected to generate much scrap or bulky metal objects. Most scrap metal will be from the drilling operation, consisting of worn or broken drill rods broken drill motor parts, etc. These will be transported back to Yellowknife for recycling.
- (xi) ☐ **Construction material**: these will consist primarily of wood used in construction of tent floors and drill platforms. At the end of the season these will be transported back to contractors in Yellowknife.
- (xii) ☐ **Brush and Trees** – Brush and trees will be de-limbed and cut into suitable lengths so that all parts of the tree lie flat on the ground surface. They will then be spread in the adjacent forest or over a completed drill site.

### 2.3. Waste Management Infrastructure – Hidden Lake Campsite

At the Hidden Lake Campsite on federal land, on-site waste management infrastructure and facilities will include the following (refer to Figure 6 and 7):

- ☐ Waste Storage or Disposal Facility, including temporary facilities:  
Waste produced from the camp operation and drilling will in most cases be incinerated on site in a double chambered, fuel-fired incinerator on federal land. Solid non-hazardous, non-combustible waste such as metals parts, broken drill rods, will be temporarily stored on site and then along with residue from combusted trash, trucked out during winter, or flown out during summer to the City of Yellowknife's solid waste disposal facility; hazardous waste will be transferred to KBL Environmental Ltd's facility in Yellowknife.
- ☐ Sumps – three sumps for the disposal of grey water from each of the dry tents, kitchen, and core cutting tents will be dug into the overburden at the campsite;
- ☐ Sewage Containment and Disposal Facility – *incinolet* toilets will be used at the Hidden lake campsite during summer and in winter with waste being disposed of off-site;
- ☐ Combustion Equipment (Incineration) – double chambered, fuel-fired incinerator, such as Inciner8's model i8-40A or similar.

#### 2.3.1. Waste Storage and Disposal

At the Hidden Lake Campsite on federal land, on-site waste storage will be in plastic bags held in covered 32-gallon plastic trash containers stored inside camp facilities to protect it from wildlife incursions.

Food and general camp waste will be stored in these bins and at the end of each day the accumulated trash will be incinerated. Incineration will take place in a double chambered, fuel-fired incinerator to enable combustion of camp trash in a confined space to reduce the risk of accidental, uncontrolled fire. Non-combustible residue will be transferred to plastic trash bags and held bins until it can be taken out to Yellowknife and then to the City of Yellowknife solid waste facility for disposal. It is expected that waste will be flown out to Yellowknife on a weekly basis. In addition to the camp waste, and waste resulting from our proposed diamond drilling program, such as oil cans and plastic pails, lubricant tubes, bentonite/cement bags, broken metal drill parts will be collected and also sent out for disposal in Yellowknife. Material that is recyclable will be distributed to recycling facilities where possible. It is anticipated that the average volume, by weight, of non-combustible waste generated by our project will be 50 kg per week.

Hazardous waste generated by our project will be stored on federal land; it is expected to consist mainly of incinerated camp waste residue. Occasional alkaline batteries and rare lead acid batteries will be contained in segregated plastic containers. Used oil, fuels, lubricants, greases, oil filters, and solvents resulting from the proposed drilling operation will also be segregated into leak-proof bins. Other hazardous materials, such as, equipment containing ozone depleting substances (e.g., refrigerators), chemical wastes – liquid or solids (e.g. antifreeze, or paint), electrical equipment and contaminated soils, are expected to be very limited. Chemical wastes, such as aerosol paint spray cans, will be segregated and containerized. All the above hazardous waste products will be transported to Yellowknife for disposal at KBL Environmental Ltd.'s authorized waste disposal facility.

Refrigerators/freezers and electrical equipment will be returned to Yellowknife at the end of seasonal programs unless a caretaker is managing the camp.

The exclusion zone illustrated on Figures 6 and 7 represents the area around the abandoned Hidden Lake gold mine for which access is prohibited.

Waste generated at drill sites on both federal and territorial land will be collected as drilling is completed on a particular site and then moved to the Hidden Lake campsite on federal land for either incineration or accumulation until removal from site to Yellowknife to an appropriate disposal facility, depending on the nature of the waste: i.e., hazardous or non-hazardous solid waste.



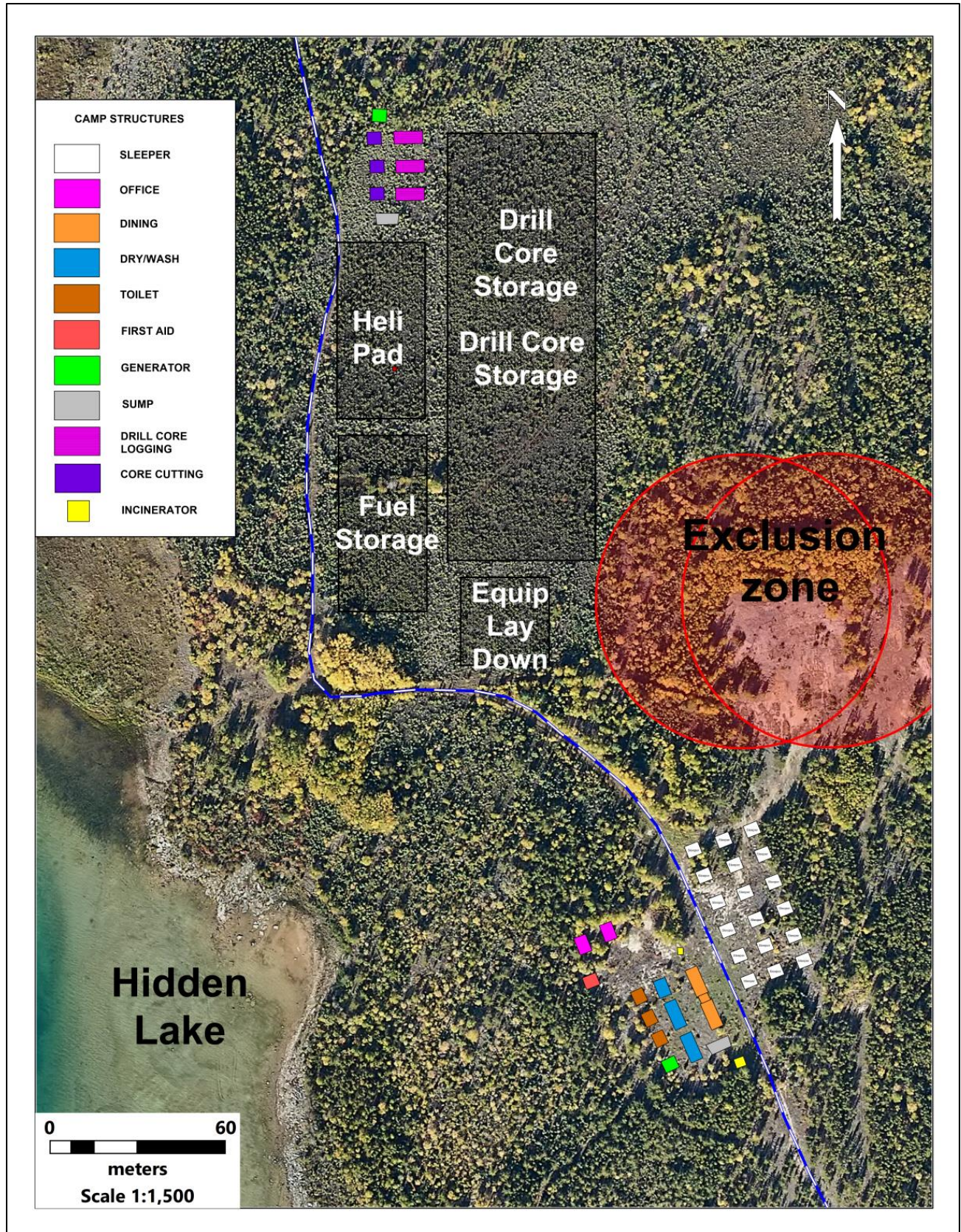


Figure 6. Proposed camp layout with locations of sumps, and incinerator



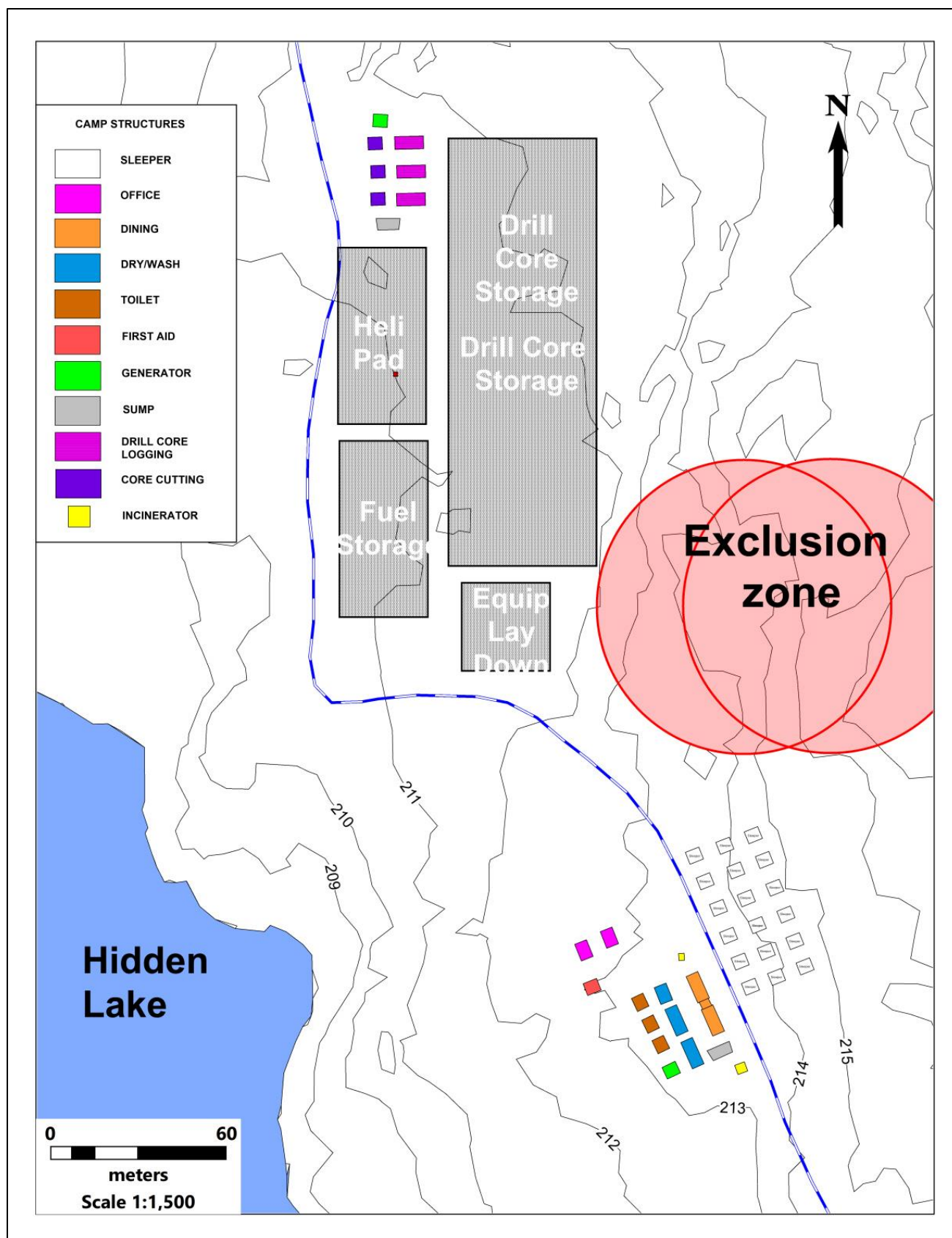


Figure 7. Proposed camp layout showing surface contours in metres ASL



Storage of Waste streams prior to transport off site:

On federal land:

- ☐ Incinerator residue will be stored in bins by the incinerator in the main camp.
- ☐ Batteries (alkaline, lead-acid, and lithium ion) will be stored in plastic containers in both the Company office tent and the Drillers office tent depending on their source.
- ☐ Construction materials related to the main camp will be retained by the Company office tent until transport off site is arranged.
- ☐ Construction materials associated with drilling, such as site-up timbers will be stored by the bulk fuel storage facility on federal land until transport off site is arranged.
- ☐ Drill cuttings arising from diamond drilling on federal land will be placed in a depression or sump beside or very near to the drill site from which they were generated.
- ☐ Equipment containing ozone depleting chemicals such as refrigerators: these large appliances will be temporarily stored by the Kitchen mess facility on federal land until transport off site is arranged.
- ☐ Electrical equipment: will be stored in one of the generator sheds on federal land until such time as off-site transport to a recycling facility is arranged.
- ☐ Waste fuels, lubricants, greases, solvents, and chemicals, regardless of the land they were generated on, will be temporarily stored at a site close to the bulk fuel storage facility on federal land until transport off site is arranged.
- ☐ Scrap metal (eg.. diamond drills) will be stored in a segregated area near the bulk fuel storage facility on federal land until transport off site can be arranged.
- ☐ Sewage residue from the incinolet toilets will be bagged and contained in the toilet tent(s) until transport off site to KBL Environmental Ltd is arranged.

On territorial land:

- ☐ Contaminated soils resulting from fuel spills on federal and territorial land will be bagged up and stored at a site near the bulk fuel storage facility on federal land until transport off site is arranged.
- ☐ Drill cuttings arising from diamond drilling on territorial land will be placed in a depression or sump beside or very near to the drill site from which they were generated.

### **2.3.2. Sumps**

Sumps will be dug by the men's and women's dry, kitchen, and core cutting tents for containing and dissipating grey water into the overburden, consisting of glacial outwash sand and gravel. The sump at the core cutting facility will be approximately one metre long, one metre wide, and one metre deep. PVC pipes from the core cutting tents will direct grey water, consisting of water mixed with rock cuttings generated by the core saws, to the sump located beside these structures.

For the dry's and dining hall a sump approximately 6 metres long, 3 metres wide and 1 metres deep will be dug by the dining hall. Grey water resulting from showers, clothes washing, and kitchen

clean-up, will be directed through PVC piping to the sump from each building into the sump. The sumps will be fitted with plywood covers. At the end of the operation the sumps will be backfilled. It is anticipated that up to 15,000 litres of grey water will enter the sumps over the course of a day. The sumps will be monitored daily to make sure that grey water is able to percolate into the surrounding soil. If a sump is unable to handle the greywater load, then it will either be expanded in size or relocated to a place nearby with adequate drainage.

### **2.3.3. Sewage Containment and Disposal Facility**

For winter and summer programs *incinolet* or similar toilets will be brought to the Hidden Lake camp and sewage residue from these toilets will be transported to Yellowknife for disposal at the approved hazardous waste facility. Pit latrines will not be used on federal land at the Hidden Lake camp. Pit latrines will be used only at some of the smaller outlying summer camps situated on territorial land. Pits will be filled in at the end of each season.

### **2.3.4. Combustion Equipment (Incineration)**

A double chambered, fuel-fired incinerator, such as Inciner8's model i8-40A or similar, will be used for the purpose of burning waste.

The incinerator will be in a cleared area downwind and away from nearby tents.

Residue from the incinerator will be collected and transported to the City of Yellowknife solid waste facility during weekly supply runs.

The Project Manager will delegate the task of daily incineration of waste to the Camp Attendant after safety training in the operation of the incinerator.

## **3. Off-Site Waste Disposal**

As part of the waste management plan, the City of Yellowknife was contacted to gain permission to dispose of waste at their landfill site, located in the city of Yellowknife. Permission was granted on September 16, 2022 (see Appendix A).

In addition, KBL has been contacted to provide services to manage acceptance of hazardous and other waste generated through EREX's exploration activities.

## **4. Waste Management Plan Review and Update**

Waste generated by the project will be closely monitored by the project manager to:

1. ☐ Make sure that waste is classified and contained appropriately,
2. ☐ Make sure that waste is handled in such a way that wildlife will not be attracted, and containment of waste is wildlife proof,
3. ☐ Make sure that the amounts of waste in a particular category do not exceed the limits anticipated by this Waste Management Plan, by monitoring the amounts of waste daily,
4. ☐ If the amount of waste in each category does exceed the amount anticipated by this plan, then the reasons for that overage must be determined and measures must be implemented to:
  - ☐ Attempt to reduce the overage, or
  - ☐ Make sure there is the ability to handle and safely dispose of the excess waste.
5. ☐ The project manager will involve all members of the crew, including contractors, to be aware of their personal role in reducing waste and the importance of taking such action.

## **Appendix A: Correspondence**

Letter from:

- ☐ City of Yellowknife, Public Works and Engineering, Re: Solid Waste Management.
- ☐ KBL Environmental Ltd., Re: waste and hazardous waste disposal



## CITY OF YELLOWKNIFE

September 16<sup>th</sup>, 2022

EREX International Ltd.  
300-1055 West Hasting Street  
Vancouver, B.C.  
V6E 2E9

Attention: Mr. Carl Verley, P. Geo

Dear Carl,

RE: Acceptance of inert mixed solid waste from the EREX International Ltd. Bighill and Hidden Lake Diamond Drilling Program at the City of Yellowknife Solid Waste Facility.

I am pleased to inform you that the City of Yellowknife has approved the request for the use of the Yellowknife Solid Waste Facility for the disposal of inert mixed solid waste (i.e. non-combustible incineration residue and separated recyclables). Prior to disposal, waste shall be separated according to the categories listed in the City of Yellowknife Fees and Charges By-Law No. 4436 to the fullest extent possible. Any hazardous or combustible wastes generated at either site by EREX International Ltd. (e.g. batteries, oil, etc.), will not be accepted at the City of Yellowknife Solid Waste Facility.

The City of Yellowknife Solid Waste Facility is regulated by the Mackenzie Valley Land and Water Board (MVLWB) water licensee MV2021L3-0003. If waste generated by the project interferes with the regulations set out in this or a future water license, the City reserves the right to terminate this agreement at any time.

This acceptance letter covers inert mixed solid waste disposal at the Yellowknife Solid Waste Facility until October 31, 2023.

Sincerely,

Chris Greencorn  
Director, Public Works

DM# 709448



P 867.873.5263  
F 867.669.5555  
kblenvironmental.com

□ □ □ □ □ □ □ r □ □ □ □ □ □ 2 □ □ □ □

[illegible]

--	--