

# **Trinex Lithium Limited**

A subsidiary of



## **Engagement Plan V1.1**

### **Halo-Yuri Project**

Prepared for the  
MacKenzie Valley Land and Water Board  
13 December 2024

### Document Maintenance and Control

Trinex Lithium Limited is responsible for the distribution, maintenance and updating of this document. This document will be reviewed annually at least, and more frequently to include any changes in the Project, best practices, guidelines, advice from the Inspector, contact information, environmental factors. Revised versions will be provided to the Mackenzie Valley Land and Water Board for approval and circulated accordingly.

### Revision History

Revision #	Section(s) Revised	Description of Revision	Date
0	N/A	First version for Halo-Yuri Project	1 November 2024
1	Table 1	Additional parties added	13 December 2024

## Table of Contents

1. INTRODUCTION .....	4
1.1. Background .....	4
1.2. Project Contacts .....	4
1.2.1 Primary Contact .....	4
1.2.2 Secondary Contact .....	4
1.3. Engagement Goals .....	4
1.4. Guidelines .....	4
2. PROJECT DETAILS .....	5
3. AFFECTED PARTIES .....	7
4. ENGAGEMENT TRIGGERS .....	9
REFERENCES .....	11

## **1. INTRODUCTION**

### **1.1. Background**

This Engagement Plan (EP) has been created for Trinex Lithium Limited's (Trinex) Halo-Yuri Lithium Project (the Project). The Project involves surface and sub-surface exploration for lithium and other minerals within the Project mineral claims.

This Engagement Plan details how Trinex will engage with the affected parties prior to and during exploration work within the project area and should be referred to in conjunction with the companies Engagement Strategy Log, which includes a Community Engagement Presentation.

### **1.2. Project Contacts**

#### **1.2.1 Primary Contact**

David Cornish – Exploration Manager

Address: 128 Churchill Ave, Subiaco WA 6008, AUSTRALIA

Email: [dcornish@trinexminerals.com.au](mailto:dcornish@trinexminerals.com.au)

Website: [www.trinexminerals.com.au](http://www.trinexminerals.com.au)

Phone: +61 403 880 873

#### **1.2.2 Secondary Contact**

Nate Schmidt – Senior Geologist (Dahrouge Geological Consulting)

Address: 103-10183 112th Street, Edmonton, Alberta, CANADA

Email: [Nate.Schmidt@dahrouge.com](mailto:Nate.Schmidt@dahrouge.com)

Website: [www.dahrouge.com](http://www.dahrouge.com)

Phone: 780-434-9808

### **1.3. Engagement Goals**

The goals of engagement are to:

- Proactively develop relationships with affected parties,
- Communicate information about the Project including upcoming exploration programs,
- Identify any concerns and how they may jointly be resolved to the satisfaction of relevant parties.

### **1.4. Guidelines**

Applicable legislation in relation to preparation of this document includes:

- Engagement Guidelines for Applicants and Holders of Water Licenses and Land Use Permits (MVLWB 2018),
- Engagement and Consultation Policy (MVLWB, 2023),
- Guidelines for Proponents of Development (Tłıchq Government, 2022).

## 2. PROJECT DETAILS

Trinex Lithium Limited is a wholly owned subsidiary of Trinex Minerals Limited, an Australian-based resources company with projects across Western Australia, Northern Territory, South Australia, the Northwest Territories and Saskatchewan, Canada.

Yellowknife is a well-established mining city with experienced mining services and workforce. Trinex is looking forward to building relationships with the local stakeholders and becoming an important part of this emerging lithium district.

The Halo-Yuri Lithium Project covers approximately 450 square kilometres and comprises 37 contiguous claims. It is located approximately 250 kms northeast of Yellowknife on the Gahcho Kue annual winter road which provides good access for drilling and is within a few hundred metres of the 'OIG' spodumene occurrence. Historically, exploration on the project has focused on diamonds with little or no previous work on pegmatites albeit there is documented spodumene bearing pegmatites with numerous unexplored targets.

As the Project is located on the barren-lands, vegetation clearing will be limited. Water for drilling will be drawn from local water sources. Water use will be below 99 cubic meters per day, so a water licence is not required. Water will be sourced from Aylmer Lake and other lakes within the Mineral Claims.

The Project area falls within the Taiga shield high subarctic ecoregion which is characterized by bedrock with shrub and lichen tundra.

Exploration across the Project will include surface sampling, geological mapping and drill programs. The drill program will start upon approval of a Type A Land Use Permit. Clearing of vegetation is unlikely but may be required on drill pads and on skid trails during summer exploration. Water for drilling will be drawn from several localities within the Lake systems across the project area. Water use will be below 99 m<sup>3</sup> per day, so a water license is not sought. A camp will be established to accommodate up to 20 people at a site close to the Winter Road, amenable to both summer and winter use and aircraft access.

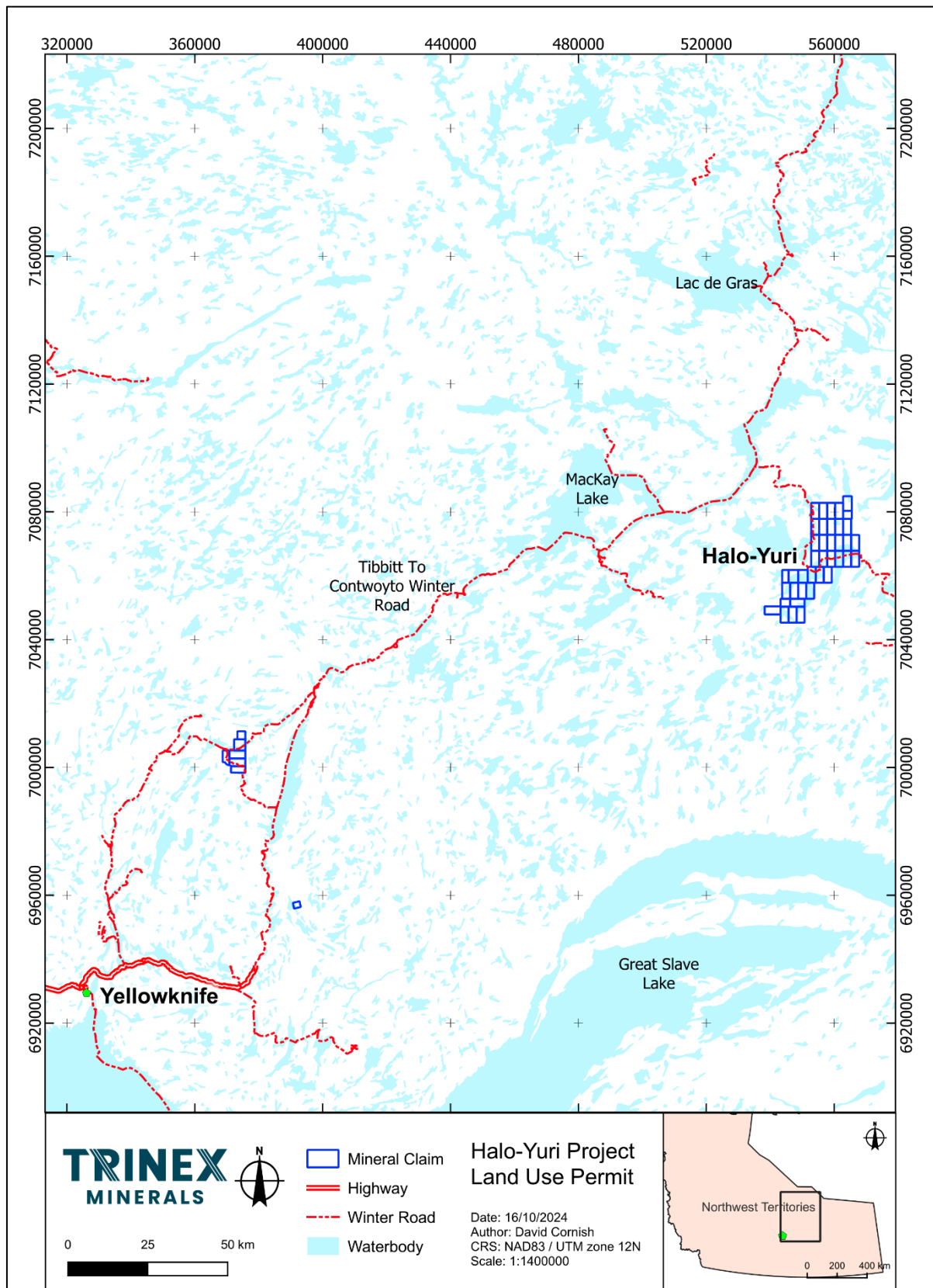


Figure 1: Halo-Yuri Project location map.



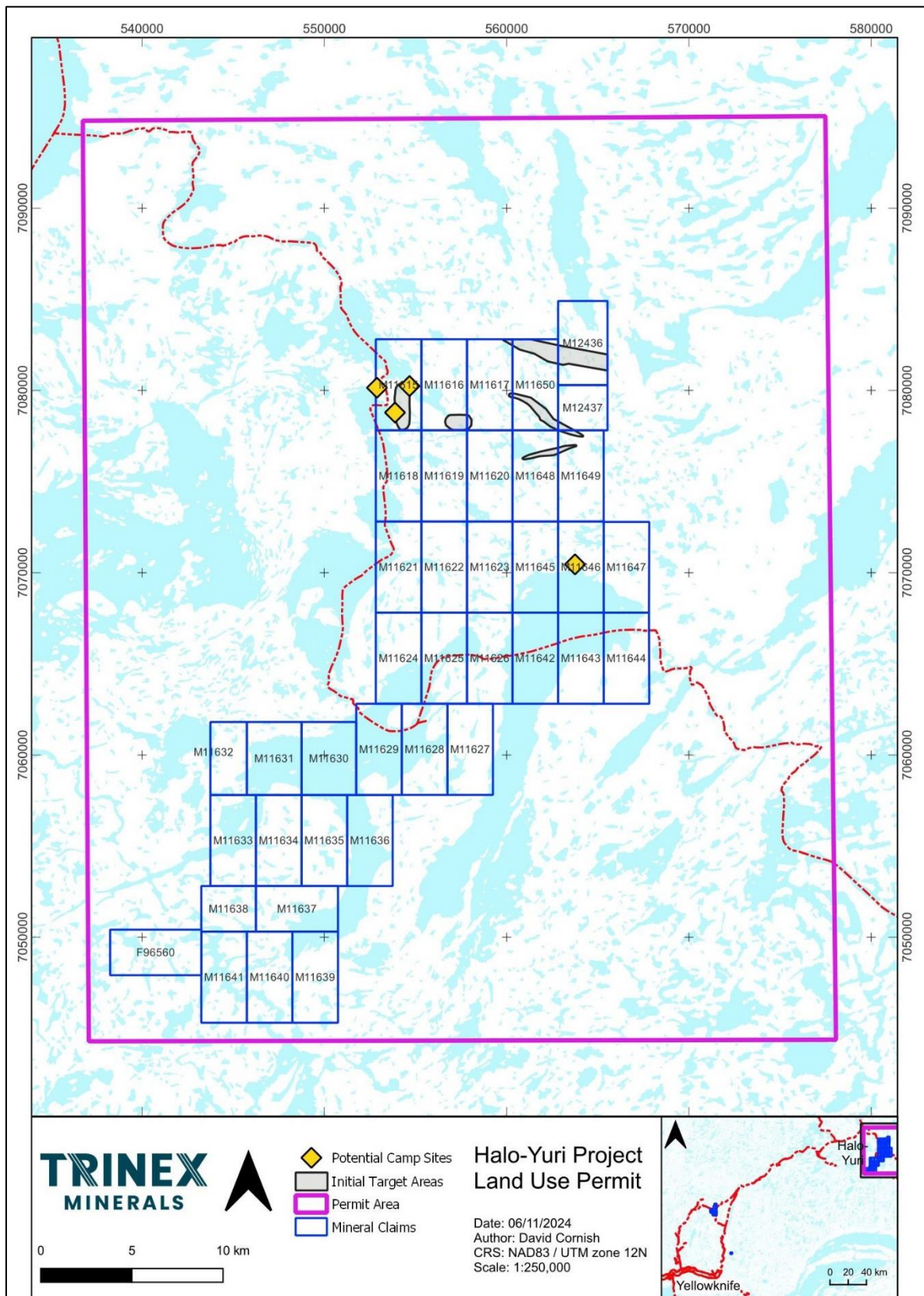


Figure 2: Halo-Yuri project area showing Land Use Permit application boundary, initial drilling target areas and potential camp site locations.

### 3. AFFECTED PARTIES

The parties affected by the project and their contact information are listed in Table 1.

**Table 1: Affected Parties and Contact Details**

Organisation	Contacts	Contact Information
<b>First Nations Groups</b>		
Deninu Kue First Nation (DKFN)	Sam O'Reilly Manager Lands and Environment Carol Ann Chaplin Senior Administrative Officer Kelsey Kimble IMA Coordinator	<a href="mailto:lands@dkfn.ca">lands@dkfn.ca</a> 867-394-4335 <a href="mailto:sao@dkfn.ca">sao@dkfn.ca</a> 867-394-4335 <a href="mailto:ima@dkfn.ca">ima@dkfn.ca</a> 867-394-4335
Fort Resolution Metis Council	Shawn McKay Manager Environment and Lands	<a href="mailto:frmcenvironment@northwestel.net">frmcenvironment@northwestel.net</a>
Lutselk'e Dene First Nation (LKDFN)	Tas-Tsi Catholique Manager Wildlife, Lands and Environment Memory Murefu Senior Administrative Officer	<a href="mailto:lkdfnlands@gmail.com">lkdfnlands@gmail.com</a> 867-370-3820 <a href="mailto:sao.lkdfn@gmail.com">sao.lkdfn@gmail.com</a> 867-675-3707
North Slave Metis Alliance (NSMA)	Alan Alex Lead Regulatory Officer Noah Johnson Environment Manager	<a href="mailto:Alan.Alex@nsma.net">Alan.Alex@nsma.net</a> 867-873-6762 <a href="mailto:Noah.Johnson@nsma.net">Noah.Johnson@nsma.net</a> 867-873-6762
NWT Metis Nation (NWTMN)	Lorne Napier Manager Lands and Resources (Fort Smith Office) Shawn McKay Manager Lands and Resources (Fort Resolution Office)	<a href="mailto:lands@nwtmetis.ca">lands@nwtmetis.ca</a> 867-872-2770 <a href="mailto:frmcenvironment@northwestel.net">frmcenvironment@northwestel.net</a> 867-394-4151
Tłı̨chǫ Government (TG)	Grace McKenzie Mine Liaison Coordinator	<a href="mailto:Grace.Mckenzie@tlicheo.ca">Grace.Mckenzie@tlicheo.ca</a> 867-766-4003 (ext 1007)
Yellowknives Dene First Nation (YKDFN)	Ryan Miller Remediation Project Coordinator	<a href="mailto:Ryanm@ykdene.com">Ryanm@ykdene.com</a> 867-767-4038 or 867-767-4027
<b>Other Groups</b>		
Corporate Registry		<a href="mailto:corporateregistries@gov.nt.ca">corporateregistries@gov.nt.ca</a>
Mackenzie Valley Land and Water Board	Chris Hotson Regulatory Manager Tyree Mullaney Regulatory Specialist	<a href="mailto:chotson@mvlwb.com">chotson@mvlwb.com</a> 867-766-7459 <a href="mailto:tyree@mvlwb.com">tyree@mvlwb.com</a> 867-766-7464



Government of the NWT – Dept of Lands	Clint Ambrose Manager, Resource Management (Inspector)	<a href="mailto:Clint_ambrose@gov.nt.ca">Clint_ambrose@gov.nt.ca</a> 867-446-0769
Government of the NWT – Client Service and Community Relations Unit	Mike Byrne Resource Pathfinder Mark Paddey	<a href="mailto:Mike_Byrne@gov.nt.ca">Mike_Byrne@gov.nt.ca</a> 867-444-9644 <a href="mailto:Mark_Paddey@gov.nt.ca">Mark_Paddey@gov.nt.ca</a> 867-767-9208
Prince of Wales Northern Heritage Centre	Glen Mackay Territorial Archaeologist	<a href="mailto:Glen_mackay@gov.nt.ca">Glen_mackay@gov.nt.ca</a>
GNWT Environment and Climate Change		<a href="mailto:WMMP@gov.nt.ca">WMMP@gov.nt.ca</a> 867-767-9237 (ext 53227 or 8) (Queries re Wildlife Management and Monitoring Plans)
Mining Recorders Office	Jessica Bos Mining Recorder	<a href="mailto:Jessica_bos@gov.nt.ca">Jessica_bos@gov.nt.ca</a> 867-767-9210 (ext 63175) <a href="mailto:Miners@gov.nt.ca">Miners@gov.nt.ca</a>
NWT and Nunavut Chamber of Mines	Karen Costello Executive Director	<a href="mailto:Karen.costello@miningnorth.com">Karen.costello@miningnorth.com</a> 867-873-5281 <a href="mailto:info@miningnorth.com">info@miningnorth.com</a>
Rio Tinto Tibbitt-Contwoyto Winter Road	Barry Henkel Director, Winter Road Operations Rio Tinto Diavik Diamond Mine	<a href="mailto:Barry.henkel@riotinto.com">Barry.henkel@riotinto.com</a> 867-446-2912 867 669-6500 (ext 6561)
Debeers Group Gahcho Kue Spur Road	Kelly Brenton	<a href="mailto:Kelly.brenton@debeersgroup.com">Kelly.brenton@debeersgroup.com</a>

#### 4. ENGAGEMENT TRIGGERS

Triggers to engagement over the life of the Project and methods that will be used in this engagement is summarised in Table 2.

For engagement to be successful, parties must have an opportunity to be informed, provide feedback, and be confident that their input is being considered. This requires that issues raised by parties are documented, tracked, and responded to. A summary of all engagement undertaken to date is provided in the Engagement Strategy Log.

Engagement Trigger	Purpose for Engagement	Method to Engage
<b>Pre-application engagement</b>	<b>To respect</b> Indigenous governments and leaders. <b>To establish</b> meaningful relationships with Indigenous leaders.	Email  Follow up phone calls

	<p><b>To present</b> our lithium project at _____ and <b>to listen to feedback</b>. The presentation will touch on the following: the potential it has, historical context, initial ground truthing activities, project description for drilling, next steps after data collection, and to discuss approach to Indigenous and public engagement in initial exploration activities (i.e., Method for updates, two-way communications, &amp; transparency, etc.).</p> <p><b>To gain an understanding</b> of Indigenous views on proposed project.</p> <p><b>To inform</b> Ingraham Trail cabin owners of exploration activities.</p> <p><b>To inform, discuss, and work with</b> various individuals, parties, and governments to ensure completeness of various components to the Land Use Application.</p>	In person presentations and meetings
<b>Permit application</b>	Conduct discussions with affected parties prior to application submission.	Email/phone call
<b>Prior to start of drilling activities</b>	Notify affected parties of commencement of exploration activities.	Email/phone call
<b>Helicopter use in area</b>	Notify when we will be flying helicopters in area.	Email
<b>Update on progress of project</b>	Provide an update on progress & advise of any issues.	Email/phone call
<b>Any modifications or amendments to LUP which will change scope of work</b>	Notify of any changes to scope of work.	Email/phone call
<b>Occurrence of spill</b>	Inform regulators & parties as required by authorizations.	Email/phone call
<b>Discovery of suspected archaeological find, historical or burial site</b>	Inform regulators & parties as required by authorizations.	Email/phone call and in-person meetings as required.

<b>End of drilling activities</b>	Notify affected parties of end of exploration activities and notify when to present findings.	Email/phone call
<b>Updates on results of drilling; corporate developments and discuss approach moving forward</b>	Present summary of findings and present potential path forward.	Email In-person meetings

## REFERENCES

LWB (Land and Water Boards of the Mackenzie Valley). 2023. Engagement and Consultation Policy. January 2023. <https://mvlwb.com/media/1835/download?inline>

LWB. 2018. Engagement Guidelines for Applicants and Holders of Water Licenses and Land Use Permits. June 2018. <https://mvlwb.com/media/814/download?inline>

Weghàà Ełeyatits'eedi: Guidelines For Proponents Of Development. 2022. Tłıchǫ Government. 16 November 2022.  
[https://www.tlicho.ca/sites/default/files/documents/government/2022\\_11\\_14\\_tlicho\\_government\\_guidelines\\_for\\_land\\_use.pdf](https://www.tlicho.ca/sites/default/files/documents/government/2022_11_14_tlicho_government_guidelines_for_land_use.pdf)