

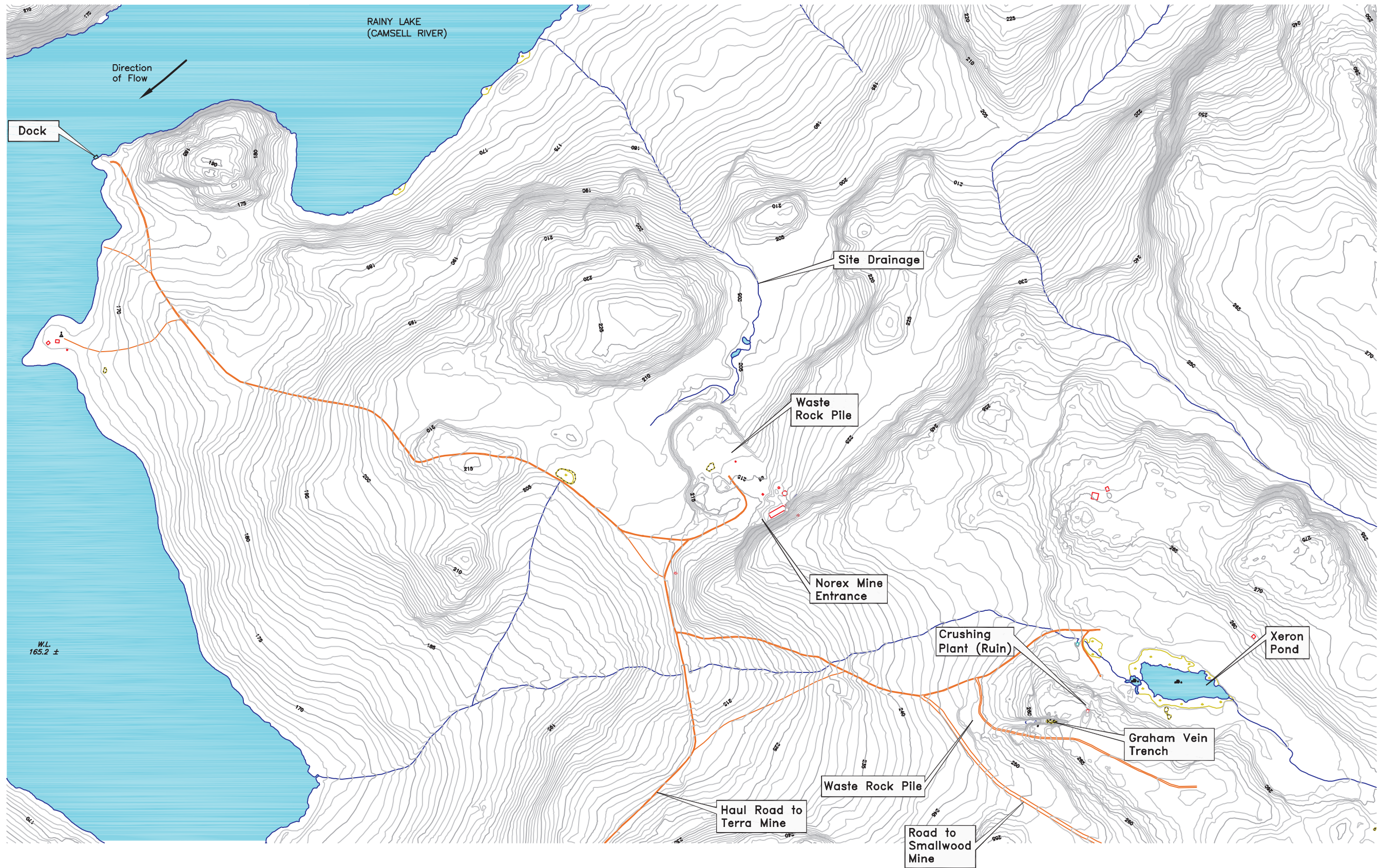


# Annex A-1

**Report: Silver Bear Mines Remedial Action Plan with  
Project Update – PART 3**



File Ref: J:\01 SITE\Silver Bear NT\MCAD\REPORT FIGURES\Figure 3.3.1.dwg



 <b>SENE Consultants</b>	 <b>SRK Consulting</b> <i>Engineers and Scientists</i> Vancouver B.C.	 <b>Indian and Northern Affairs Canada</b>	Norex Mine and Graham Vein		
			Site Plan		
			SILVER BEAR MINES REMEDIAL ACTION PLAN		
SRK JOB NO.: 1CP001.506		DATE: Mar. 2007		APPROVED: SRS	FIGURE: 3.4.1
FILE NAME: Figure 3.3.1.dwg					

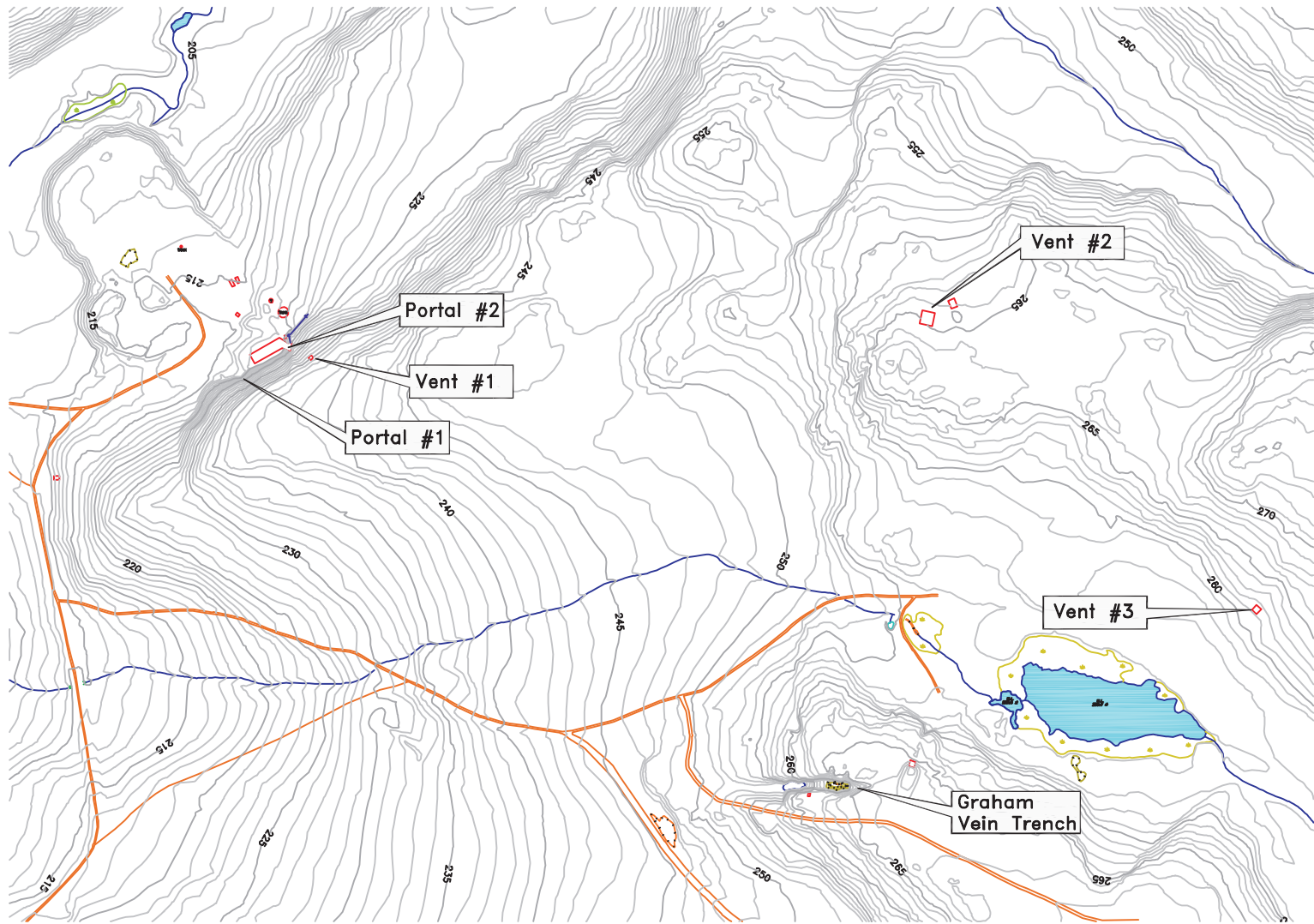


File Ref: J:\01 SITES Silver Bear NT\ACAD\REPORT FIGURES\Figure 3.3.1.dwg



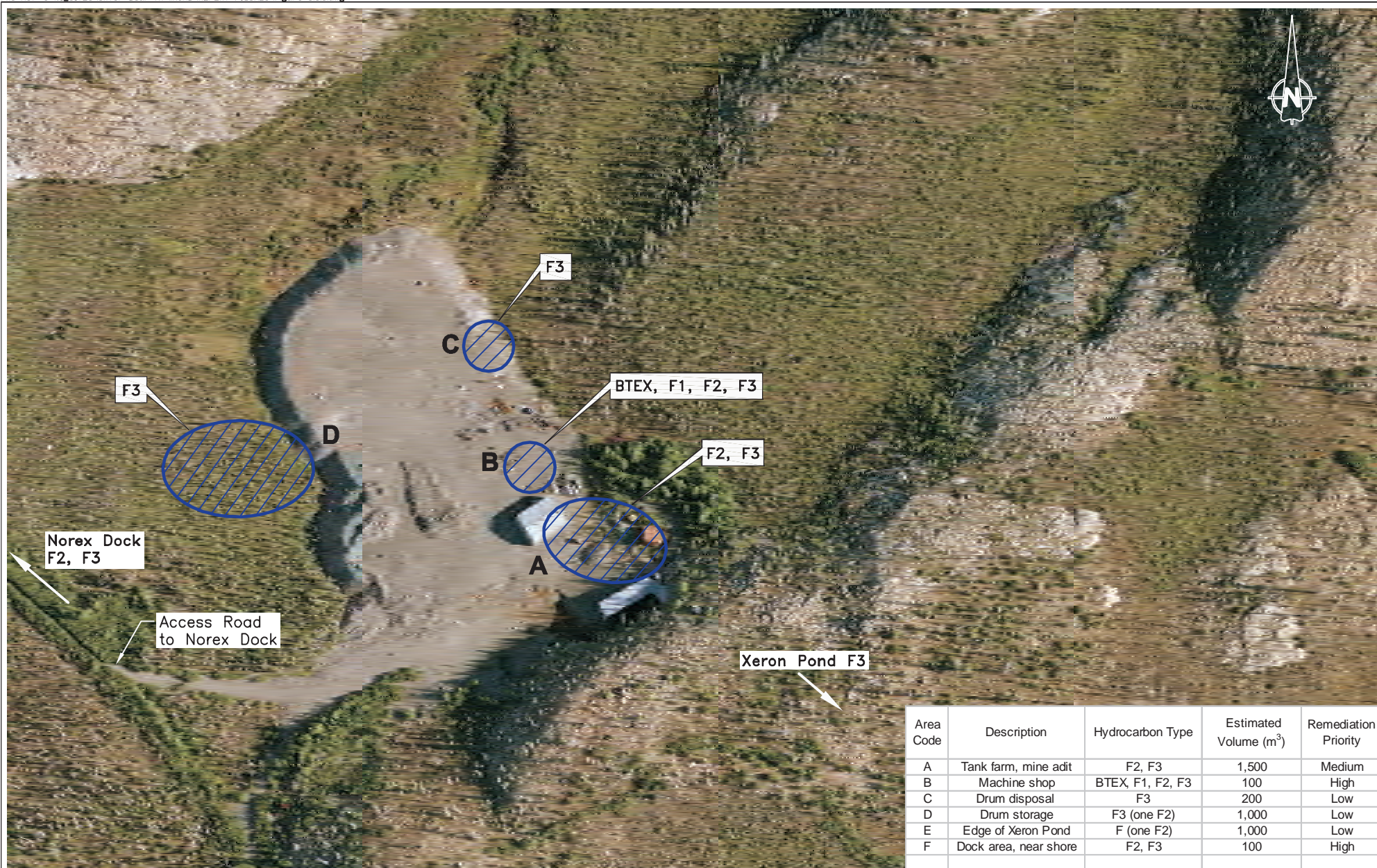
 <b>Senes Consultants</b>	 <b>SRK Consulting</b> <i>Engineers and Scientists</i> <small>Vancouver B.C.</small>	 <b>Indian and Northern Affairs Canada</b>	Norex Mine and Graham Vein		
			Aerial Photo		
			DATE: Mar. 2007	APPROVED: SRS	FIGURE: 3.4.2





 <b>SENES Consultants</b>	 <b>SRK Consulting</b> Engineers and Scientists Vancouver B.C.	 <b>Indian and Northern Affairs Canada</b>	Norex Mine		
			Mine Openings		
	SRK JOB NO.: 1CP001.506 FILE NAME: Figure 3.3.3.dwg		SILVER BEAR MINES REMEDIAL ACTION PLAN	DATE: Mar. 2007	APPROVED: SRS





Scale 0 50 100 m

**SRK Consulting**  
Engineers and Scientists  
VANCOUVER

**SENE**  
SENES Consultants



**Indian and Northern  
Affairs Canada**

**SILVER BEAR MINES  
REMEDIAL ACTION PLAN**

**Norex Mine**

**Hydrocarbon Contaminated  
Areas**

DATE:

Mar. 2007

APPROVED:

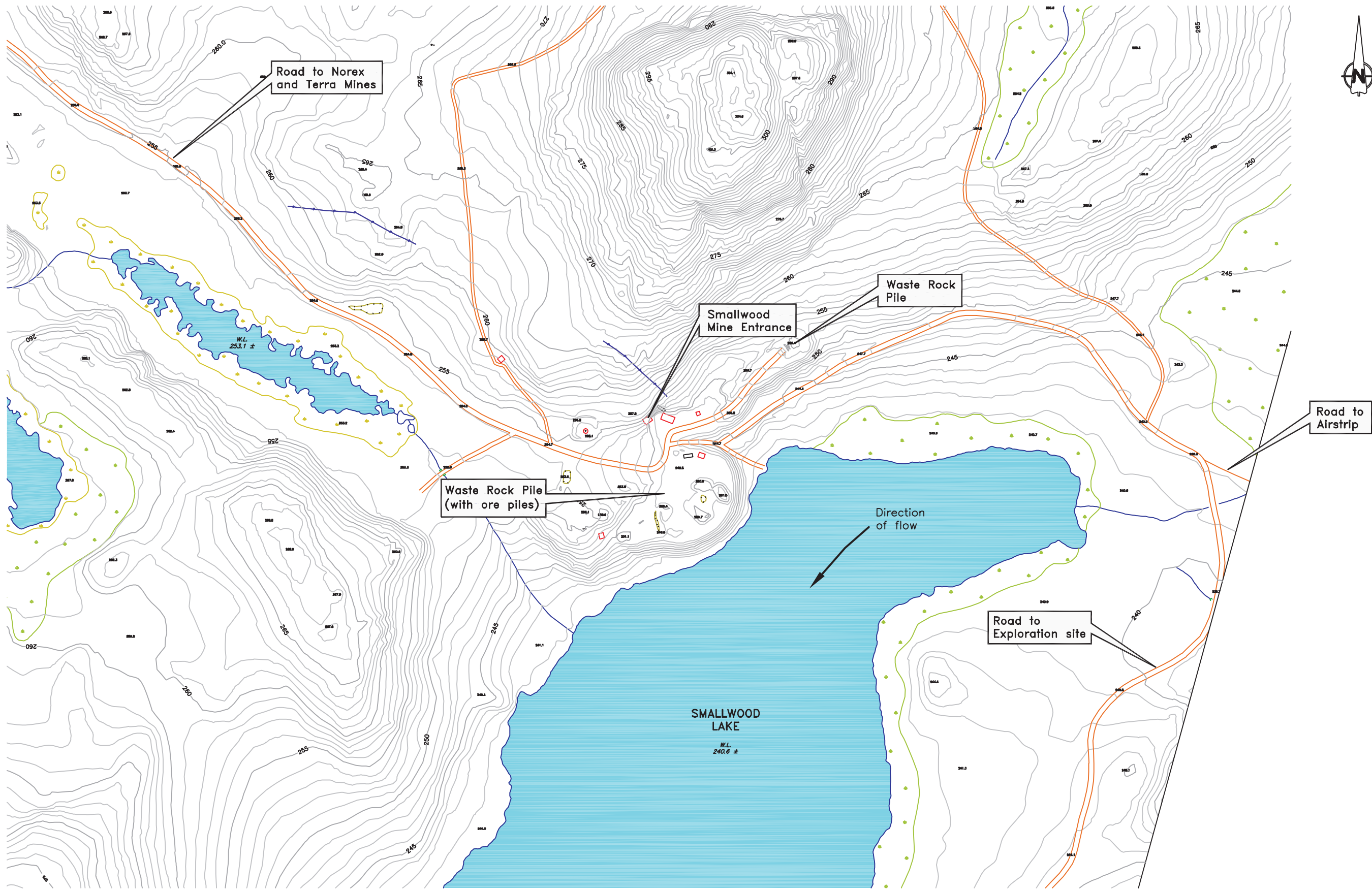
SRS

FIGURE:

3.4.4



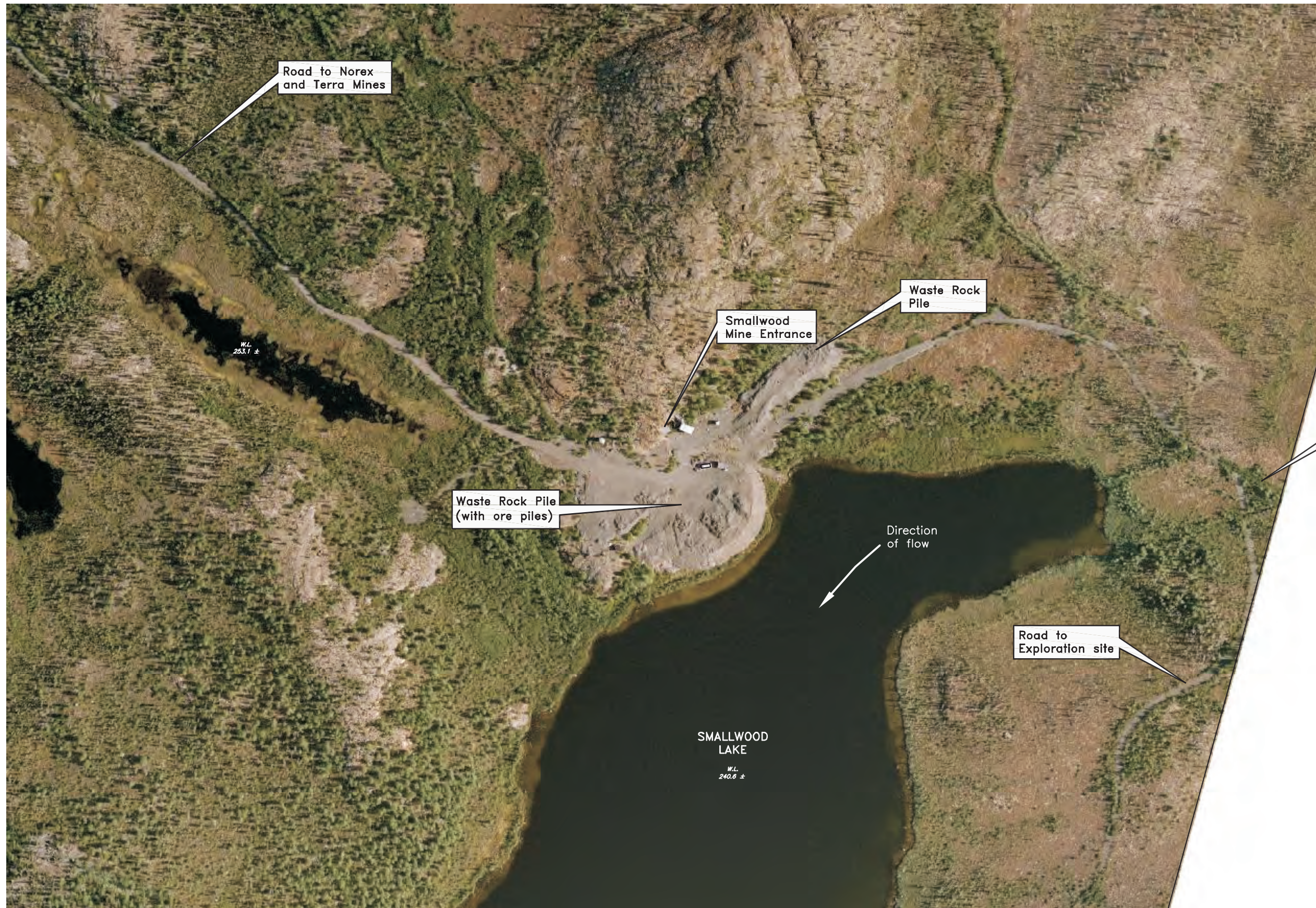
File Ref: J:\01\_SITES Silver Bear NT\ACAD\REPORT FIGURES\Figure 3.3.1.dwg



 <b>SENES Consultants</b>	 <b>SRK Consulting</b> <i>Engineers and Scientists</i> <small>Vancouver B.C.</small>	 <b>Indian and Northern Affairs Canada</b>	Smallwood Mine		
			Site Plan		
	SRK JOB NO.: 1CP001.506		SILVER BEAR MINES REMEDIAL ACTION PLAN	DATE:	APPROVED:
FILE NAME: Figure 3.3.1.dwg		Mar. 2007		SRS	3.5.1



File Ref: J:\ML\SITES Silver Bear NT\ACAD\REPORT FIGURES\Figure 3.3.1.dwg



Scale 0 40 80 120 160 200 Metres



Smallwood Mine

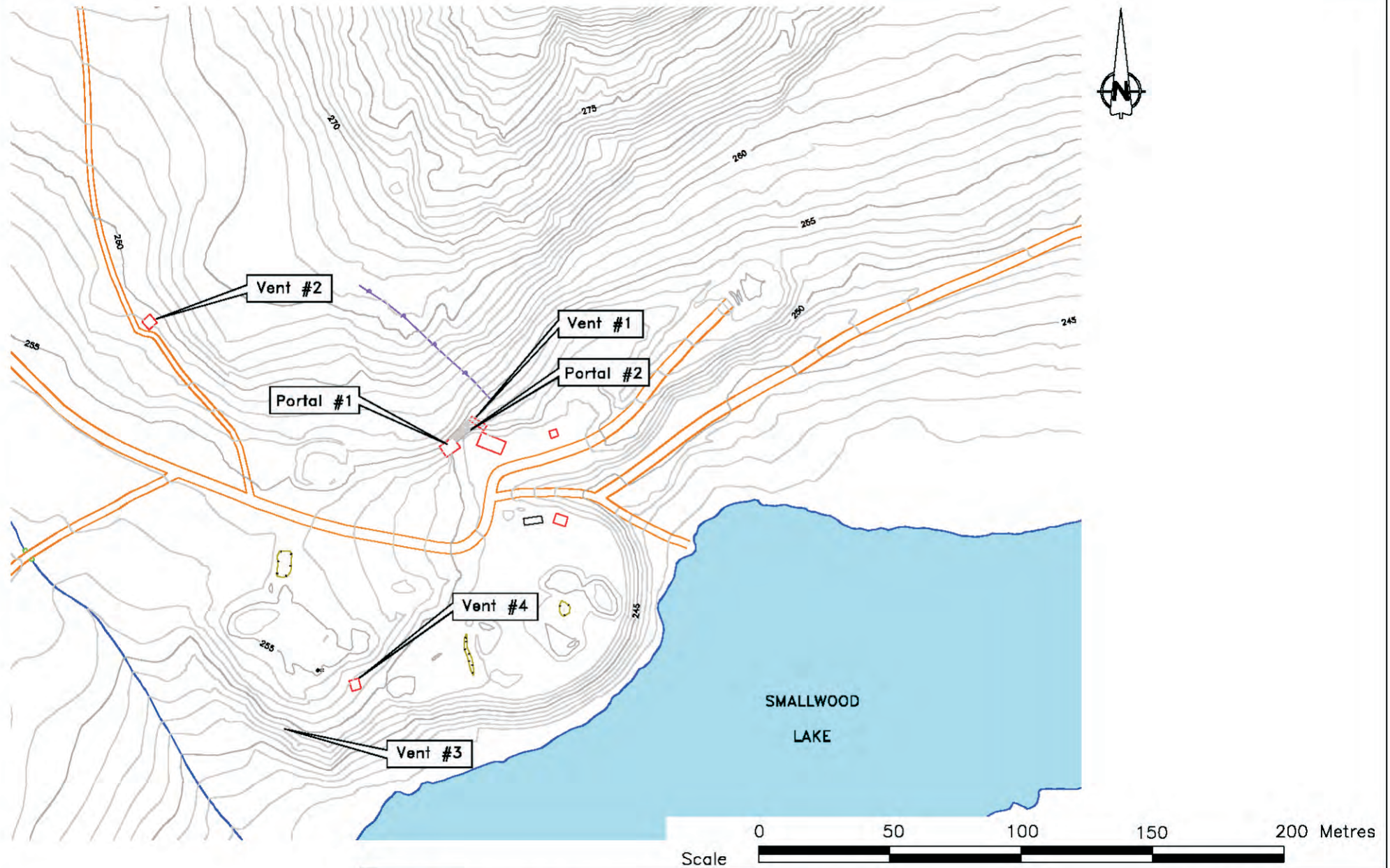
Aerial Photo

SRK JOB NO.: 1CP001.506  
FILE NAME: Figure 3.3.1.dwg

SILVER BEAR MINES  
REMEDIAL ACTION PLAN

DATE:	APPROVED:	FIGURE:
Mar. 2007	SRS	3.5.2





SRK JOB NO.: 1CP001.506  
FILE NAME: Figure 3.3.3.dwg



**Indian and Northern  
Affairs Canada**

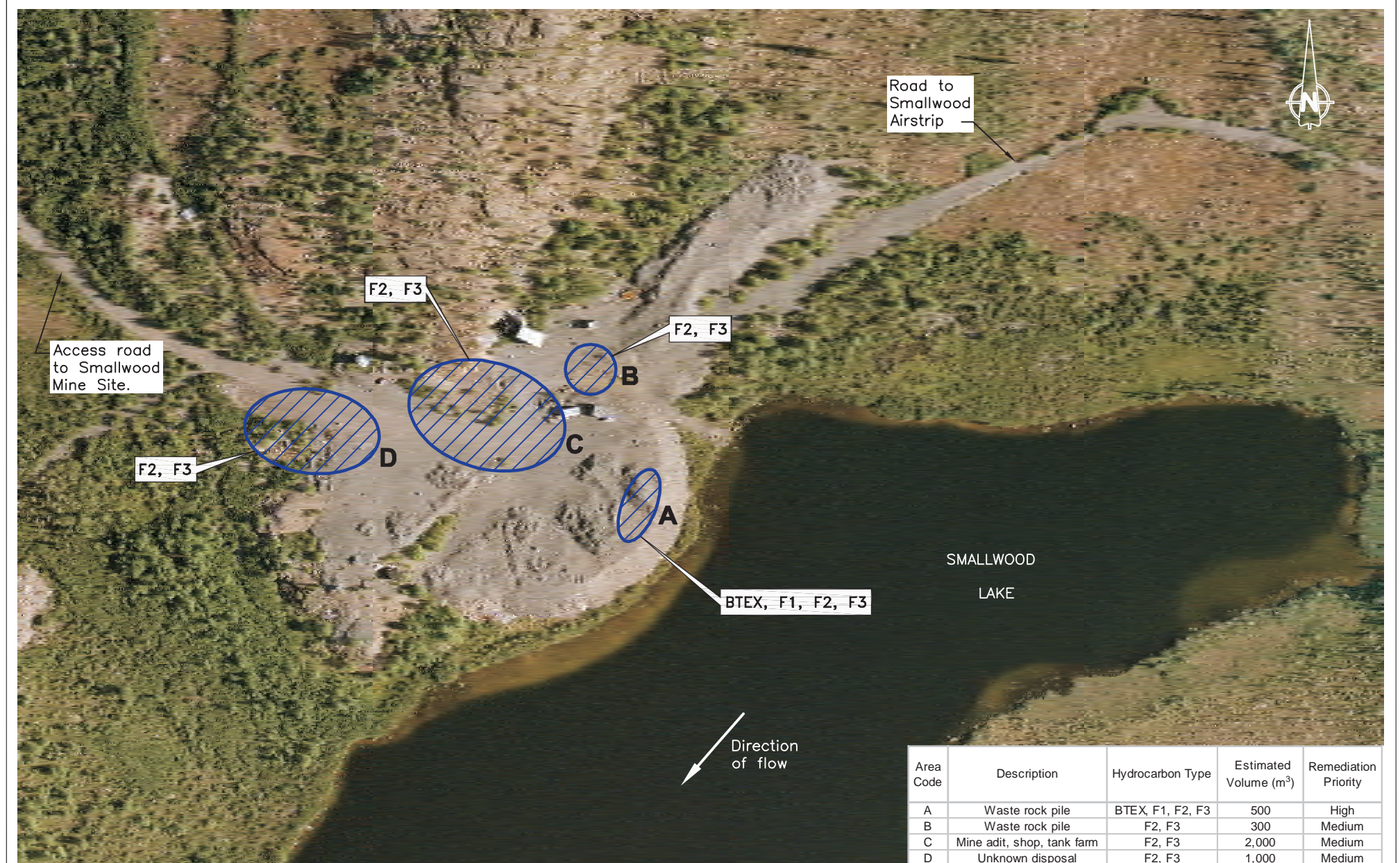
**SILVER BEAR MINES  
REMEDIAL ACTION PLAN**

Smallwood Mine

**Mine Openings**

DATE: Mar. 2007	APPROVED: SRS	FIGURE: 3.5.3
--------------------	------------------	------------------





Area Code	Description	Hydrocarbon Type	Estimated Volume (m <sup>3</sup> )	Remediation Priority
A	Waste rock pile	BTEX, F1, F2, F3	500	High
B	Waste rock pile	F2, F3	300	Medium
C	Mine adit, shop, tank farm	F2, F3	2,000	Medium
D	Unknown disposal	F2, F3	1,000	Medium

Scale 0 50 100 m

**SRK Consulting**  
Engineers and Scientists  
VANCOUVER

**SENEC**  
Consultants



**Indian and Northern  
Affairs Canada**

**SILVER BEAR MINES  
REMEDIAL ACTION PLAN**

**Smallwood Mine**

**Hydrocarbon Contaminated  
Areas**

DATE: Mar. 2007	APPROVED: SRS	FIGURE: 3.5.4
--------------------	------------------	------------------

SRK JOB NO.: 1CP001.506

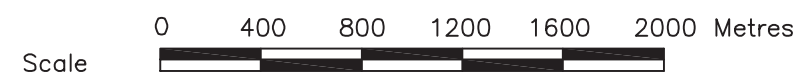
FILE NAME: Figure 3.3.5.dwg





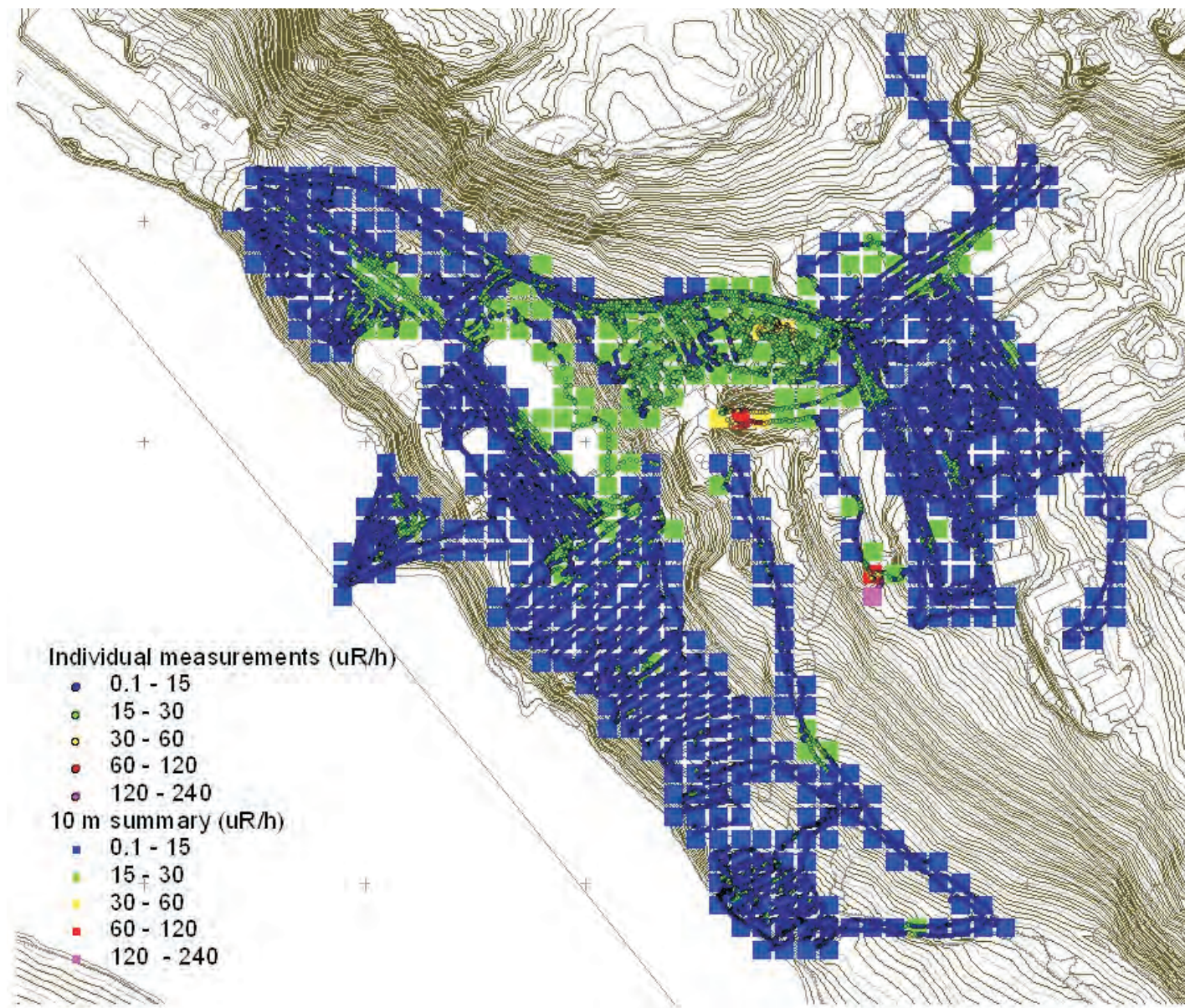
Legend

-  Water Quality Monitoring Sites  
(Off-site Environment) Only.

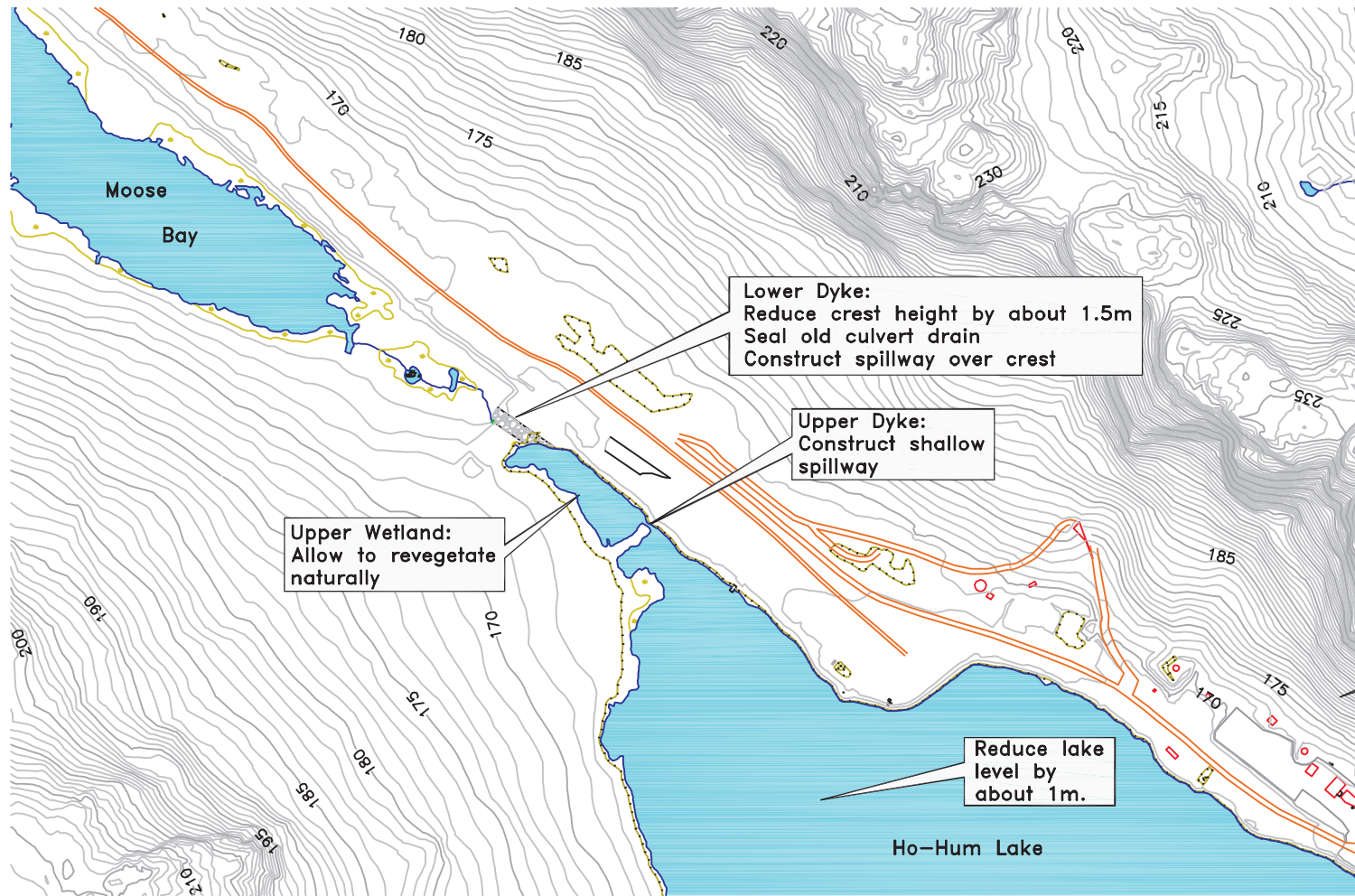


 <b>SENE Consultants</b>	 <b>SRK Consulting</b> <i>Engineers and Scientists</i> <small>Vancouver B.C.</small>	 <b>Indian and Northern Affairs Canada</b>	Silver Bear Mines		
			Water Quality Monitoring Sites		
			DATE: Mar. 07	APPROVED: SRS	FIGURE: 4.2.1
SRK JOB NO.: 1CP001.506		SILVER BEAR MINES REMEDIAL ACTION PLAN			
FILE NAME: Figure 4.2.1.dwg					









SRK JOB NO.: 1CP001.506  
FILE NAME: Figure 6.2.1.dwg



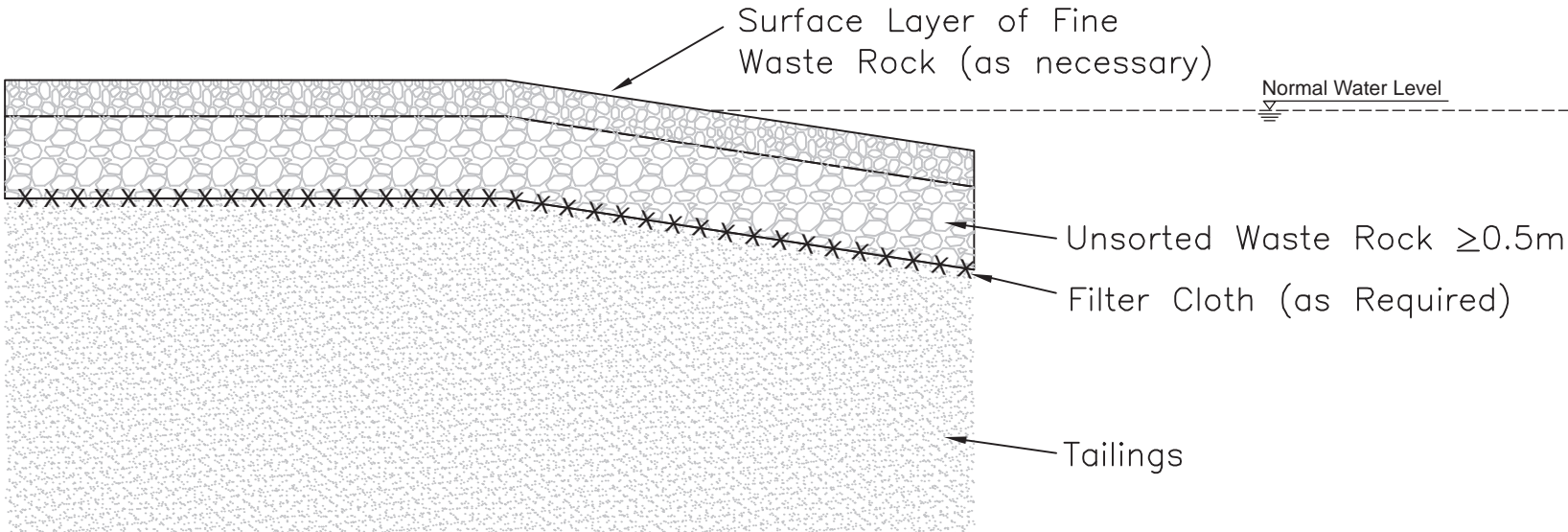
SILVER BEAR MINES  
REMEDIAL ACTION PLAN

Terra Mine

Preferred Remedial Plan for  
Ho-Hum Lake

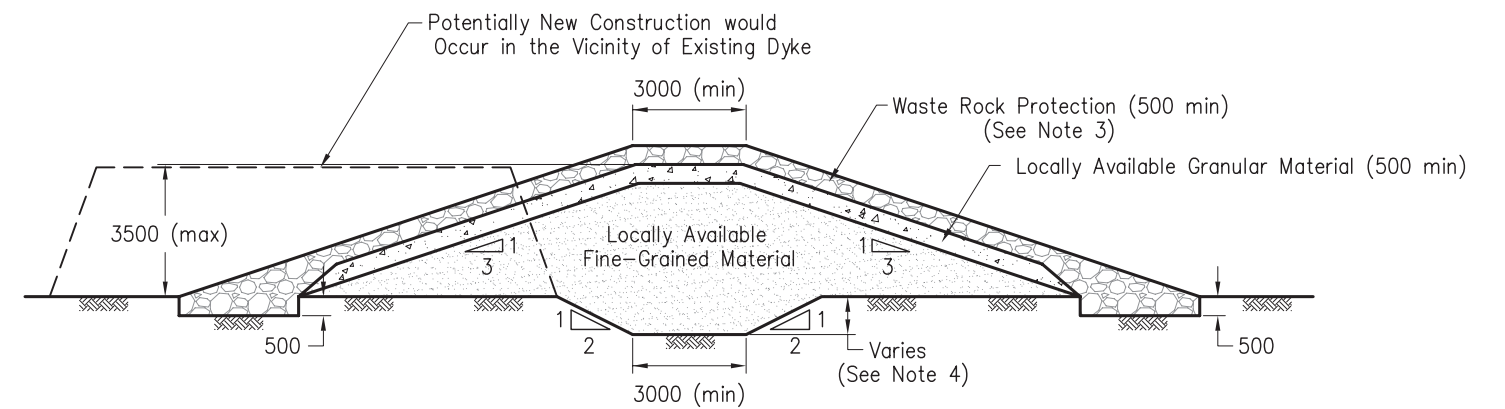
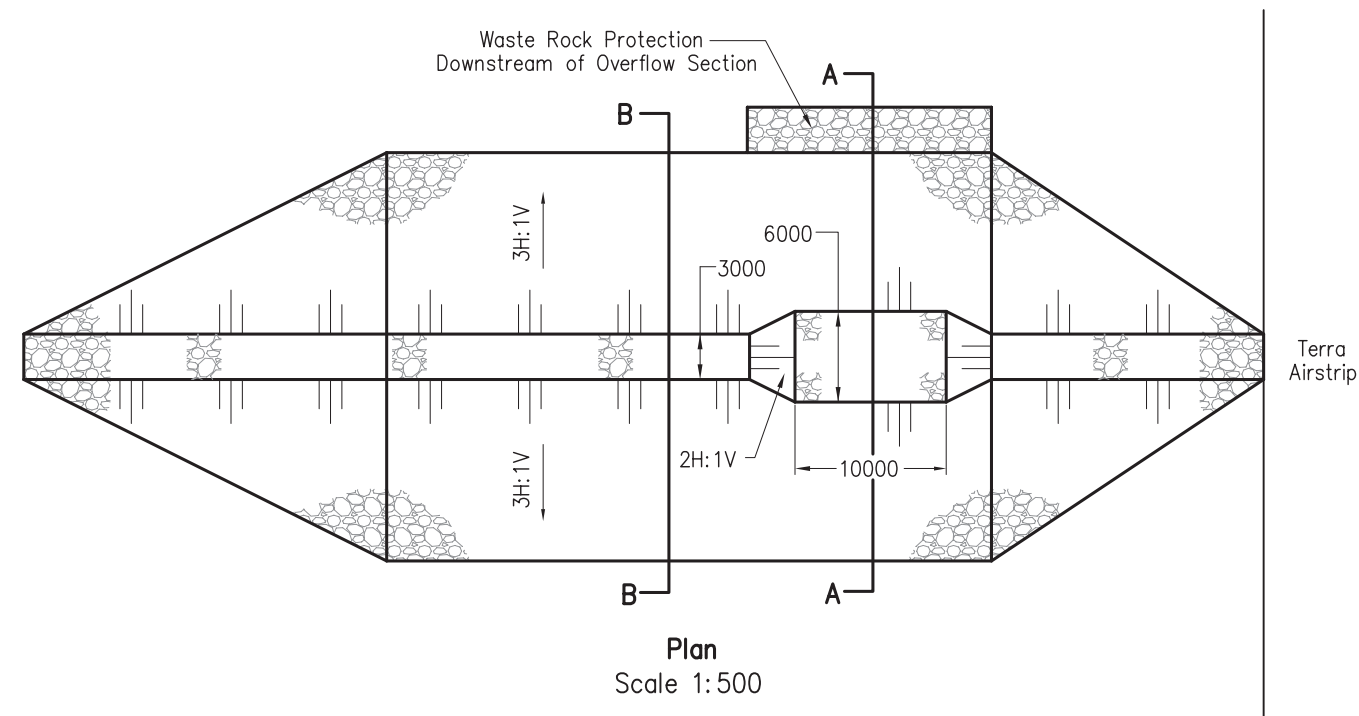
DATE: Mar. 2007	APPROVED: SRS	FIGURE: 6.2.1
--------------------	------------------	------------------





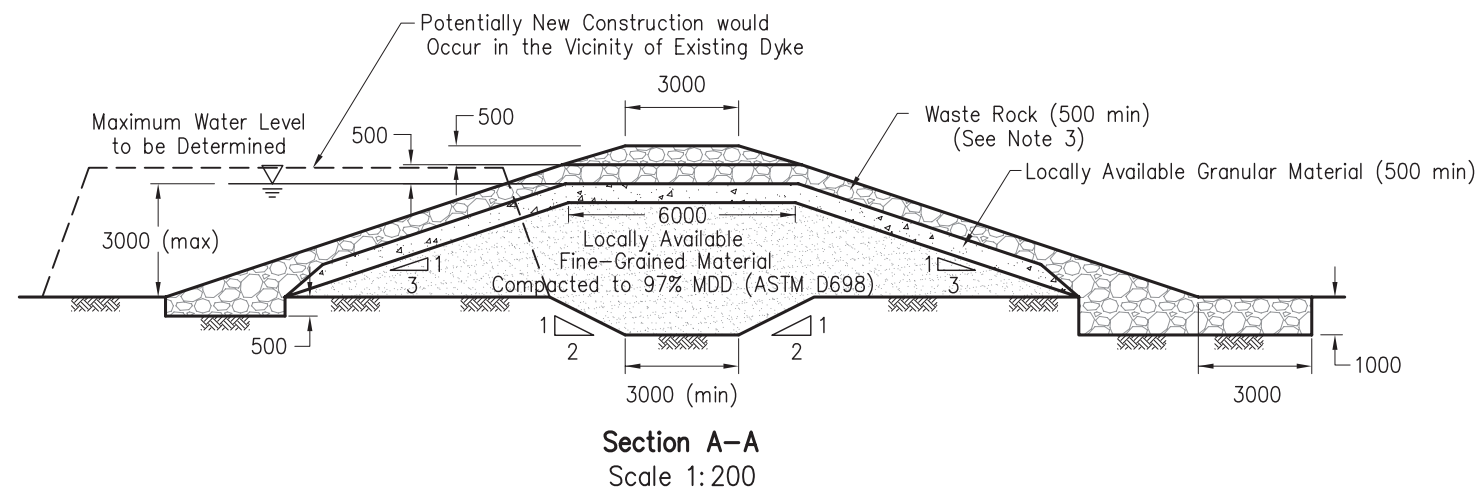
 <b>Senes Consultants</b>	 <b>SRK Consulting</b> <i>Engineers and Scientists</i> Vancouver B.C.	 <b>Indian and Northern Affairs Canada</b>	Silver Bear Mine		
			Conceptual Tailings Cover (Cross Section)		
			DATE: Nov. 2007	APPROVED: SRS	FIGURE: 6.2.2
SRK JOB NO.: 1CP001.506		SILVER BEAR MINES REMEDIAL ACTION PLAN			
FILE NAME: Figure 6.2.2.dwg					





Section B-B  
Scale 1:200

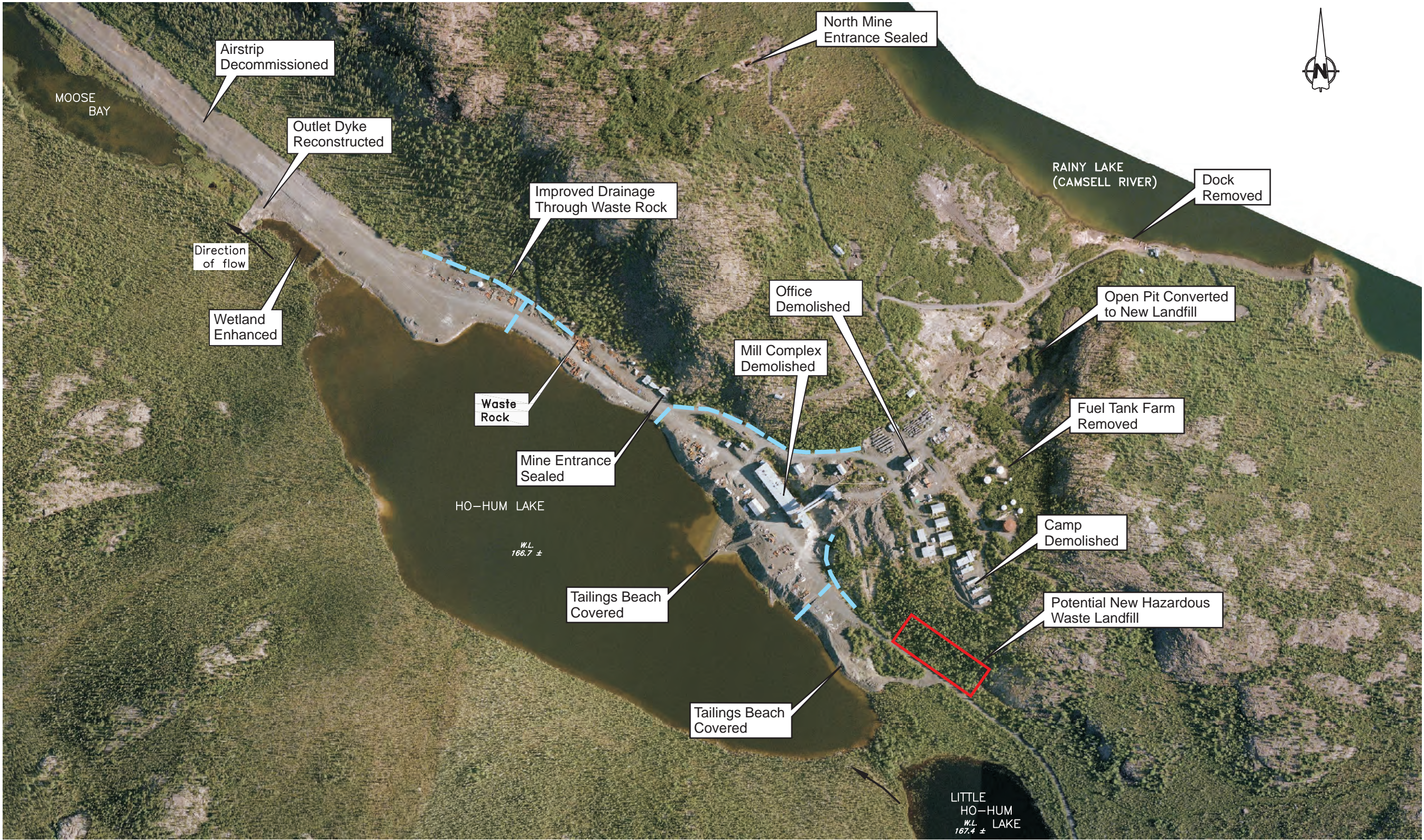
Ho-Hum Lake Dam – Plan & Sections



Notes:

1. All dimensions in mm
2. At Hermandy Lake the embankment protection should consist of well-graded waste rock.
3. At Ho-Hum Lake, the waste rock protection at crest and downstream slope of the overflow section should be well-graded but most of the waste rock pieces should have a minimum size of about 450 mm. The remaining embankment protection should consist of well-graded waste rock.
4. The cutoff trench should extend at least 1 m into the impervious stratum. If bedrock is encountered at shallow depth (less than 1 m), the embankment should be placed directly on the bedrock.

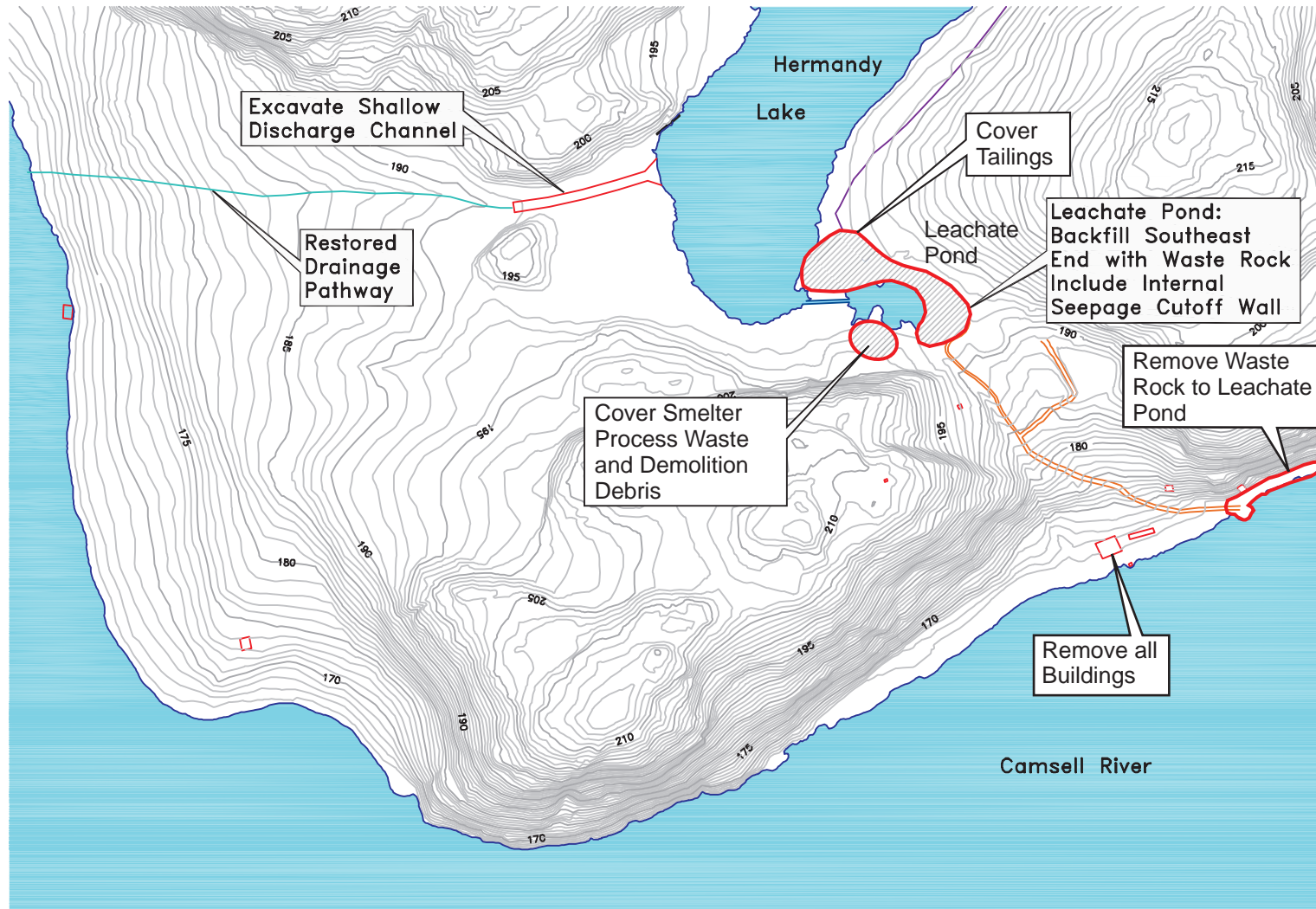




SILVER BEAR MINES  
REMEDIAL ACTION PLAN

Terra Mine		
Overview Terra Mine Closure Plan		
DATE: Nov 2007	APPROVED:	FIGURE: 6.2.4





SRK JOB NO.: 1CP001.506  
FILE NAME: Figure 6.3.1.dwg



**Indian and Northern  
Affairs Canada**

**SILVER BEAR MINES  
REMEDIAL ACTION PLAN**

Northrim Mine

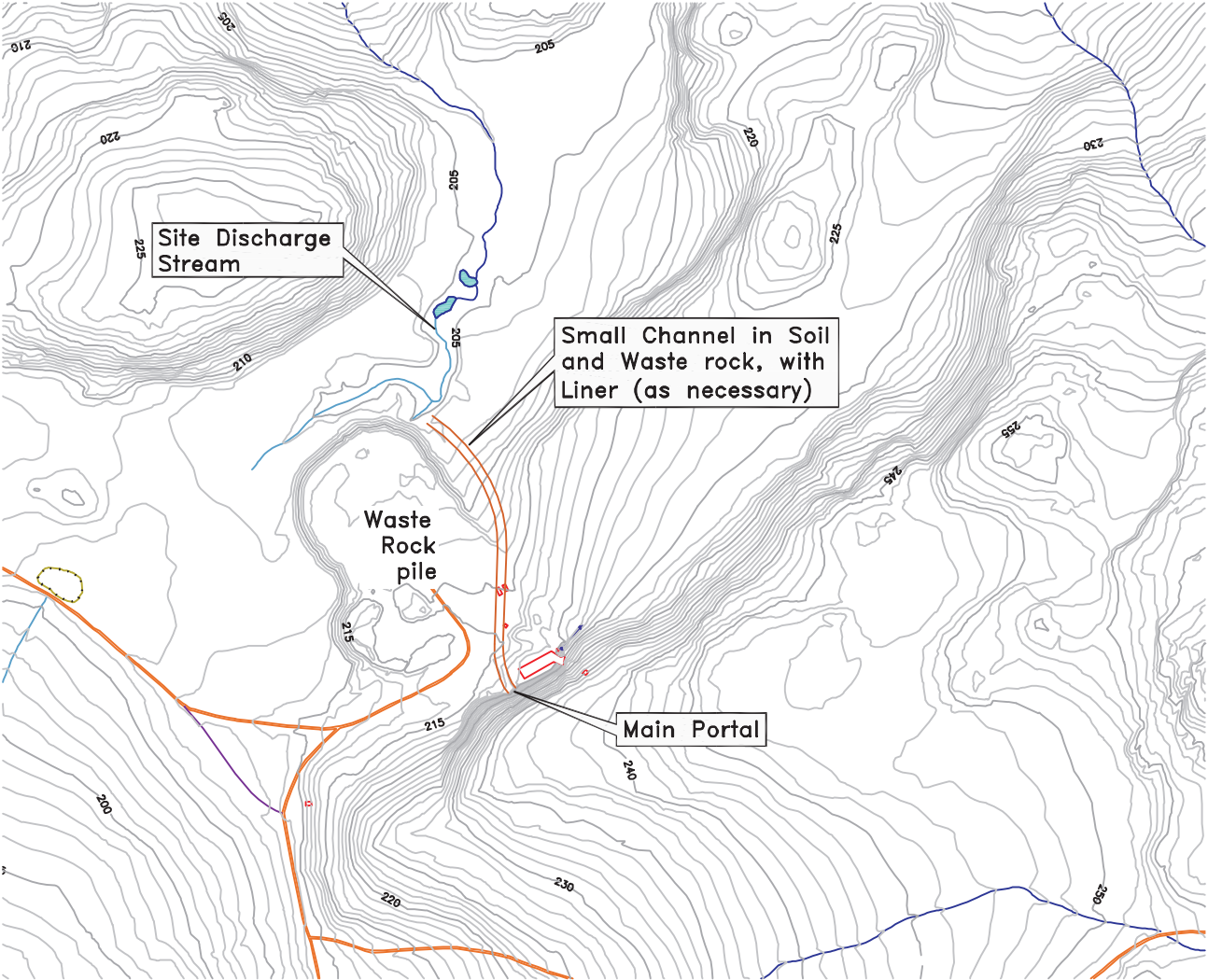
**Preferred Remedial Plan for  
Hermandy Lake Discharge**

DATE:  
Sep 2007

APPROVED:

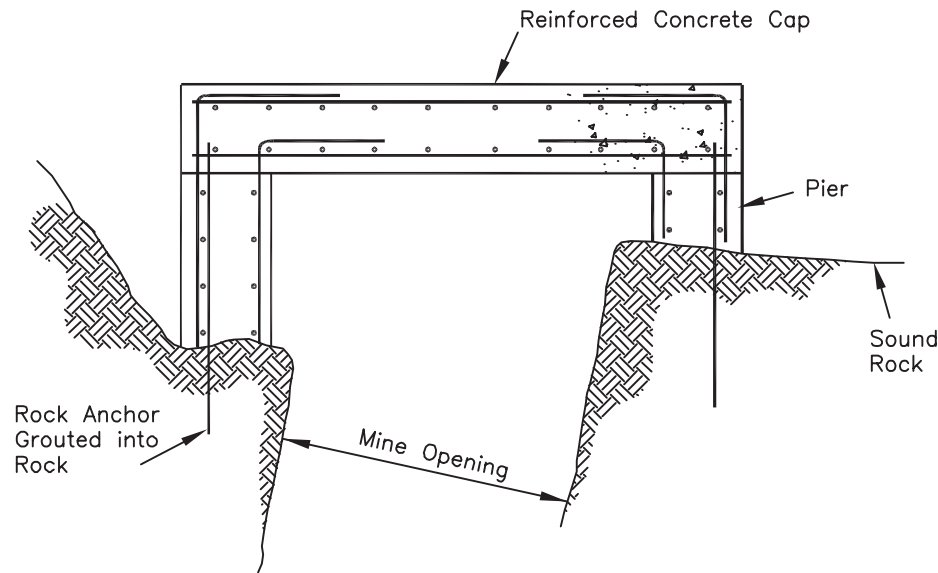
FIGURE:  
6.3.1



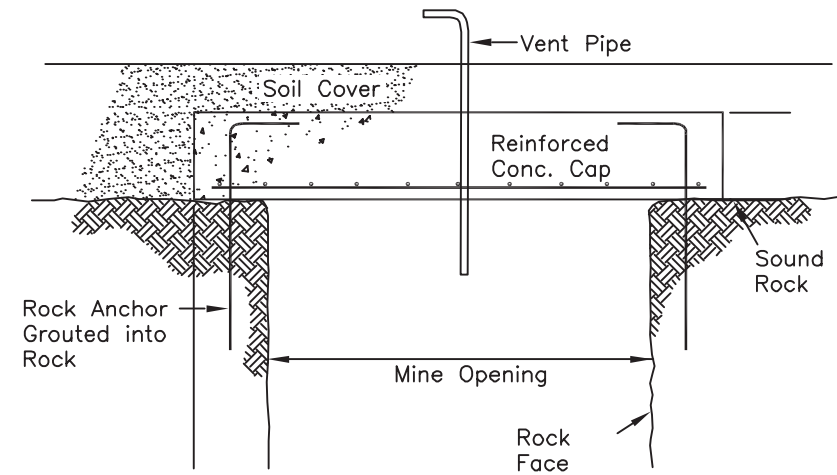


 <b>SENEC Consultants</b>	 <b>SRK Consulting</b> <i>Engineers and Scientists</i> <small>Vancouver B.C.</small>	 <b>Indian and Northern Affairs Canada</b>	Norex Mine		
			Preferred Remedial Plan for Norex Mine Drainage		
			SILVER BEAR MINES REMEDIAL ACTION PLAN		
SRK JOB NO.: 1CP001.506		DATE: Mar. 2007	APPROVED: SRS	FIGURE: 6.4.1	
FILE NAME: Figure 6.4.1.dwg					

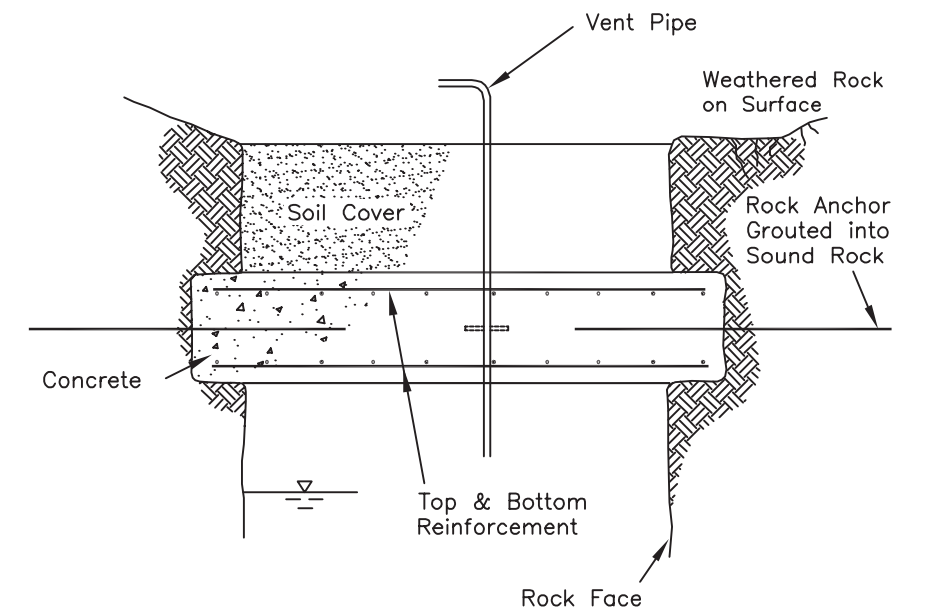




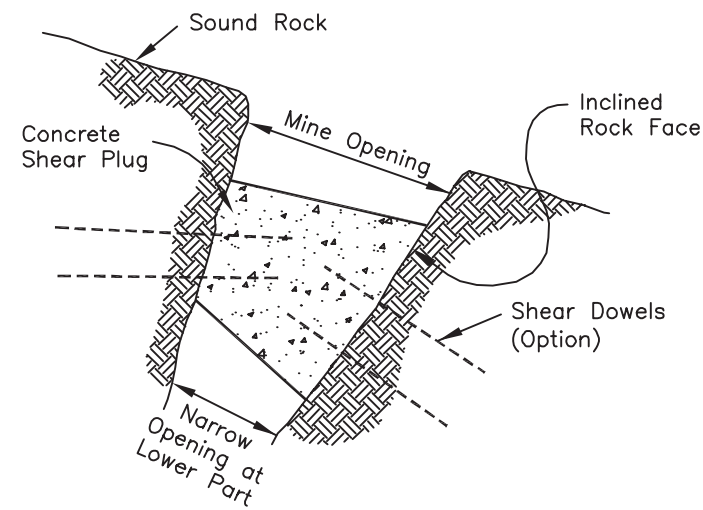
TYPICAL CROSS-SECTION OF CONCRETE CAP ON PIERS  
FOR VERTICAL/INCLINED OPENING



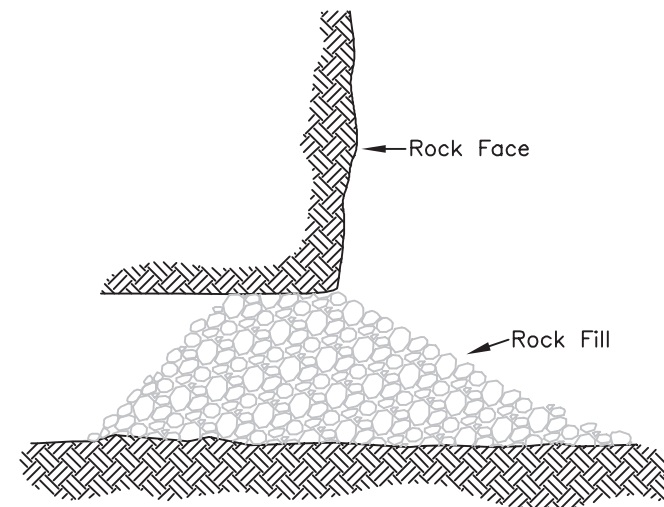
TYPICAL CROSS-SECTION OF CONCRETE  
CAP FOR VERTICAL MINE OPENING



TYPICAL CROSS-SECTION SHOWING  
INTERIOR CAP INSTALLATION

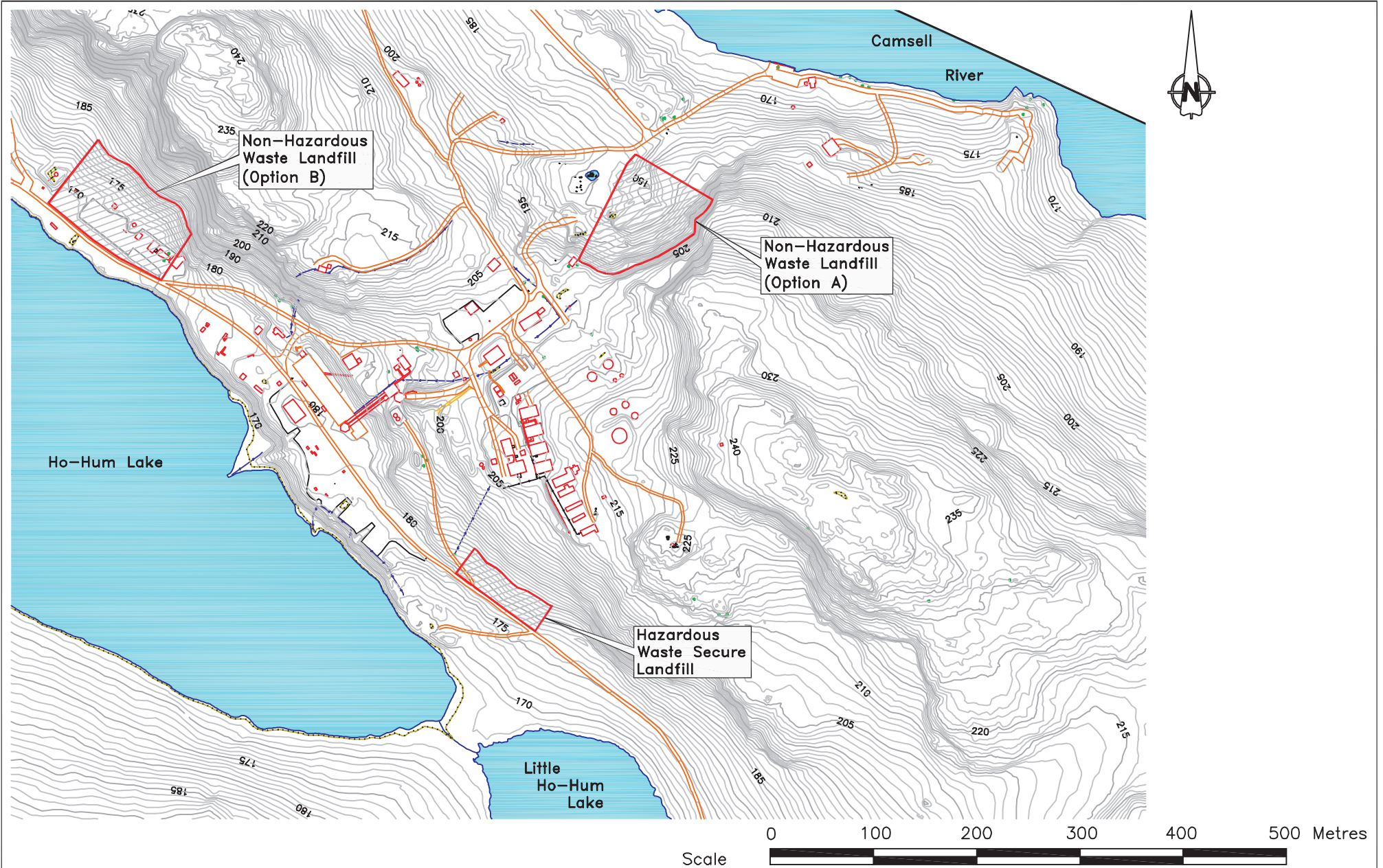


TYPICAL SECTION OF CONCRETE SHEAR  
PLUG FOR SMALL INCLINED MINE OPENING



TYPICAL CROSS SECTION OF ROCKFILL PLUG  
FOR HORIZONTAL MINE OPENING





**SENES**  
Consultants

**SRK Consulting**  
Engineers and Scientists  
Vancouver B.C.

SRK JOB NO.: 1CP001.506  
FILE NAME: Figure 6.2.2.dwg



**Indian and Northern  
Affairs Canada**

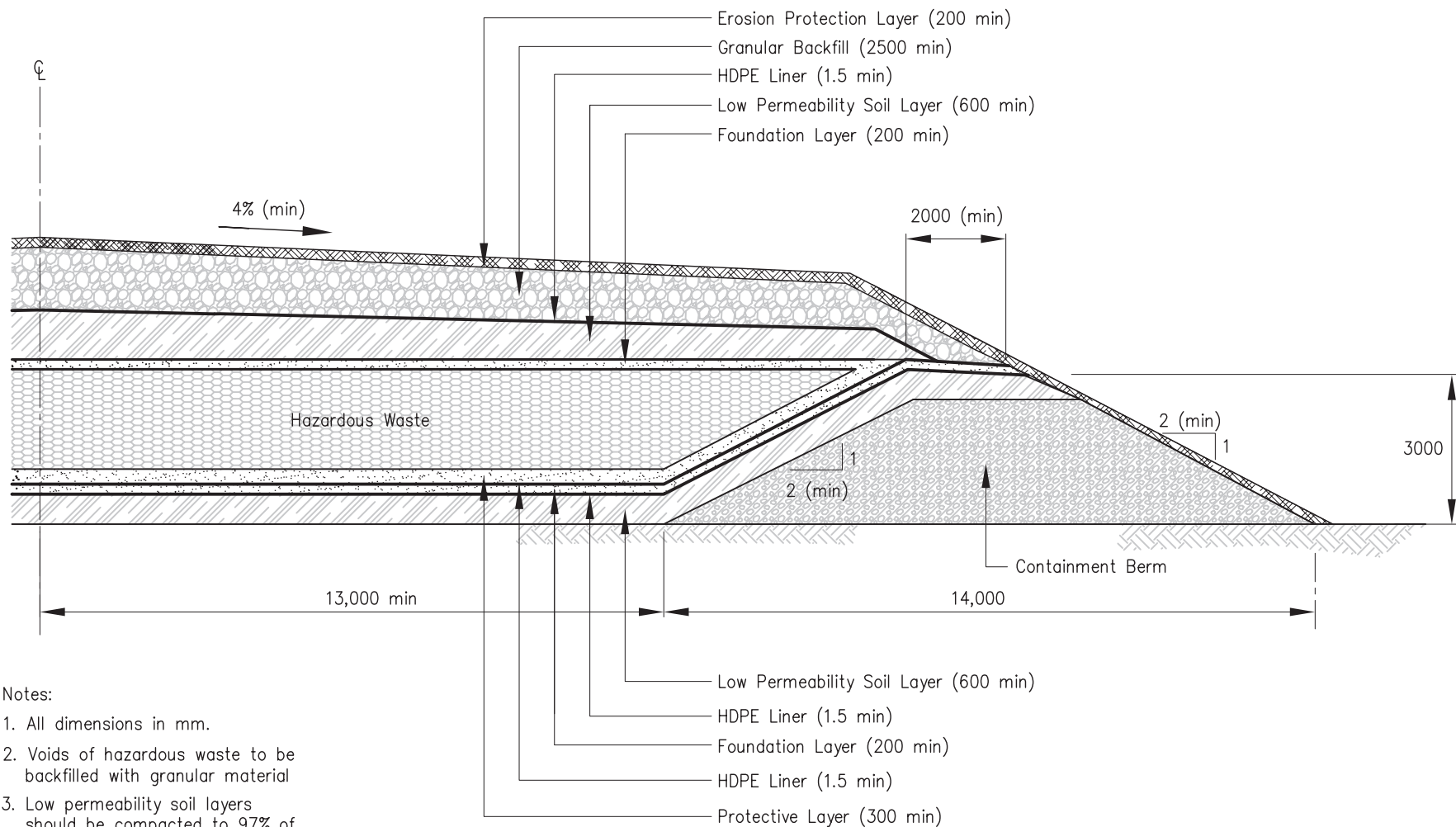
**SILVER BEAR MINES  
REMEDIAL ACTION PLAN**

Terra Mine

**New Landfill Locations**

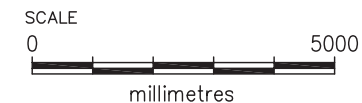
DATE: Mar. 2007	APPROVED: SRS	FIGURE: 6.7.1
--------------------	------------------	------------------



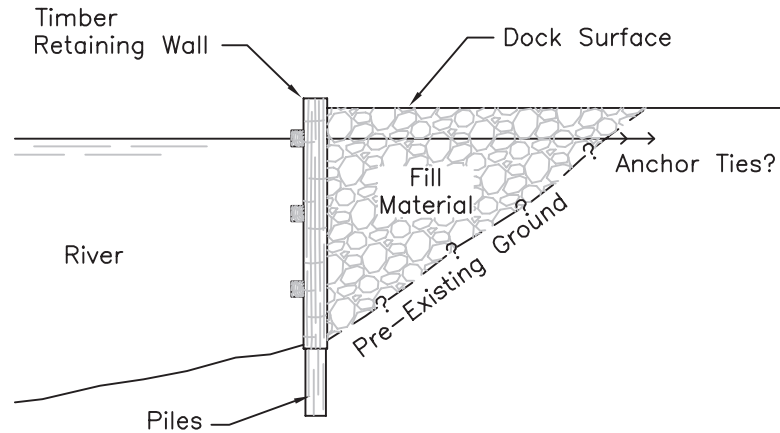


Notes:

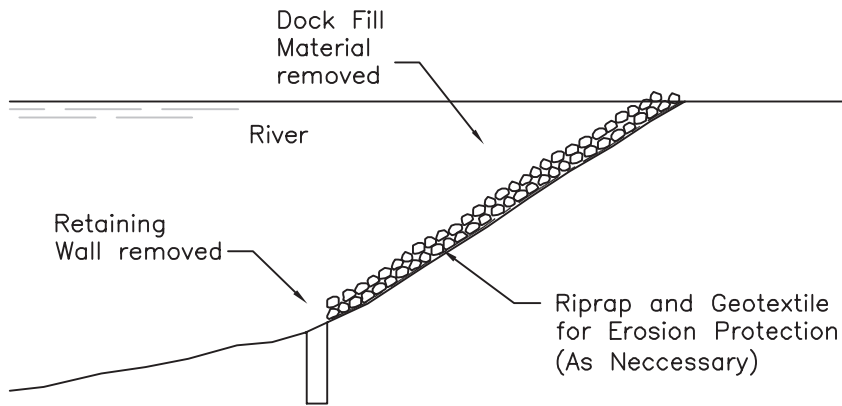
1. All dimensions in mm.
2. Voids of hazardous waste to be backfilled with granular material
3. Low permeability soil layers should be compacted to 97% of maximum dry density (ASTM D698).
4. Top low permeability soil layer, granular backfill and erosion protection layer should be graded to ensure positive surface drainage



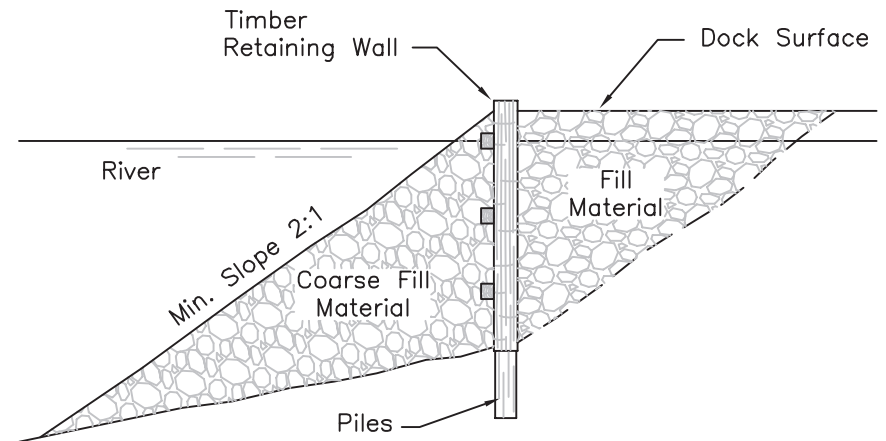




EXISTING TYPICAL CONFIGURATION



REMEDICATION METHOD A  
(Remove Dock)



REMEDICATION METHOD B  
(Support Dock)



SRK JOB NO.: 1CP001.506

FILE NAME: Figure 6.11.1.dwg



**Indian and Northern  
Affairs Canada**

**SILVER BEAR MINES  
REMEDIAL ACTION PLAN**

Terra Mine

**Potential Dock Remediation  
Methods**

DATE:

Mar. 2007

APPROVED:

SRS

FIGURE:

6.11.1