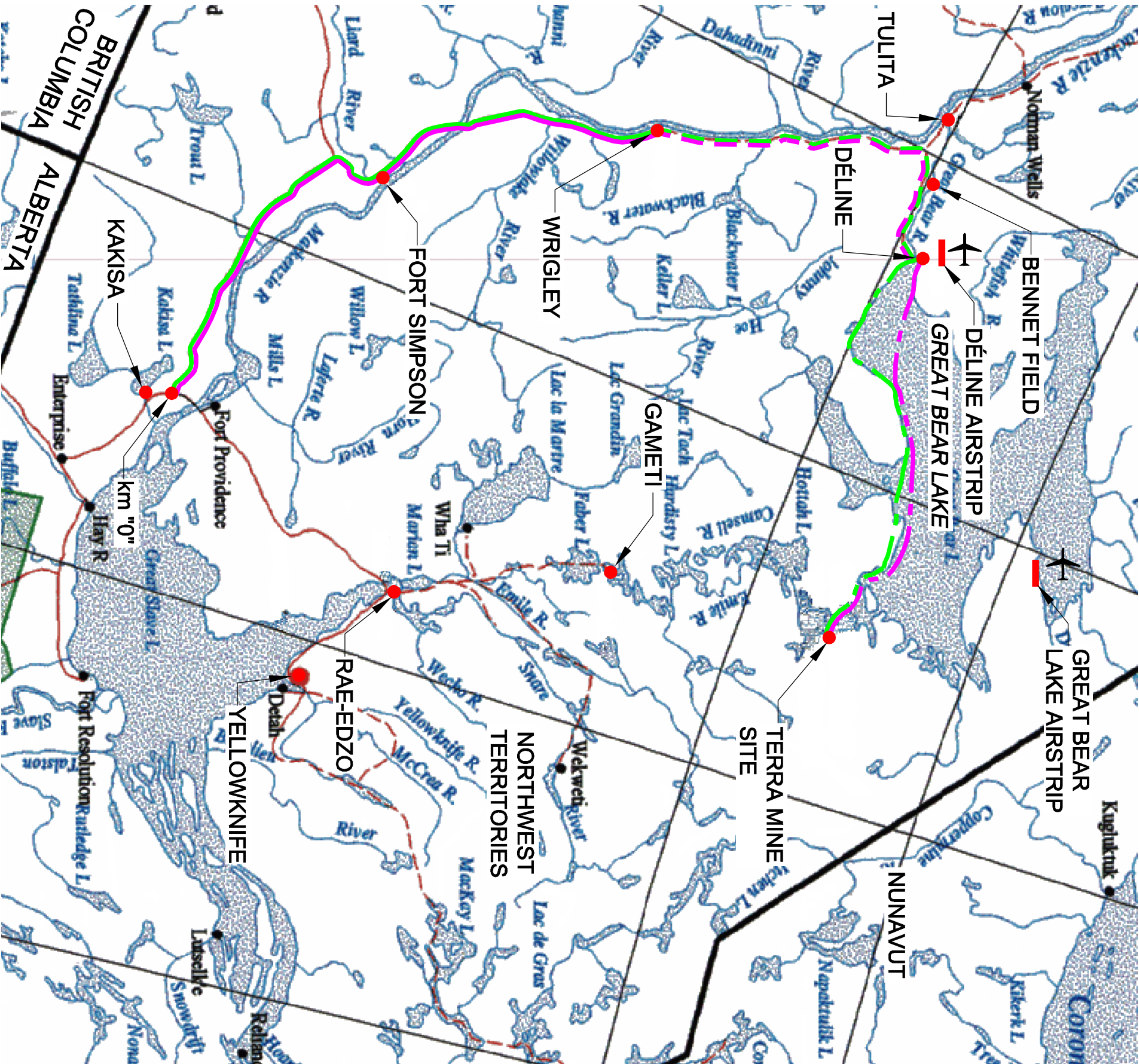
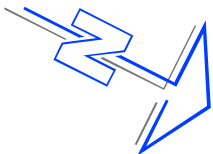




# Appendix C

## Proposed Transportation Routes



GENERAL NOTES:

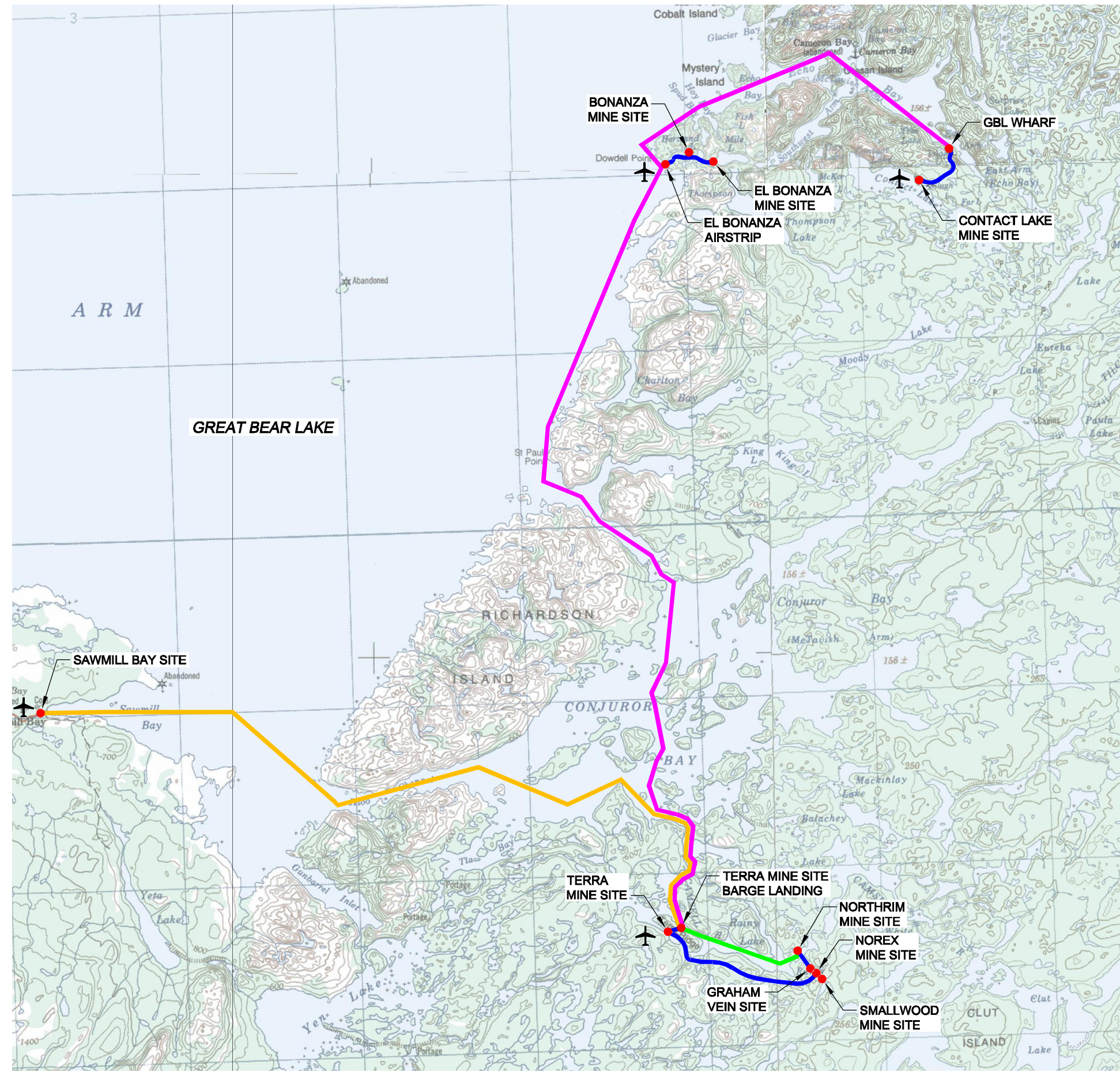
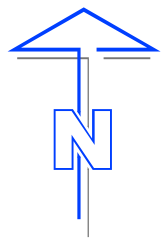
- 1. km "0" IS AT THE JUNCTION OF GNWT HWY 1 AND HWY 3, LOCATED 24 km SOUTH OF THE MACKENZIE RIVER NEAR KAKISA

LEGEND:






- OPTION 1 - km "0" TO TERRA MINE SITE VIA DÉLINE WINTER ROAD
  - km "0" TO WRIGLEY  
NWT HWY 1 - 515 km
  - WRIGLEY TO DÉLINE  
NWT WINTER ROAD - 325 km
  - DÉLINE TO TERRA MINE SITE  
CONTRACTOR WINTER ROAD - 338 km
- OPTION 2 - km "0" TO TERRA MINE SITE VIA DÉLINE - BARGE
  - km "0" TO WRIGLEY  
NWT HWY 1 - 515 km
  - WRIGLEY TO DÉLINE  
NWT WINTER ROAD - 325 km
  - DÉLINE TO TERRA MINE SITE  
CHARTERED BARGE - 280 km

SCALE: N.T.S.





**LEGEND:**

-  TERRA MINE SITE - SAWMILL BAY SITE  
TYPICAL BARGE OR ICE ROAD ROUTE VIA  
GREAT BEAR LAKE, CONJUROR BAY, AND  
CAMSELL RIVER - 48 km
-  TERRA MITE SITE - NORTHRIM MINE SITE  
TYPICAL BARGE OR ICE ROAD ROUTE VIA  
CAMSELL RIVER - 7 km
-  TERRA MINE SITE - EL BONANZA MINE SITE -  
CONTACT LAKE MINE SITE. TYPICAL BARGE OR  
ICE ROAD ROUTE VIA CAMSELL RIVER,  
CONJUROR BAY, GREAT BEAR LAKE, EL BONANZA  
AIRSTRIP BEACH HEAD, AND ECHO BAY - 76 km
-  EXISTING ROAD ALIGNMENTS BETWEEN SITES
-  AIRSTRIP OR ICE STRIP FOR SHORT TAKE-OFF  
AND LANDING AIRCRAFT

SCALE: N.T.S.