

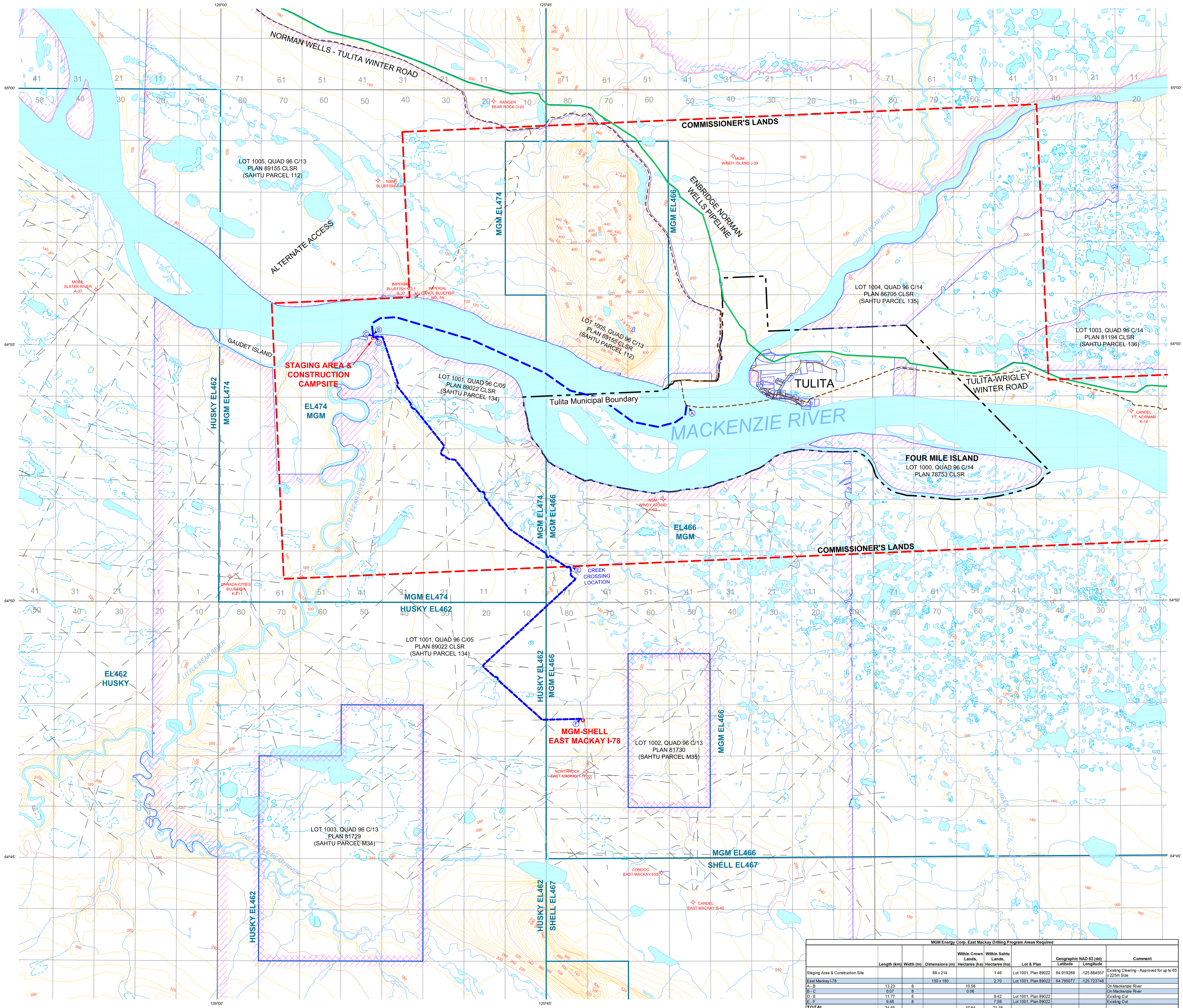
Appendix A

Maps and Cross Sections

Figures

Figure A.3.1	Map Showing East Mackay Drilling Program Winter 2012-1013
Figure A.3.2	As-Built Wellsite Plan (March 2013) of MGM-Shell East Mackay I-78
Figure A.3.3	MGM-Shell East Mackay I-78 Water Well Fence Diagram GW001 View
Figure A.3.4	MGM-Shell East Mackay I-78 Water Well Fence Diagram GW002 View
Figure A.3.5	MGM-Shell East Mackay I-78 Water Well Fence Diagram GW003 View
Figure A.3.6	MGM-Shell East Mackay I-78 Water Well Fence Diagram I-78 View
Figure A.3.7	MGM-Shell East Mackay I-78 Water Well Fence Diagram GW001 Top View
Figure A.4.1	Pre-Disturbance Soil Sample Locations
Figure A.7.1	Pre-Disturbance Surface Water Sample Locations

Figure A.3.1



MGM Energy Corp. East Mackay Drilling Program Areas Required							
	Length (km)	Width (m)	Dimensions (m)	Within Crown Lands, Hectares (ha)	Within Sahtu Lands, Hectares (ha)	Lot & Plan	Geographic NAD 83 (dd) Latitude Longitude
Staging Area & Construction Site			68 x 214		1.46	Lot 1001, Plan 89022	64.919288 -125.884557
East Mackay I-78	13.23	8	150 x 180	10.58	2.70	Lot 1001, Plan 89022	64.795077 -125.723748
A-B	0.07	8		0.06			On Mackenzie River
B-C	11.77	8			9.42	Lot 1001, Plan 89022	Existing Cut
D-E	9.48	8			7.58	Lot 1001, Plan 89022	Existing Cut
F-G							
TOTAL	34.55			10.64	21.16		

References:
Base Mapping, Cadastral data, Sahtu Land Claims, and Road Network data provided by Natural Resources Canada (NRCAN).
Sahtu Land Use Designations provided by the Sahtu Land Use Planning Board.
Oil & Gas Wells provided by the National Energy Board (NEB).
Oil & Gas Dispositions provided by Indian and Northern Affairs Canada (INAC).
NOTE: The Oil & Gas Grid uses the North American Datum of 1927 (NAD27).

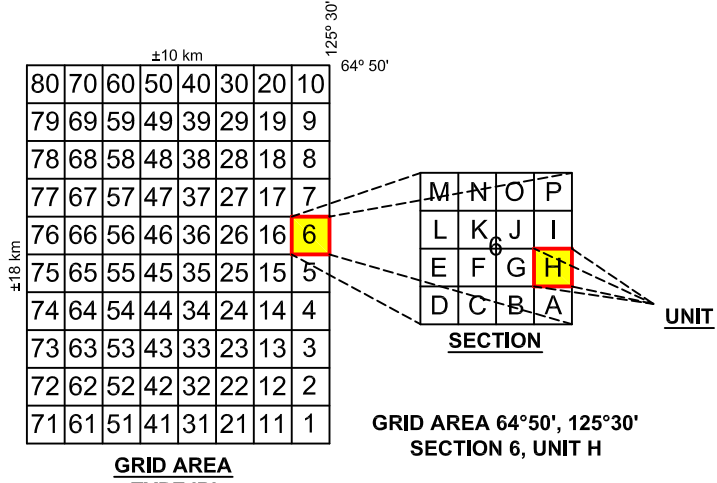
LEGEND
Perennial Waterbody
Wetlands
Perennial Watercourse
Index Contours
Intermediate Contours (20m Interval)
Roads
Winter Access Roads
Outlines
Enbridge Norman Wells Pipeline
Oil and Gas Parcels
Aboriginal Surface Rights
Aboriginal Surface & Subsurface Rights

Commissioner's Lands
Proposed 8m Access Route on Existing Seismic Line
Proposed 8m Access Route - New Cut
Alternate 8m Access Route on Existing Seismic Line
Proposed Well Locations
Ancillary Disturbances

WELL LEGEND
OIL WELL
SUSPENDED OIL
CAPPED OIL
SUSPENDED
HEAVY OIL
SERVICE
ABANDONED SERVICE
ABANDONED OIL
STANDING
DRY & ABANDONED
DRILLING
LOCATION

REVISION TABLE			
NO.	DESCRIPTION	DATE	BY
1	As-Built Plan	2013-03-26	MB
2	Update Access Road	2013-02-06	MB
3	Update Area Table and Map Title	2012-09-20	SR
4	Remove Watercourse, Add Commissioner's Lands and Update Table	2012-09-17	SR
5	Map Issued	2012-09-06	MB

OIL & GAS GRID AREA DIAGRAM



OPERATOR: MGM ENERGY CORP.

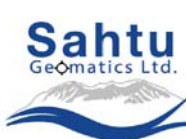


MGM ENERGY CORP.

MAP SHOWING
**EAST MACKAY
DRILLING PROGRAM
WINTER 2012-2013
AS-BUILT PLAN - MARCH 2013**

WITHIN:
SAHTU SETTLEMENT AREA, TULITA DISTRICT
NORTHWEST TERRITORIES

1000 0 1000 2000 4000 Metres
NAD27 ZONE 10 SCALE 1 : 50 000 NTS Grid 96 C/11-14, D/9 & 16, E/1 & F/3-4



CHALLENGER GEOGRAPHICS LTD.
EDMONTON, ALBERTA (780) 424-6111
FORT MCKAY, ALBERTA (780) 434-6007
WATERLOO, ONTARIO (800) 468-6000
DRAWN: MB
FILE NO.: 39002
DATE: 2012-09-20
ACAD NO.: 39002

[illegible]

Figure A.3.3 MGM-Shell East Mackay I-78 Water Well Fence Diagram GW001 View

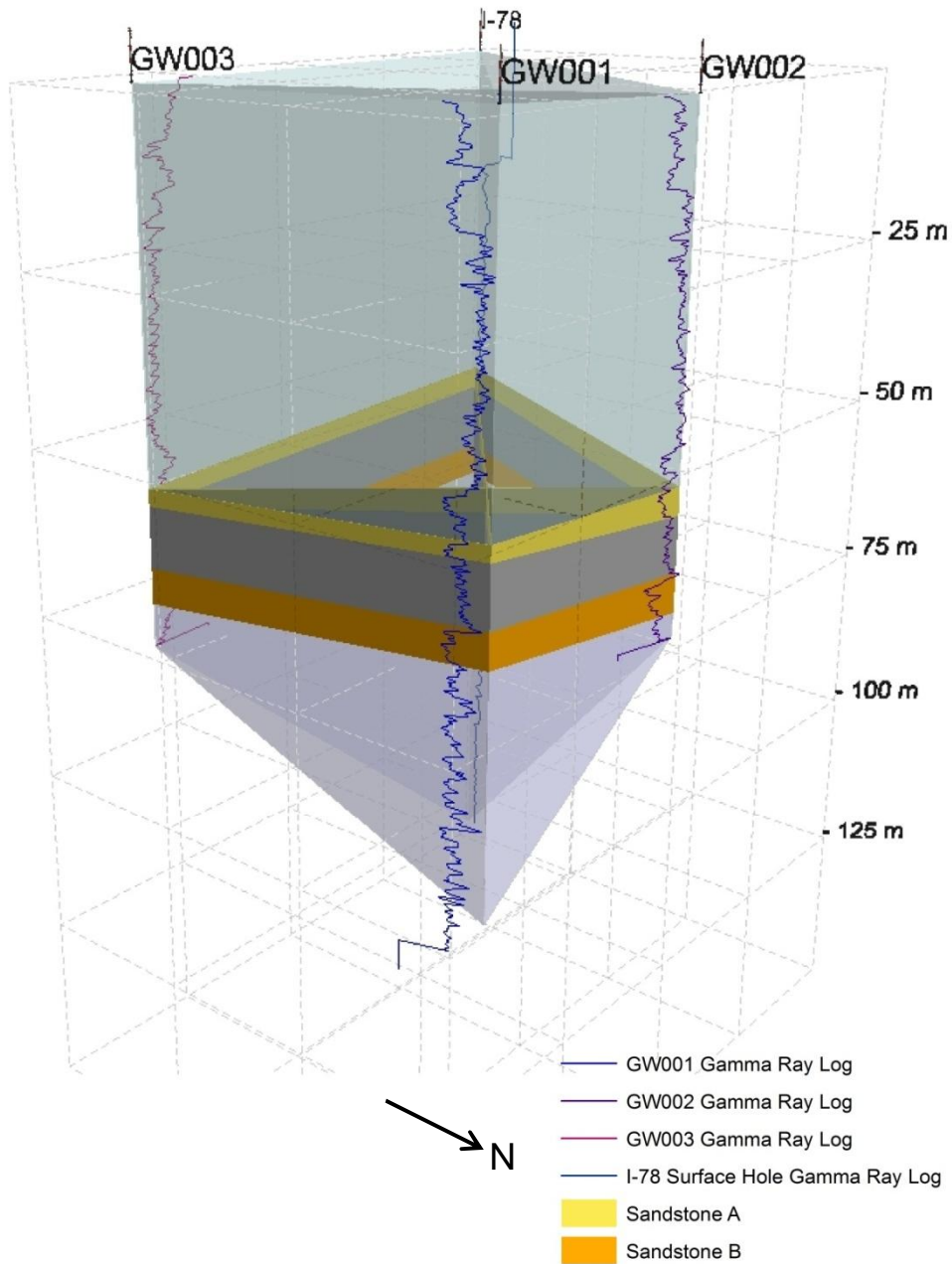


Figure A.3.4 MGM-Shell East Mackay I-78 Water Well Fence Diagram GW002 View

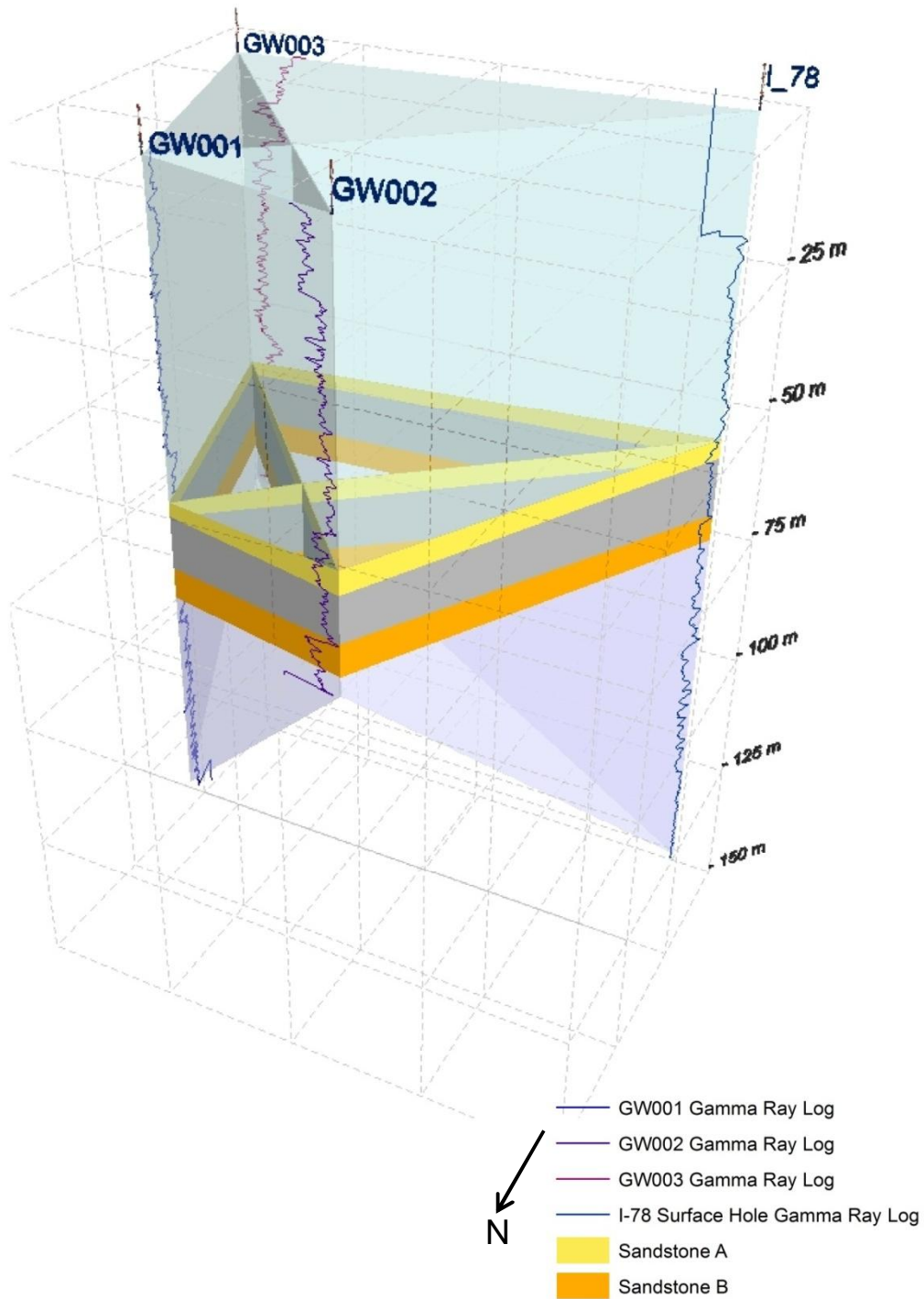


Figure A.3.5 MGM-Shell East Mackay I-78 Water Well Fence Diagram GW003 View

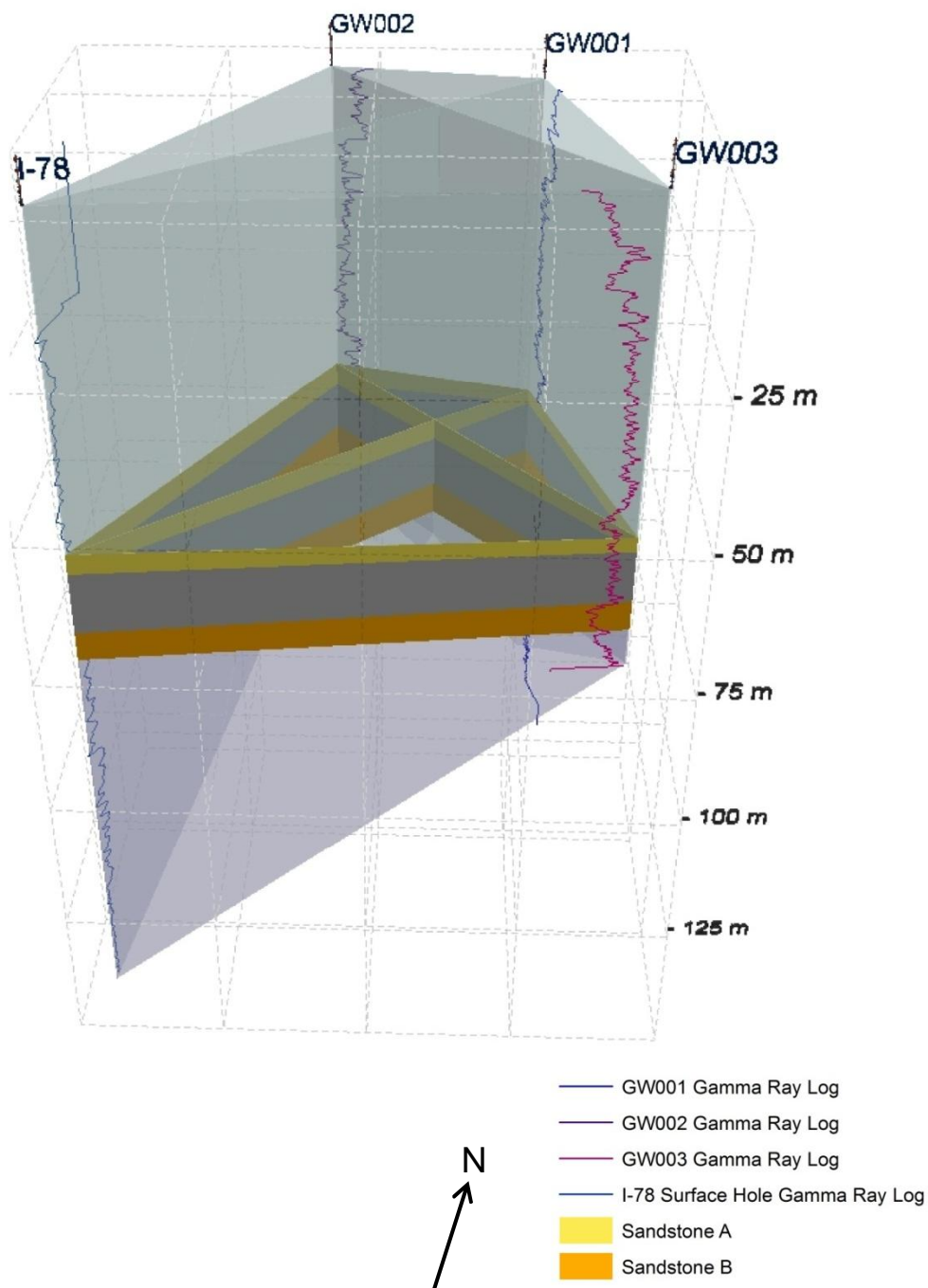


Figure A.3.6 MGM-Shell East Mackay I-78 Water Well Fence Diagram I-78 View

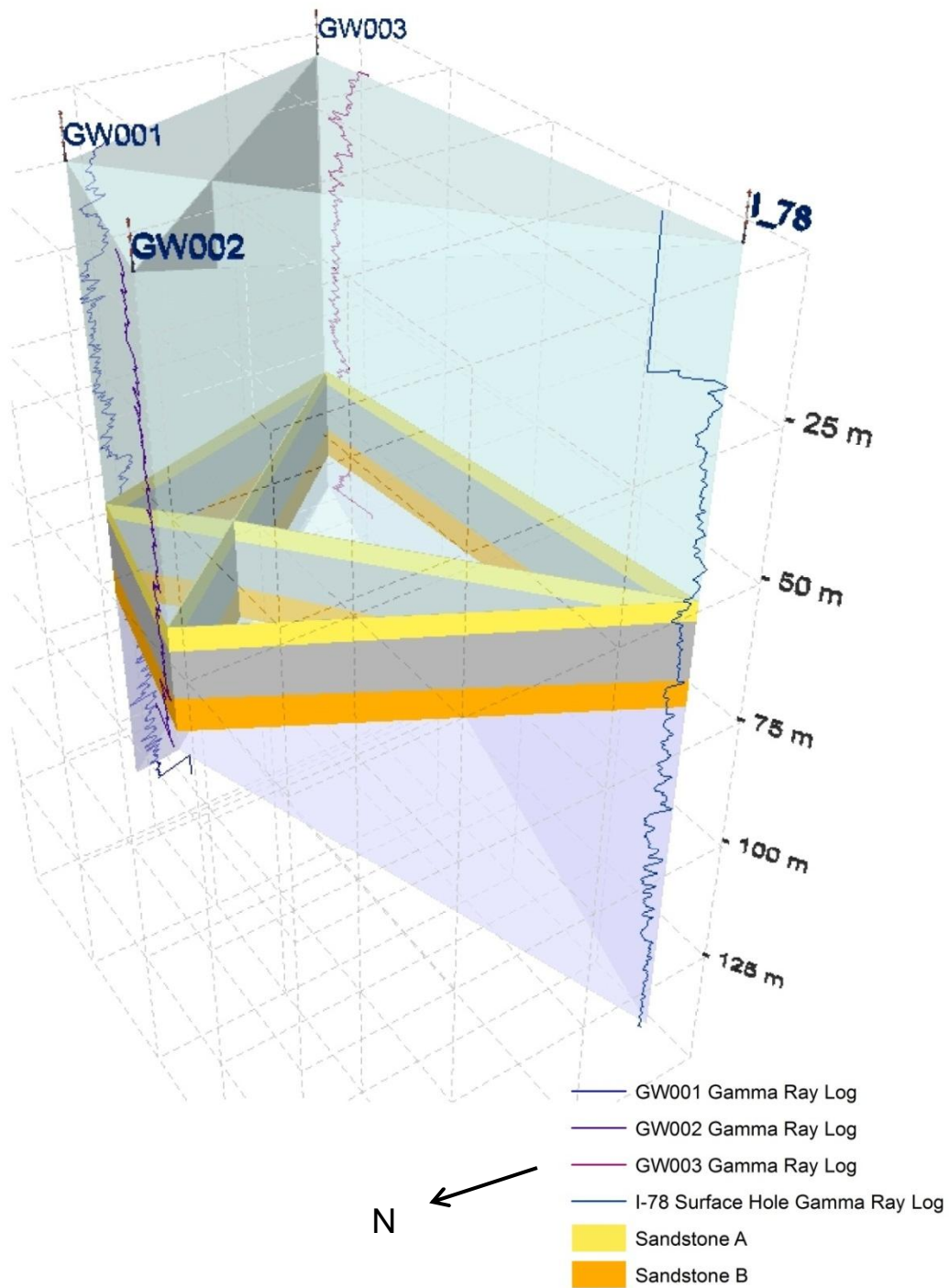
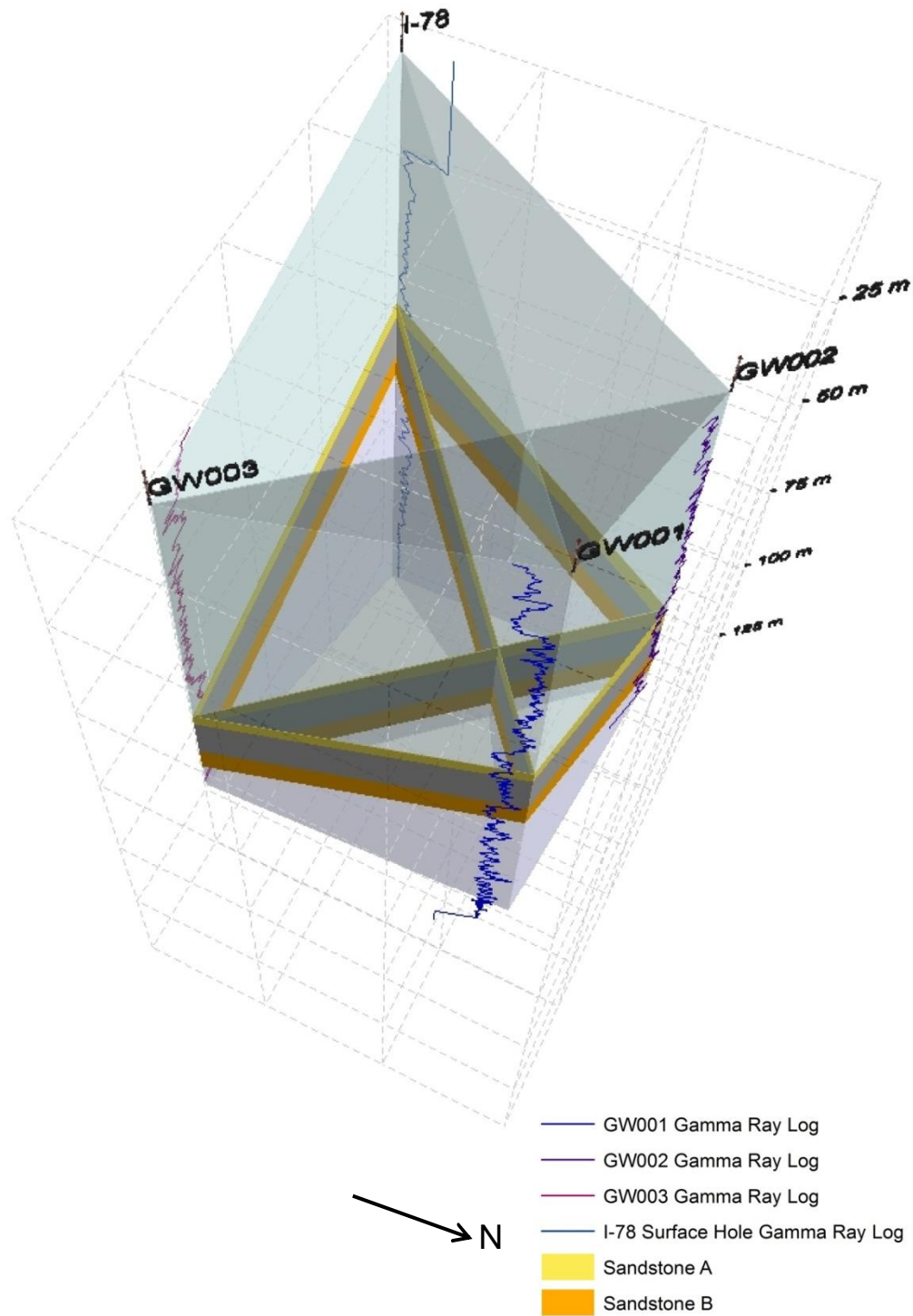


Figure A.3.7 MGM-Shell East Mackay I-78 Water Well Fence Diagram GW001 Top View



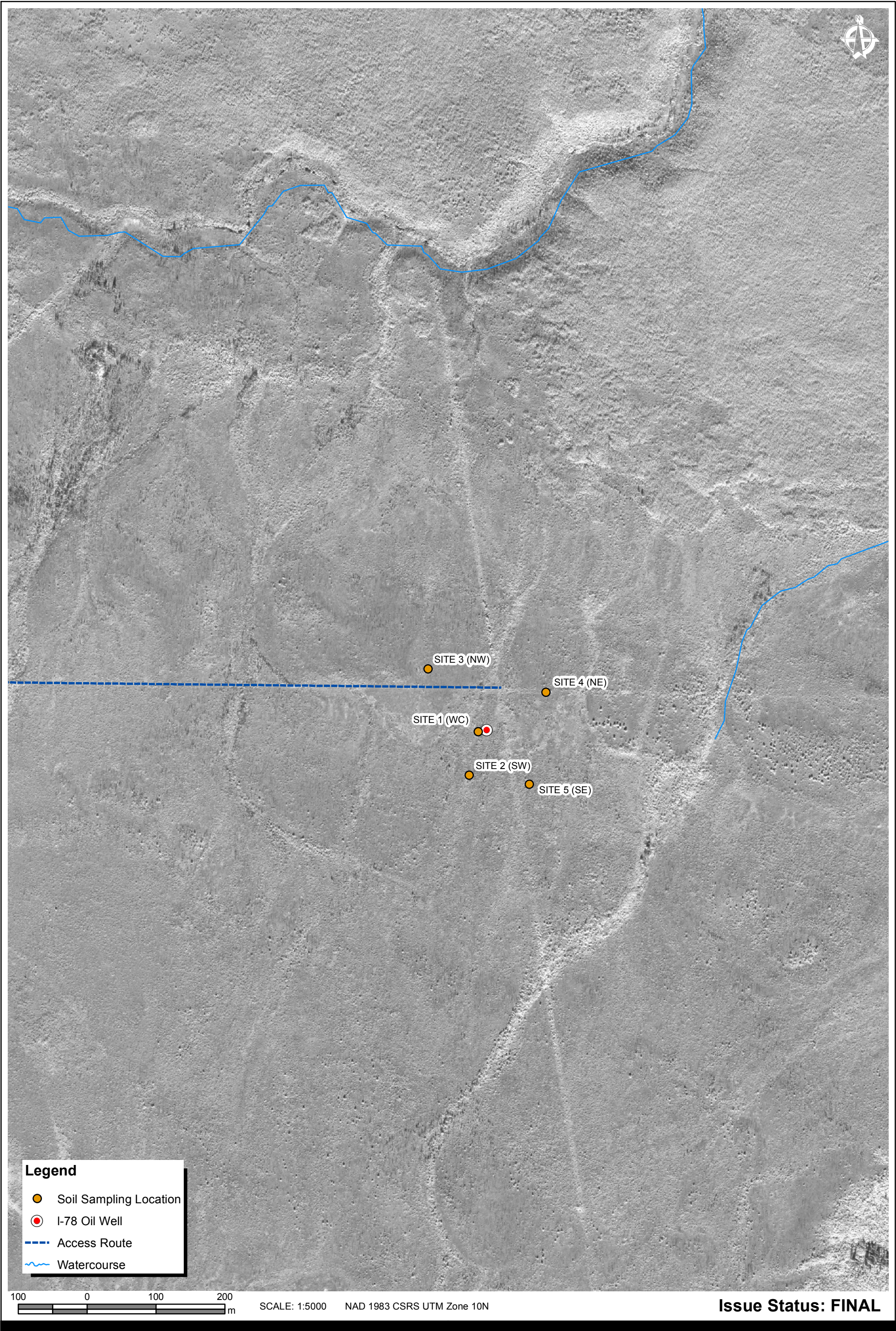


FIGURE A.4.1
MGM - Shell East Mackay
PRE-DISTURBANCE SOIL SAMPLE LOCATIONS



