



4700, 888 – 3rd Street SW, Calgary, AB T2P 5C5
Phone (403) 290-3600
Fax (403) 262-7992

October 12, 2023

To: Distribution List of Affected Parties for the East Mackay Project Area

RE: MGM Activity at I-78 in the Winter of 2023-2024

Dear Sir or Madam,

MGM Energy ("MGM") is planning to conduct activities at the I-78 East Mackay project this winter. Activities will include winter ice road construction, operation of a camp, the abandonment of the well and minor reclamation work. Activities are expected to commence in late December or early January and conclude by early to mid-March.

MGM has applied for and received a Land Use Permit (S22A-002) and Water Licence (S22L1-002) from the Sahtu Land and Water Board. MGM Energy is currently seeking the required approvals from the Office of the Regulator to conduct the abandonment activities.

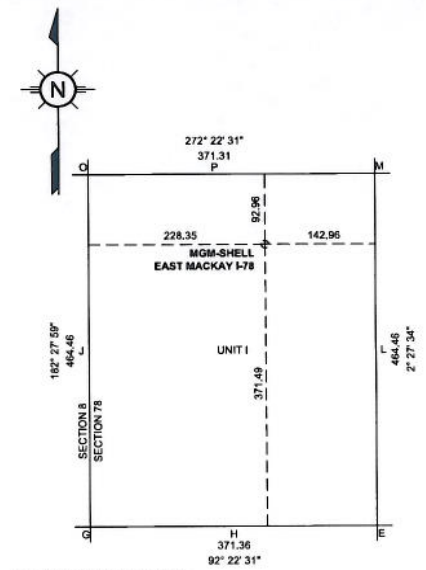
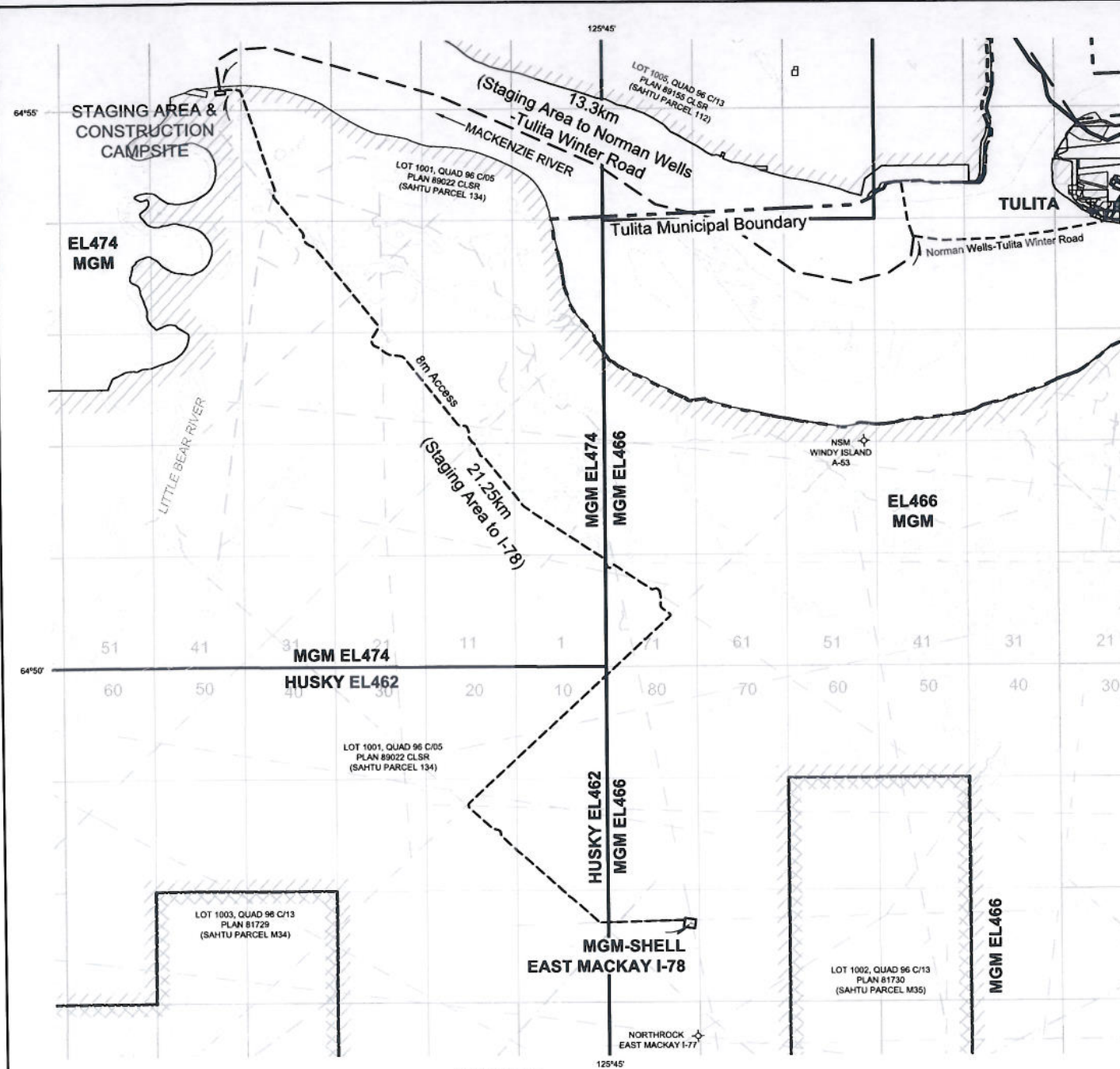
The planned activity would go ahead if all required remaining regulatory approvals are attained, the project receives internal budget approval and MGM is willing to source appropriately qualified personal and contractors to undertake the work.

Enclosed with this notification is a project map and survey. MGM intends to utilize access option 2 indicated on the map. If you have any questions regarding the above or MGM's planned activities in the East Mackay area, please contact MGM via phone at 403-206-3859 or email at terence.hughes@paramountres.com.

Respectfully,
MGM Energy

Terence Hughes
Regulatory and Community Affairs Representative

ENCL.



SURFACE UNIT DETAIL
SCALE 1 : 5000

NOTES:

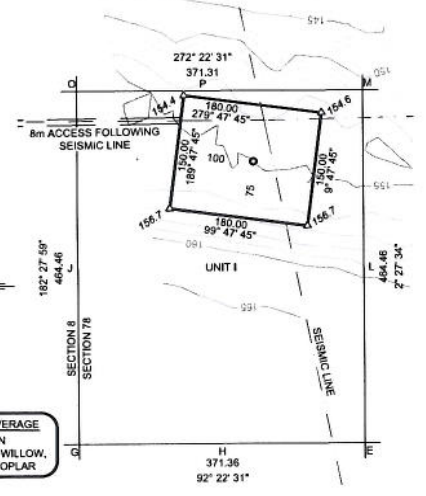
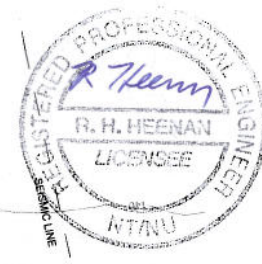
- The proposed well is at least 300m from any privately owned land or structures.
- The proposed well is at least 100m from the ordinary high water mark of a permanent water body.
- The proposed well and related areas are 100m from an archaeological/historical/traditional land use site.

NO YES

☐ ☒

☐ ☒

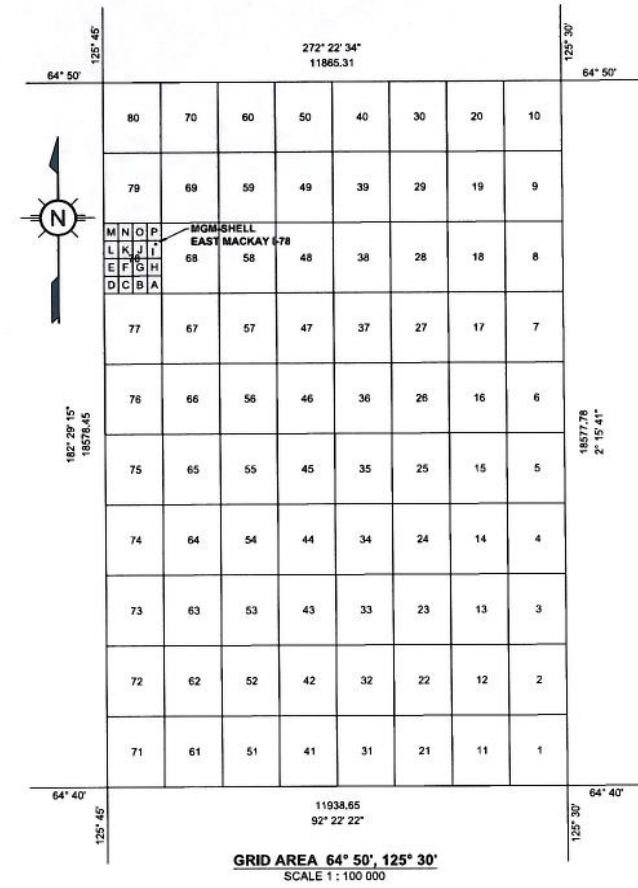
☐ ☒



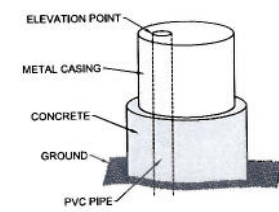
WELL SITE COVERAGE
OLD BURN
SCRUB SPRUCE, WILLOW,
TAMARACK & POPLAR

WELL SITE DETAIL
SCALE 1 : 5000

NO.	DATE	REVISION NOTES	BY
1	2012-03-26	AS-BUILT OF WELL SITE	MB
2	2012-03-26	ADDED MONITORING WELLS, PAD & FLANGE ELEVATIONS	MB
3	2012-03-26	ADDED MONITORING WELLS, PAD & FLANGE ELEVATIONS	MB
4	2012-03-26	ADDED MONITORING WELLS, PAD & FLANGE ELEVATIONS	MB
5	2012-03-26	ADDED MONITORING WELLS, PAD & FLANGE ELEVATIONS	MB
6	2012-03-26	ADDED MONITORING WELLS, PAD & FLANGE ELEVATIONS	MB



GRID AREA 64° 50', 125° 30'
SCALE 1 : 100 000



GROUND WATER WELL DIAGRAM
NOT TO SCALE

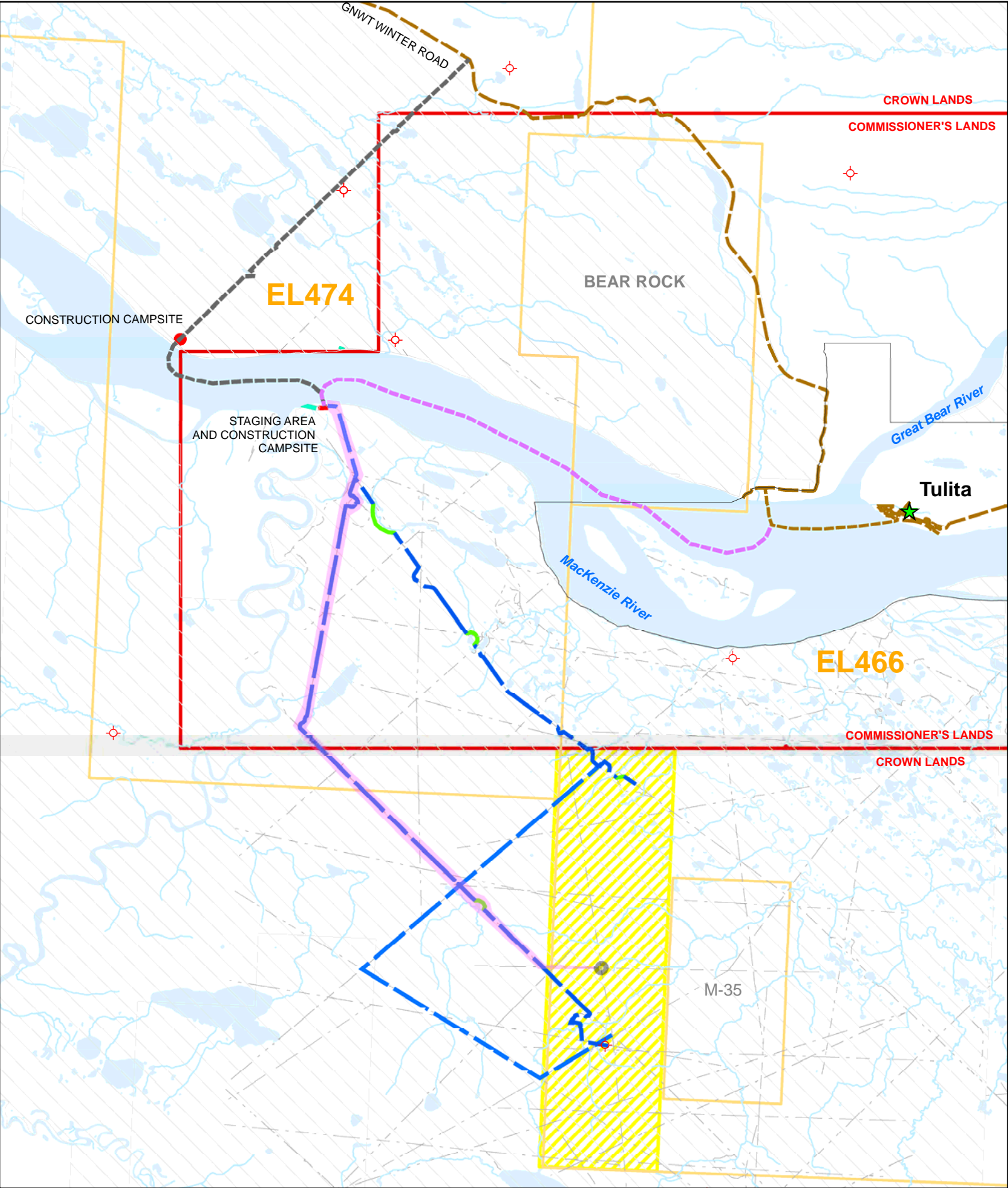


ACCESS MAP
SCALE 1 : 50 000



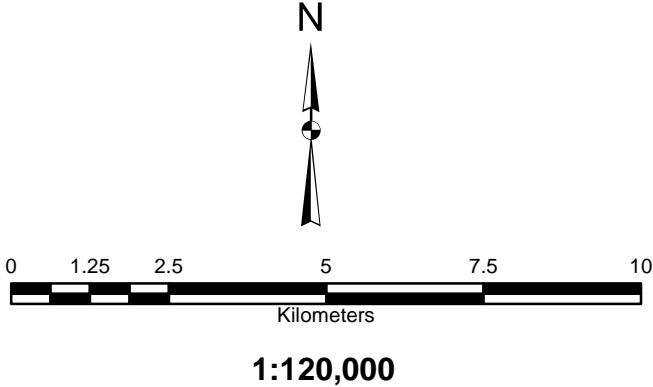
MGM ENERGY CORP.
AS-BUILT WELLSITE PLAN (MARCH 2013)
OF
MGM-SHELL EAST MACKAY I-78
IN UNIT I, SECTION 78
GRID AREA 64° 50', 125° 30'
EXPLORATION LICENCE 466
SAHTU SETTLEMENT AREA, TULITA DISTRICT
NORTHWEST TERRITORIES
2012
RON ROBINSON C.L.S.

AREAS WELL SITE = 2.70 ha. ELEVATIONS ORIGINAL GROUND AT WELL LOCATION = 155.1m PAD ELEVATION = 155.92m AT TOP OF FLANGE = 155.9m	UTM CO-ORDINATES AT WELL CENTRE NAD 27 (UTM Zone 10) N. 7188196.19 E. 370694.01 NAD 83 (UTM Zone 10) N. 7188403.92 E. 370615.72 NAD 27 (UTM Zone 9) N. 7189449.02 E. 655726.91 NAD 83 (UTM Zone 9) N. 7189648.73 E. 655635.83
SURVEY DATES AUGUST 18-19, 2012 & FEBRUARY 2-3, 2013	GEOGRAPHIC CO-ORDINATES AT WELL CENTRE NAD 27 LAT. : 64°47'42.1" N. LONG. : 125°43'18.3" W. NAD 83 LAT. : 64°47'42.4" N. LONG. : 125°43'24.7" W.
LEGEND Lands to be dealt with outlined thus Proposed MGM Access shown thus Aboriginal Surface Rights shown thus Aboriginal Sub-Surface Rights shown thus 0.25m spikes placed shown thus Ground water monitoring wells are shown thus NAD 27 UTM coordinates are converted from surveyed NAD 83 values and are derived from NRCAN Precise Point Positioning (PPP) website. Elevations are orthometric and were derived using the HTV2.0 geoid model. Bearings are UTM grid (NAD 27) Zone 10 and are referred through C.M. 123° W. Distances are in metres and decimals thereof. Contour interval is 1.0m Position of foreign wells is based on NEB records.	
OPERATOR: MGM ENERGY CORP. <p>WITNESS</p> <p>RON ROBINSON CANADA LANDS SURVEYOR</p>	
SCALE: AS SHOWN	DATE: 2012-09-17 DRAWN/CHECKED: MB/ICRR CAD NO.: 39002 ACAD NO.: 39002_I-78



Legend

- Existing Wells
- Access Option 2
- Access Option 1
- Access New Cut
- Alternative Site Access Options
- GNWT Winter Road
- Cutlines
- watercourse
- Chosen Access Route from the Staging Area
- Selected Drillsite / Campsite Location
- Commissioner's Lease
- Area of Interest
- Staging Area/Construction Campsite
- Commissioner's Lands Boundary
- Tulita Municipal
- MGM EL's
- Aboriginal Surface
- Water Body



DOT WINTER ROAD DISTANCES		
FROM	TO	DISTANCE(km)
NORMAN WELLS	Access Option 1	80
TULITA	Access Option 1	3
NORMAN WELLS	Access Option 2	60
TULITA	Access Option 2	23
TULITA	WRIGLEY	248



MGM ENERGY CORP.
MGM EAST MACKAY
PROJECT AREA MAP

Projection: NAD83 UTM Z10
Date: July 17, 2012