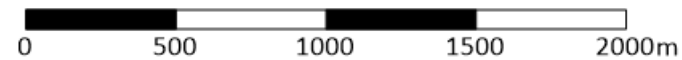


Appendix 1

Figures



Scale 1:20,000

PROJECT NO.	DRAWING DATE	DRAWN BY	REVIEWED BY
22NT0332	Nov 2022	BD	AV

TITLE:
Overall Site Plan

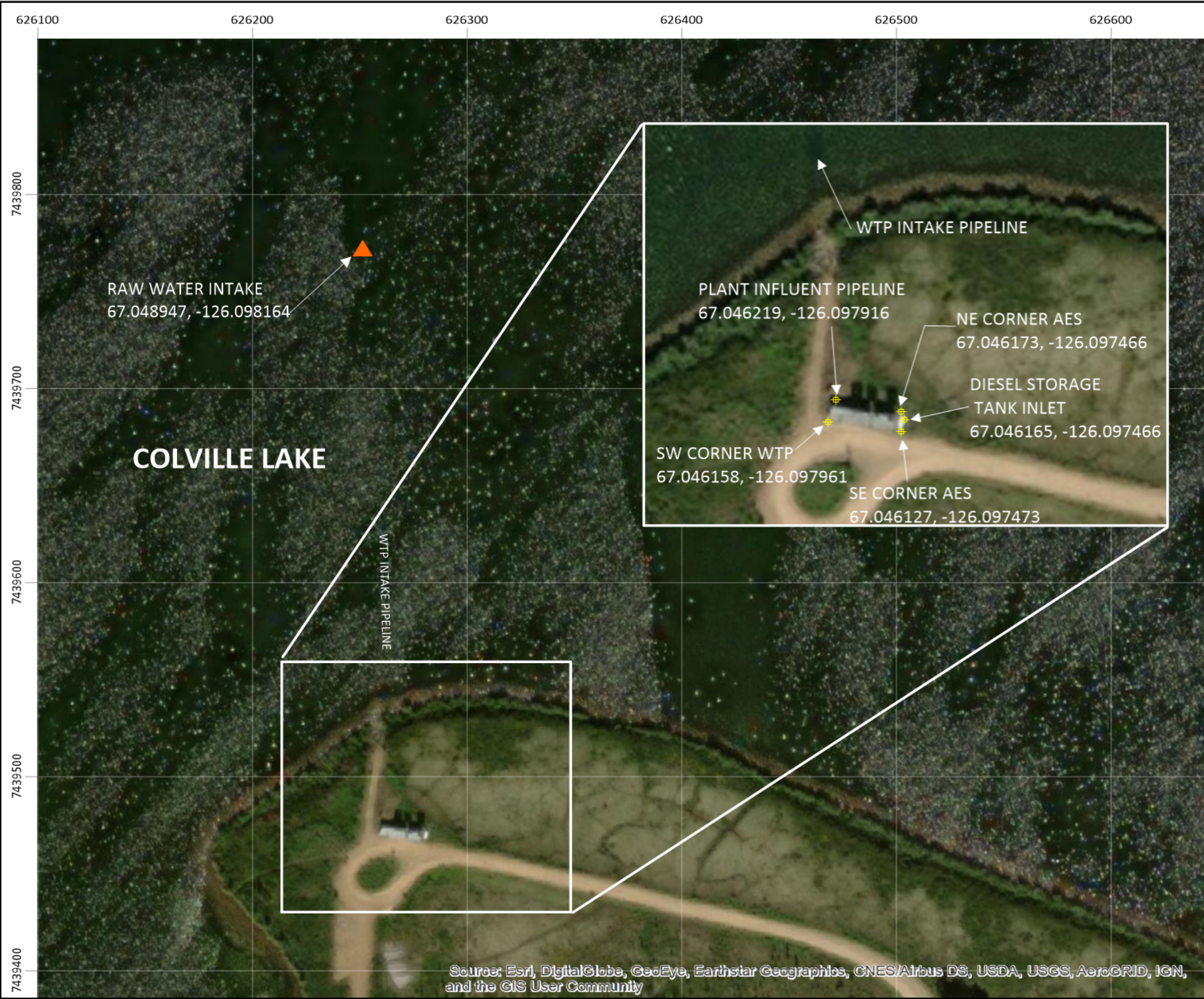
LOCATION:
Colville Lake, NT

DRAWING REFERENCE(S):
1. Aerial Photo obtained November 10, 2022 from ArcGIS
2. Coordinates: NAD 1983 UTM Zone 096M



FIGURE:

1



LEGEND:

Waypoint

Pump Intake

WTP Water Treatment Plant

AES Alternate Energy System

NE Northeast

SW Southwest

SE Southeast

67.046173, -126.097466 Latitude, Longitude



0 25 50 75 100m

Scale 1:2500

PROJECT NO.	DRAWING DATE	DRAWN BY	REVIEWED BY
22NT0332	Apr 2023	BD	AV

TITLE:
Water Treatment Plant

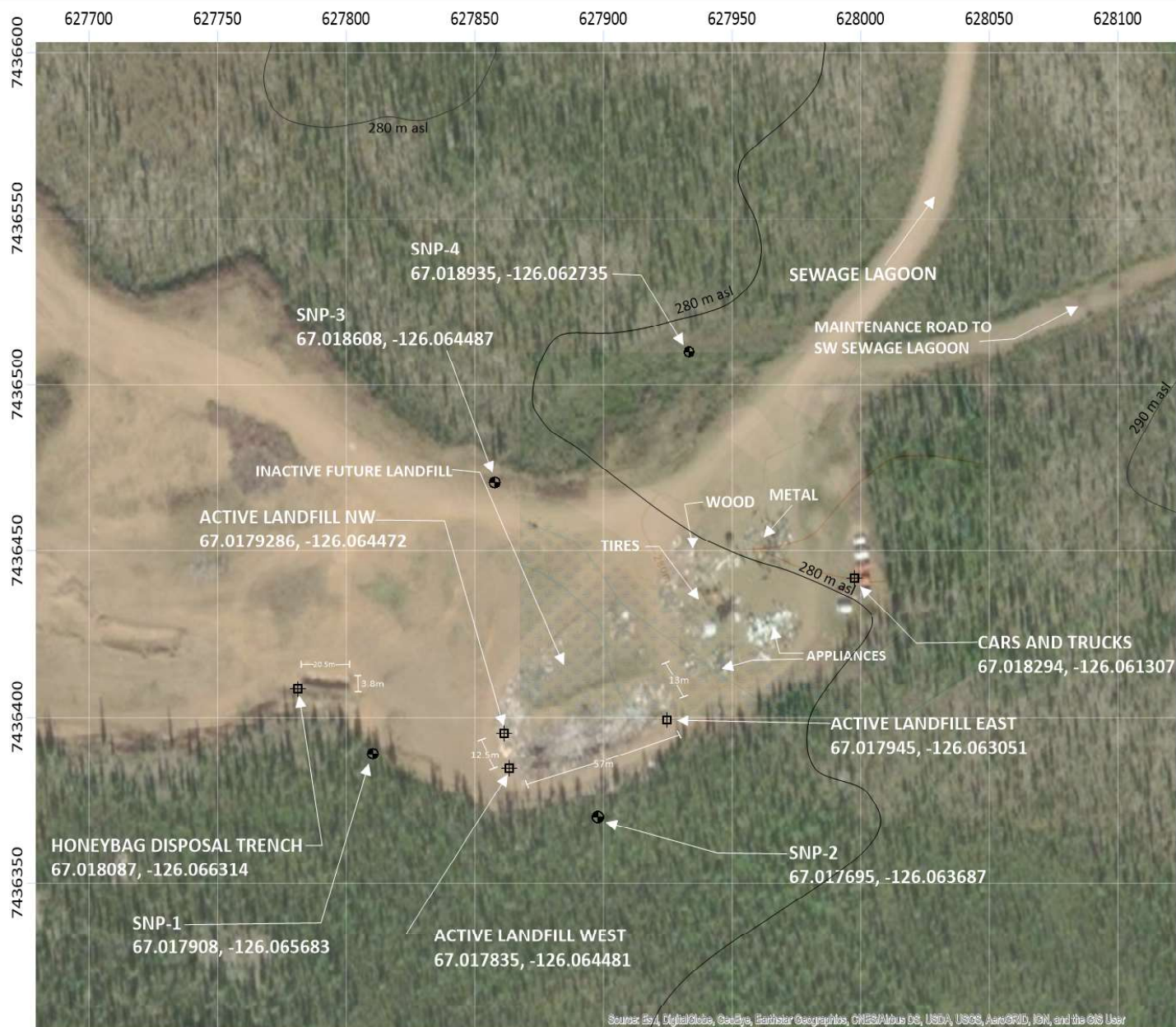
LOCATION:
Colville Lake, NT

DRAWING REFERENCE(S):
1. Aerial Photo obtained April 4, 2023 from ArcGIS
2. Coordinates: NAD 1983 UTM Zone 096M



FIGURE:

2



LEGEND:

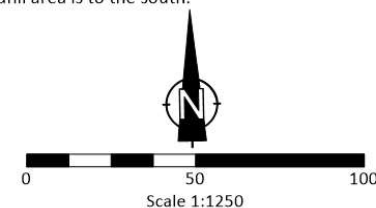
- Waypoint
 - Surveillance Network Program (SNP) Well
 - Topographic Lines
- m asl metres above sea level
 NW Northwest
 SW Southwest

67.018294; -126.061307
 (Latitude;Longitude)

Material in inactive Landfill is blown in by wind and is regularly moved to the Active Landfill.

Topography is regional and not reflective of engineered surfaces.

Based on local knowledge, surface run off from the landfill area is to the south.



PROJECT NO.	DRAWING DATE	DRAWN BY	REVIEWED BY
22NT0332	Nov 2022	BD	AV

TITLE:

Solid Waste Disposal Facility

LOCATION:

Colville Lake, NT

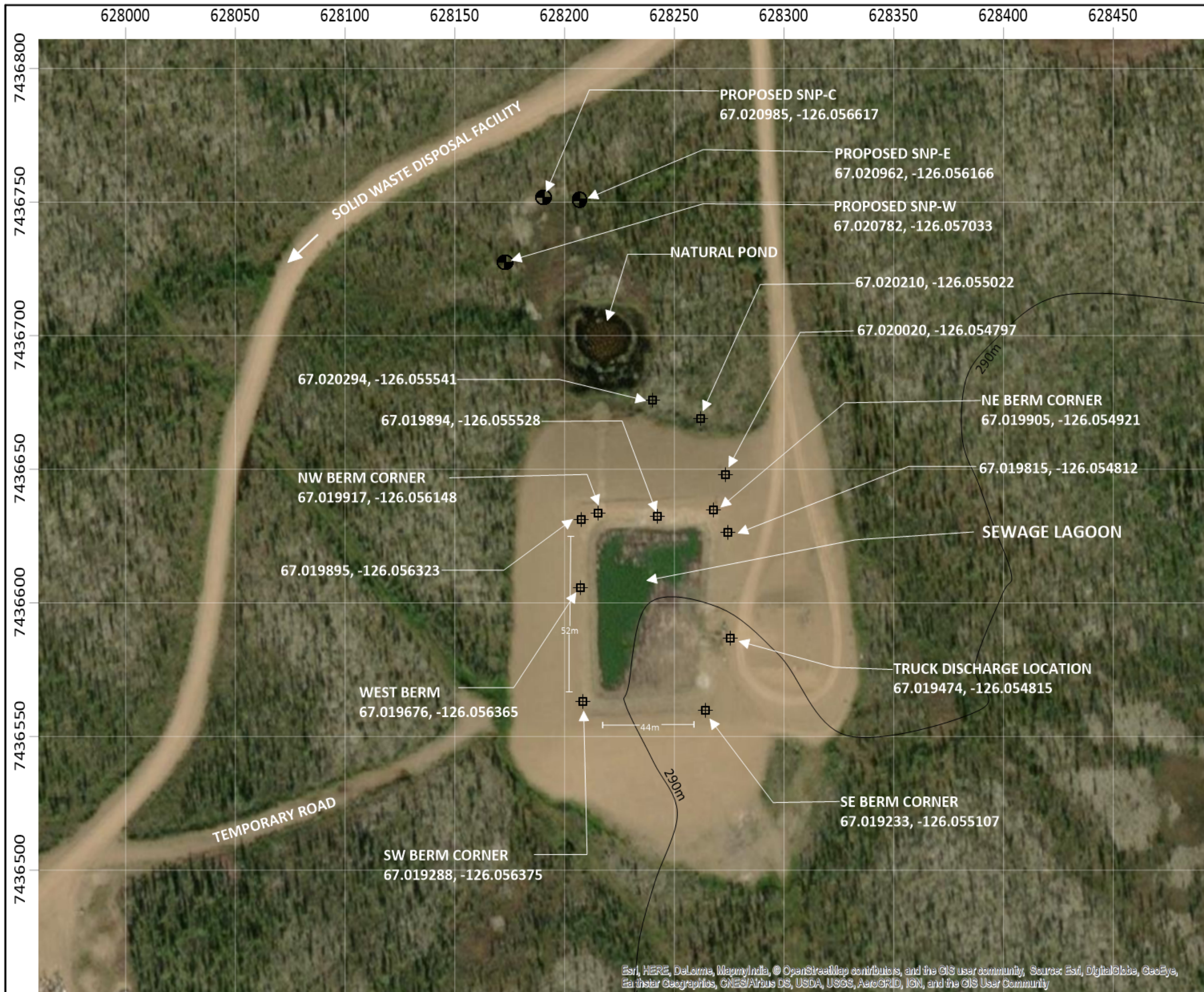
DRAWING REFERENCE(S):

1. Aerial Photo obtained November 10, 2022 from ArcGIS
2. Coordinates: NAD 1983 UTM Zone 06GM
3. Topographic data obtained from The Atlas of Canada - Toporama (m asl = metres above sea level)



FIGURE:

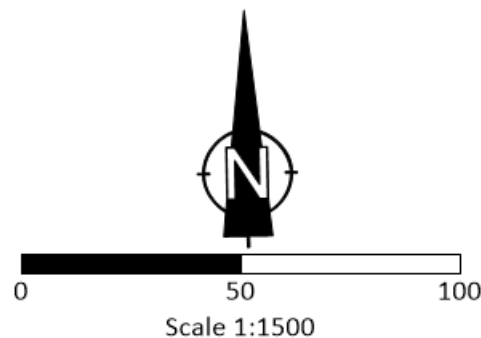
3



LEGEND:

- Surveillance Network Program (SNP) Well
- Waypoint
- Topographical Lines
- C Centre
- E East
- W West
- NE Northeast
- NW Northwest
- SE Southeast
- SW Southwest

67.019815, -126.054812 Latitude, Longitude



PROJECT NO.	DRAWING DATE	DRAWN BY	REVIEWED BY
22NT0332	Nov 2022	BD	AV

TITLE:
Sewage Lagoon

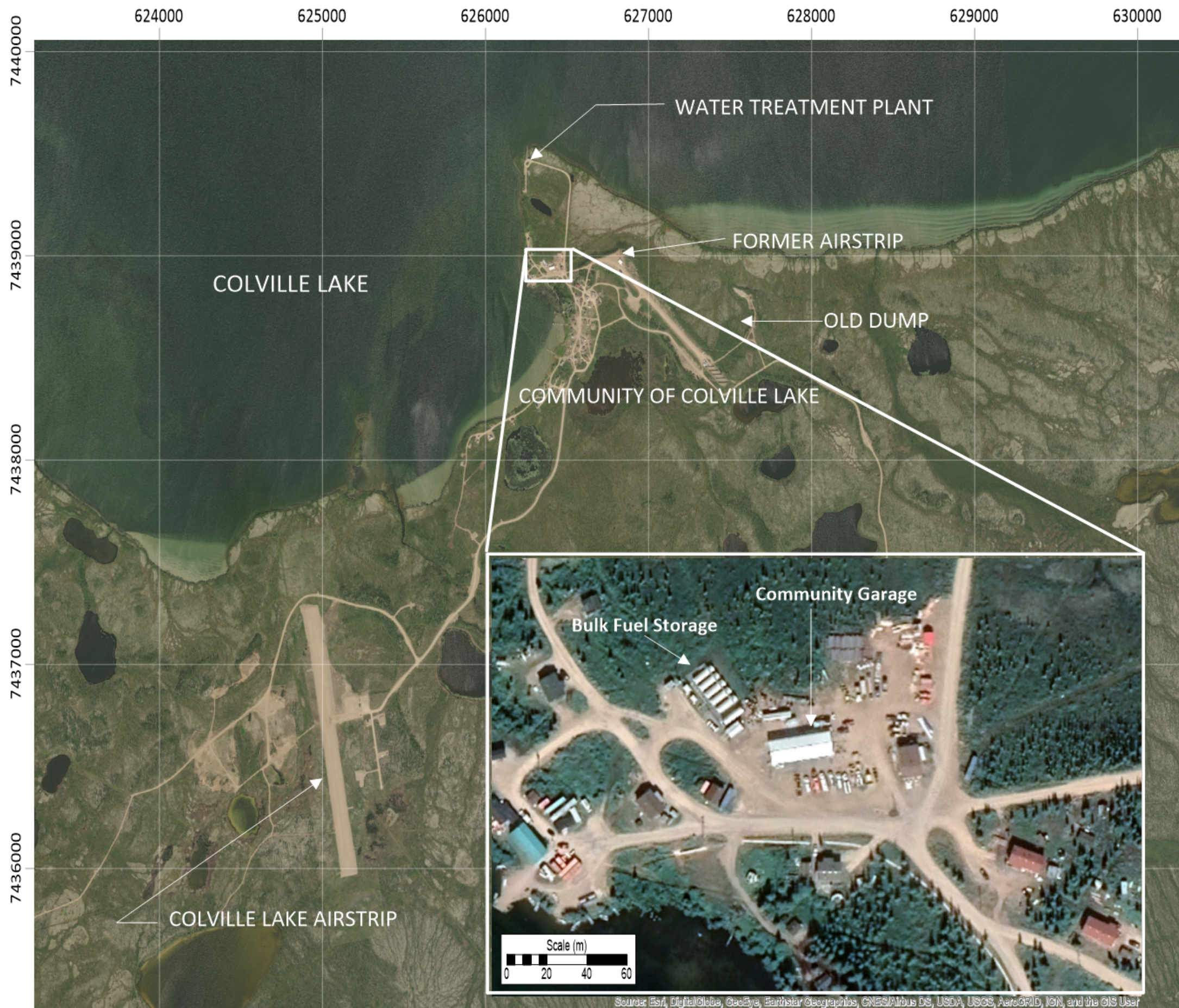
LOCATION:
Colville Lake, NT

DRAWING REFERENCE(S):
1. Aerial Photo obtained November 15, 2022 from ArcGIS
2. Coordinates: NAD 1983 UTM Zone 096M



FIGURE:

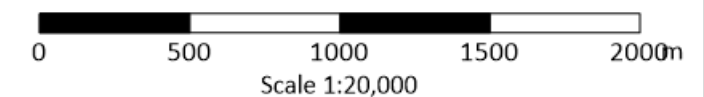
4



LEGEND:

There are no municipal boundaries identified due to "Designated Authority" status (per C. Hewitt, Municipal and Community Affairs)

Insert depicts the area at the north edge of the community



PROJECT NO.	DRAWING DATE	DRAWN BY	REVIEWED BY
22NT0332	Dec 2022	LM	AV

TITLE:

**Spill Contingency Plan
Community Detail**

LOCATION:

Colville Lake, NT

DRAWING REFERENCE(S):

1. Aerial Photo obtained November 10, 2022 from ArcGIS
2. Coordinates: NAD 1983 UTM Zone 096M
3. Inset photo obtained December 2022 from Google Earth Pro



FIGURE:

5