



Waste Management Plan

Version 1.0 (v1.0)

Effective date: June 2025

**Let's Plant Trees North Ltd. – Tłıchǰ Government Reforestation
Project: Preserving Our Land Preparing for the Future**

Tłıchǰ Land Reforestation Project

Prepared by:

Spectrum Resource Group
1960 Robertson Road
Prince George, BC
V2N 1X6

April 2025

Table of Contents

Revision History	3
Glossary and Abbreviations	4
Introduction & Project Details	5
Effective Date	5
Purpose and Scope	6
Environmental Policy	6
Reforestation Project Location Description	6
Planting Camp Location Description	7
Identification of Waste Types	11
Waste Management Approach	11
Waste Disposal Sites	12
Compliance and Monitoring	13
Emergency Response	13
Site Decommissioning and Restoration	13
Figure 1: <i>TGRP Overview map</i>	8
Figure 2: <i>TGRP Camp Location Overview Map</i>	9
Figure 3: <i>TGRP Camp Layout Map</i>	10
Table 1 Potential hazardous and other waste materials proposed to be generated	11



Revision History

Revision Date	Section(s)	Revision
April 11, 2025	All Sections	Version 1.0 - Initial Submission Review

Glossary and Abbreviations

Acronym - Abbreviation	Definition
GNWT	Government of Northwest Territories
ha	Hectares
INAC	Indigenous and Northern Affairs Canada
L	Litre
LPTN	Let's Plant Trees North Ltd.
LUP	Land Use Permit
MVLWB	Mackenzie Valley Land and Water Boards
MVRMA	<i>Mackenzie Valley Resource Management Act</i>
NWT or NT	Northwest Territories
NWTWA	<i>Northwest Territories Water Act</i>
Plan or plan	Waste Management Plan
SRG	Wright Canada Holdings Ltd. operating as Spectrum Resource Group
TBD	To Be Determined
TG	Tłıchq Government
WLWB	Wek'èezhii Land & Water Board
WMP	Waste Management Plan
WRRB	Wek'èezhii Renewable Resources Board
WSCC	Workers' Safety and Compensation Commission



Let's Plant Trees North Ltd.

Waste Management Plan for Temporary Planting Camp and Field Operations

April 2025

Introduction and Project Details

Let's Plant Trees North Ltd. (LPTN) has developed this Waste Management Plan (WMP) to cover its activities during the Tłıchǫ Government Reforestation Project: Preserving Our Land Preparing for the Future.

The plan is designed so that a coordinated response to spills will occur, and any spill will be dealt with in a timely and efficient manner. All personnel handling fuel or chemicals shall be made familiar with the plan and the plan will be part of the introduction to new personnel to the reforestation project.

This WMP was prepared by Spectrum Resource Group (SRG) and approved by LPTN. Additional information or copies are available from SRG at (250) 564-0383.

Company Name and Mailing address:

Let's Plant Trees North Ltd.

Mailing address: 436 Lands' End Road, North Saanich, BC, V8L 5L9

Tel: 778.679.6926

Website: www.letsplanttrees.ca

email: tonken@icrossroads.com

Attention: David Tonken

Effective date of Waste Management plan: June 2025

Last revisions to Waste Management Plan: April 2025

Distribution List

The plan and any recent revisions have been distributed to:

David Tonken, President and CEO, LPTN.

Crawford Young RPF, Silverado Silviculture Ltd.

Chris Babkirk, Senior Manager, Tłıchǫ Investment Corporation.

Dominic Doctor, Owner, Dehk'e Enterprise

Joshua Quaitte, Reforestation Division Manager, SRG.

Tom Cooper, Project Planting Camp Supervisor, SRG,

Wek' èezhii Land and Water Board (WLWB)

Tłıchǫ Government (TG)

TBD, Project personnel, SRG



Purpose and Scope

This WMP is developed in accordance with the *Mackenzie Valley Resource Management Act* (MVRMA), the Wek' èezhii Land and Water Board regulations, and relevant Northwest Territories (NWT or NT) and WLWB regulations. The plan complies *Northwest Territories Water Act* (NWTWA) and the Industrial Camp Regulations, particularly the Camp Set Up and Management Code of Practice by the Workers' Safety and Compensation Commission (WSCC).

The WMP provides a structured approach to managing, storing, transporting, and disposing of waste at the temporary tree planting camp near Russell Lake, NT. It outlines the mechanisms to monitor and measure performance and to evaluate the effectiveness of LPTN and SRG tree planting project's waste management activities and adherence to the regulations governing waste management in the Wek' èezhii. The objective is to minimize environmental impact and ensure compliance with regulatory frameworks.

Company & Site Information

- Company Name(s): Let's Plant Trees North Ltd. and Spectrum Resource Group
- Project Camp Location: Russell Lake, Tłıchǫ Agreement Lands, NWT.
- Number of Workers on the Project: ~90 for 45 days
- Primary Activities: tree planting, camp operations, fuel handling

Company Environmental Policy

LPTN and SRG are committed to the protection of the environment through incorporating the best possible practices throughout our operations.

Objectives

- To conduct our business in compliance with applicable environmental laws and regulations.
- To provide customers with systematic services in a manner that protects the environment by
- assessing the individual sensitivity of the worksite and the impact our operation may have (i.e.,
- slope, runoff, drift, water bodies, soil porosity and wildlife).
- To continually improve our environmental management systems and corporate performance.
- To promote sustainable management of forest lands while protecting water quality, fish
- and wildlife habitat, soil productivity, and cultural, historical and aesthetic values.
- To lead by example in our practice of environmental stewardship.
- To reduce pollution and conserve natural resources through recycling and waste reduction.

The WMP is to be distributed to LPTN and SRG's site managers and contractors. The WMP will apply to all project locations. Training will be provided during orientation to ensure all personnel understand the WMP procedures to follow during the operational phases of the project. The WMP is to remain posted in the camp office and will be posted at any future camps. The WMP will be made known to all employees and contractors.

Reforestation Project Location Description

The LPTN tree planting work on the Tłıchq Government Reforestation Project (TGRP) will be split between the two geographically distinct areas of Behchokq and west of James Lake with the gross area of the project at approximately 1400 hectares altogether (refer to Figure 1 reforestation project overview map).

West James Lake planting area will be accessed by helicopter from the camp near Behchokq. The camp and planting near Behchokq will be accessed by existing road and highway with some helicopter assistance.

Planting Camp Location Description

The proposed LPTN camp location is at the sandpit near Russell Lake lying approximately 300 meters south of Russell Lake and 300 meters west of the Spiritual Gathering Place (62°51'12"N, 115°58'42"W).

The camp will accommodate 90 personnel from across Canada, as well as community members, offering lodging and meals. The Russell Lake sand pit has been identified as an ideal location for this project. The pit provides a large, open space suitable for tents and trailers, easy access to planting sites, and proximity to water for camp supplies and worker leisure. Both LPTN and SRG are committed to respecting the area throughout the camp's duration, ensuring that no trace of the camp will remain after its removal. Camp closure will be completed to the satisfaction of the municipal government as confirmed by an email from them agreeing with the provided site inspection.

All planting activities will be carried out with the highest regard for the environment with safety being prioritized for all workers and stakeholders. LPTN will report to the Tłıchq Government on the environmental state of the site. An environmental monitoring system will be established, and an environmental monitor will be assigned to conduct inspections/audits of the planting site on a regular basis.

Activities related to the set-up, operation, and take down of the tree planting camp will not exceed the level of disturbance that has already historically occurred. The footprint for the camp is ~4.33 ha. All camp infrastructure will be located within the Russell Lake sand pit. Figure 2 TGRP camp location overview provides the general location of the project camp and Figure 3 TGRP camp layout map provides a detailed view of the campsite including the location of fuel storage areas, office, kitchen, etc., and surrounding water bodies.

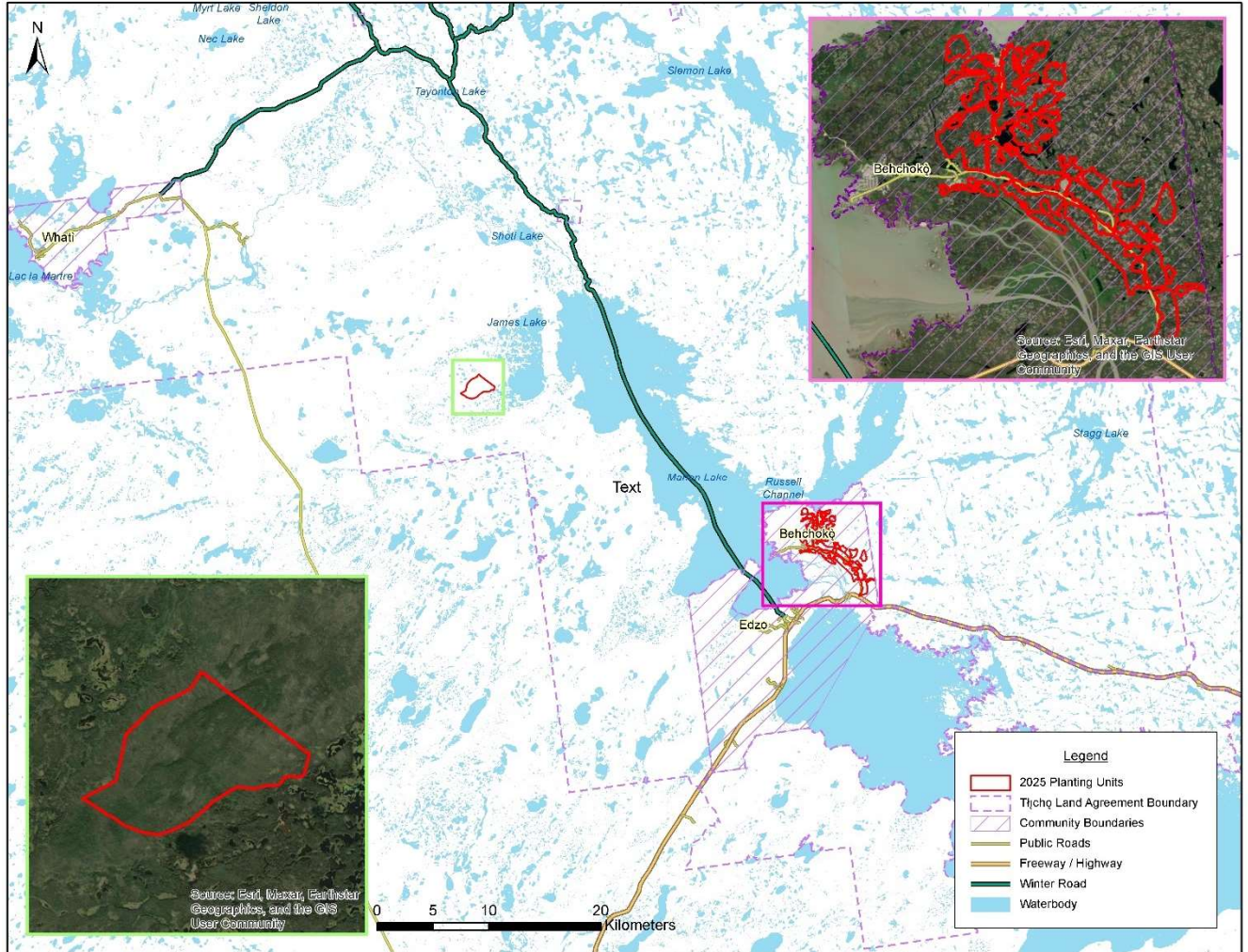


Figure 1: TGRP Overview map

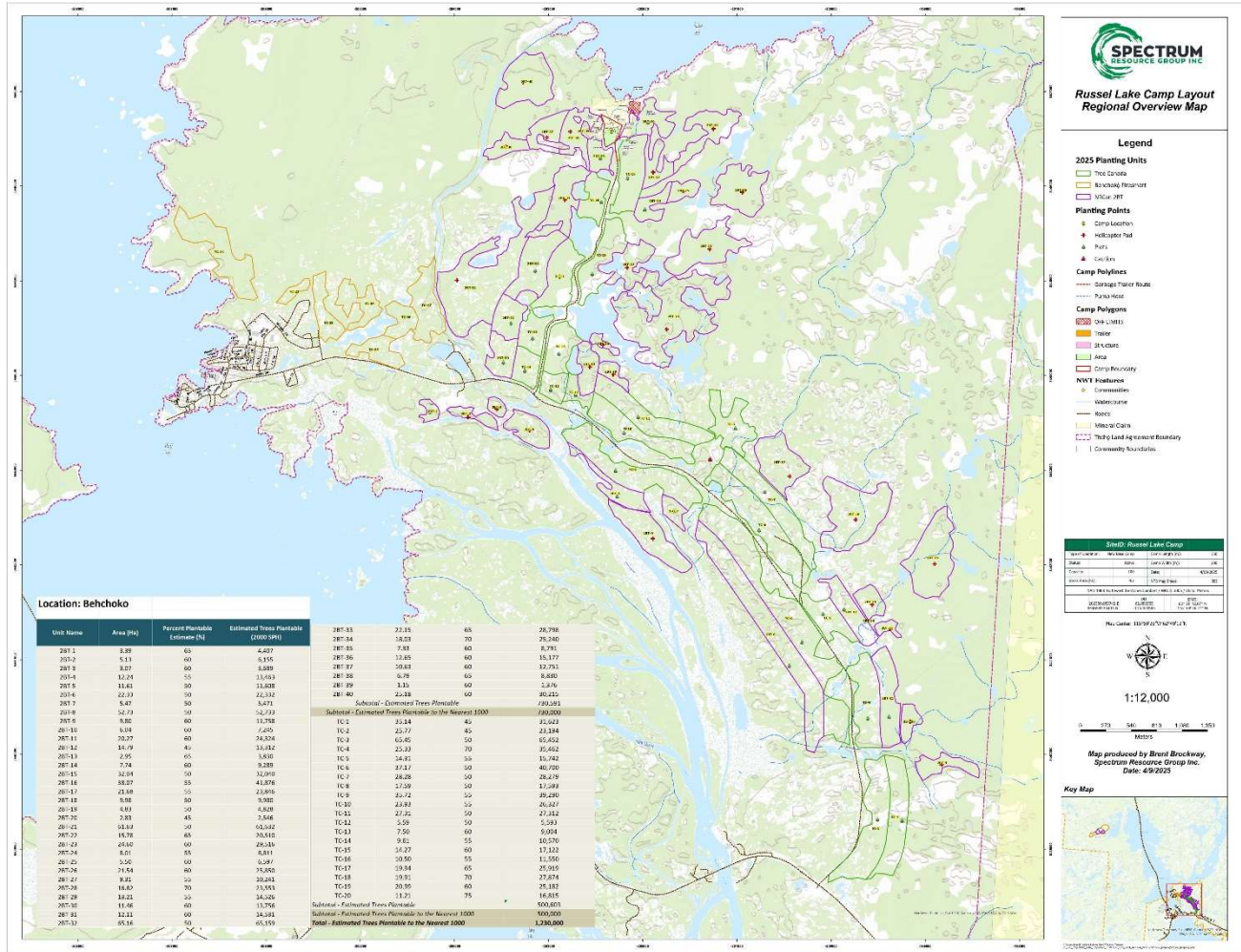


Figure 2: TGRP Camp Location Overview Map

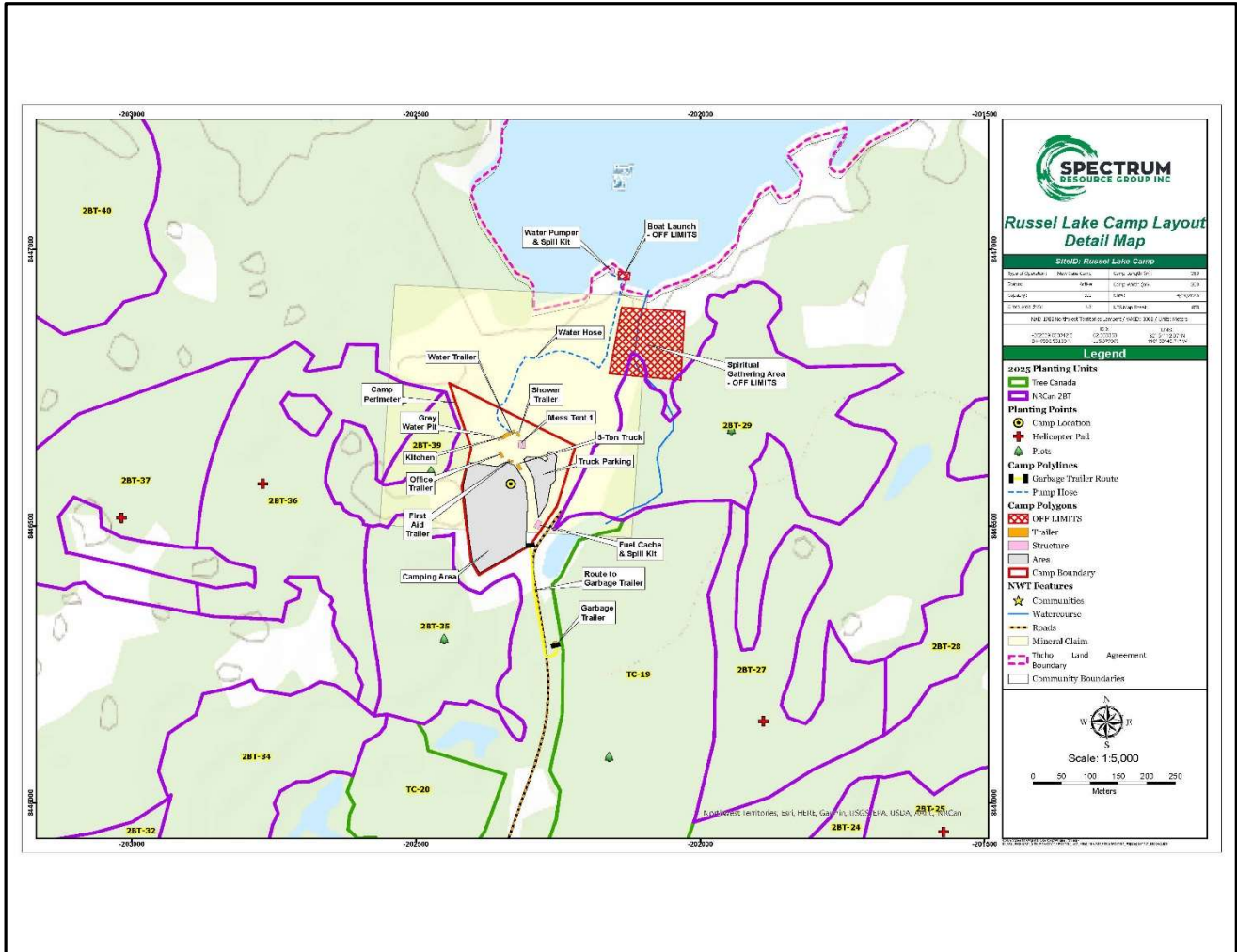


Figure 3: TGRP Camp Layout Map

Identification of Waste Types

Table 1. Potential hazardous and other waste materials proposed to be generated

Hazardous or Potentially Hazardous Wastes *	Non-Mineral Waste
Ash or incinerator residue (fire pits)	Domestic refuse
Used oil, fuels, lubricants, greases, oil filters, and solvents	Inert waste
Contaminated soils	Sewage
Chemical wastes – liquids or solids	Plastics
Sludges	
Lead acid batteries and alkaline batteries	

*Potential for generation of these kinds of waste will be minimal on the LPTN/SRG project

Waste Management Approach

To minimize environmental impact, waste management follows these principles:

1. **Reduce** – Limit waste generation through efficient material use.
2. **Reuse** – Repurpose materials whenever possible.
3. **Recycle** – Sort and direct recyclable materials to appropriate facilities.
4. **Recover** – Process organic waste when feasible.
5. **Dispose** – Follow proper procedures for non-recoverable waste.

Waste Categories and Management Strategies

Organic Waste (Food Scraps & Biodegradable Materials)

- Sources: Kitchen waste, food scraps, and biodegradable materials.
- Management:
 - Stored in wildlife-resistant containers to prevent animal attraction.
 - Food waste is moved into a metal locked trailer twice daily.
 - Trailer is transported twice weekly to an approved disposal or processing facility.
 - Composting will be implemented if conditions permit.

Non-Hazardous Waste (General Waste, Packaging, Paper, Plastics, etc.)

- Sources: Packaging, disposable materials, office waste, and general camp refuse.
- Management:
 - Sorted at source to separate recyclables from landfill waste.
 - Transported twice weekly to a licensed landfill.
 - No on-site burning or burial of waste.
 - Reduction strategies include limiting single-use plastics and encouraging reusable alternatives.

Hazardous Waste (Fuel, Batteries, Chemicals, etc.)

- Sources: Fuel storage, vehicle maintenance, and chemical use.
- Management:
 - Stored securely in labeled, leak-proof containers.
 - Kept at least 60 meters from water sources.
 - Transported to certified hazardous waste facilities.
 - Spill kits available at fuel handling areas, with spill response protocols in place.

Greywater & Sewage (Camp Water Use & Sanitation Waste)

- Sources: Showers, washing stations, and outhouses.
- Management:
 - Greywater pit (6' x 6' x 6') located at least 60 meters from water bodies in compliance with Greywater System Regulations under the *Public Health Act* and *Environmental Protection Act* of the NT.
 - Portable outhouses (10 units) serviced twice weekly, placed at least 30 meters from water and food prep areas.
 - Full compliance with territorial wastewater disposal standards.

Greywater Pit Monitoring and Maintenance

- Daily visual inspections for overflow, pooling, or excessive standing water.
- Odor assessment to detect organic buildup requiring maintenance.
- Weekly log entries to document pit condition and any maintenance actions.
- Use of biodegradable soaps and detergents to reduce environmental impact.
- If necessary, gravel filtering or a simple dispersion trench may be implemented to prevent surface contamination.

Decommissioning and Final Restoration

- At the end of the operational period, the greywater pit will be fully backfilled and covered.
- Final inspection log will confirm that the pit is properly closed and restored to natural site conditions.
- If required, a brief report will be provided to regulators to document the pit's closure and site remediation.

Waste Disposal Sites

Solid Waste Disposal

- **Facility:** Yellowknife Solid Waste Facility
- **Location:** Off Highway 4, an extension of 48 Street, Yellowknife, NT
- **Operating Hours:** Tuesday to Sunday, 11:00 AM – 4:15 PM (Closed on Mondays and holidays)

Compost Waste Facility

- **Facility:** Yellowknife Compost Facility
- **Location:** Located within the Yellowknife Solid Waste Facility premises

Sanitation and Waste Management

- Written approval from the Government of Behchokq̃ and NT Government land use permits will be obtained before construction, operation, and reclamation.
- Operations will fully comply with Industrial Camp Regulations and Greywater System Regulation.
- At least ten (10) privy seats will be available on site, fully enclosed and contained plastic units, situated at least 30m from any water sources or food preparation areas.
- Sewage to be pumped from fully contained privies and trucked to Behchokq̃ municipal treatment site by Tłı̄chq̃ based contractor.

Compliance and Monitoring

Waste Tracking Procedure

A paper-based waste tracking system will be implemented:

1. **Daily Waste Log:** Recorded by a designated staff member.
2. **Waste Transfer Documentation:** Completed for all transported waste.
3. **Weekly Review and Verification:** Logs will be reviewed for accuracy.
4. **End-of-Season Waste Report:** A final summary will be compiled for review.

Compliance Measures

- Regular site inspections will ensure compliance.
- Personnel training on waste management procedures.

Emergency Response (Spills and Incident Handling)

- Spill response kits at all hazardous waste locations.
- Immediate containment and cleanup procedures.
- Incident reporting procedures following MVLWB guidelines.

Site Decommissioning and Restoration

- No permanent structures or modifications to the site.
- Greywater pit decommissioned and restored upon camp closure.
- All waste removed, ensuring the site is returned to pre-camp conditions.

This plan is reviewed annually to ensure compliance with evolving regulations and best practices.

